

# Shrine of the Sacred Heart

School & Religious Facility Available For Sale

5800 Smith Avenue | Baltimore | MD 21209

**FOR SALE**



# Overview

## Highlights

- 3.5 Acre Campus
- Zoned R1
- 50 On-Site Parking Spaces
- Entry from Smith Avenue & Greely Road
- Small Playground
- Indoor Gym
- Historic Tax Credit Eligible
- Council District 5

## Description

**The Shrine of the Sacred Heart**, recently operated by the City of Baltimore Schools, is a rare opportunity for a school, religious organization, or non-profit to locate in Mt. Washington. The 3.5-acre campus includes a historic church, classic school building, and early 20th-century rectory totaling approximately 45,000 SF, along with 50 on-site parking spaces. The property is positioned directly across from the Johns Hopkins University Mt. Washington Conference Center and is within walking distance to Mt. Washington Village, providing access to neighborhood amenities.

## Building Breakdown

### School Building

- 24,730 SF
- Constructed 1958
- Renovated 2003



### Church

- 14,476 SF
- Constructed 1867
- Expanded 1917

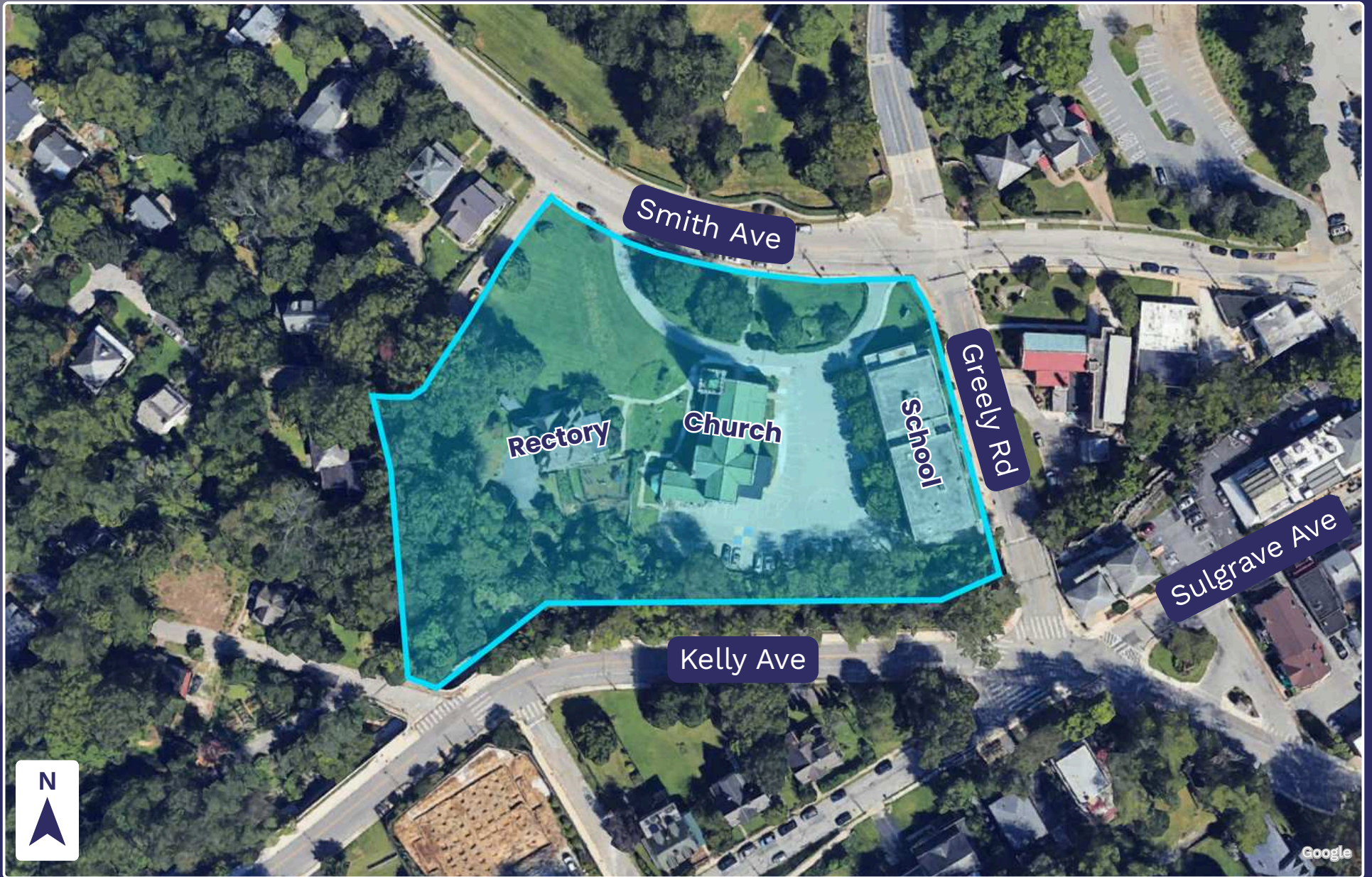


### Rectory

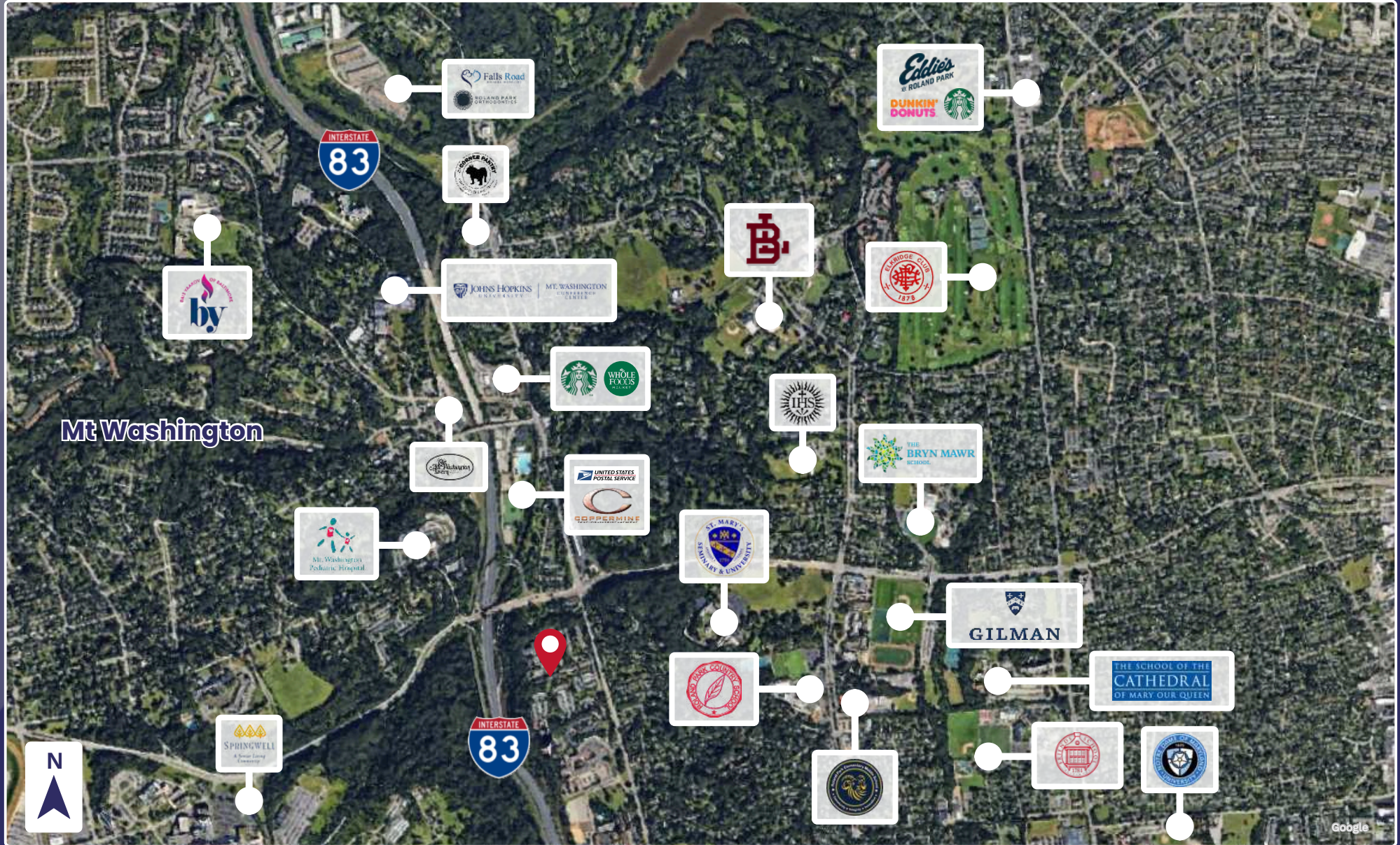
- 6,122 SF
- Constructed 1940



# Aerial



# Community Map



# Exterior Photos – Aerials



# Exterior Photos – Ground Level



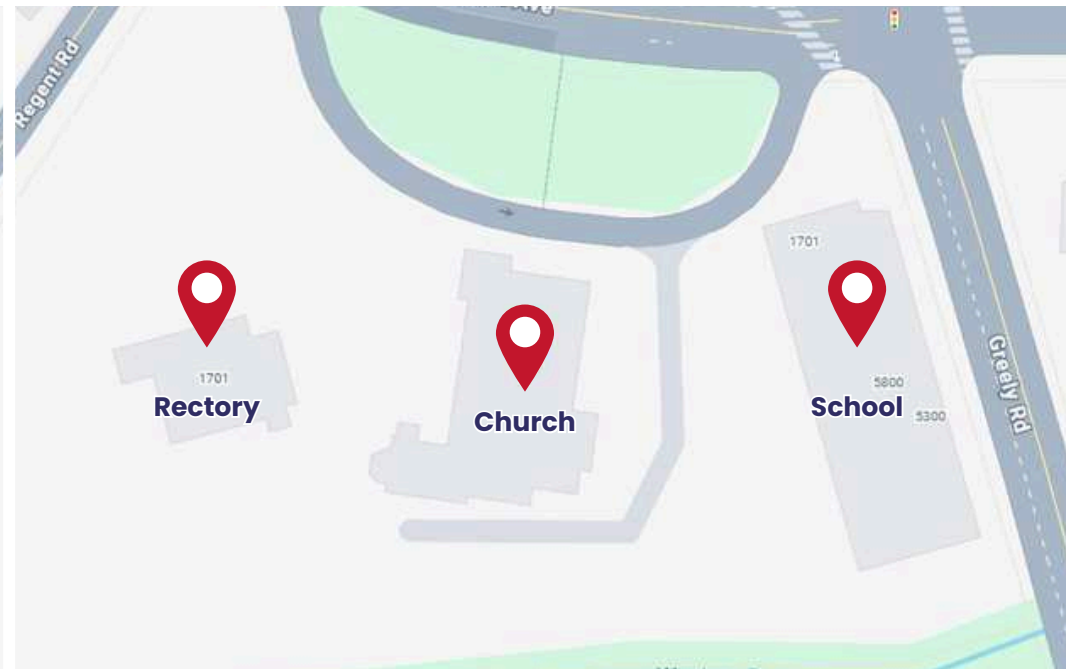
Church



Rectory



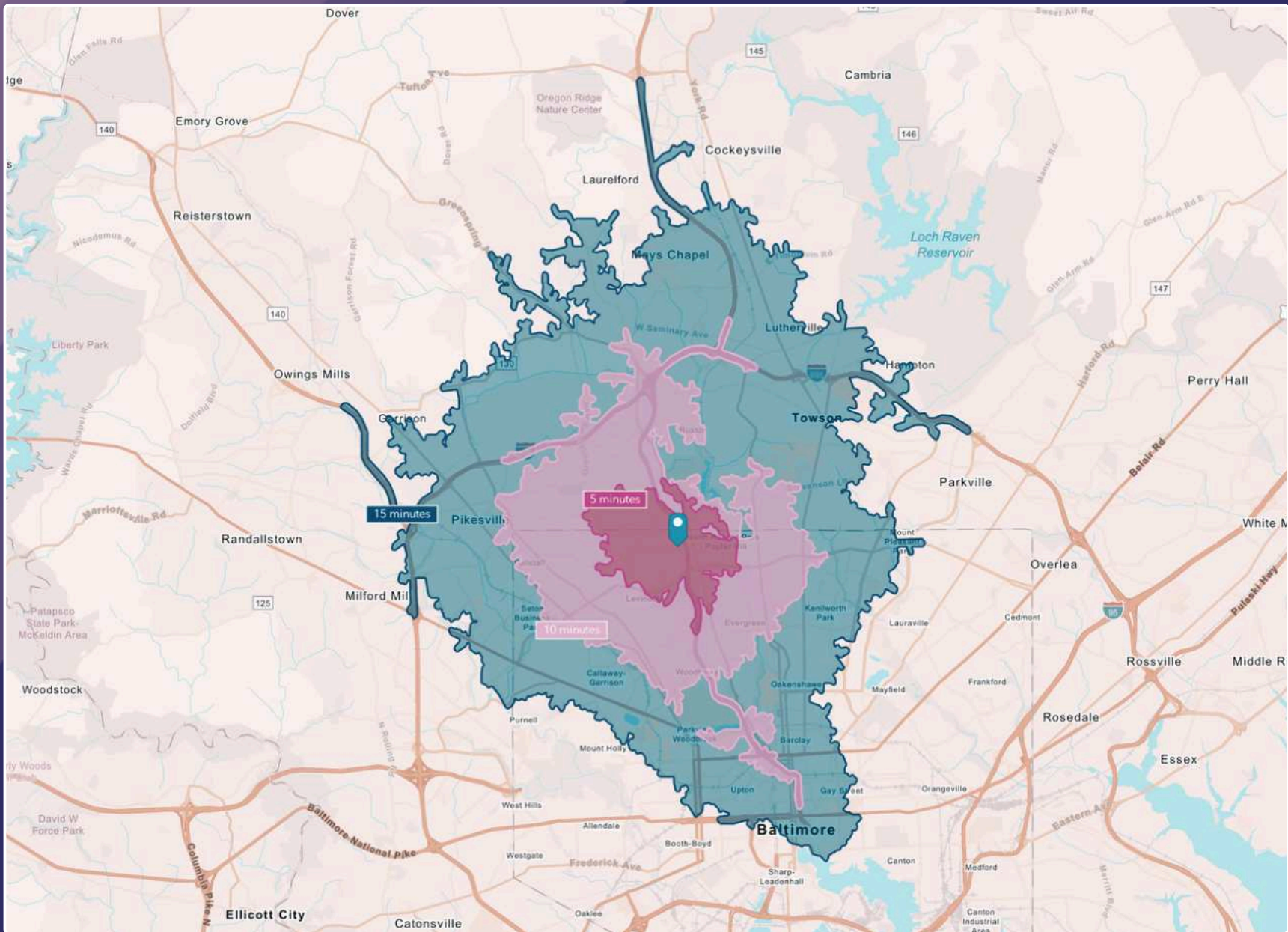
School



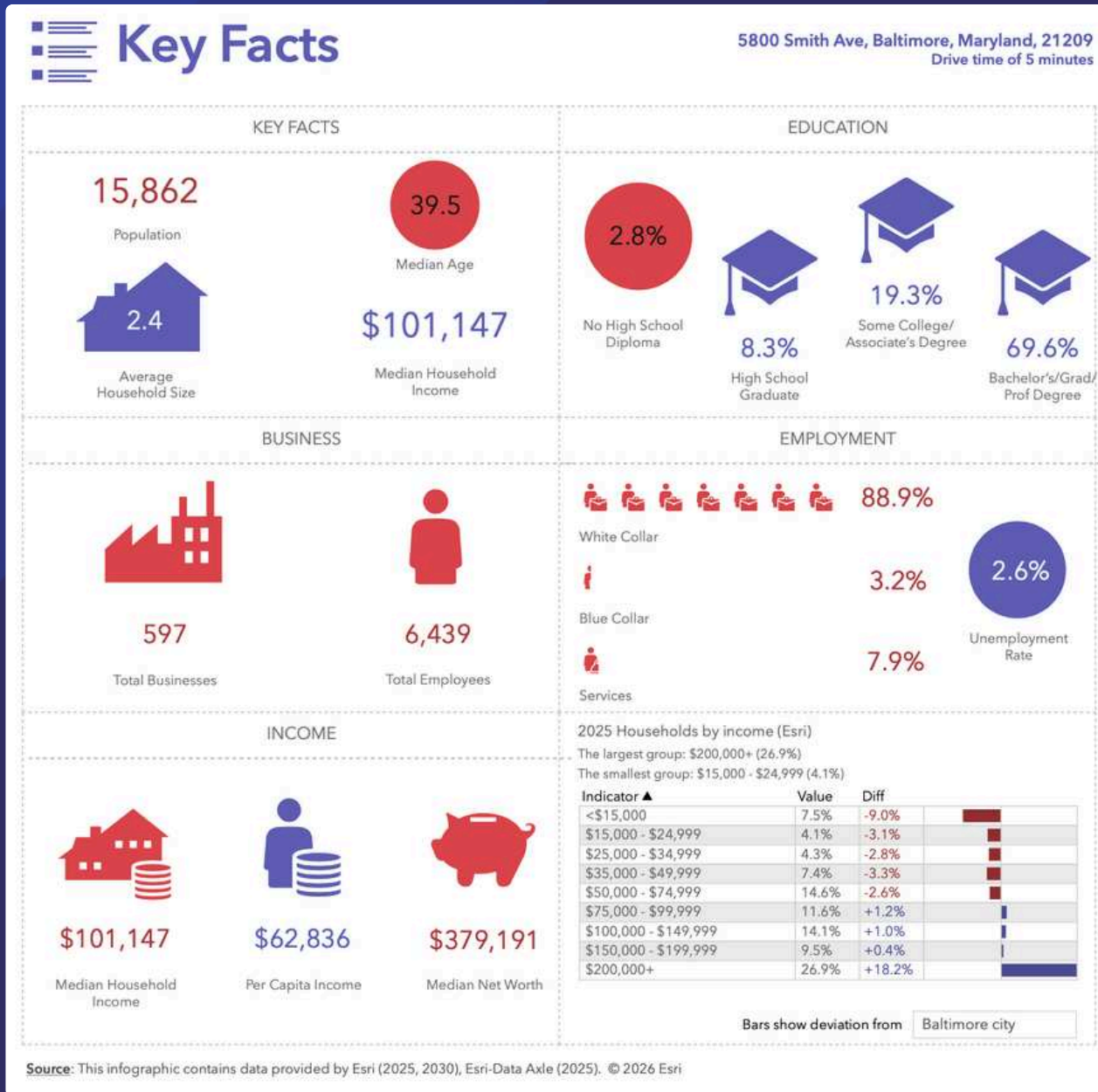
# Interior Photos



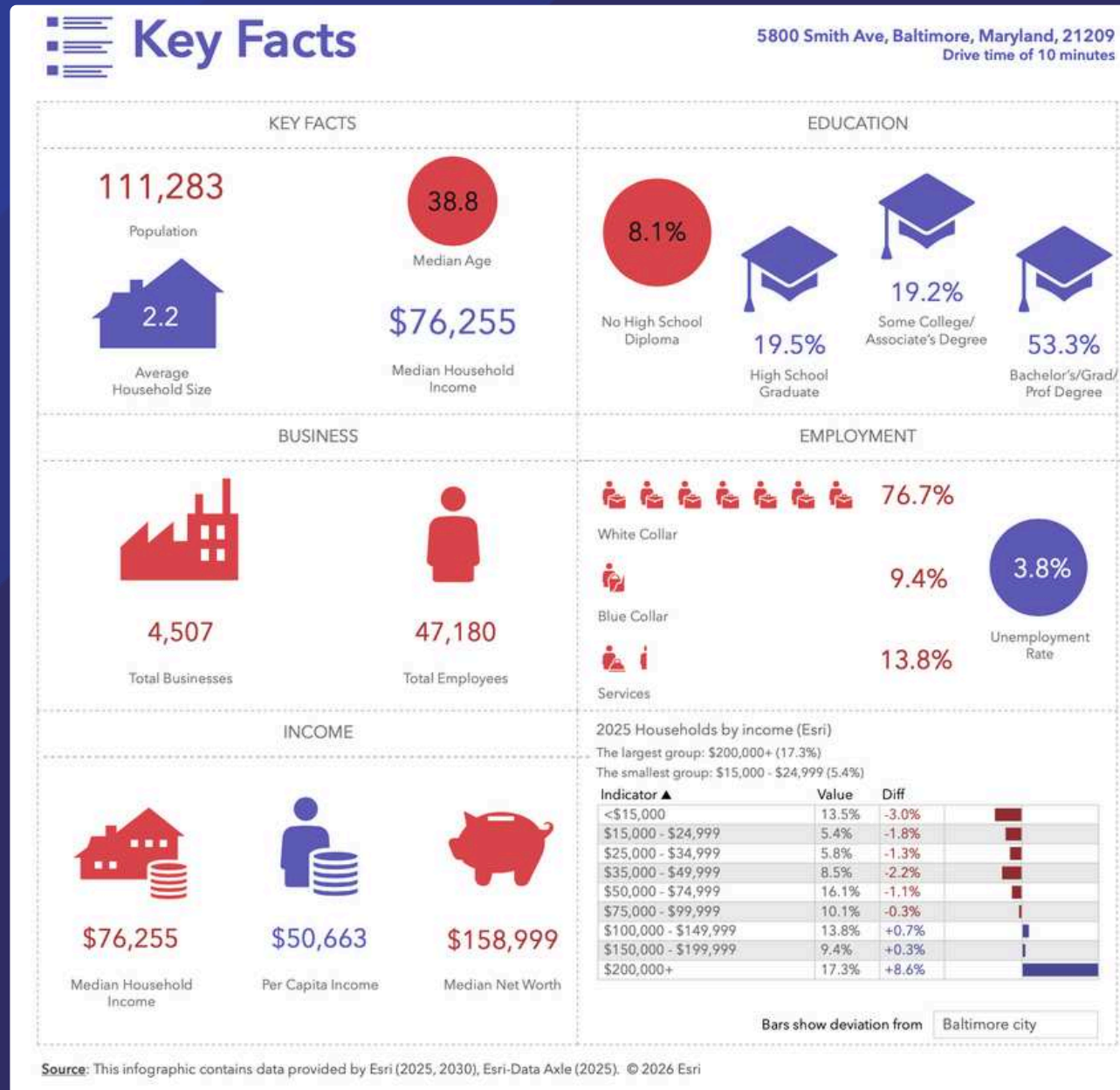
# Drive Time Map



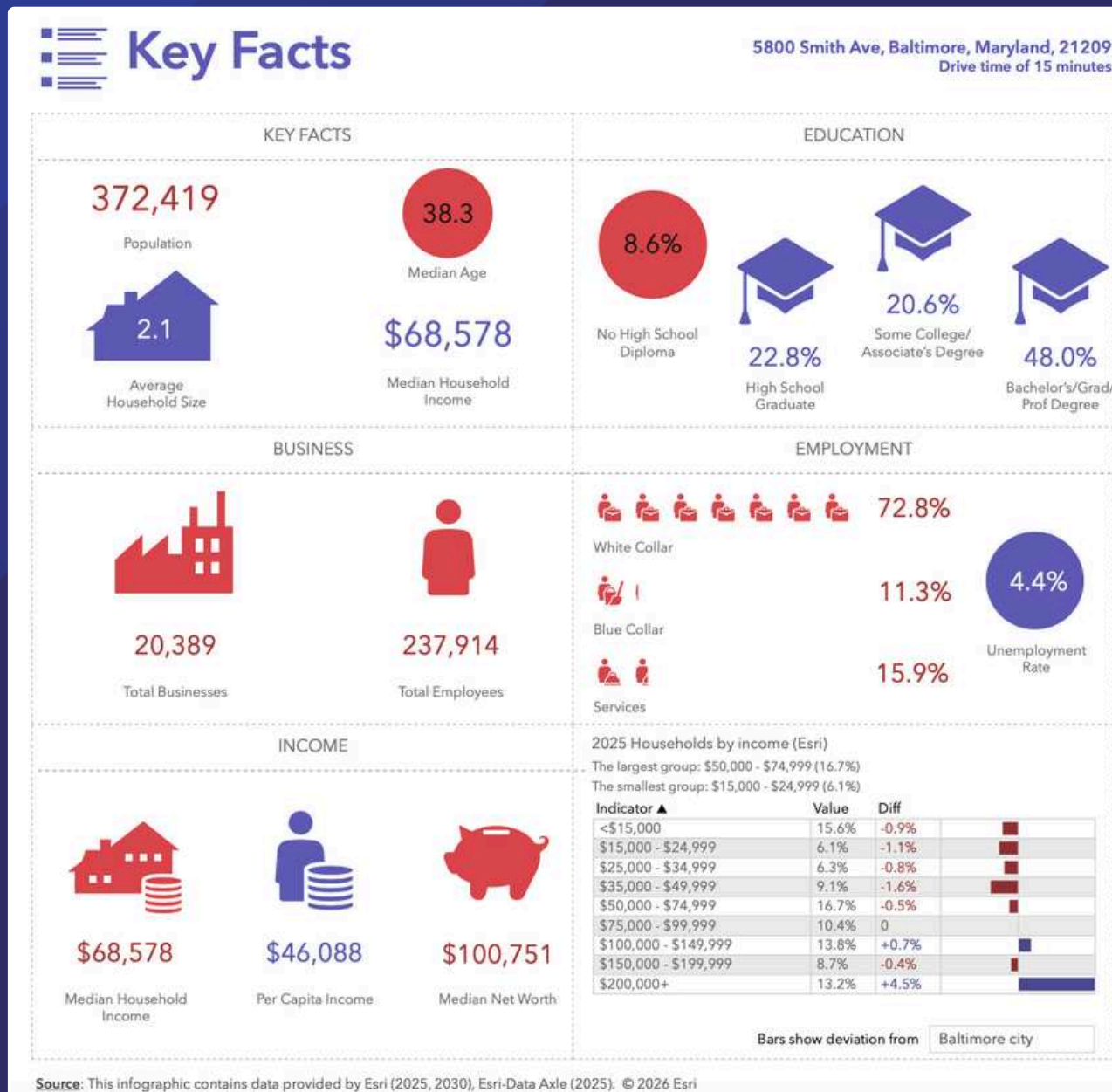
# Key Facts – Drive Time 5 Minutes



# Key Facts – Drive Time 10 Minutes



# Key Facts – Drive Time 15 Minutes



# Education Overview – 5 Minutes



## K - 12 Education Overview

5800 Smith Ave, Baltimore, Maryland, 21209  
Drive time of 5 minutes

### Public School Student Enrollment (ACS)

Kindergarten	244
Grades 1 - 4	392
Grades 5 - 8	333
Grades 9 - 12	611

### Private School Student Enrollment (ACS)

Kindergarten	139
Grades 1 - 4	597
Grades 5 - 8	858
Grades 9 - 12	467



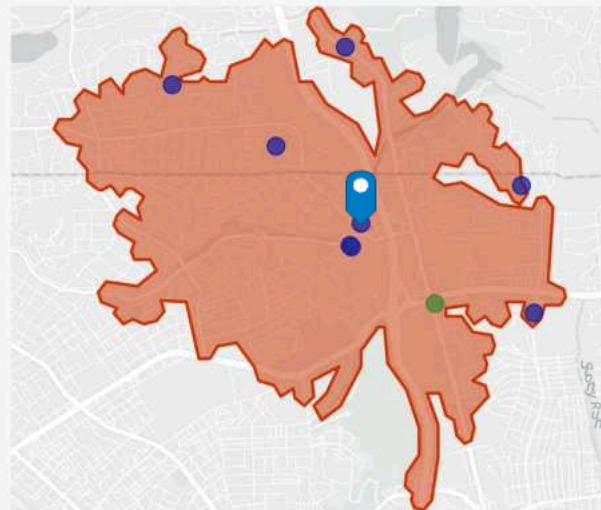
2,860

Total Population Ages 5 to 18

8  
Elementary &  
Secondary Schools

0  
Public  
Libraries

1  
Parks



### Households and Enrollment (ACS)

6,662	5,138
Total Households	Population 3+ Enrolled in School

### Population without Computer or Internet (ACS)

102	10	122
Pre-K to 4th Grade	5th to 8th Grade	9th to 12th Grade

### Average Household Educational Spending

\$411	\$117
Elementary/ High School Tuition	Educational Books/Supplies/Other Expenditures
\$54	\$110
Test Preparation/ Tutoring Svcs	Other School Supplies

Source: This infographic contains data provided by ACS (2019-2023), Esri-U.S. BLS (2025). Data Axle POI data updated 3 times per year.\* Indicates the number of locations has reached the maximum. © 2026 Esri

# Education Overview – 10 Minutes



## K - 12 Education Overview

5800 Smith Ave, Baltimore, Maryland, 21209  
Drive time of 10 minutes

### Public School Student Enrollment (ACS)

Kindergarten	948
Grades 1 - 4	3,073
Grades 5 - 8	3,313
Grades 9 - 12	3,351

### Private School Student Enrollment (ACS)

Kindergarten	876
Grades 1 - 4	2,822
Grades 5 - 8	2,898
Grades 9 - 12	2,081



17,536

Total Population Ages 5 to 18



62

Elementary &  
Secondary Schools



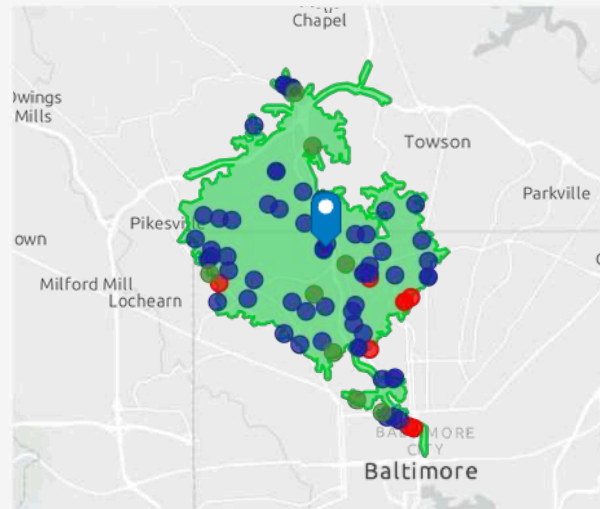
8

Public  
Libraries



8

Parks



### Households and Enrollment (ACS)

45,639	32,868
Total Households	Population 3+ Enrolled in School

### Population without Computer or Internet (ACS)

1,221	291	386
Pre-K to 4th Grade	5th to 8th Grade	9th to 12th Grade

### Average Household Educational Spending

\$306	\$100
Elementary/ High School Tuition	Educational Books/Supplies/Other Expenditures
\$41	\$92
Test Preparation/ Tutoring Svcs	Other School Supplies

Source: This infographic contains data provided by ACS (2019-2023), Esri-U.S. BLS (2025). Data Axle POI data updated 3 times per year. \* Indicates the number of locations has reached the maximum. © 2026 Esri

# Education Overview – 15 Minutes



## K - 12 Education Overview

5800 Smith Ave, Baltimore, Maryland, 21209  
Drive time of 15 minutes

### Public School Student Enrollment (ACS)

Kindergarten	3,487
Grades 1 - 4	10,953
Grades 5 - 8	12,772
Grades 9 - 12	11,824

### Private School Student Enrollment (ACS)

Kindergarten	1,199
Grades 1 - 4	4,698
Grades 5 - 8	4,677
Grades 9 - 12	4,366



54,452

Total Population Ages 5 to 18



193

Elementary &  
Secondary Schools



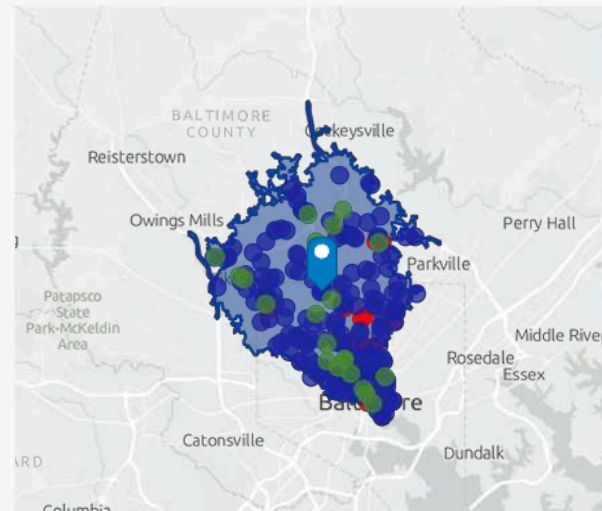
23

Public  
Libraries



21

Parks



### Households and Enrollment (ACS)

161,150	102,568
Total Households	Population 3+ Enrolled in School

### Population without Computer or Internet (ACS)

2,544	804	1,146
Pre-K to 4th Grade	5th to 8th Grade	9th to 12th Grade

### Average Household Educational Spending

\$264	\$90
Elementary/ High School Tuition	Educational Books/Supplies/Other Expenditures
\$36	\$81
Test Preparation/ Tutoring Svcs	Other School Supplies

Source: This infographic contains data provided by ACS (2019-2023), Esri-U.S. BLS (2025). Data Axle POI data updated 3 times per year. \* Indicates the number of locations has reached the maximum. © 2026 Esri

# Housing Market Characteristics - 15 Minutes

## Housing Market Characteristics

5800 Smith Ave, Baltimore, Maryland, 21209  
Drive time of 15 minutes



**\$359,743** ↓  
Median Home Value

23.1% lower than Maryland  
which is \$468,044



67

Housing Affordability Index



32.8%

Percent of Income for Mortgage



115

Percent of Income for Mortgage (Index)

Age <18 66,498

Age 18-64 232,303

Age 65+ 73,618

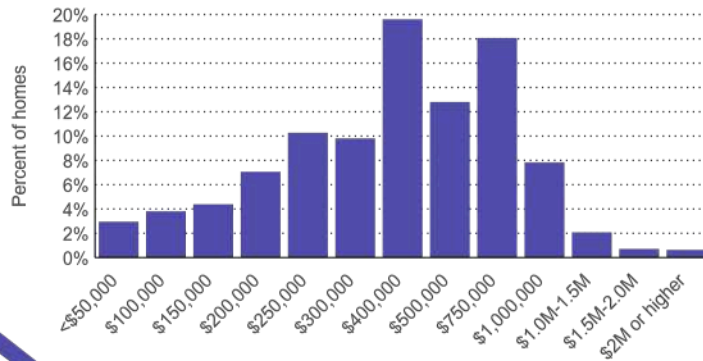
Total Pop  
372,419

Pop Growth  
-0.58%

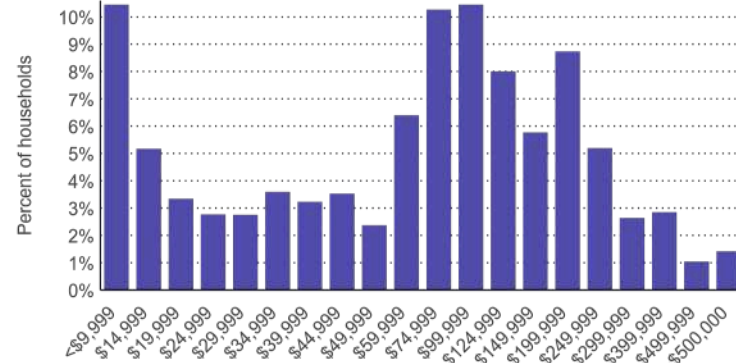
Average HH Size  
2.14

Median Net Worth  
\$100,751

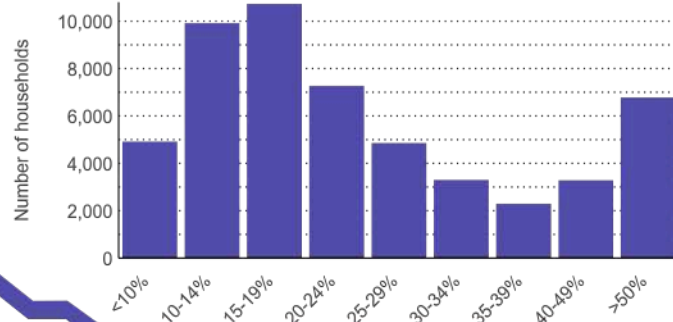
### Home Value



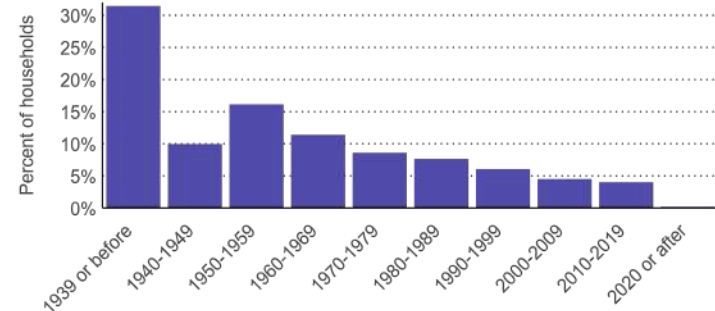
### Household Income



### Mortgage as % Salary



### Year Property Built



Source: This infographic contains data provided by Esri (2025), ACS (2019-2023), U.S. Census (2020). © 2026 Esri

# Shrine of the Sacred Heart

## Gary S. Olschansky

Investment Sales

📞 O: 443.921.9348 | C: 443.465.6594

✉️ golschansky@troutdaniel.com

## Jack Riehl

Vice President

📞 O: 410.769.8300

✉️ jack@obrechtriehl.com

## Susan Riehl

Principal

📞 O: 410.769.8300

✉️ susan@obrechtriehl.com

## John Riehl

Principal

📞 O: 410.769.8300

✉️ john@obrechtriehl.com



## Contact Us

📍 **30 E. Padonia Road, Suite  
504** Timonium, MD 21093

🌐 **Visit Us**  
troutdaniel.com

📞 **Call Us**  
410.435 .4004

The information contained in this marketing brochure has been obtained from sources we believe to be reliable; however, Trout Daniel & Associates LLC has not verified, and will not verify any of the information contained herein, nor has Trout Daniel & Associates LLC conducted any investigation regarding these matters and makes no warranty or representation whatsoever regarding the accuracy or completeness of the information provided. An agent indicated by an asterisk (\*) has a direct or indirect ownership interest in this property.

## Contact Us

**120 Cockeysville Road,  
Suite 101** Cockeysville,  
Maryland 21030

🌐 **Visit Us**  
obrechtriehl.com

📞 **Call Us**  
410.769.8300

The information contained in this marketing brochure has been obtained from sources we believe to be reliable; however, Obrecht-Riehl Properties has not verified, and will not verify any of the information contained herein, nor has Obrecht-Riehl Properties conducted any investigation regarding these matters, and makes no warranty or representation whatsoever regarding the accuracy or completeness of the information provided. An agent indicated by an asterisk (\*) has a direct or indirect ownership interest in this property.