

AVAILABLE

3700
ATLANTA INDUSTRIAL PKWY



3700 ATLANTA INDUSTRIAL PKWY // ATLANTA, GA 30331

CBRE

HIGHLIGHTS



177,335+/- SF with 12,629 SF Office on 11.62 acres; Stand Alone, Fully Secured Building



22'-24' Ceiling Height with Wet Sprinkler System



Two Transformers, 1000kVA 19.8kV eac., Feeding Two Mains



205 Car Parks



18 Dock Doors (16 with Levelers) and 1 Drive-In Door



LED & T-5 Lighting throughout the Warehouse



Fenced Truck Lot

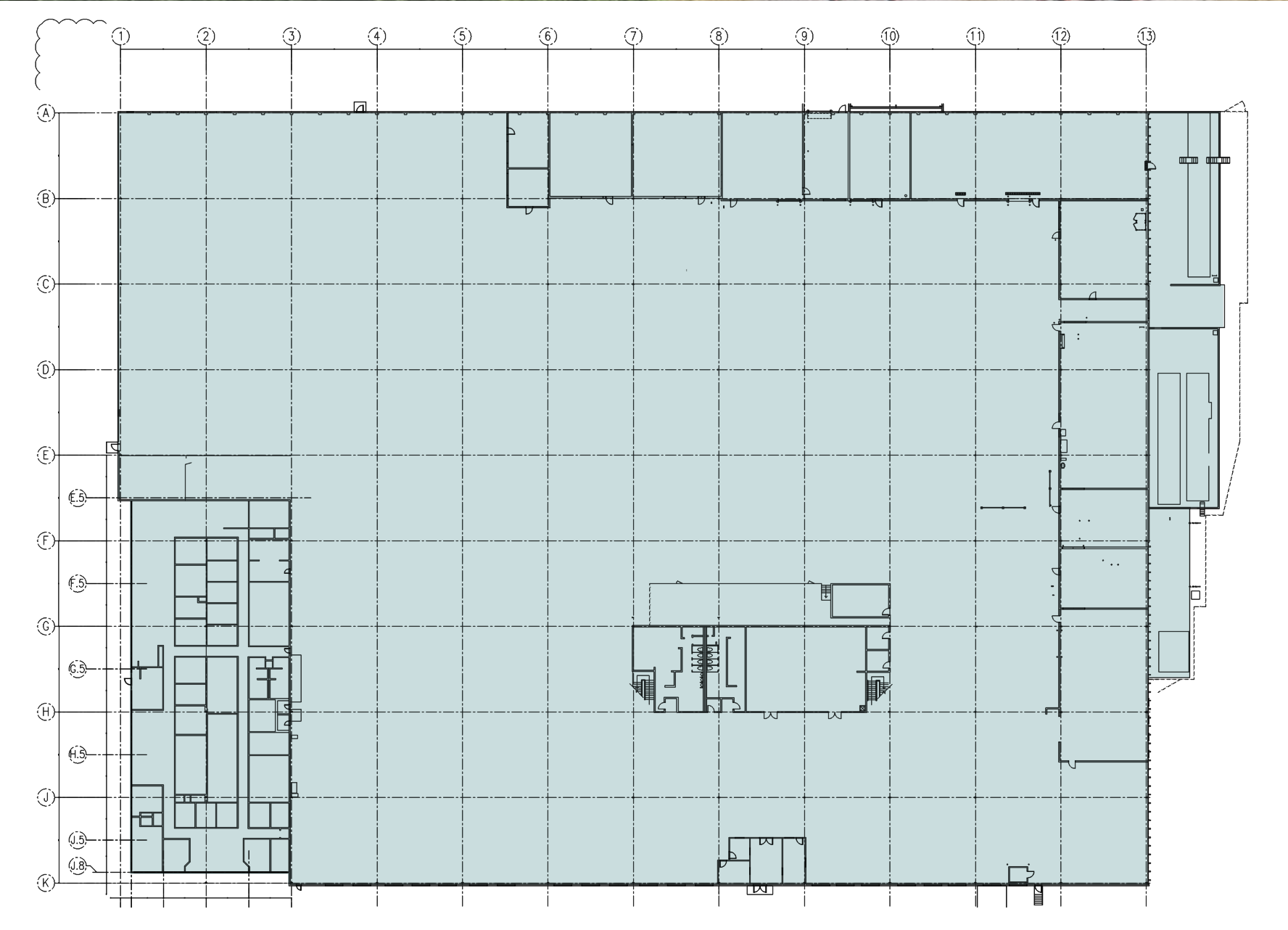


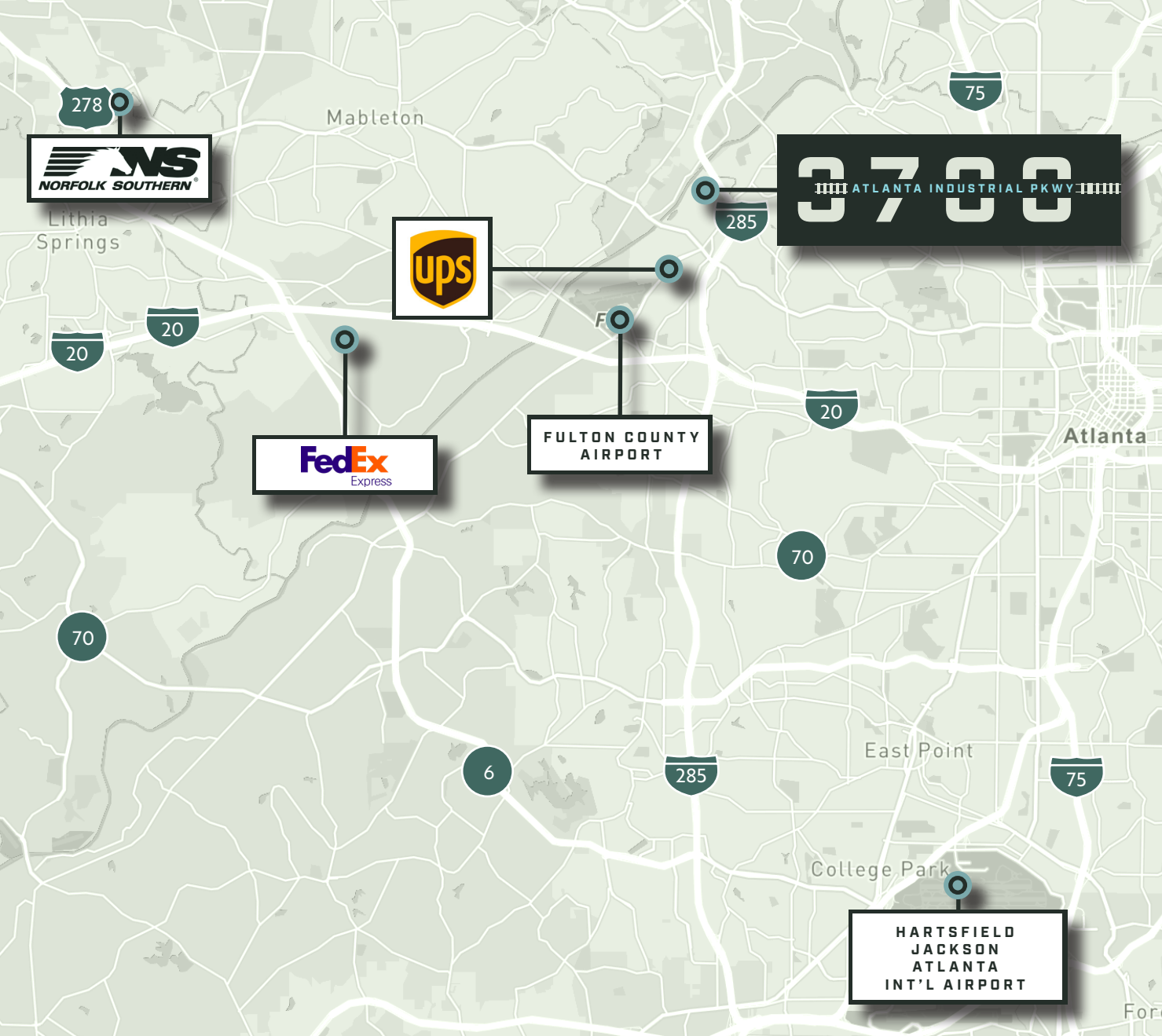
Norfolk Southern Rail Available



Fully Air-conditioned

FLOOR PLAN





CONTACT



TODD BARTON, SIOR
+1 404 923 1435
todd.barton@cbre.com

MARK HAWKS
+1 404 504 5978
mark.hawks@cbre.com

JOANNA BLAESING
+1 404 812 5281
joanna.blaesing@cbre.com

MATT HIGGINS
+1 404 895 0483
matt.higgins@cbre.com

©2023 CBRE, Inc. All rights reserved. This information has been obtained from sources believed reliable, but has not been verified for accuracy or completeness. You should conduct a careful, independent investigation of the property and verify all information. Any reliance on this information is solely at your own risk. CBRE and the CBRE logo are service marks of CBRE, Inc. All other marks displayed on this document are the property of their respective owners, and the use of such logos does not imply any affiliation with or endorsement of CBRE. Photos herein are the property of their respective owners. Use of these images without the express written consent of the owner is prohibited.

