

Light Industrial/Manufacturing FOR LEASE

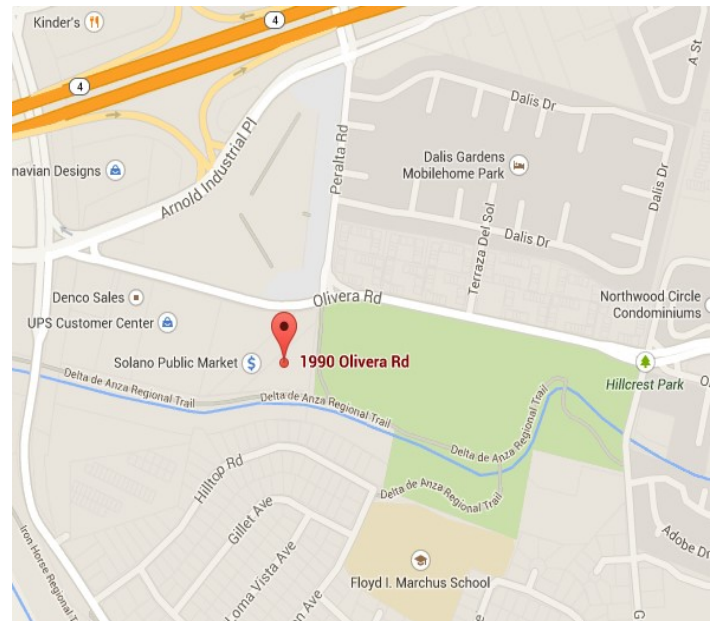
1990 Olivera Road, Unit D Concord, California



Property Information

- Unit D — Available for Lease
- Rental Rate \$1.65 SF / Mo IG
- 5,500 +/- sf Warehouse/Office
- **Improvements as Follows:**
- 3,900 +/- sf Warehouse/Manufacturing
- 800 +/- sf First Floor Office
- 800 +/- sf Second Floor Office
- Two Restrooms
- **Space Features:**
- Office Buildout on Two Floors
- Drive Thru Capability
- 20' Clear Height, Fire Sprinklers
- (2) 12' X14' Grade Level Doors
- Min. 400 AMP 120/208 Volt 3 Phase
- 12 Assigned Parking Stalls
- Small Rear Outside Storage/Yard Area
- Easy Access to Highways 4, 242, I-680

Property Location Map

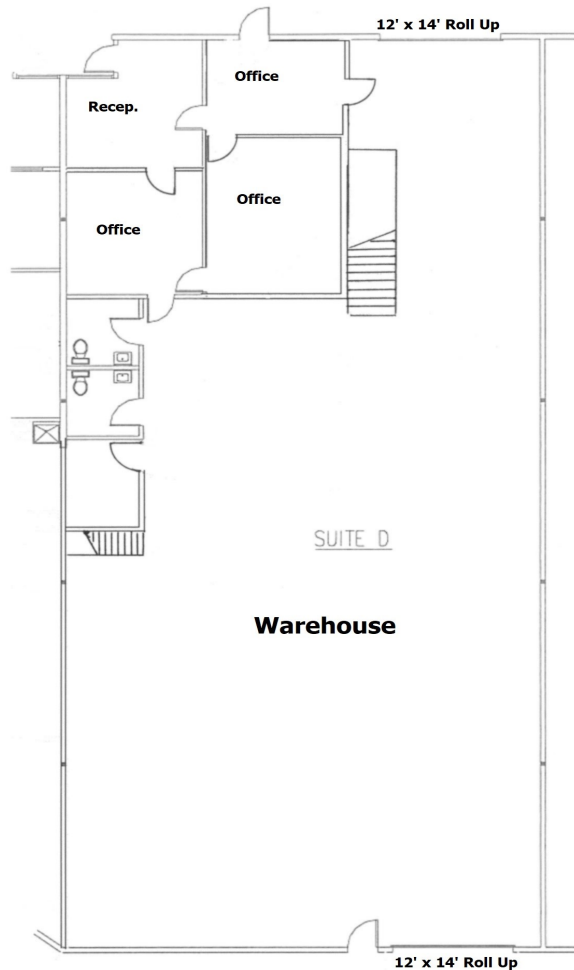


Please Contact:

Tom Caple (510) 908-0505
 tom@dpccommercial.com
 Graham Deutscher (925)768-1389
 graham@dpccommercial.com

Deutscher Properties
 370 Civic Drive
 Pleasant Hill, CA
 Office (925) 676-6166
 Fax (925) 676-6177
 www.dpccommercial.com

1990 Olivera Road, Unit D Warehouse Unit Space +/- 5,500 sf Floor Plan



Please Contact:
Tom Caple (510) 908-0505
tom@dpccommercial.com
Graham Deutscher (925)768-1389
graham@dpccommercial.com

Deutscher Properties
370 Civic Drive
Pleasant Hill, CA
Office (925) 676-6166
Fax (925) 676-6177
www.dpccommercial.com