

TASMAN5

SUNNYVALE, CA 94089

- › 1257 TASMAN DRIVE
- › 1233-1239 REAMWOOD AVENUE
- › 1243-1249 REAMWOOD AVENUE
- › 1253-1259 REAMWOOD AVENUE
- › 1240 ELKO DRIVE



RYAN ADLESH

☎ +1 408 453 7414

✉ ryan.adlesh@cbre.com

LIC. 01933004 | Senior Vice President

TIFFANY BIRD

☎ +1 408 610 0983

✉ tiffany.bird@cbre.com

LIC. 01936335 | Senior Associate

CBRE



TASMAN5

PROJECT HIGHLIGHTS

- **New, Modern Improvements**

Market ready suites with high-end finishes complete.

- **Life/Safety**

Suites are equipped with fire sprinklers and fire alarms.

- **Versatile Floorplan Options**

R&D Flex and Industrial spaces with a mix of office, lab and warehouse space.

- **Parking**

3.0/1,000

- **Easy to Access**

Adjacent from Reamwood Station VTA Light Rail, and close proximity to HWY 101 and Lawrence Expressway.

- **Amenities**

Less than 10 minutes from Santa Clara Square and AMC Mercado with multiple options for food, coffee, fitness and retail.

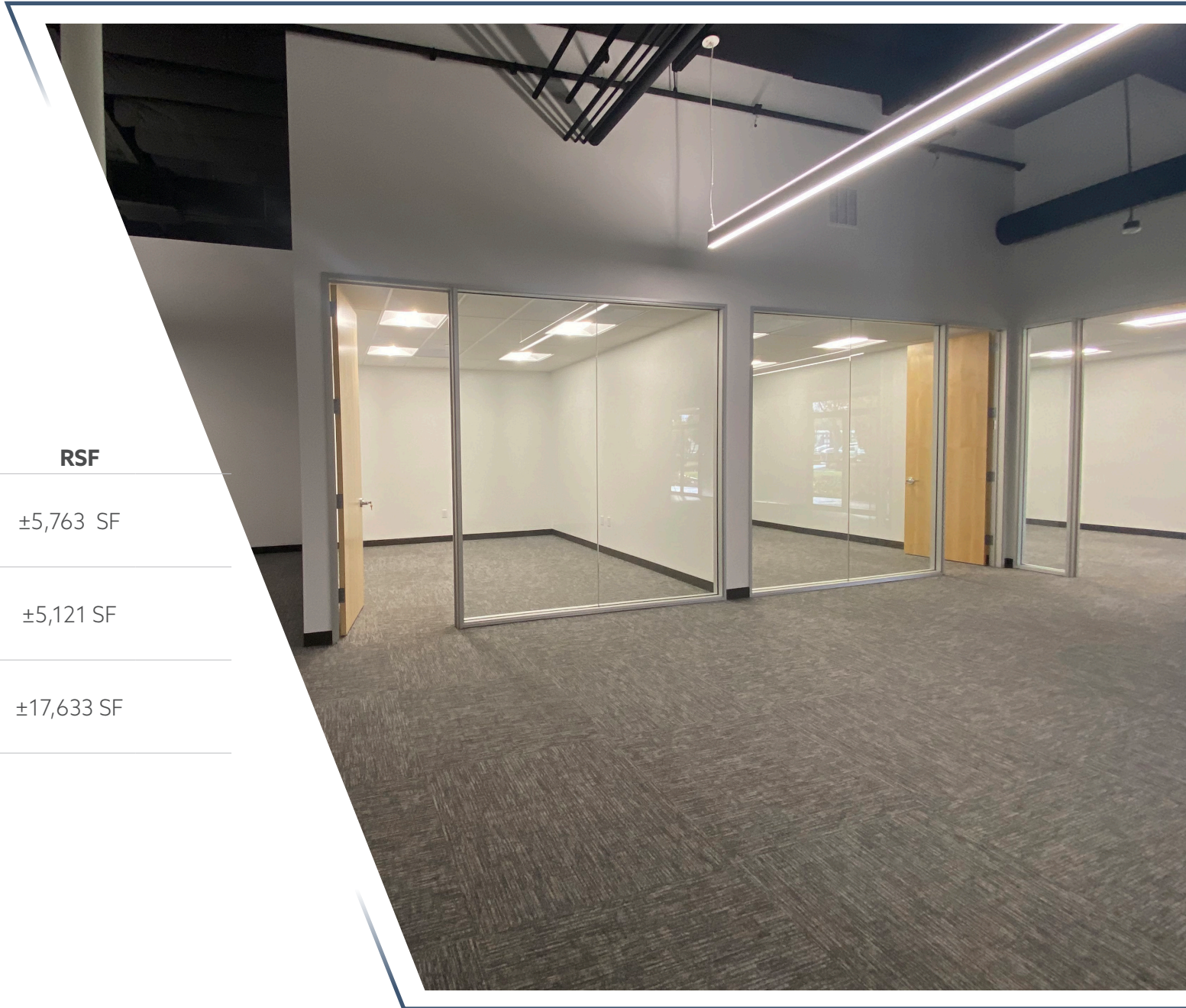
5 minutes from Levi's Stadium, hotels, dining, executive conference centers, and local retail.

TASMAN5

AVAILABLE SUITES

RSF

- | | |
|-------------------------------|------------|
| ▶ 1243 Reamwood Avenue | ±5,763 SF |
| ▶ 1257 Reamwood Avenue | ±5,121 SF |
| ▶ 1240 Elko Drive | ±17,633 SF |



TASMAN5

1240 Elko Drive
±17,633 SF Available

1257 Reamwood Avenue
±5,121 SF Available

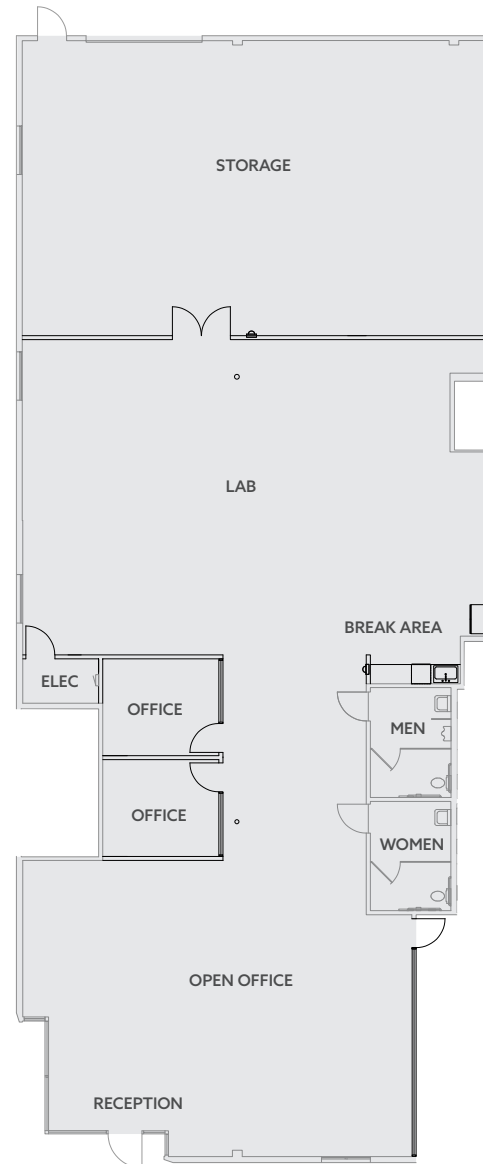
1243 Reamwood Avenue
±5,763 SF Available



TASMAN5

1243 REAMWOOD AVE

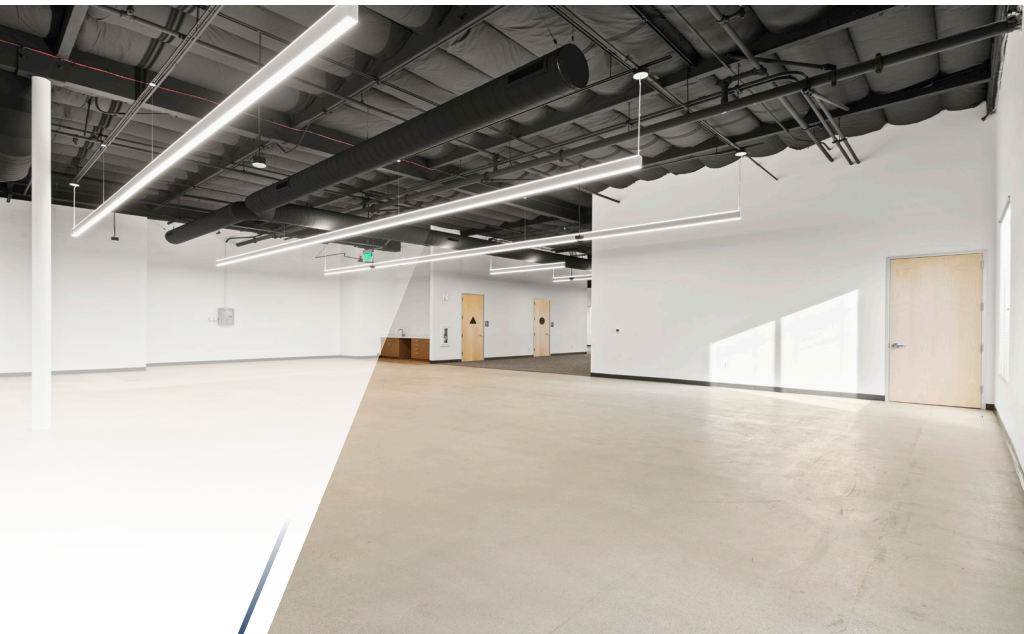
- » ±5,763 SF
- » 12-15' Clear Height
- » 2 Offices
- » Break Room
- » 30% Office / 30% Lab / 30% Office
- » 400 Amps
- » 208/120v 3-Phase power
- » 1 Grade Level Door
- » Market Ready Work Complete



MARKET READY PLAN



TASMAN5



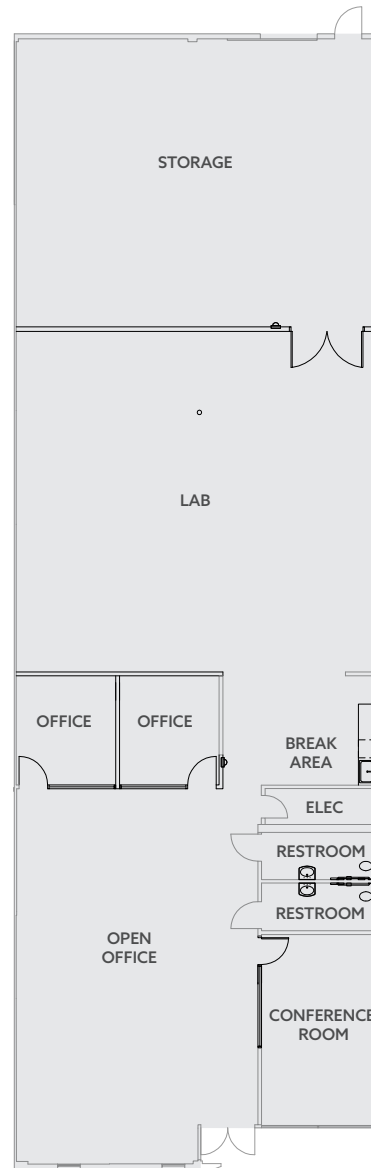
1243 REAMWOOD AVE

TASMAN5

1257 REAMWOOD AVE

- » ±5,121 SF
- » 12-15' Clear Height
- » 2 Offices
- » 1 Conference Room
- » Break Room
- » 30% Office / 30% Lab / 30% Office
- » 400 Amps
- » 208/120v 3-Phase power
- » 1 Grade Level Door
- » Connectivity - Comcast Fiber Ready
- » Market Ready Work Complete

MARKET READY PLAN



TASMAN5

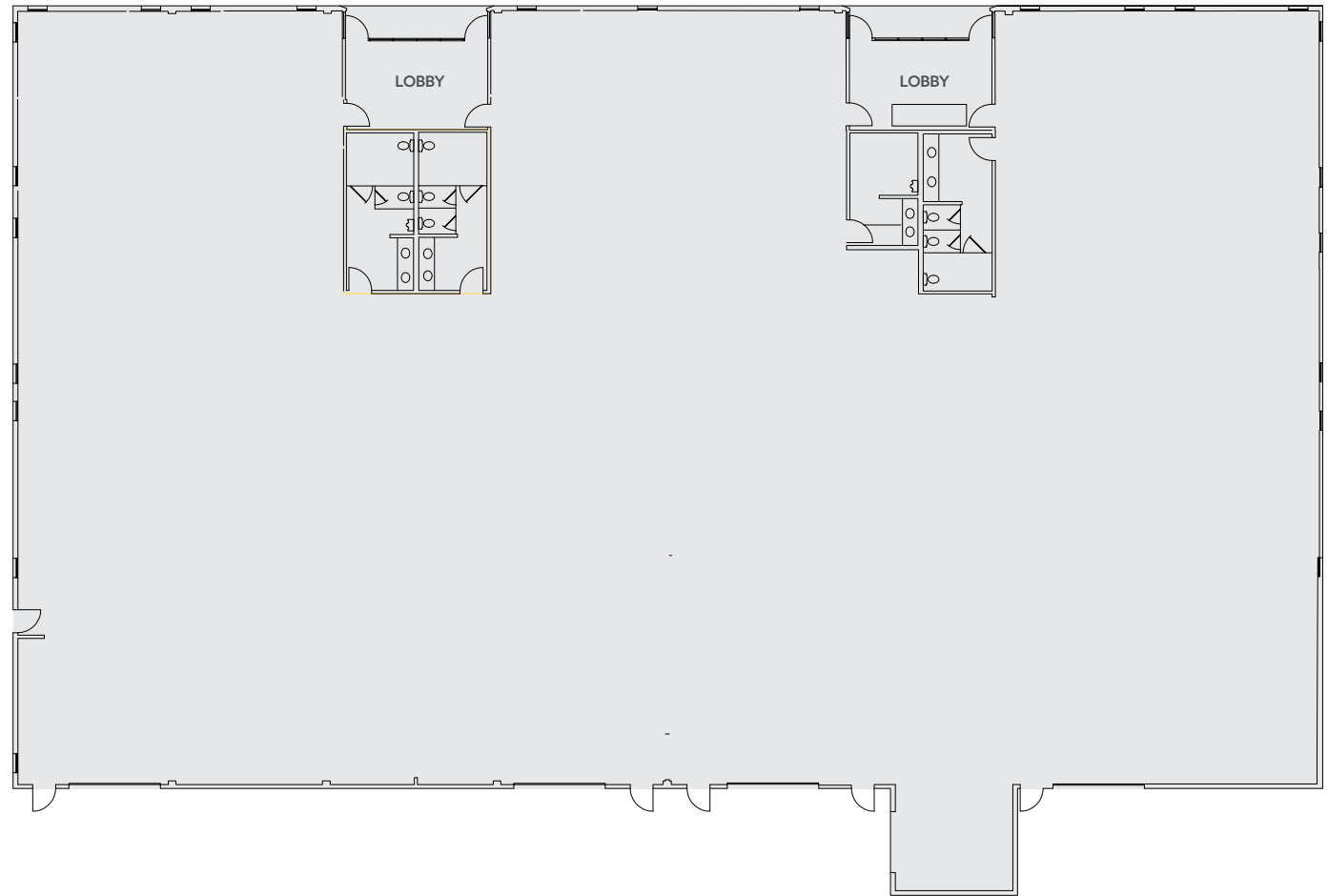


1257 REAMWOOD AVE

TASMAN5

1240 ELKO DR

- » ±17,633 SF
- » 800 Amps
- » 208/120v 3-Phase power
- » 2 Grade Level Doors
- » Space is ready for tenant improvements.
- » Connectivity - Comcast Fiber Ready



TASMAN5

AREA AMENITIES

TASMAN 5 is conveniently located close to Lawrence Expressway, adjacent to the Reamwood Light Rail Station, with access to Hwys 101 and 237. Enjoy nearby amenities for lunch and after-hours fun! Check out Levi's Stadium, AMC Mercado and Santa Clara Square for dining, shopping, entertainment and fitness! Take advantage of the area's hotels, conference centers and local retail.



TASMAN5

SUNNYVALE, CA 94089

- > 1257 TASMAN DRIVE
- > 1233-1239 REAMWOOD AVENUE
- > 1243-1249 REAMWOOD AVENUE
- > 1253-1259 REAMWOOD AVENUE
- > 1240 ELKO DRIVE

RYAN ADLESH

+1 408 453 7414
ryan.adlesh@cbre.com
LIC. 01933004 | Senior Vice President

TIFFANY BIRD

+1 408 610 0983
tiffany.bird@cbre.com
LIC. 01936335 | Senior Associate

© 2024 CBRE, Inc. All rights reserved. This information has been obtained from sources believed reliable, but has not been verified for accuracy or completeness. You should conduct a careful, independent investigation of the property and verify all information. Any reliance on this information is solely at your own risk. CBRE and the CBRE logo are service marks of CBRE, Inc. All other marks displayed on this document are the property of their respective owners, and the use of such logos does not imply any affiliation with or endorsement of CBRE. Photos herein are the property of their respective owners. Use of these images without the express written consent of the owner is prohibited. PMStudio_January2025

CBRE