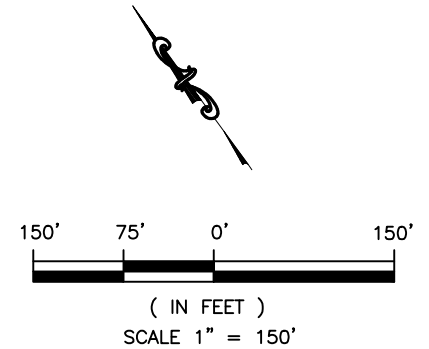
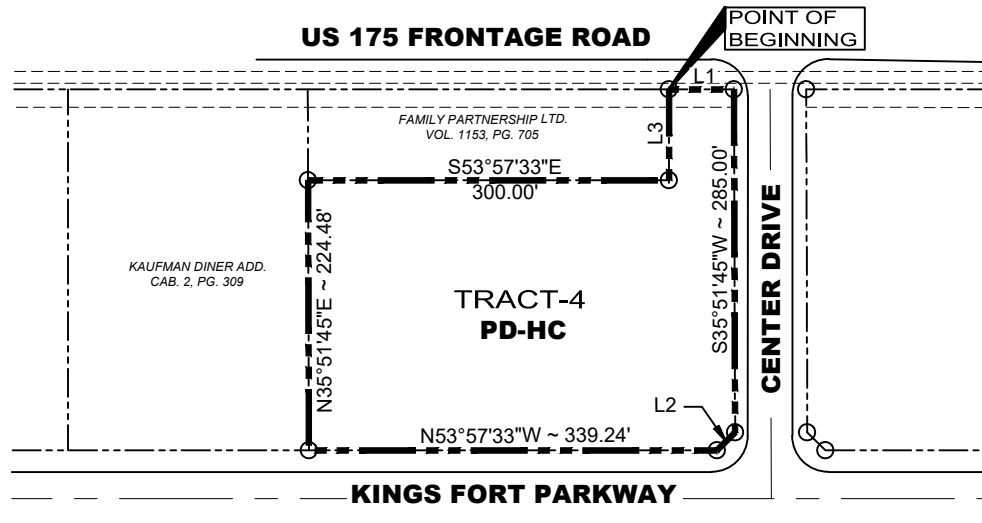


LOCATION MAP
N.T.S.



LINE TABLE		
LINE	LENGTH	BEARING
L1	54.00'	S53°57'33"E
L2	21.18'	S80°57'06"W
L3	75.52'	N36°02'27"E

METES & BOUNDS DESCRIPTION for Tract 4

Being a tract of land situated in the D. Falcon Survey, Abstract No. 151 and being more particularly described by metes and bounds as follows;

BEGINNING at 1/2" iron rod found at the northernmost corner of this tract, said point also being a northeast corner of the Family Partnership Ltd., said corner also being on the south right-of-way line of US Highway 175;

THENCE S 53°57'33" E, along the south right-of-way line of US Highway 175, for a distance of 54.00' to a 1/2" iron rod set for a corner;

THENCE S 35°51'45" W, along the west right-of-way line of Center Drive, for a distance of 285.00' to a 1/2" iron rod set for a corner;

THENCE S 80°57'06" W for a distance of 21.18' to a 1/2" iron rod set for a corner, said point also being on the north right-of-way line of Kings Fort Parkway;

THENCE N 53°57'33" W, along the north right-of-way line of Kings Fort Parkway, for a distance of 339.24' to a 1/2" iron rod found for a corner;

THENCE N 35°51'45" E for a distance of 224.48' to a 1/2" iron rod found for a corner;

THENCE S 53°57'33" E for a distance of 300.00' to a 1/2" iron rod found for a corner;

THENCE N 36°02'27" E for a distance of 75.52' to POINT OF BEGINNING and contain 83,492 SF or 1.92 acres tract of land more or less.

OWNER
JWS LAND, LTD
 5900 S. LAKE FOREST DRIVE, STE # 295
 McKINNEY, Texas 75070
 (469) 213-3000



17819 DAVENPORT ROAD, SUITE 215
 DALLAS, TEXAS 75252
 (972) 248-9651 FAX (972) 248-9681
 TX T.B.P.E. REGISTRATION # F-006974
 T.B.P.L.S. FIRM REGISTERED NO. 100433

**SURVEY EXHIBIT
 TRACT-4**

KINGS FORT DEVELOPMENT
 SITUATED IN THE
 D. FALCON SURVEY, ABSTRACT NO. 151
 CITY OF KAUFMAN
 KAUFMAN COUNTY, TEXAS
 MAY 11, 2017