



FOR LEASE



5175 CHICAGO ST SE, TURNER, OR

Warehouse Space

± 4,320 - 13,000 SF | \$0.75/SF NNN (monthly)

5175 Chicago St SE, Turner, OR 97392

NICK WILLIAMS, CCIM

Vice President | Licensed in OR

503-569-4449

nick.williams@capacitycommercial.com

CURT ARTHUR, SIOR

Principal | Licensed in OR

503-559-7990

curt.arthur@capacitycommercial.com

TORAN SCHMIDGALL

Associate Broker | Licensed in OR

503-932-1969

toran.schmidgall@capacitycommercial.com



PROPERTY SUMMARY

FOR LEASE



PROPERTY DETAILS

Address	5175 Chicago St SE Turner, OR 97392
Available Space	± 4,320 - 13,000 SF
Lease Rate	\$0.75/SF NNN (monthly)
Use Type	Industrial
Building Configuration	<ul style="list-style-type: none">• Two buildings with office + restrooms• Two dry storage / warehouse buildings

Location Features

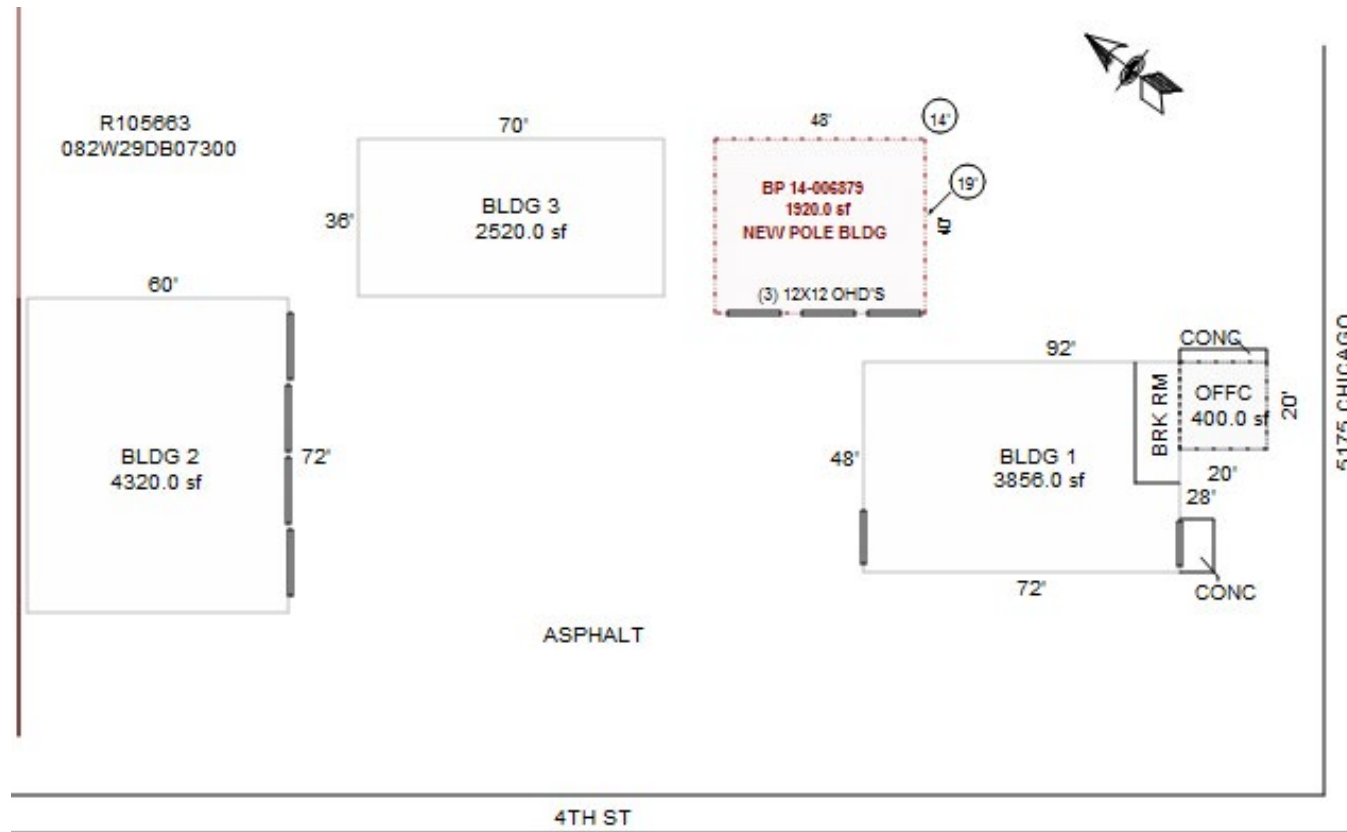
- Securely fenced yard
- Large paved truck maneuvering / turnaround area





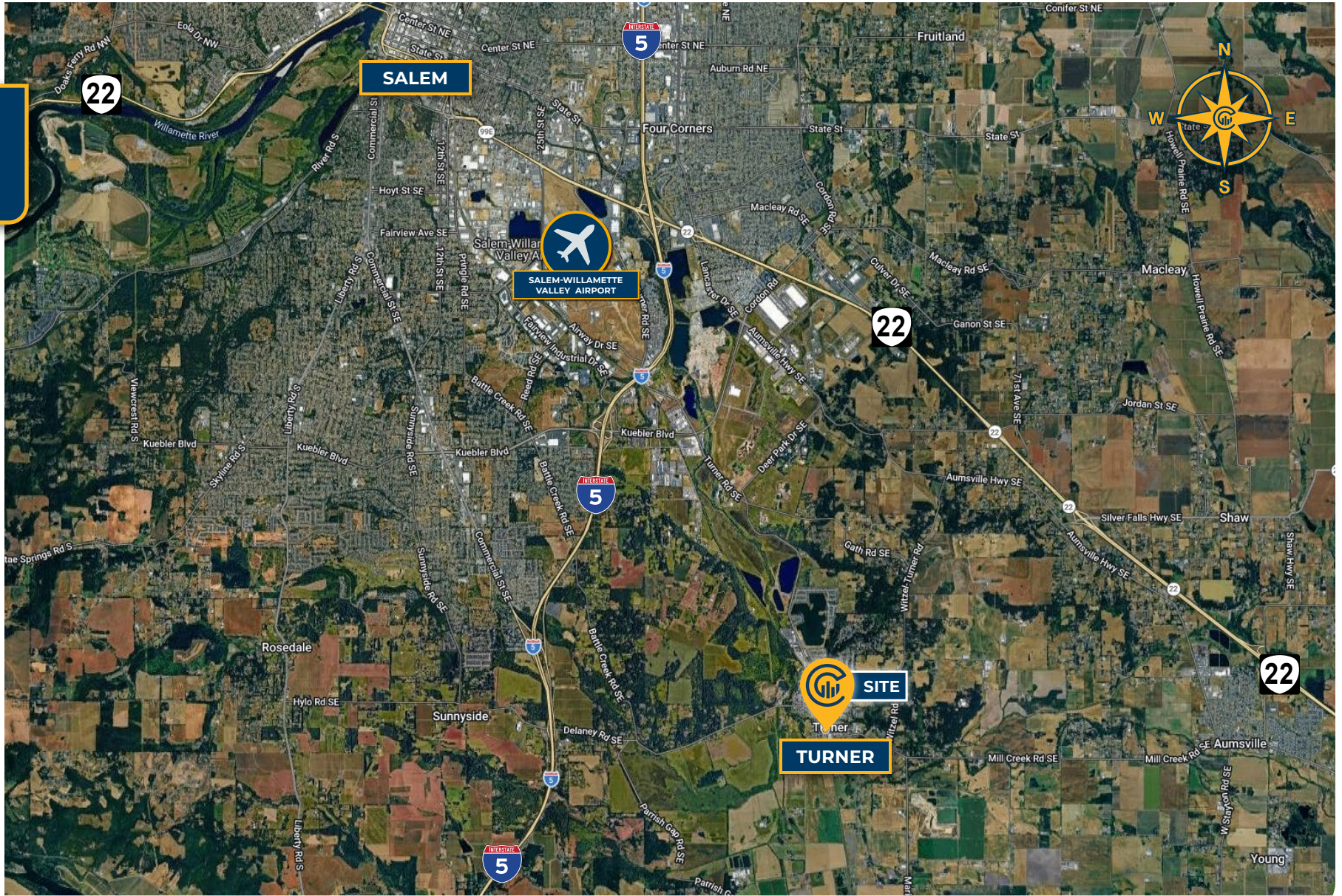
SITE PLAN

SITE PLAN





LOCAL AERIAL MAP



*Average Daily Traffic Volume | Traffic Counts are Provided by REGIS Online at SitesUSA.com ©2025 | Map data ©2025 Google Imagery ©2025, Airbus, CNES / Airbus, Maxar Technologies, Metro, Portland Oregon, Public Laboratory, State of Oregon, U.S. Geological Survey, USDA/FPAC/GEO

 <p>NICK WILLIAMS, CCIM Vice President Licensed in OR 503-569-4449 nick.williams@capacitycommercial.com</p>	<p>CURT ARTHUR, SIOR Principal Licensed in OR 503-559-7990 curt.arthur@capacitycommercial.com</p>	<p>TORAN SCHMIDGALL Associate Broker Licensed in OR 503-932-1969 toran.schmidgall@capacitycommercial.com</p>
---	--	---