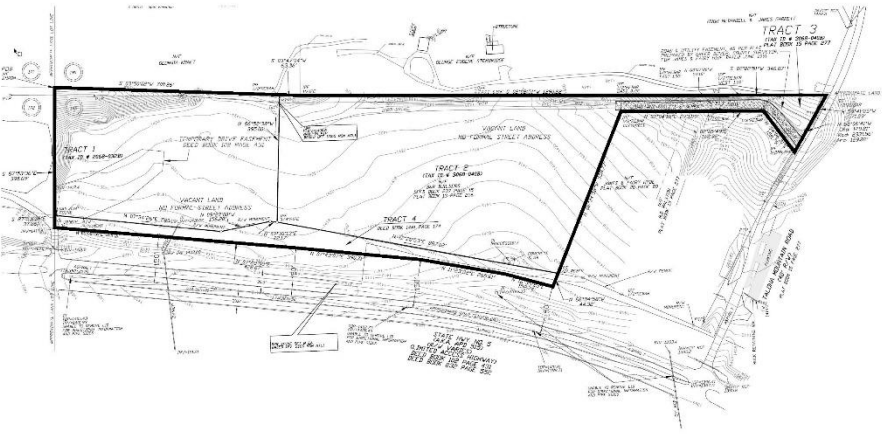




# FOR SALE

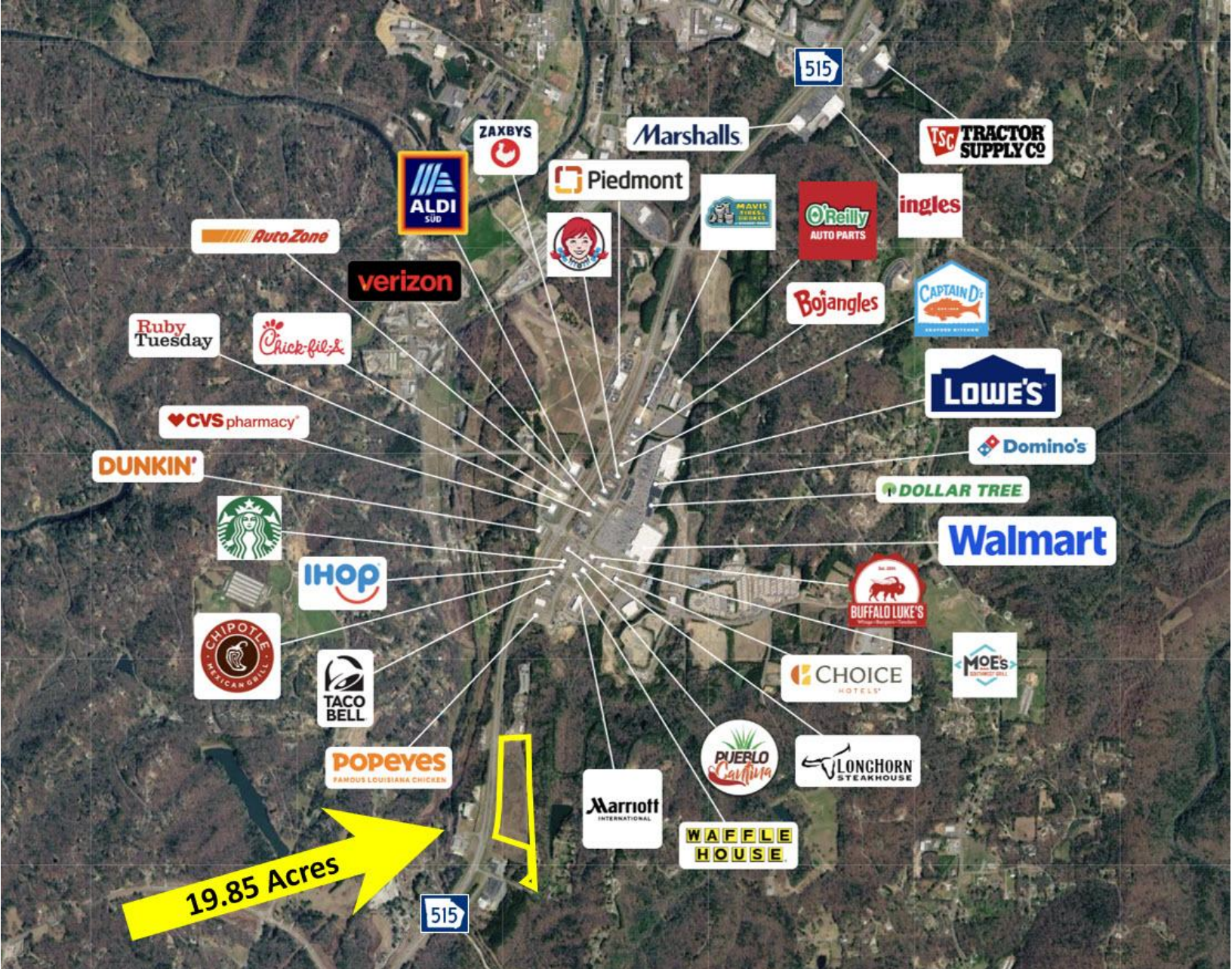
## 7284 Highway 515 East Ellijay, GA

- 19.85 Acres.
- Fully Graded.
- Commercially Zoned.
- 1,563 Feet of Frontage.
- Direct Access to GA 515 with Median Break (at NW corner).
- Access to Talona Mountain Rd.
- Less than 1/2 Mile South of "The Highlands at East Ellijay" (Walmart, Lowe's, etc.)
- Georgia Power.
- 8" Water Line.
- Opportunity Zone.



Ellijay 515 Properties LLC  
(706) 889-4476





**Highway 515  
at Talona Mountain Road  
East Ellijay, GA**

**Ellijay 515 Properties LLC  
(706) 889-4476**

- For Sale.
- 19.85 Acres, Fully Graded.
- Commercially Zoned.
- 1,563 Feet of Frontage.
- Access to GA 515 with Median Break (at NW corner).
- Access to Talona Mountain Road (at SE corner).