

EST. 1871.

DENVER

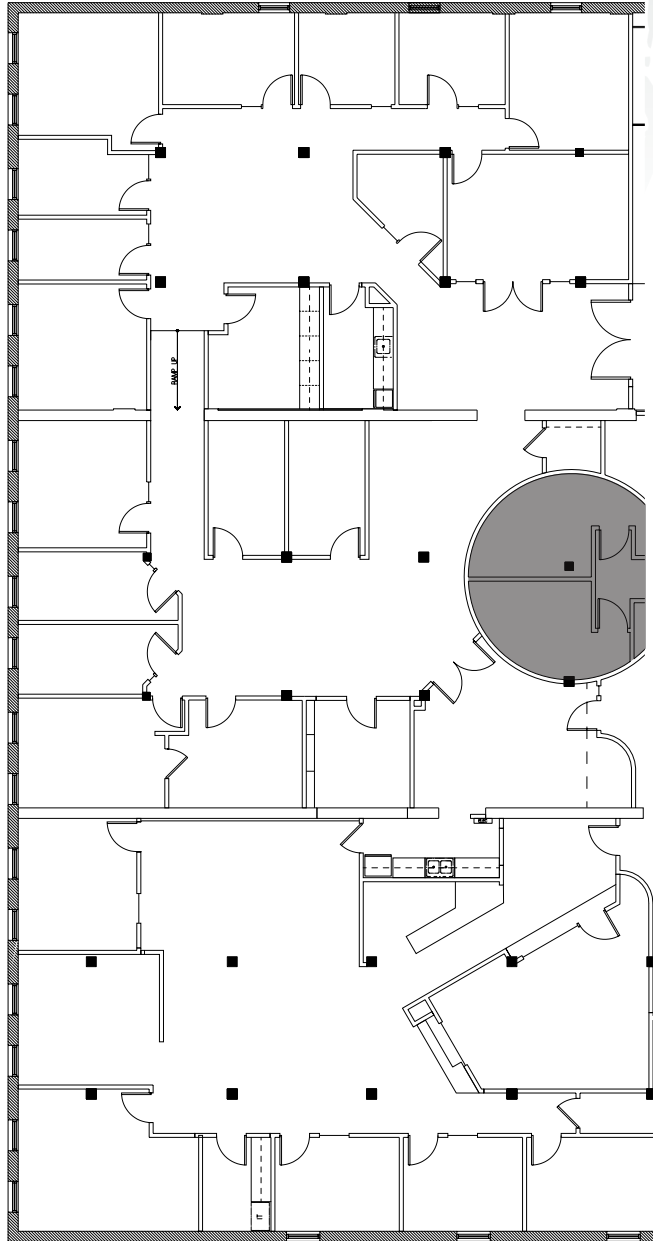
EX

WAZEE

CHANGE

COLO.

1900 WAZEE STREET, LODO



SUITE  
300, 305 & 311  
8,790 RSF  
(CONTIGUOUS)

FOR MORE INFORMATION, CONTACT:

**JAMIE GARD**  
Vice Chairman  
tel. 303-260-4341  
jamie.gard@nmrk.com

**WHITNEY HAKE**  
Senior Managing Director  
tel. 303-260-4202  
whitney.hake@nmrk.com

**GRACE LESSARD**  
Associate Director  
tel. 303-260-4210  
grace.lessard@nmrk.com

**NEWMARK**

