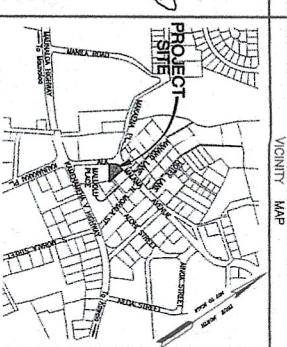
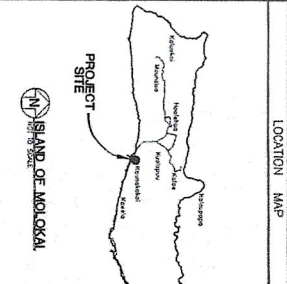


DEMOLITION PLAN
SCALE 1/8" = 10 FT.



APPROVED BY
[Signature]
DIRECTOR OF PUBLIC WORKS
COUNTY OF MAUI
DATE 04-30-14

DATE MAY 13 2013
DIRECTOR OF WATER SUPPLY
COUNTY OF MAUI
DATE

KAUNAKAKAI COMMERCIAL COMPLEX
T.M.K.: 5-3-02: 081
KAUNAKAKAI, MOLOKAI, HAWAII
DEMOLITION PLAN

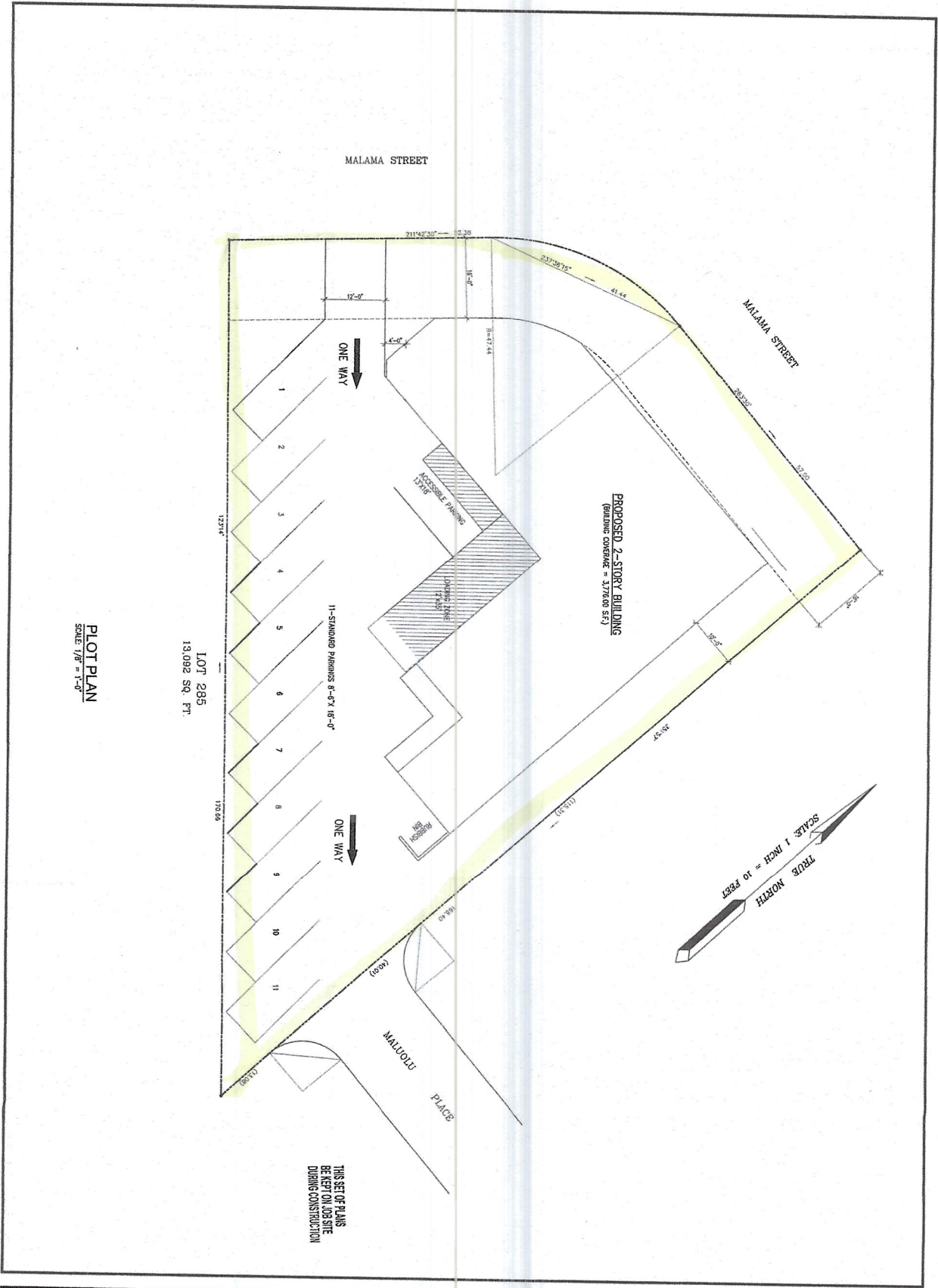
REVISION	DATE	NOTE

OTOMO
ENGINEERING, INC.
205 S. W. 10TH ST. SUITE 200
MOLOKAI, HI 96768
TEL: (808) 241-5113

ASHLEY N. M. ROAD
LICENSED PROFESSIONAL ENGINEER
NO. 11234
EXPIRES 12/31/15

PREPARED BY: 4-28-13
DRAWN BY: 4-28-13
CHECKED BY: 4-28-13
DATE: 4-28-13

PROJECT NO. **C-1**
OF SHEETS



PLOT PLAN
SCALE: 1/8" = 1'-0"

LOT 285
13,092 SQ. FT.

THIS SET OF PLANS
BE KEPT ON JOB SITE
DURING CONSTRUCTION

Date	SEPT. 2018
Scale	AS NOTED
Drawn	DP
Check by	SAHARA
Sheet No.	T-2
of	Sheets

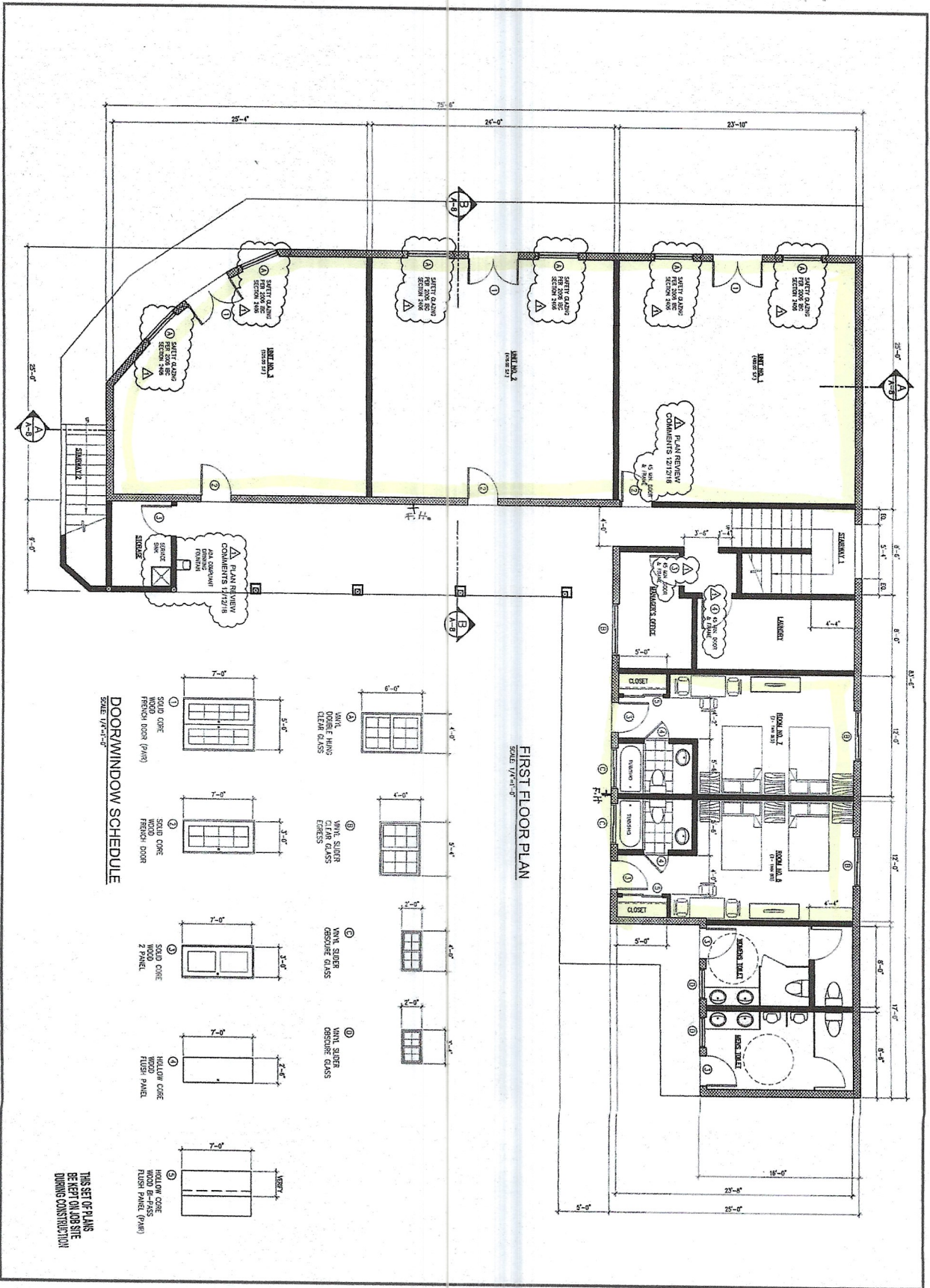
**PROPOSED NEW COMMERCIAL BUILDING FOR:
WADA FAMILY**
56 ALA MALAMA STREET
KAUNAKAKAI, HAWAII 96748
T. M. K. (2)5-3-002.081

ADS
Architectural Drafting Service
P.O. BOX 1718
Kaunakakai, Hawaii 96748
Tel. No. (808) 553-9845
Fax No. (808) 553-3952
EMAIL: LUCAS@HAWAIIANTEL.BIZ

THIS WORK WAS PREPARED BY ME OR UNDER MY CLOSE PERSONAL SUPERVISION AND I AM A LICENSED ARCHITECT IN THE STATE OF HAWAII.

Professional Seal: Lucas, David M., No. 4222, State of Hawaii, License Expires 12/31/2022

REVISION	BY



FIRST FLOOR PLAN
SCALE: 1/4" = 1'-0"

DOOR/WINDOW SCHEDULE
SCALE: 1/4" = 1'-0"

THIS SET OF PLANS
IS TO BE KEPT ON JOB SITE
DURING CONSTRUCTION

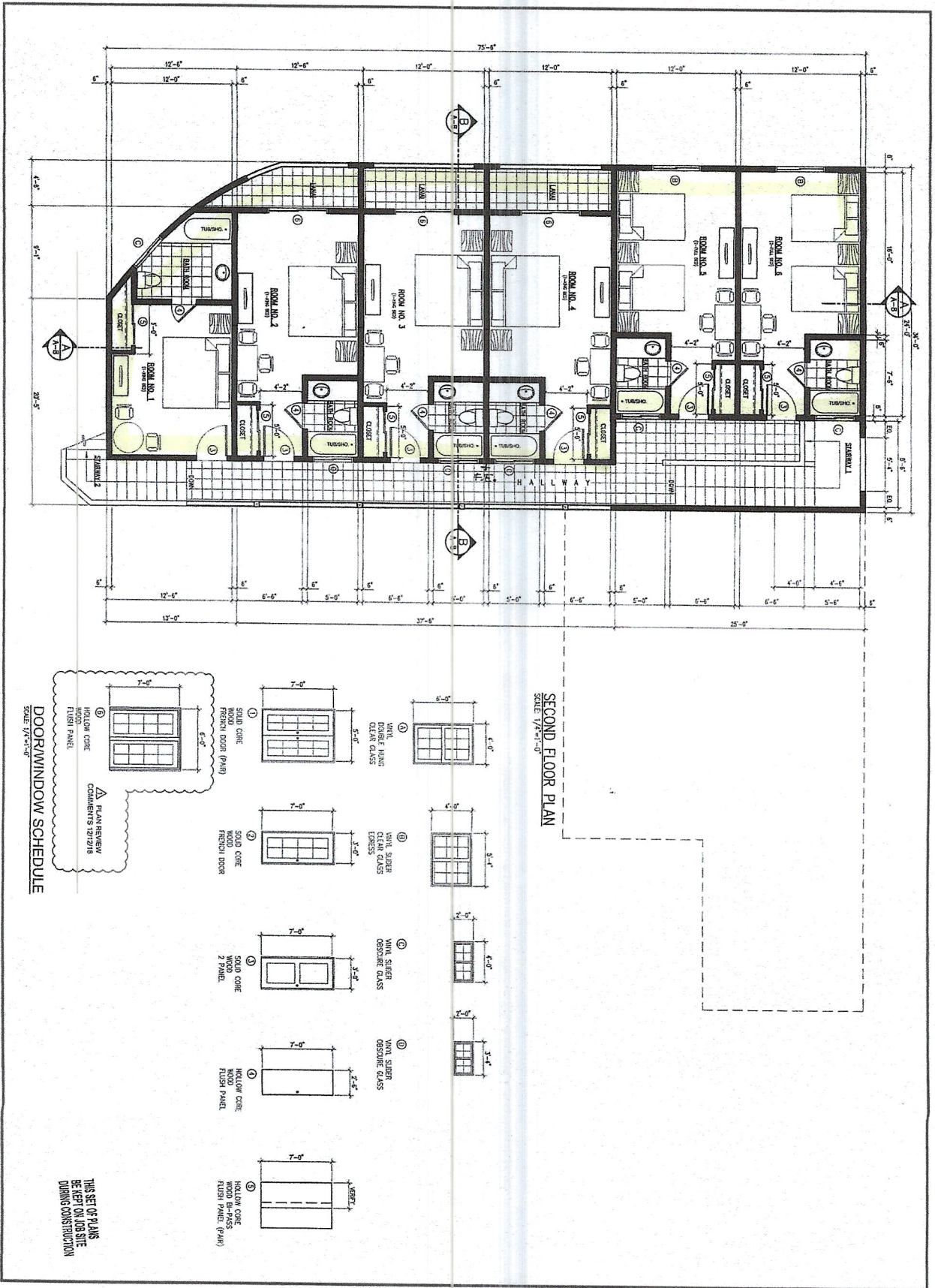
Date	SEPT 2018
Scale	AS NOTED
Drawn	BT
Check by	UD
Job	SASION
Sheet No.	A-1
of	Sheets

PROPOSED NEW COMMERCIAL BUILDING FOR:
WADA FAMILY
56 ALA MALAMA STREET
KAUNAKAKAI, HAWAII 96748
T. M. K. (2)5-3-002:081

ADS
Architectural Drafting Service
P.O. BOX 1718
Kaunakakai, Hawaii 96748
Tel. No. (808) 553-5045
Fax. No. (808) 553-5052
EMAIL: LIZ@HAWAIIANTEL.BIZ

THIS WORK WAS PREPARED BY ME OR UNDER MY CLOSE PERSONAL SUPERVISION AND I AM A LICENSED ARCHITECT IN THE STATE OF HAWAII.
I AM NOT PROVIDING CONTRACT ADMINISTRATION SERVICES.
Contract Administrator
LIZ@HAWAIIANTEL.BIZ

REVISION	BY
1	PLANS/REVISION
2	COMMENTS/REVISION
3	
4	
5	
6	
7	
8	
9	
10	



SECOND FLOOR PLAN
SCALE 1/4"=1'-0"

DOOR/WINDOW SCHEDULE
SCALE 1/4"=1'-0"

- ① SOLID CORE WOOD FLUSH PANEL (9/16")
- ② VINYL SIBER CLEAR GLASS
- ③ VINYL SIBER OBTUSCURE GLASS
- ④ VINYL SIBER OBTUSCURE GLASS
- ⑤ HOLLOW CORE WOOD FLUSH PANEL (9/16")
- ⑥ VINYL SIBER CLEAR GLASS
- ⑦ VINYL SIBER OBTUSCURE GLASS
- ⑧ VINYL SIBER OBTUSCURE GLASS
- ⑨ VINYL SIBER OBTUSCURE GLASS
- ⑩ VINYL SIBER OBTUSCURE GLASS
- ⑪ VINYL SIBER OBTUSCURE GLASS
- ⑫ VINYL SIBER OBTUSCURE GLASS
- ⑬ VINYL SIBER OBTUSCURE GLASS
- ⑭ VINYL SIBER OBTUSCURE GLASS
- ⑮ VINYL SIBER OBTUSCURE GLASS
- ⑯ VINYL SIBER OBTUSCURE GLASS
- ⑰ VINYL SIBER OBTUSCURE GLASS
- ⑱ VINYL SIBER OBTUSCURE GLASS
- ⑲ VINYL SIBER OBTUSCURE GLASS
- ⑳ VINYL SIBER OBTUSCURE GLASS
- ㉑ VINYL SIBER OBTUSCURE GLASS
- ㉒ VINYL SIBER OBTUSCURE GLASS
- ㉓ VINYL SIBER OBTUSCURE GLASS
- ㉔ VINYL SIBER OBTUSCURE GLASS
- ㉕ VINYL SIBER OBTUSCURE GLASS
- ㉖ VINYL SIBER OBTUSCURE GLASS
- ㉗ VINYL SIBER OBTUSCURE GLASS
- ㉘ VINYL SIBER OBTUSCURE GLASS
- ㉙ VINYL SIBER OBTUSCURE GLASS
- ㉚ VINYL SIBER OBTUSCURE GLASS
- ㉛ VINYL SIBER OBTUSCURE GLASS
- ㉜ VINYL SIBER OBTUSCURE GLASS
- ㉝ VINYL SIBER OBTUSCURE GLASS
- ㉞ VINYL SIBER OBTUSCURE GLASS
- ㉟ VINYL SIBER OBTUSCURE GLASS
- ㊱ VINYL SIBER OBTUSCURE GLASS
- ㊲ VINYL SIBER OBTUSCURE GLASS
- ㊳ VINYL SIBER OBTUSCURE GLASS
- ㊴ VINYL SIBER OBTUSCURE GLASS
- ㊵ VINYL SIBER OBTUSCURE GLASS
- ㊶ VINYL SIBER OBTUSCURE GLASS
- ㊷ VINYL SIBER OBTUSCURE GLASS
- ㊸ VINYL SIBER OBTUSCURE GLASS
- ㊹ VINYL SIBER OBTUSCURE GLASS
- ㊺ VINYL SIBER OBTUSCURE GLASS

THIS SET OF PLANS
IS TO BE KEPT ON THE SITE
DURING CONSTRUCTION

Date	SEPT 2018
Scale	AS NOTED
Drawn	UP
Check by	LI
Job	SUDA1
Sheet No	A-2
of	Sheets

**PROPOSED NEW COMMERCIAL BUILDING FOR:
WADA FAMILY**
56 ALA MALAMA STREET
KAUNAKAKAI, HAWAII 96748
T. M. K. (2)5-3-002:081

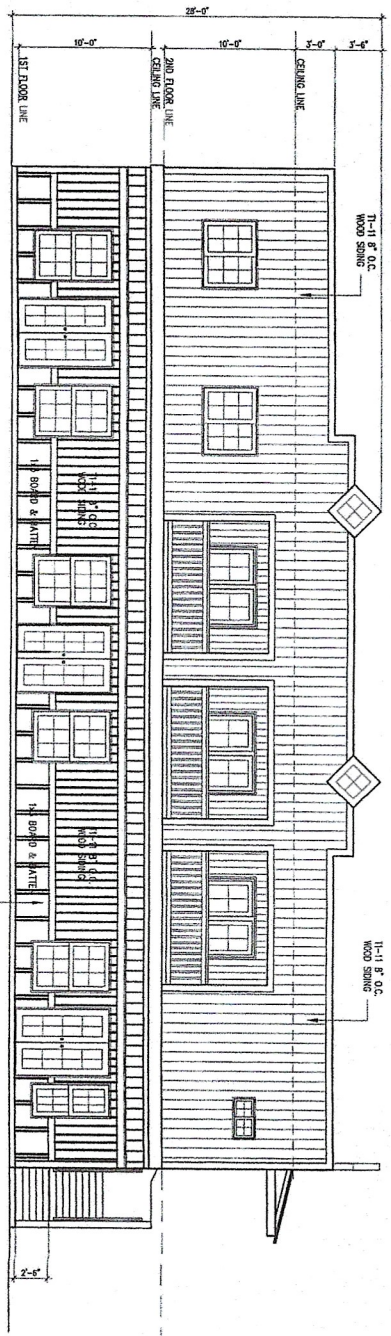
ADS
Architectural Drafting Service
P.O. BOX 1718
Kaunakakai, Hawaii 96748
Tel. No. (808) 553-9145
Fax. No. (808) 553-3952
EMAIL: LUCAS@HAWAIIANTEL.BIZ

THIS PROJECT IS REGISTERED
BY ME OR UNDER MY
SUPERVISION AND I AM A
LICENSED ARCHITECT IN THE STATE OF HAWAII.
ALL WORK SHALL BE UNDER MY
SUPERVISION AND CONTROL.

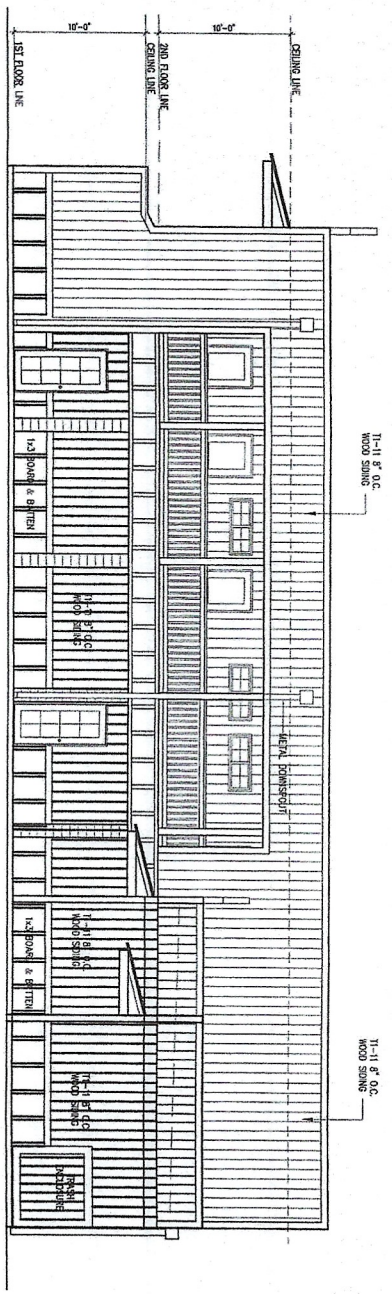
Lucas
Architect
HAWAIIANTEL.BIZ
SCALE: 1/4"=1'-0"
DATE: 9-20-18

THOMAS E. HARRIS
REGISTERED PROFESSIONAL ENGINEER
No. 10288
HAWAII
DATE: 9-20-18

REVISION	BY
1	PLANNING
2	COMMENTS
3	REVISED
4	REVISED
5	REVISED
6	REVISED
7	REVISED
8	REVISED
9	REVISED
10	REVISED



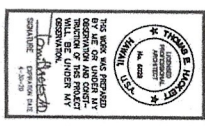
FRONT ELEVATION
SCALE 1/4"=1'-0"



REAR ELEVATION
SCALE 1/4"=1'-0"

THIS SET OF PLANS
BE KEPT ON JOB SITE
DURING CONSTRUCTION

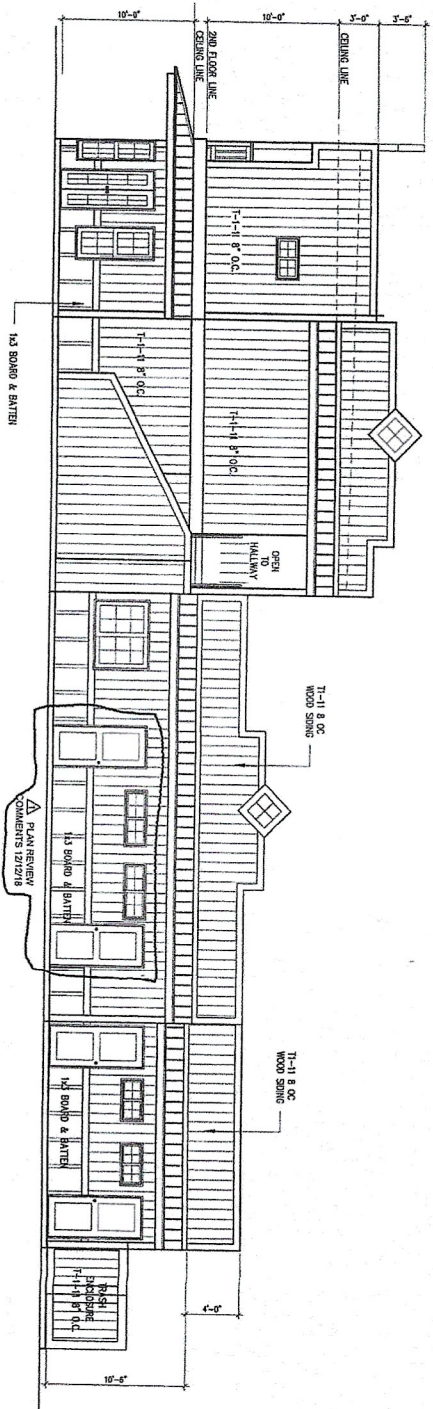
REVISION	BY



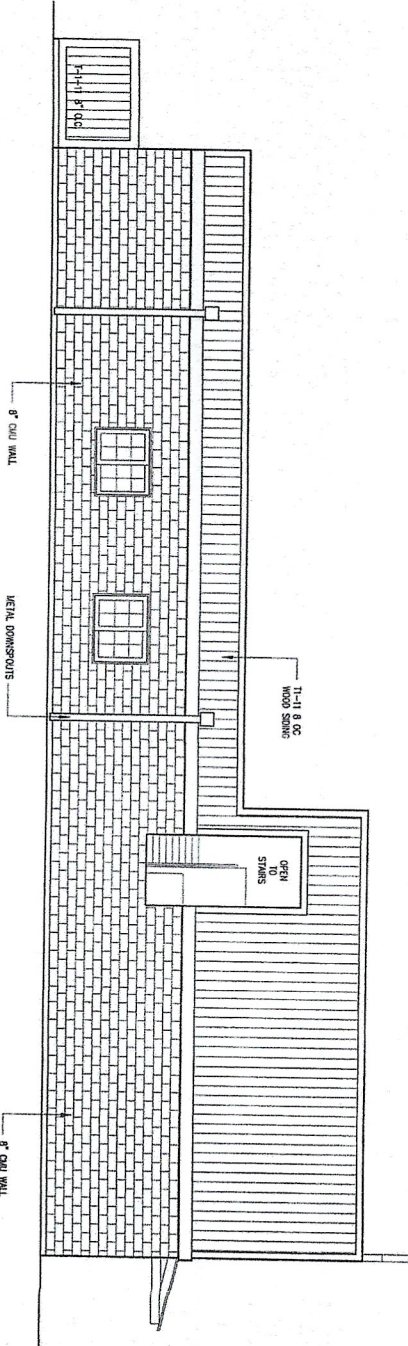
ADS
Architectural Drafting Service
P.O. BOX 1718
Kauaia, Hawaii 96748
Tel. No. (808) 553-9045
Fax. No. (808) 553-3952
EMAIL: LUCAS@HAWAIIARTL.BIZ

PROPOSED NEW COMMERCIAL BUILDING FOR:
WADA FAMILY
56 ALA MALAMA STREET
KAUNAKAKAI, HAWAII 96748
T. M. K. (2)5-3-2:81

Date: SEPT 2018
Scale: AS NOTED
Drawn: BT
Checked by: UT
Job: SCS004
Sheet No: **A-3**
of Sheets



RIGHT SIDE ELEVATION
SCALE: 1/4"=1'-0"

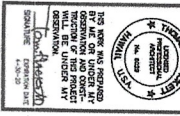


LEFT SIDE ELEVATION
SCALE: 1/4"=1'-0"

THIS SET OF PLANS
BE PERTAINING TO THE
DRAWING CONSTRUCTION

REVISION	BY

PLAN REVIEW
COMMENTS 12/21/18



ADS
Architectural Drafting Service
P.O. BOX 1718
Kaunakakai, Hawaii 96748
Tel. No. (808) 553-9845
Fax. No. (808) 553-3952
EMAIL: LUCIES@HAWAIIANTEL.BIZ

PROPOSED NEW COMMERCIAL BUILDING FOR:
WADA FAMILY
56 ALA MALAMA STREET
KAUNAKAKAI, HAWAII 96748
T. M. K. (2)5-3-002:081

Date	SEPT 2018
Scale	AS NOTED
Drawn	JP
Check by	LT
Job	SYSIDA
Sheet No	A-4
of	Sheet