



INDUSTRIAL BUILDING AVAILABLE



LOCATION



2102 Jackson Street
Huntsville, AL 35805

AVAILABLE



For Sale (Whole Property)

Approx. 21,000 SF

For Lease

Approx. 11,000 SF

PRICE



For Sale (Whole Property)

\$1,599,900

For Lease

\$7.00 PSF MG

ABOUT THE PROPERTY

Located on Jackson Street near Downtown Huntsville, the property offers convenient access to Memorial Parkway and I-565. Its central position provides easy connectivity to nearby businesses, industrial areas, and major city routes.

PROPERTY HIGHLIGHTS:

- 16' clear height (18.5' at deck in center)
- Includes approximately 3,500 SF of built-out office space
- Zoning: City of Huntsville- Light Industry (LI)
- Owner-occupied; will vacate upon purchase
- Located near Downtown Huntsville with easy access to all major roadways



CRUNKLETON
COMMERCIAL REAL ESTATE GROUP

FOR MORE INFORMATION:

Walker Purvis | Director of Industrial/Office

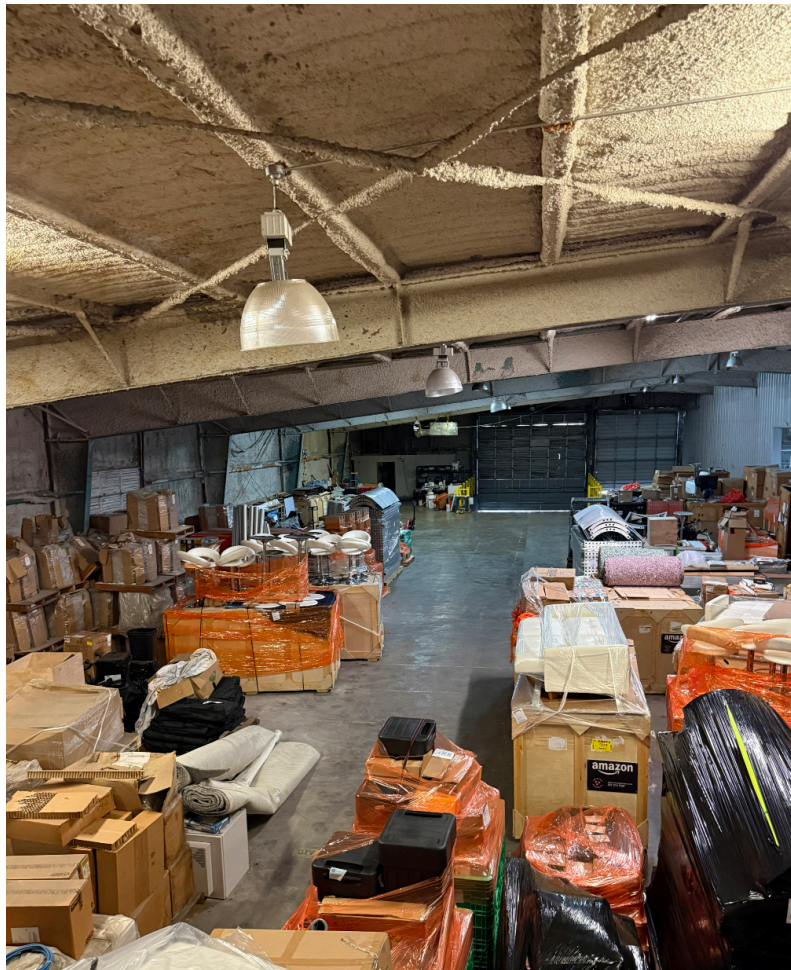
✉ Walker@crunkletonassociates.com

☎ 256-384-7606

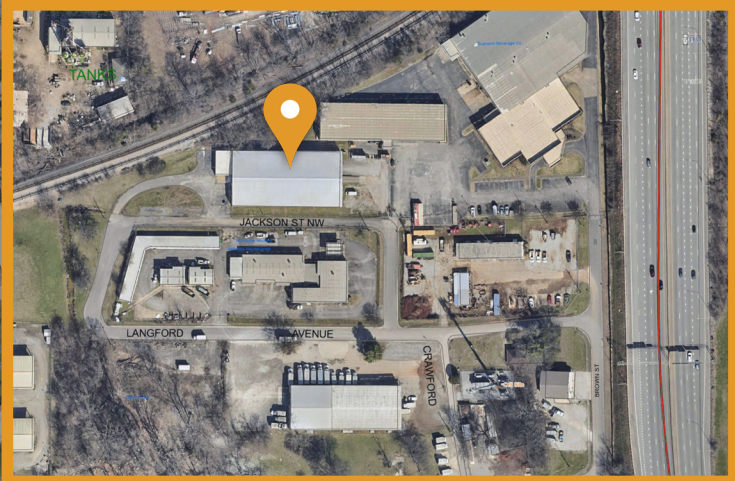
PHOTOS



PHOTOS



AREA MAP



planet fitness
COSTCO
 WHOLESALE
 BAM! BOOKS-A-MILLION
 FIVE GUYS BURGERS and FRIES
 STAPLES

STOVE HOUSE
 komado ramen
 CO-OP BREWERY
 THE FLYING BISCUIT Cafe
 Charlie Foster's ESPRESSO WINE BAR
 Blue Plate
 FRESKō

THE Foundry
 Flying Biscuit Cafe
 tazikis MEDITERRANEAN CAFE
 FOOD CITY

CAMPUS 805
 STRAIGHT TO ALE SOUTHERN BORN-SOUTHERN BREWED

SPRINGHILL SUITES BY MARRIOTT
 HUNTSVILLE HOSPITAL
 Publix
 Chick-fil-A
 Starbucks

U-HAUL
 AutoZone
 UNITED STATES POSTAL SERVICE

VERTICAL HOUSE RECORDS
 LOWE MILL
 Piper & Leaf TEA COMPANY
 ARTS & Entertainment Huntsville, Alabama

Office DEPOT
 ACURA

CVS pharmacy
 BURGER KING
 Walgreens

SUPER CHIX Children & Children's
 REGYMEN FITNESS
 Bad Daddy's BURGER BAR
 JUST LOVE COFFEE CAFE

DOLLAR GENERAL

Milton Frank Stadium

Firestone

WHOLE FOODS MARKET
 FARM BURGER
 CHOP N FRESH
 Chuy's

CRUNKLETON
 COMMERCIAL REAL ESTATE GROUP

FOR MORE INFORMATION:
 Walker Purvis | Director of Industrial/Office
 Walker@crunkletonassociates.com
 256-384-7606