

# For Lease



**Jinli Zhao**

Broker

832.878.8698

[zhaojinli@yahoo.com](mailto:zhaojinli@yahoo.com)

**Julian Chang**

Broker Associate

832.788.8889

[its8889@yahoo.com](mailto:its8889@yahoo.com)

**Edison Fang**

Broker Associate

832.805.9354

[edisonfang1991@gmail.com](mailto:edisonfang1991@gmail.com)



2230-2260 FM 1092 Rd, Missouri City, TX 77459

# PROPERTY INFO



## PROPERTY DESCRIPTION

### Prime Retail Opportunity Along FM 1092 (Murphy Rd)

Located along the highly traveled FM 1092 (Murphy Road) corridor in Missouri City, this neighborhood retail center offers excellent visibility and convenient access for customers. Surrounded by established residential communities and a strong mix of local businesses, the property benefits from steady daily traffic and a reliable consumer base.

Position your business in one of Missouri City's most active commercial corridors, ideal for retail, restaurant, medical, and service-oriented users seeking strong exposure and long-term stability.

## SPACE AVAILABILITY

UNIT	SF	RATE
2240	1200	\$21.00 /SF/YR
2248	1500	\$21.00 /SF/YR
2260	1250	\$21.00 /SF/YR

**Jinli Zhao**

Broker

832.878.8698

zhaojinli@yahoo.com

**Julian Chang**

Broker Associate

832.788.8889

its8889@yahoo.com

**Edison Fang**

Broker Associate

832.805.9354

edisonfang1991@gmail.com



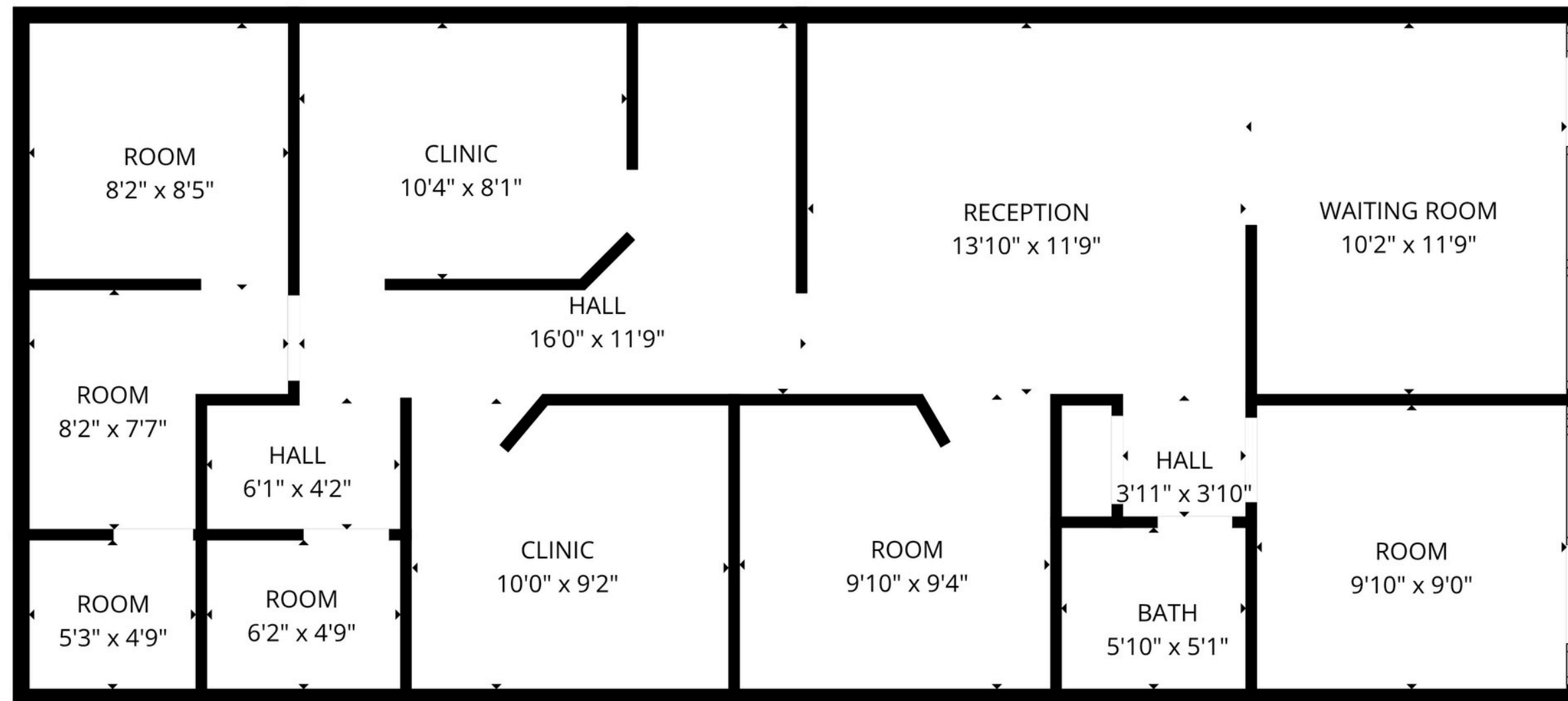
2230-2260 FM 1092 Rd, Missouri City, TX 77459

# PROPERTY PHOTOS



# For Lease

## FLOOR PLAN



**Jinli Zhao**

Broker

832.878.8698

zhaojinli@yahoo.com

**Julian Chang**

Broker Associate

832.788.8889

its8889@yahoo.com

**Edison Fang**

Broker Associate

832.805.9354

edisonfang1991@gmail.com



2230-2260 FM 1092 Rd, Missouri City, TX 77459