



**FOR LEASE**

**Suite 203 • 1,265 - 3,943 SF • \$15/SF MG**

**1000 E BROAD ST. COLUMBUS, OH 43205**



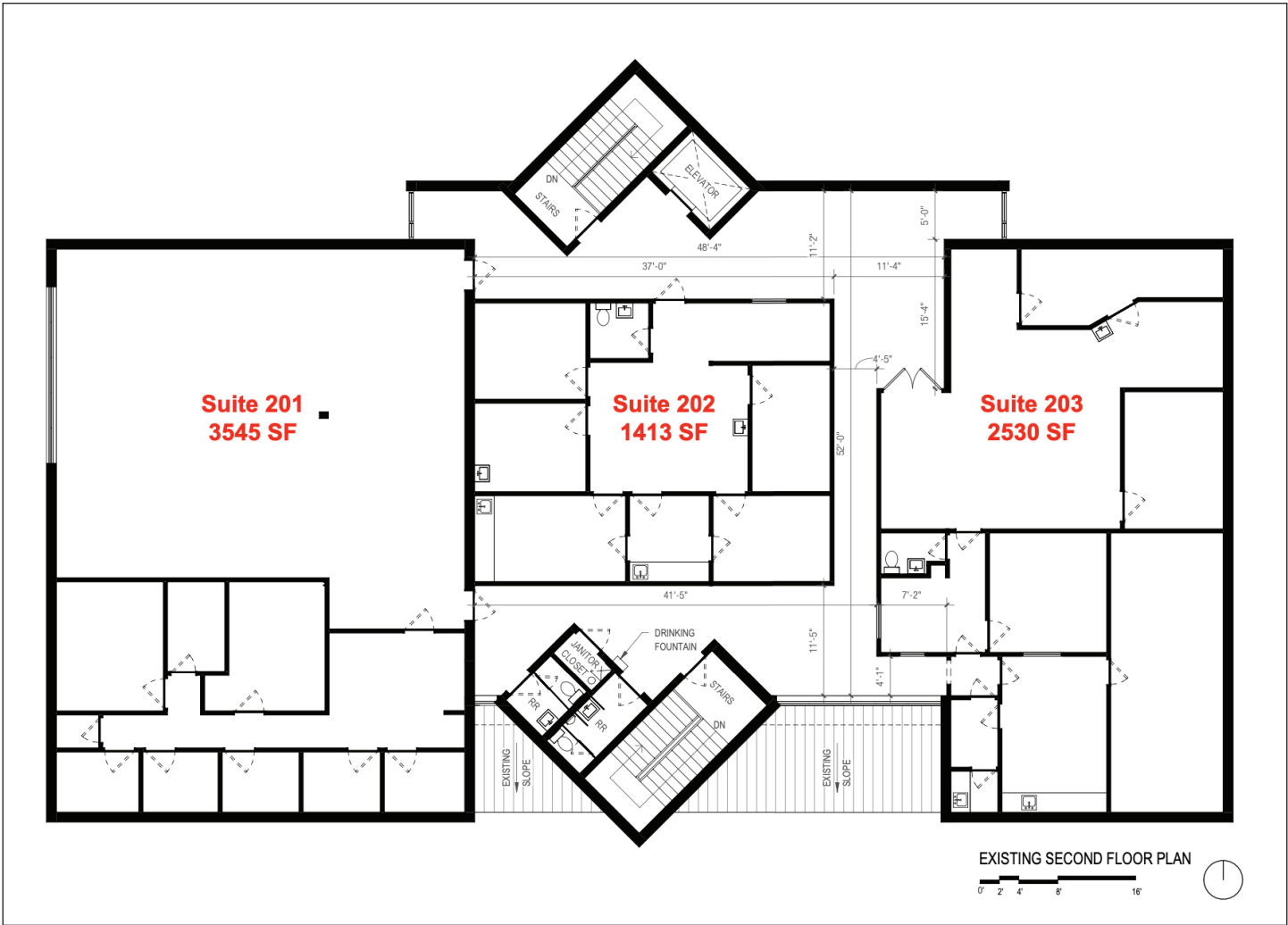
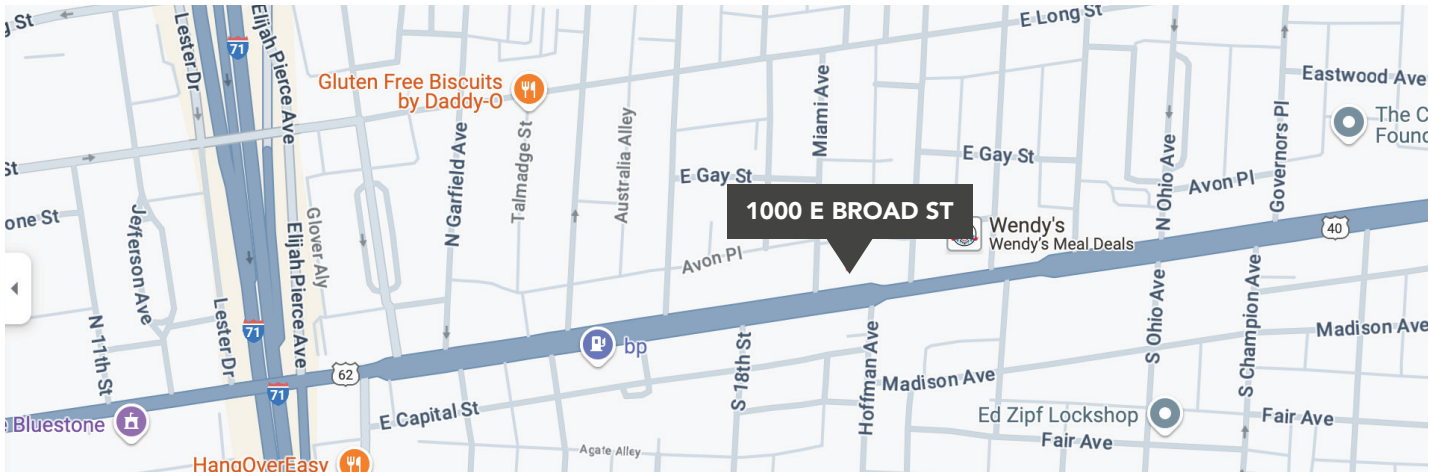
**HIGHLIGHTS:**

- Versatile space perfect for medical offices, outpatient services, or specialty practices; features reception areas, large staff break rooms, private restrooms, exam rooms, and additional private offices
- Building under new management with major improvement projects underway
- High-visibility location on E. Broad Street, a major artery in Columbus, providing easy access for patients
- Proximity to major hospitals and medical centers, including Nationwide Children's Hospital, Ohio State East Hospital and OhioHealth Grant Medical Center
- Ample parking for staff and patients with convenient access to public transportation
- Fully ADA-compliant facility with elevator access to all three floors



**Dustin Braun**  
614.638.0368  
dustin@braundonnell.com

**MAP + EXISTING FLOOR PLAN**



---

ENTRYWAY + INTERIOR RENDERING



INTERIOR HALLWAY, WORKROOM + RECEPTION



---

CONFERENCE ROOM + PRIVATE OFFICES

