

PARK NORTH I & II

NOW LEASING

8200

0158

stewart


OAKPOINT

8200/8240 N Mopac Expy
Austin, Texas 78759



BUILDING OVERVIEW

Two 3-story office buildings located conveniently in North Austin on MoPac Expressway with 24/7 key card access, fiber optic cabling, nightly security & on-site management. Providing ample, state-of-the-art amenities and a great location, Park North is the ideal modern office space for any company.

PARK NORTH 8200

BUILT IN

1981*

RENTABLE SPACE

134,924 sf*

PARKING RATIO

3.5:1,000*

AVG FLOOR PLATE

22,261 sf*

FLOORS

3*

LOT

3.04 acres*

RENOVATED

2023*

UNFINISHED CEILING HEIGHT

I: 12' II: 13'

*Applies to both Park North I and Park North II



FEATURED AMENITIES

Outdoor communal spaces, newly built fitness and conference centers, and prime proximity to Austin's top amenities.



Newly built fitness center



Large conference center



Outdoor communal space



Generous parking



Prime proximity to Austin's top amenities



24/7 key card access with nightly security



On-site property management





Top amenities in close proximity.

PARK NORTH I & II

1 SHOPS AT ARBOR WALK

- Marshalls
- Chipotle
- BJ's Restaurant and Brewhouse
- Lupe Tortilla
- Mighty Fine Burgers
- Southside Market & BBQ

2 AUSTIN HILLS

- Trader Joe's
- CAVA
- Modern Market
- Newk Eatery
- Corner Bakery
- Honest Mary

3 GATEWAY

- Whole Foods Market
- Target
- The Arboretum
- Dave & Buster's
- IchiUmi Sushi
- Simar Seafood & Steak

4 THE DOMAIN

- Topgolf
- Lululemon
- Nordstrom
- Dillard's
- Velvet Taco
- Apple

5 NORTH SHOAL CREEK

- Starbucks
- P. Terry's Burger Stand
- Reunion Park
- Waterloo Ice House
- Cabo Bob's
- Jack Allen's

6 QUARRY

- Chick-fil-A
- Whole Foods
- Target
- Trek Bicycle
- Marco's Pizza
- Schlotzsky's



AVAILABILITY

Park North I, Suite 200

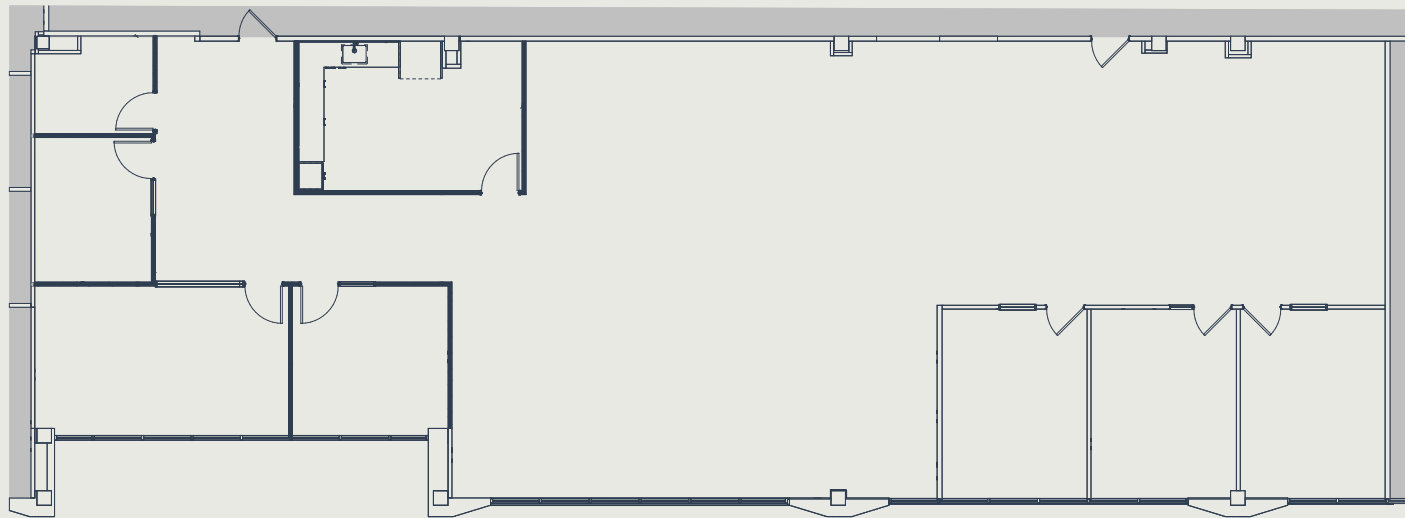
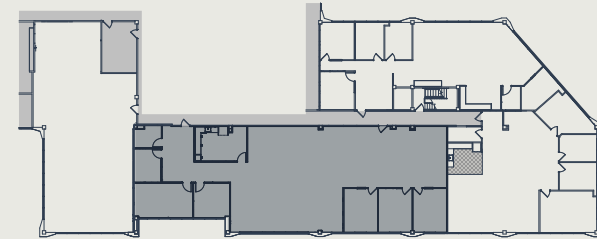
SIZE

4,408 sf

WHITEBOX

Available Now

- LEVEL 3
- ▶ LEVEL 2
- LEVEL 1





AVAILABILITY

Park North I, Suite 295

SIZE

2,586 sf

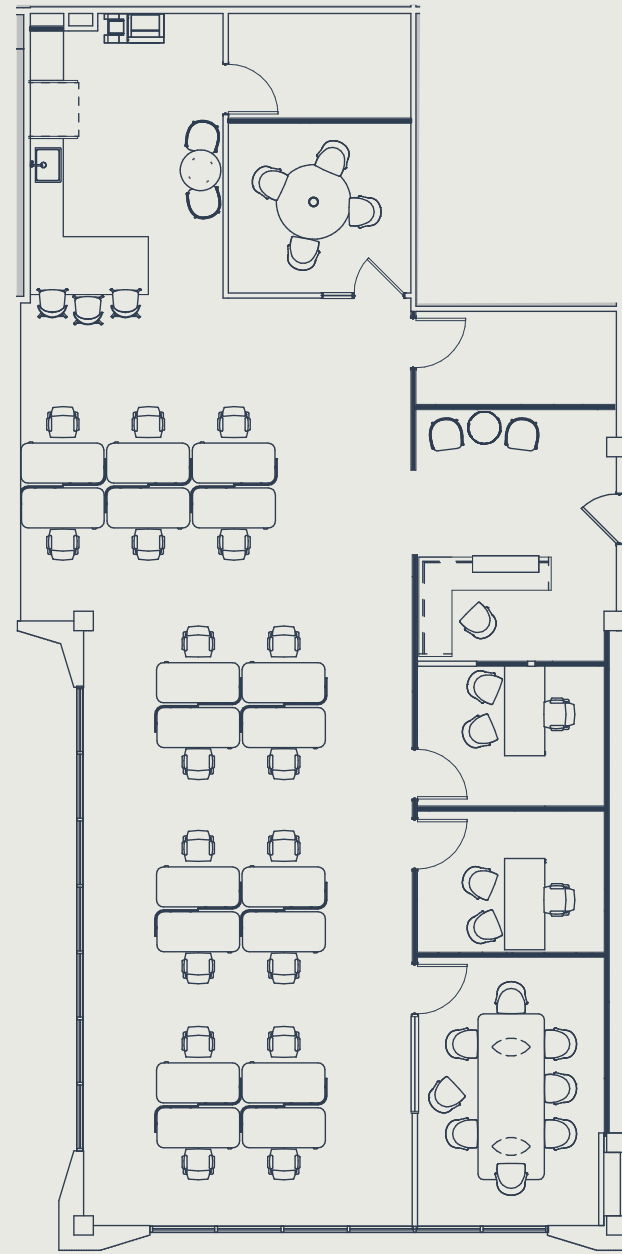
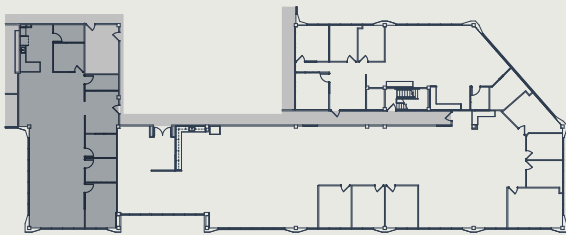
SPEC SUITE

Available Now

LEVEL 3

▶ LEVEL 2

LEVEL 1





AVAILABILITY

Park North I, Suite 310

SIZE

2,912 sf

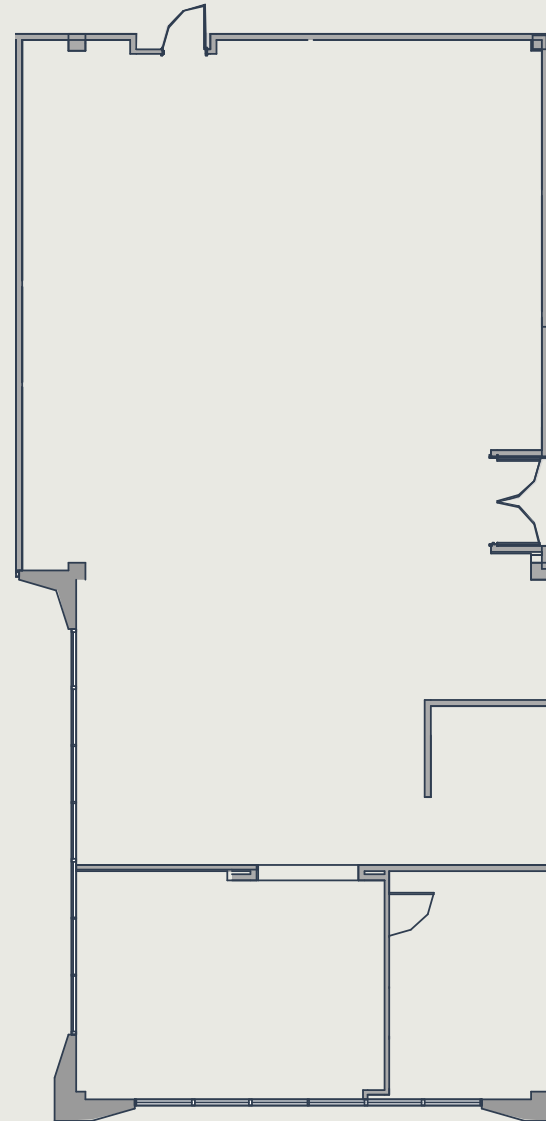
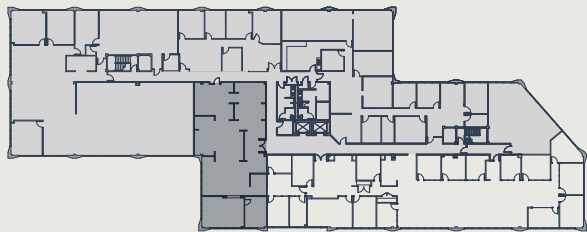
AVAILABILITY DATE

5/1/2026

▶ LEVEL 3

LEVEL 2

LEVEL 1





AVAILABILITY

Park North II, Suite 145

SIZE

749 sf

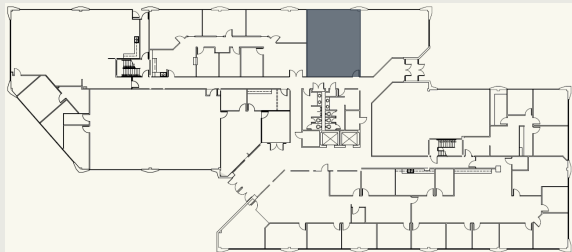
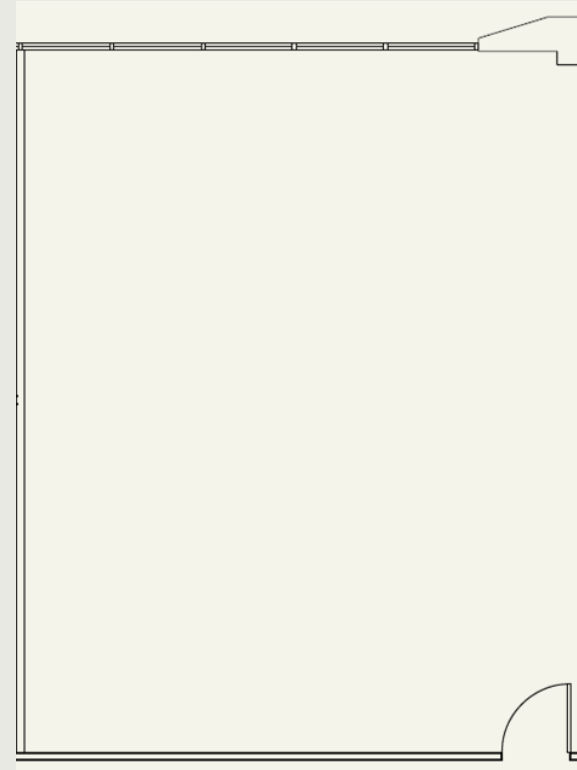
AVAILABILITY DATE

5/1/2026

LEVEL 3

LEVEL 2

▶ LEVEL 1





AVAILABILITY

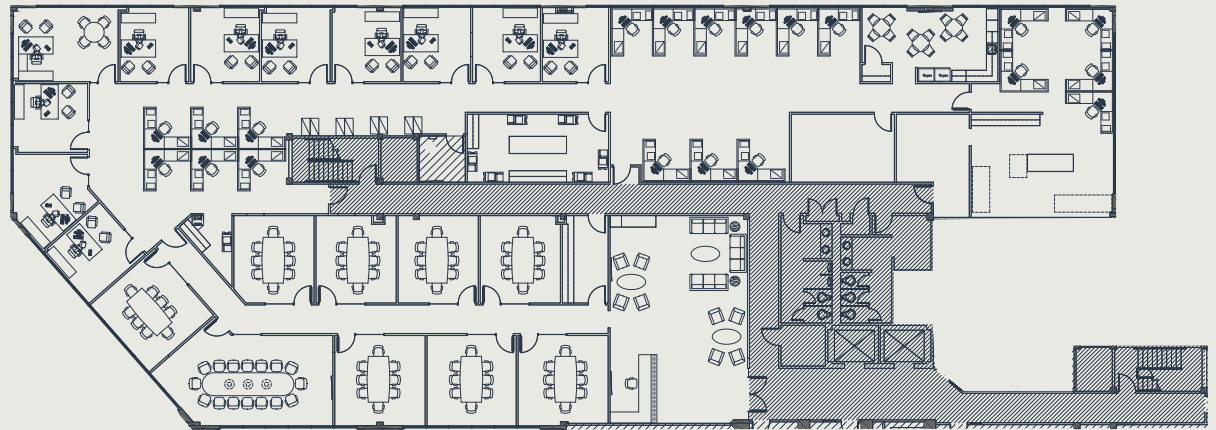
Park North II, Suite 200

SIZE

11,917 sf

AVAILABILITY DATE

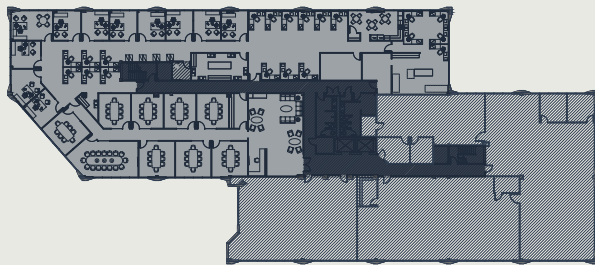
5/1/2026



LEVEL 3

▶ LEVEL 2

LEVEL 1





AVAILABILITY

Park North II, Suite 310

SIZE

2,536 sf

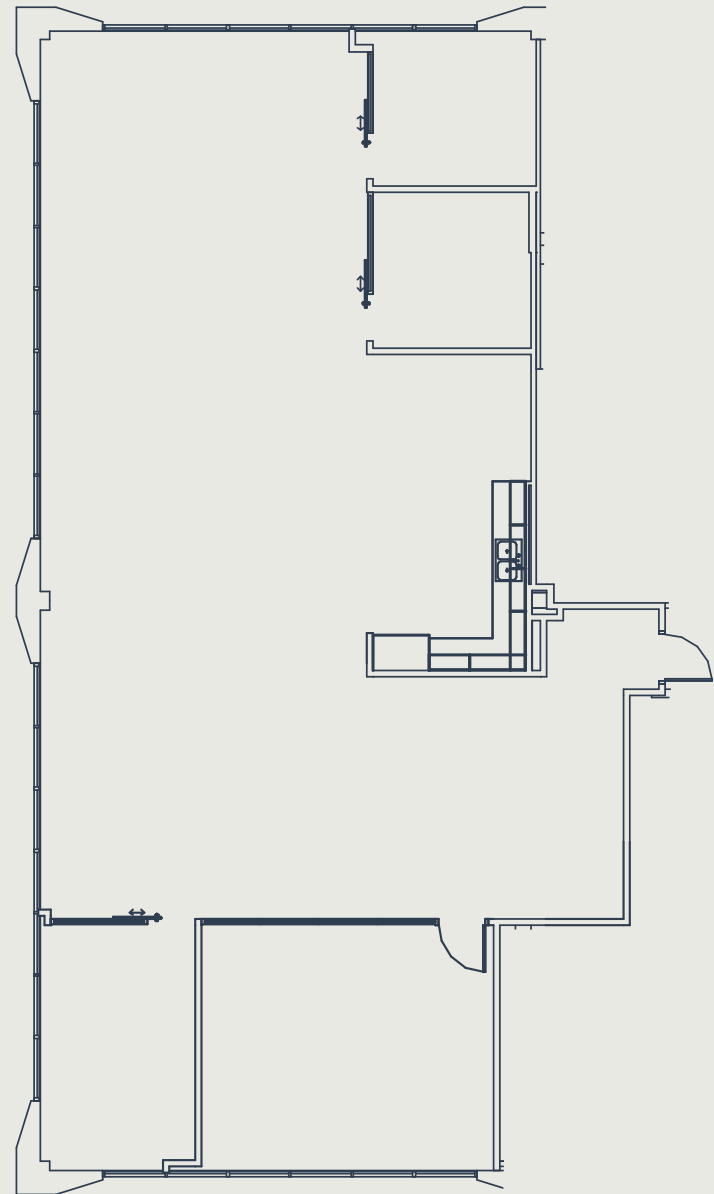
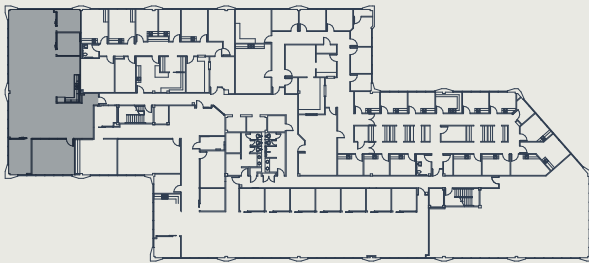
AVAILABILITY DATE

Available Now

▶ LEVEL 3

LEVEL 2

LEVEL 1





AVAILABILITY

Park North II, Suite 325

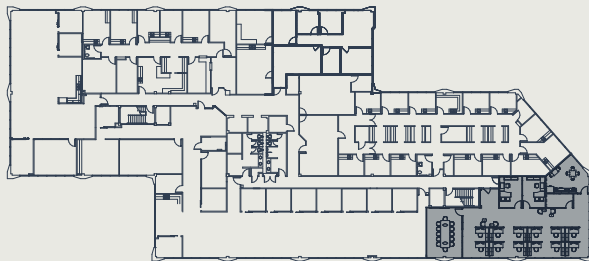
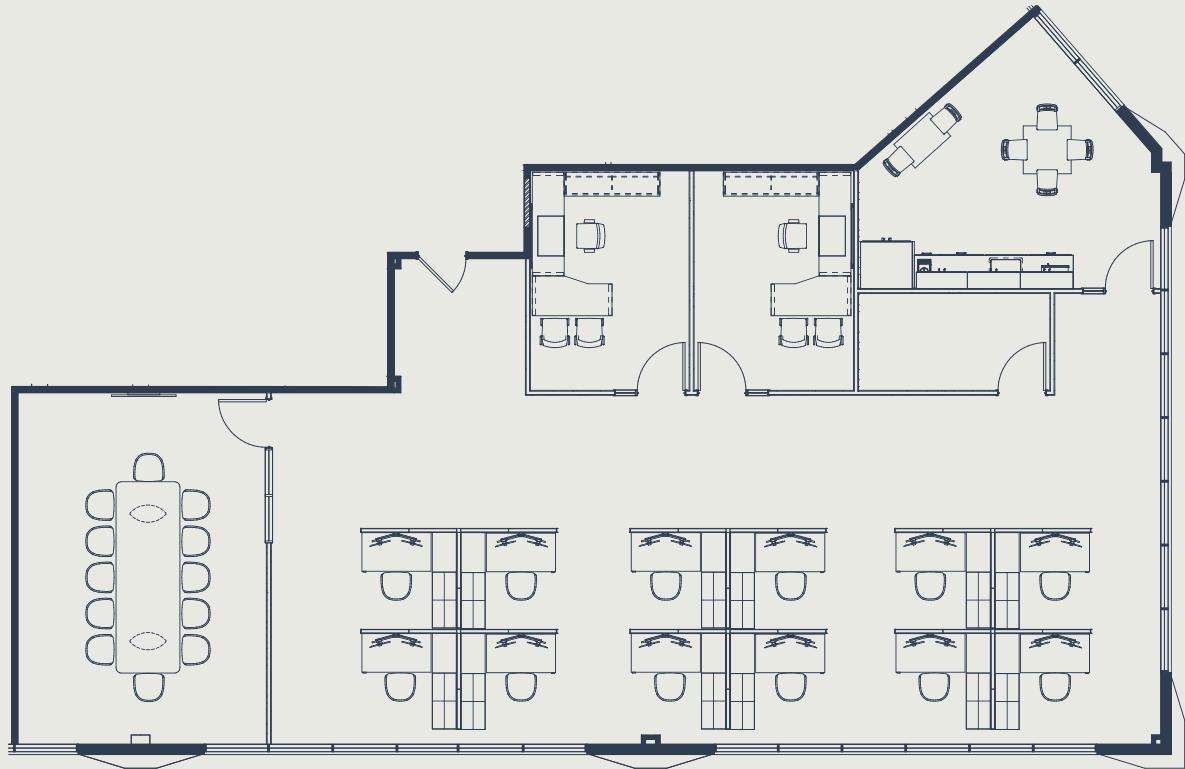
SIZE

2,392 sf

AVAILABILITY DATE

Available Now

- ▶ LEVEL 3
- LEVEL 2
- LEVEL 1





LEASING INFORMATION

Park North I & II is locally owned and operated by OakPoint, a vertically integrated firm with a diverse portfolio in commercial, multifamily, office, residential, and industrial real estate.

For leasing information, please contact:

RYAN BUSCHA

Director

O (512) 975-2253

E rbuscha@oakpointre.com

DAN FRICKS

Leasing

O (512) 640-6278

E dfricks@oakpointre.com

