

Former Prisons For Sale (SOLD SEPARATELY)

Located in Renaissance Park (Formerly Central State Hospital Campus)

Milledgeville, GA 31061



Summary

Area Info

Photos

Surveys

Aerial

Site Map



RIVERS STATE PRISON PRICE: \$349,000

CALL AGENT FOR SCOTT STATE PRISON PRICING INFORMATION

CONTACT

Patty Burns, CCIM, ALC
478-746-9421 Office
478-951-5100 Cell
patty@fickling.com

Trip Wilhoit, CCIM, ALC
478-746-9421 Office
478-960-4080 Cell
trip@fickling.com



577 Mulberry St, Suite 1100
Macon, GA 31201
478.746.9421 Office
<https://commercial.fickling.com>

Former Prisons For Sale (SOLD SEPARATELY)

Located in Renaissance Park (Formerly Central State Hospital Campus)

Milledgeville, GA 31061



Summary

Area Info

Photos

Surveys

Aerial

Site Map

Rivers Prison

Rivers Prison complex consists of three main buildings. One building is 4 floors, the remaining two are 3 floors. Total square footage across all three buildings is 212,300 SF. All utilities available to all buildings.



Scott State Prison (Can be divided & Buildings Sold Separately)

Scott State Prison complex consists of three buildings. The Kemper building is 59,436 SF over 2 floors, the Ingram building is 96,360 SF over 3 floors, and the Holly building is 147,896 SF over 3 floors. All utilities available to all buildings. (Can be divided & Buildings Sold Separately)



CONTACT

Patty Burns, CCIM, ALC
478-746-9421 Office
478-951-5100 Cell
patty@fickling.com

Trip Wilhoit, CCIM, ALC
478-746-9421 Office
478-960-4080 Cell
trip@fickling.com



577 Mulberry St, Suite 1100
Macon, GA 31201
478.746.9421 Office
<https://commercial.fickling.com>

Former Prisons For Sale (SOLD SEPARATELY)

Located in Renaissance Park (Formerly Central State Hospital Campus)

Milledgeville, GA 31061



Summary

Area Info

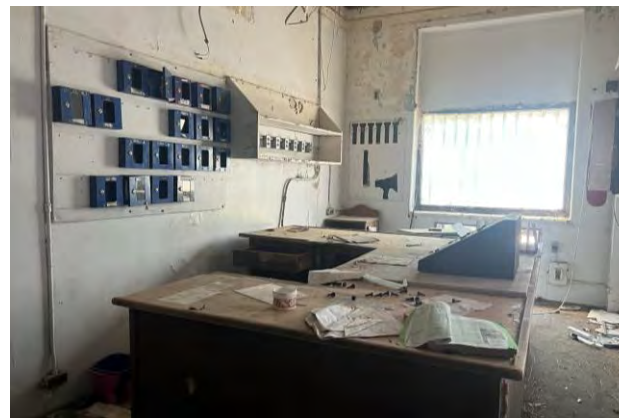
Photos

Surveys

Aerial

Site Map

RIVERS STATE PRISON



CONTACT

Patty Burns, CCIM, ALC
478-746-9421 Office
478-951-5100 Cell
patty@fickling.com

Trip Wilhoit, CCIM, ALC
478-746-9421 Office
478-960-4080 Cell
trip@fickling.com



577 Mulberry St, Suite 1100
Macon, GA 31201
478.746.9421 Office
<https://commercial.fickling.com>

Former Prisons For Sale (SOLD SEPARATELY)

Located in Renaissance Park (Formerly Central State Hospital Campus)

Milledgeville, GA 31061



Summary

Area Info

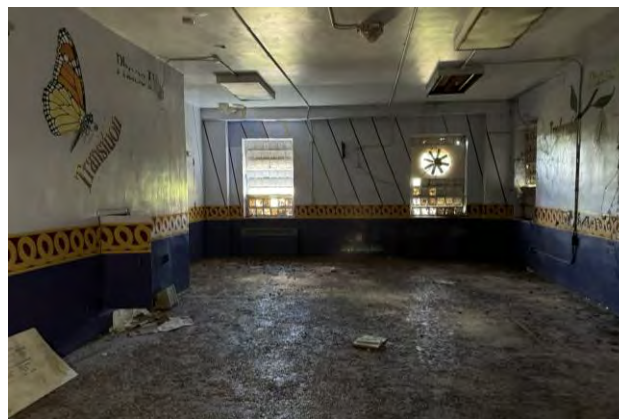
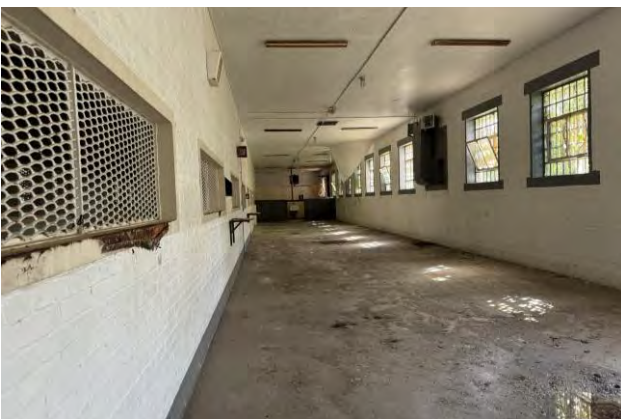
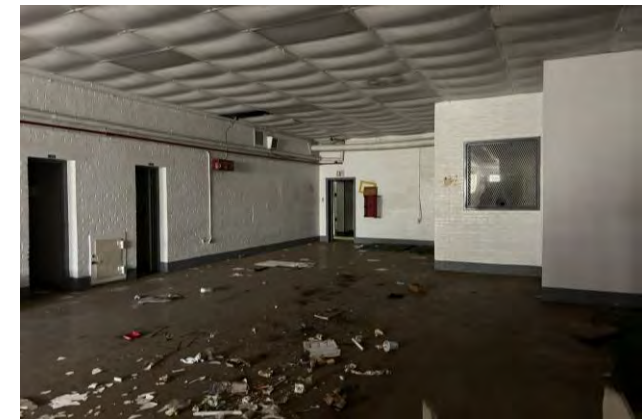
Photos

Surveys

Aerial

Site Map

SCOTT STATE PRISON (Can be divided & Buildings Sold Separately)



CONTACT

Patty Burns, CCIM, ALC
478-746-9421 Office
478-951-5100 Cell
patty@fickling.com

Trip Wilhoit, CCIM, ALC
478-746-9421 Office
478-960-4080 Cell
trip@fickling.com



577 Mulberry St, Suite 1100
Macon, GA 31201
478.746.9421 Office
<https://commercial.fickling.com>

Former Prisons For Sale (SOLD SEPARATELY)

Located in Renaissance Park (Formerly Central State Hospital Campus)

Milledgeville, GA 31061



Summary

Area Info

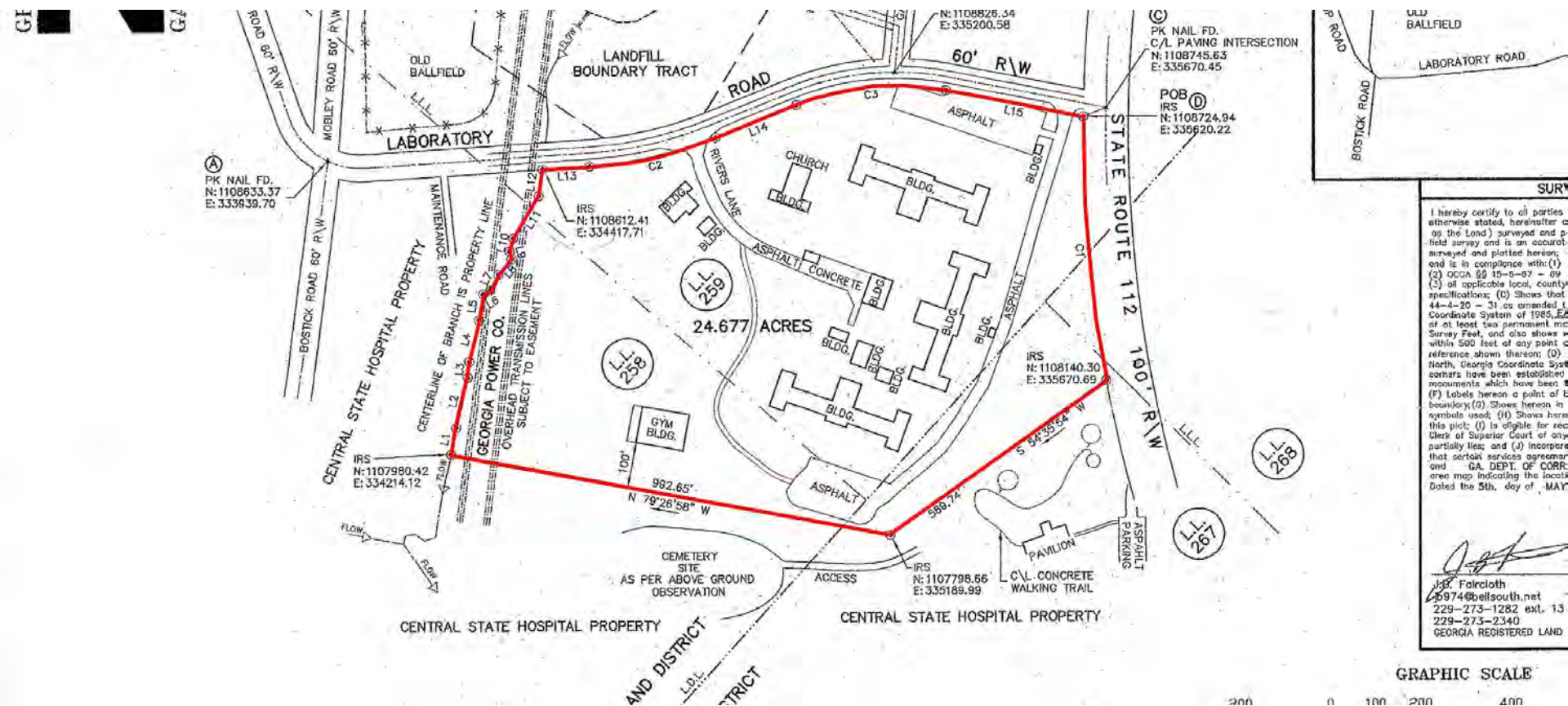
Photos

Surveys

Aerial

Site Map

RIVERS STATE PRISON



SURVEY

I hereby certify to all parties otherwise stated, hereinafter called as the Land, surveyed and plotted hereon, and is in compliance with (1) (2) (3) (4) (5) (6) (7) (8) (9) (10) (11) (12) (13) (14) (15) (16) (17) (18) (19) (20) (21) (22) (23) (24) (25) (26) (27) (28) (29) (30) (31) (32) (33) (34) (35) (36) (37) (38) (39) (40) (41) (42) (43) (44) (45) (46) (47) (48) (49) (50) (51) (52) (53) (54) (55) (56) (57) (58) (59) (60) (61) (62) (63) (64) (65) (66) (67) (68) (69) (70) (71) (72) (73) (74) (75) (76) (77) (78) (79) (80) (81) (82) (83) (84) (85) (86) (87) (88) (89) (90) (91) (92) (93) (94) (95) (96) (97) (98) (99) (100) (101) (102) (103) (104) (105) (106) (107) (108) (109) (110) (111) (112) (113) (114) (115) (116) (117) (118) (119) (120) (121) (122) (123) (124) (125) (126) (127) (128) (129) (130) (131) (132) (133) (134) (135) (136) (137) (138) (139) (140) (141) (142) (143) (144) (145) (146) (147) (148) (149) (150) (151) (152) (153) (154) (155) (156) (157) (158) (159) (160) (161) (162) (163) (164) (165) (166) (167) (168) (169) (170) (171) (172) (173) (174) (175) (176) (177) (178) (179) (180) (181) (182) (183) (184) (185) (186) (187) (188) (189) (190) (191) (192) (193) (194) (195) (196) (197) (198) (199) (200) (201) (202) (203) (204) (205) (206) (207) (208) (209) (210) (211) (212) (213) (214) (215) (216) (217) (218) (219) (220) (221) (222) (223) (224) (225) (226) (227) (228) (229) (230) (231) (232) (233) (234) (235) (236) (237) (238) (239) (240) (241) (242) (243) (244) (245) (246) (247) (248) (249) (250) (251) (252) (253) (254) (255) (256) (257) (258) (259) (260) (261) (262) (263) (264) (265) (266) (267) (268) (269) (270) (271) (272) (273) (274) (275) (276) (277) (278) (279) (280) (281) (282) (283) (284) (285) (286) (287) (288) (289) (290) (291) (292) (293) (294) (295) (296) (297) (298) (299) (300) (301) (302) (303) (304) (305) (306) (307) (308) (309) (310) (311) (312) (313) (314) (315) (316) (317) (318) (319) (320) (321) (322) (323) (324) (325) (326) (327) (328) (329) (330) (331) (332) (333) (334) (335) (336) (337) (338) (339) (340) (341) (342) (343) (344) (345) (346) (347) (348) (349) (350) (351) (352) (353) (354) (355) (356) (357) (358) (359) (360) (361) (362) (363) (364) (365) (366) (367) (368) (369) (370) (371) (372) (373) (374) (375) (376) (377) (378) (379) (380) (381) (382) (383) (384) (385) (386) (387) (388) (389) (390) (391) (392) (393) (394) (395) (396) (397) (398) (399) (400) (401) (402) (403) (404) (405) (406) (407) (408) (409) (410) (411) (412) (413) (414) (415) (416) (417) (418) (419) (420) (421) (422) (423) (424) (425) (426) (427) (428) (429) (430) (431) (432) (433) (434) (435) (436) (437) (438) (439) (440) (441) (442) (443) (444) (445) (446) (447) (448) (449) (450) (451) (452) (453) (454) (455) (456) (457) (458) (459) (460) (461) (462) (463) (464) (465) (466) (467) (468) (469) (470) (471) (472) (473) (474) (475) (476) (477) (478) (479) (480) (481) (482) (483) (484) (485) (486) (487) (488) (489) (490) (491) (492) (493) (494) (495) (496) (497) (498) (499) (500) (501) (502) (503) (504) (505) (506) (507) (508) (509) (510) (511) (512) (513) (514) (515) (516) (517) (518) (519) (520) (521) (522) (523) (524) (525) (526) (527) (528) (529) (530) (531) (532) (533) (534) (535) (536) (537) (538) (539) (540) (541) (542) (543) (544) (545) (546) (547) (548) (549) (550) (551) (552) (553) (554) (555) (556) (557) (558) (559) (560) (561) (562) (563) (564) (565) (566) (567) (568) (569) (570) (571) (572) (573) (574) (575) (576) (577) (578) (579) (580) (581) (582) (583) (584) (585) (586) (587) (588) (589) (590) (591) (592) (593) (594) (595) (596) (597) (598) (599) (600) (601) (602) (603) (604) (605) (606) (607) (608) (609) (610) (611) (612) (613) (614) (615) (616) (617) (618) (619) (620) (621) (622) (623) (624) (625) (626) (627) (628) (629) (630) (631) (632) (633) (634) (635) (636) (637) (638) (639) (640) (641) (642) (643) (644) (645) (646) (647) (648) (649) (650) (651) (652) (653) (654) (655) (656) (657) (658) (659) (660) (661) (662) (663) (664) (665) (666) (667) (668) (669) (670) (671) (672) (673) (674) (675) (676) (677) (678) (679) (680) (681) (682) (683) (684) (685) (686) (687) (688) (689) (690) (691) (692) (693) (694) (695) (696) (697) (698) (699) (700) (701) (702) (703) (704) (705) (706) (707) (708) (709) (710) (711) (712) (713) (714) (715) (716) (717) (718) (719) (720) (721) (722) (723) (724) (725) (726) (727) (728) (729) (730) (731) (732) (733) (734) (735) (736) (737) (738) (739) (740) (741) (742) (743) (744) (745) (746) (747) (748) (749) (750) (751) (752) (753) (754) (755) (756) (757) (758) (759) (760) (761) (762) (763) (764) (765) (766) (767) (768) (769) (770) (771) (772) (773) (774) (775) (776) (777) (778) (779) (780) (781) (782) (783) (784) (785) (786) (787) (788) (789) (790) (791) (792) (793) (794) (795) (796) (797) (798) (799) (800) (801) (802) (803) (804) (805) (806) (807) (808) (809) (810) (811) (812) (813) (814) (815) (816) (817) (818) (819) (820) (821) (822) (823) (824) (825) (826) (827) (828) (829) (830) (831) (832) (833) (834) (835) (836) (837) (838) (839) (840) (841) (842) (843) (844) (845) (846) (847) (848) (849) (850) (851) (852) (853) (854) (855) (856) (857) (858) (859) (860) (861) (862) (863) (864) (865) (866) (867) (868) (869) (870) (871) (872) (873) (874) (875) (876) (877) (878) (879) (880) (881) (882) (883) (884) (885) (886) (887) (888) (889) (890) (891) (892) (893) (894) (895) (896) (897) (898) (899) (900) (901) (902) (903) (904) (905) (906) (907) (908) (909) (910) (911) (912) (913) (914) (915) (916) (917) (918) (919) (920) (921) (922) (923) (924) (925) (926) (927) (928) (929) (930) (931) (932) (933) (934) (935) (936) (937) (938) (939) (940) (941) (942) (943) (944) (945) (946) (947) (948) (949) (950) (951) (952) (953) (954) (955) (956) (957) (958) (959) (960) (961) (962) (963) (964) (965) (966) (967) (968) (969) (970) (971) (972) (973) (974) (975) (976) (977) (978) (979) (980) (981) (982) (983) (984) (985) (986) (987) (988) (989) (990) (991) (992) (993) (994) (995) (996) (997) (998) (999) (1000)

CONTACT

Patty Burns, CCIM, ALC
 478-746-9421 Office
 478-951-5100 Cell
 patty@fickling.com

Trip Wilhoit, CCIM, ALC
 478-746-9421 Office
 478-960-4080 Cell
 trip@fickling.com



577 Mulberry St, Suite 1100
 Macon, GA 31201
 478.746.9421 Office
 https://commercial.fickling.com

Former Prisons For Sale (SOLD SEPARATELY)

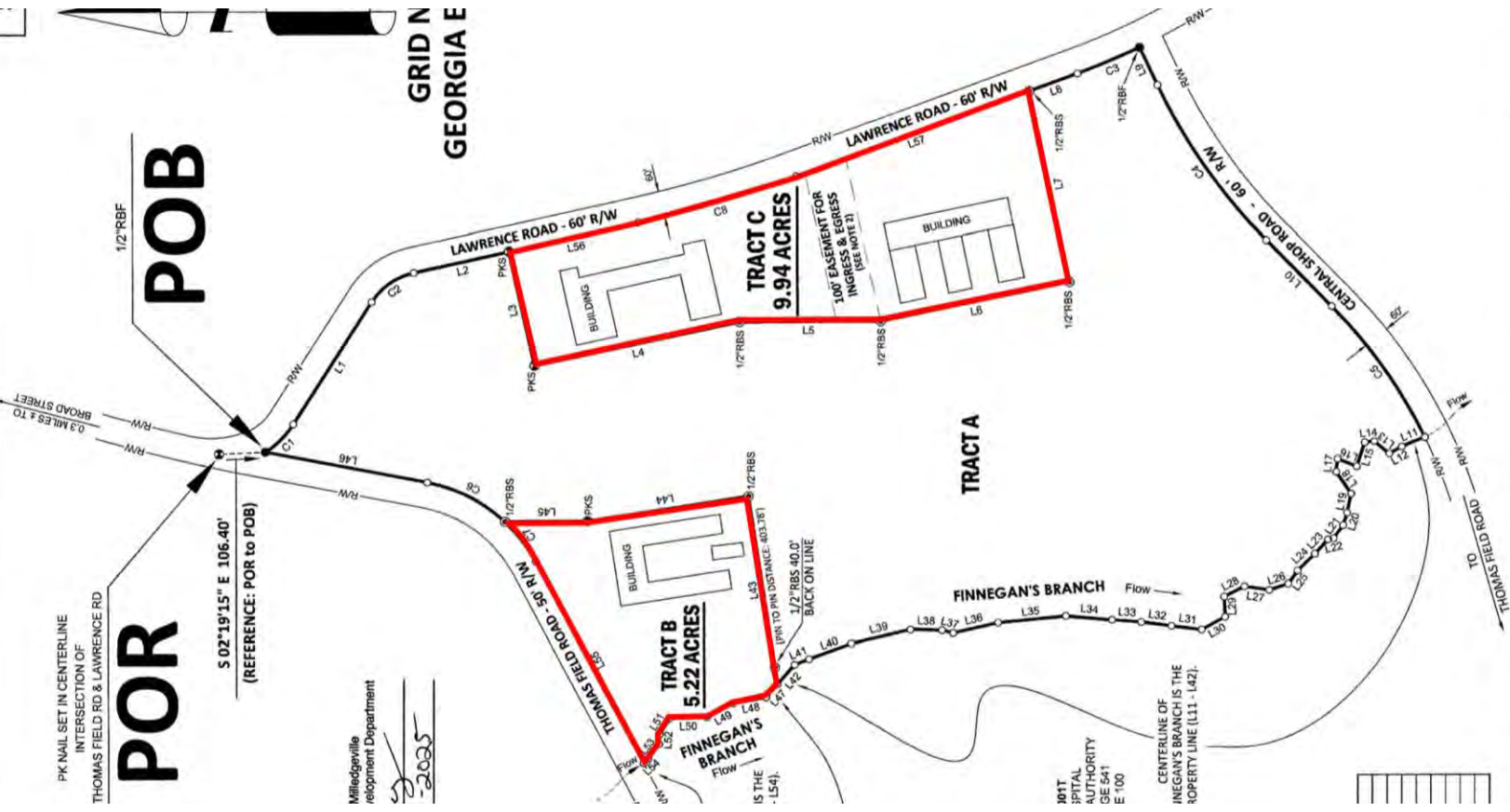
Located in Renaissance Park (Formerly Central State Hospital Campus)

Milledgeville, GA 31061



- Summary
- Area Info
- Photos
- Surveys
- Aerial
- Site Map

SCOTT STATE PRISON



DISCU	LEGEND	GEORGIA SURVEY DATA	GENERAL NOTES
THERE HAS BEEN NO SEARCH FOR EASEMENTS CURRENT AND ACCRUE SUBJECT TO ANY AND UTILITY EASEMENTS TH PLAT NO. 005 THE SL AFFECT THIS PROPERTY	<ul style="list-style-type: none"> COMPUTED POINT REF (UNLESS OTHERWISE NOTED) RBS (UNLESS OTHERWISE FOUND) CONCRETE W/ NUMBER FOUND FIRE HYDRANT OTTY: OPEN TOP PIPE FOUND BS: BUILDING SET BACK LINE FC: FENCE LINE POB: POINT OF BEGINNING OVERHEAD POWER LINE REBAR SET C/L: CENTERLINE P/L: PROPERTY LINE 	<ul style="list-style-type: none"> A. SURVEY DATE: JANUARY & FEBRUARY 2025 B. PLAT DATE: FEBRUARY 22, 2025 C. RECEIVER & CARLSON BRX7 BASE, DUAL FREQUENCY & RTK 	<ul style="list-style-type: none"> LAND LOTS ARE APPROXIMATE 100' EASEMENT IS FOR 24 MONTHS AFTER CLOSING DATE.
	<ul style="list-style-type: none"> SCALE 0 100 200 	<p>MAP 072, PARCEL 001 DIVISION SURVEY PREPARED FOR</p> <p>T.S. Smith Development Company</p> <p>LYING IN LAND LOT 258 1ST LAND DISTRICT 32141 GMD CITY OF MILLEDGEVILLE BALDWIN COUNTY, GEORGIA</p>	<p>DEED BOOK 1504, PAGE 447 PLAT BOOK 42, PAGE 100</p>

CONTACT

Patty Burns, CCIM, ALC
478-746-9421 Office
478-951-5100 Cell
patty@fickling.com

Trip Wilhoit, CCIM, ALC
478-746-9421 Office
478-960-4080 Cell
trip@fickling.com



577 Mulberry St, Suite 1100
Macon, GA 31201
478.746.9421 Office
<https://commercial.fickling.com>

This information is from resources deemed to be reliable and is subject to change without notice. No warranties or guarantees for accuracy are made by Fickling and Company.

Former Prisons For Sale (SOLD SEPARATELY)

Located in Renaissance Park (Formerly Central State Hospital Campus)

Milledgeville, GA 31061



Summary

Area Info

Photos

Surveys

Aerial

Site Map



CONTACT

Patty Burns, CCIM, ALC
478-746-9421 Office
478-951-5100 Cell
patty@fickling.com

Trip Wilhoit, CCIM, ALC
478-746-9421 Office
478-960-4080 Cell
trip@fickling.com



577 Mulberry St, Suite 1100
Macon, GA 31201
478.746.9421 Office
<https://commercial.fickling.com>

Former Prisons For Sale (SOLD SEPARATELY)

Located in Renaissance Park (Formerly Central State Hospital Campus)

Milledgeville, GA 31061



- Summary
- Area Info
- Photos
- Surveys
- Aerial
- Site Map



LEGEND:

ALLEN	B-3	
ARNALL	B-6	
AUDITORIUM	F-2	
BINION	G-3	
BOLAND	C-2	
BOONE	B-2	
BOSTICK	E-8	
BRANTLEY	F-3	
CENTRAL KITCHEN	F-5	
CENTRAL CHAPEL	E-1	
CHAPEL #2	E-10	
CHAPEL #3	B-7	
CHAPEL #4	B-3	
CHAPEL #5	C-1	
COOK	A-11	
CRITTENDEN	D-2	
CSH LAUNDRY	E-5	
CSH MUSEUM	F-3	
DENTAL CLINIC	C-3	
EWAC	B-12	
FIRE STATION	C-6	
FIRE TRAINING/POLICE	F-4	
FREEMAN	B-7	
GDC LAUNDRY	E-6	
GREEN	E-2	
GREENHOUSE	C-5	
HOLLY	F-8	
HOWELL	D-8	
INGRAM	F-7	
JONES	F-2	
KEMPER	G-7	
KIDD	A-11	
LAWRENCE	G-5	
MARY BROWN PAVILION	C-8	
NURSING HOME CENTER	E-6	
POST OFFICE	E-5	
POWELL	E-3	
POWELL ACTIVITY BLDG	F-4	
RIVERS	C-7	
RUSSELL	B-5	
STAFF DORMS & APTS	F-4	
VINSON	B-4	
WALKER	E-2	
WASHINGTON	D-10	
WHEELER	C-4	
WILKES	F-6	
WOOD	B-4	
YARBROUGH	E-5	

KEY:

	GA DEPT OF CORRECTIONS (GDC)
	GA DEPT OF VETERANS SERVICES
	RENAISSANCE PARK

RENAISSANCE PARK
MILLEDGEVILLE, GA 31062

CONTACT

Patty Burns, CCIM, ALC
478-746-9421 Office
478-951-5100 Cell
patty@fickling.com

Trip Wilhoit, CCIM, ALC
478-746-9421 Office
478-960-4080 Cell
trip@fickling.com



577 Mulberry St, Suite 1100
Macon, GA 31201
478.746.9421 Office
<https://commercial.fickling.com>

This information is from resources deemed to be reliable and is subject to change without notice. No warranties or guarantees for accuracy are made by Fickling and Company.