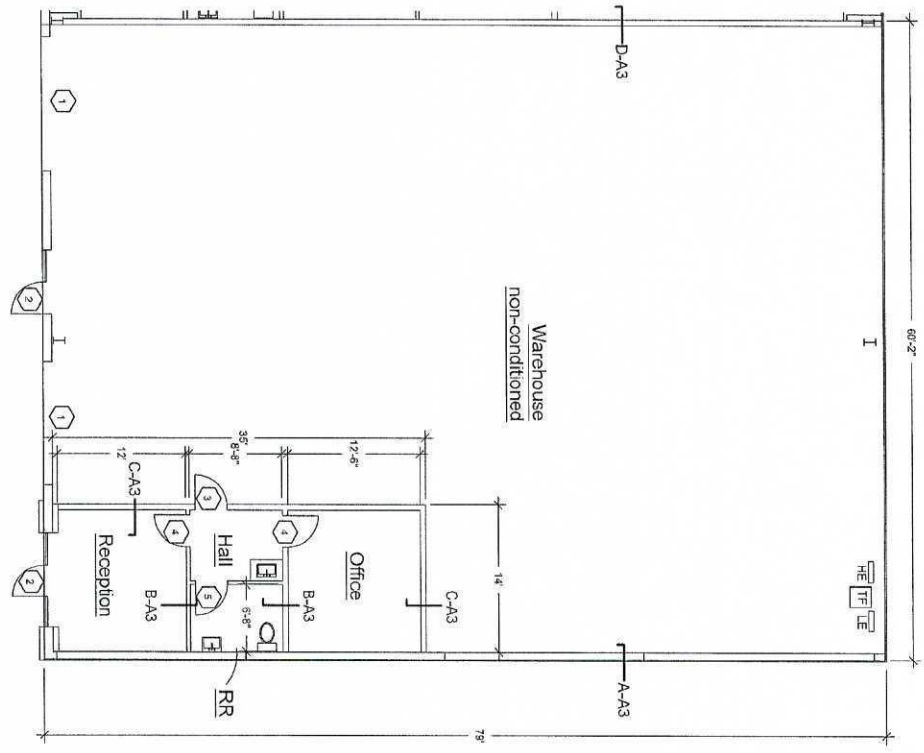
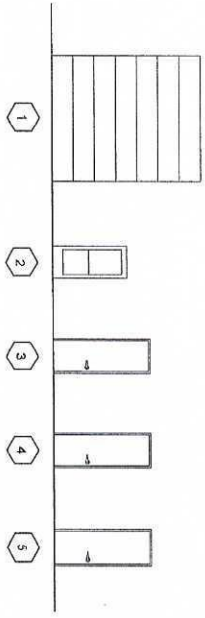



"Exhibit B"

#	Size	Material / Finish	Door Panel / Finish	Frame / Hardware
1	1'-2" x 4'-4"	24 ga Steel / Factory	1/2" Glass / Factory	Structural Insulating Composite Door with Chair Height Operation
2	3'-0" x 7'-2"	Aluminum / Bronze	1/2" Glass / Bronze	Insulated SBC Glass - 1 1/2" Bar Height, 30ga. Lock Outside
3	3'-0" x 8'-2"	Aluminum / Bronze	Solid Core Laminated	Insulated Door, Finishes Level Lock Set, 17ga. Bar Height, 30ga. Bar Finish
4	3'-0" x 8'-2"	Aluminum / Bronze	Solid Core Laminated	Entrance Level Lock Set, 17ga. Bar Height, 30ga. Bar Finish
5	3'-0" x 8'-2"	Aluminum / Bronze	Solid Core Laminated	Privacy Level Lock Set, 17ga. Bar Height, 30ga. Bar Finish



5/25/22
FLOOR PLAN
 SCALE: 1/8" = 1'-0"

Revisions Detail Overall Drawing	Project Name: Snook Business Park 23406 Snook Lane - Ste. E Tomball, Texas 77375	General Contractor:  Braband Building Systems Ltd. 6535 Jackzabill Rd, Ste. B Houston, Texas 77095 www.brabandbuilding.com 713-469-5200	Owner Name: Snook Lane Rentals, LLC 7457 Hollister Road Houston, Texas 77040
	Scale 1/8" = 1'-0" Sheet # A1.1		