

MIDTOWN MEDICAL PLAZA SUBLEASE

2004 HAYES STREET, SUITE 710 | NASHVILLE, 37203



1,966 SF Turn-Key Medical | Office with 5 Ops

NEW SOUTH
COMMERCIAL

JOHN MUDGETT
JOHNMUDGETT@NEWSOUTHCRE.COM
615.949.0433

PROPERTY HIGHLIGHTS

BUILDING

Midtown Medical Plaza

ADDRESS

2004 Hayes Street, Suite 710

RENT

\$38.00/SF FSG

SIZE

1,966 SF

TERM

Flexible 1 - 3+ Year Term

CONFIGURATION

5 Exam Rooms and 1 Private Office,
Reception, Admin Workspace,
Kitchenette & Breakroom,
Restroom, Storage





SUBLEASE FEATURES

- **TURN KEY:** Furniture & Fixtures can be included
- **MOVE-IN-READY:** Space can be made available immediately
- **CORNER UNIT:** Offers incredible views of Midtown and great window lines for a small suite
- **FLEXIBLE TERMS:** Sublessor open to considering 1-3 year lease options
- **LEASE INCENTIVES:** 1 Month of Free Rent per year of term*

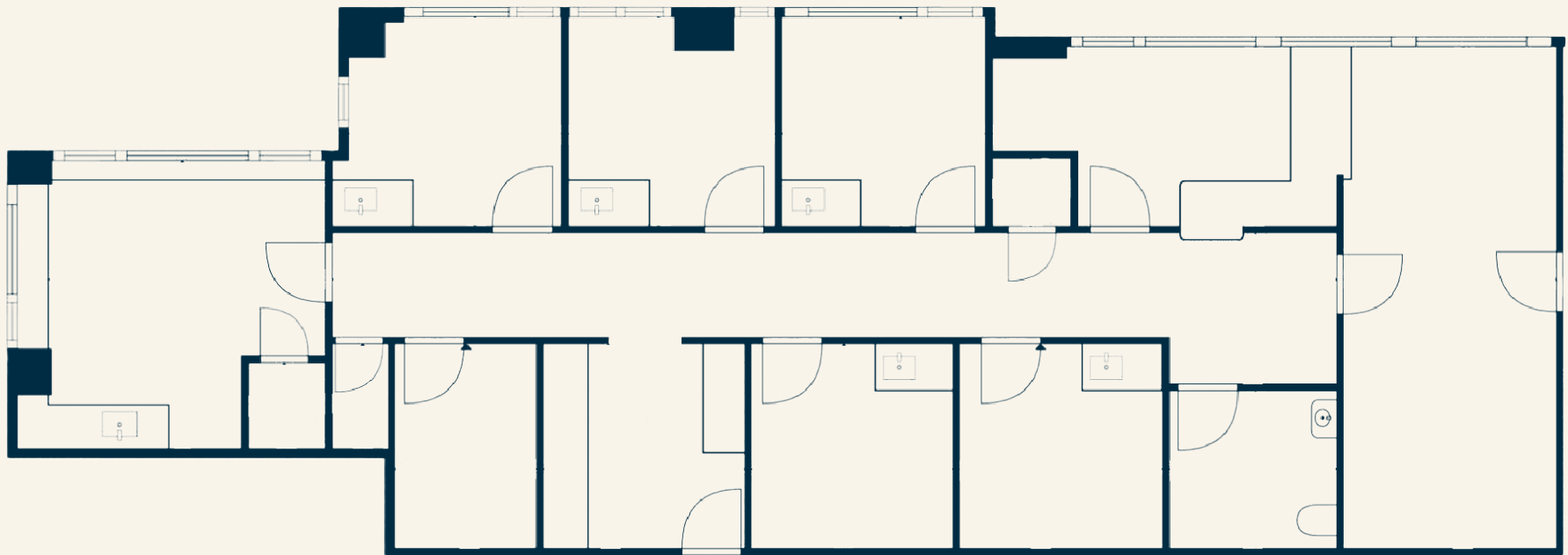


IF LEASE SIGNED BY END OF THE YEAR



FLOOR PLAN

1,966 SF



LOCATION MAP



40

24

DOWNTOWN

40

CHARLOTTE AVE

BROADWAY

MIDTOWN



WEST END AVE

65



JOHN MUDGETT
JOHNMUDGETT@NEWSOUTHCRE.COM
615.949.0433

NEW SOUTH
COMMERCIAL

New South Commercial is a licensed Tennessee Real Estate Broker. All information contained herein has been obtained from sources deemed reliable; however, no warranty or representation, expressed or implied, is made as to the accuracy of the information. Property is offered subject to errors, omissions, change of price, prior sale, or lease, or withdrawal without notice. Prospective tenants or buyers are strongly encouraged to conduct their own independent due diligence, including verification of all property details, zoning, measurements, and suitability for intended use.