

3025 Trotters Parkway Alpharetta, Ga 30004

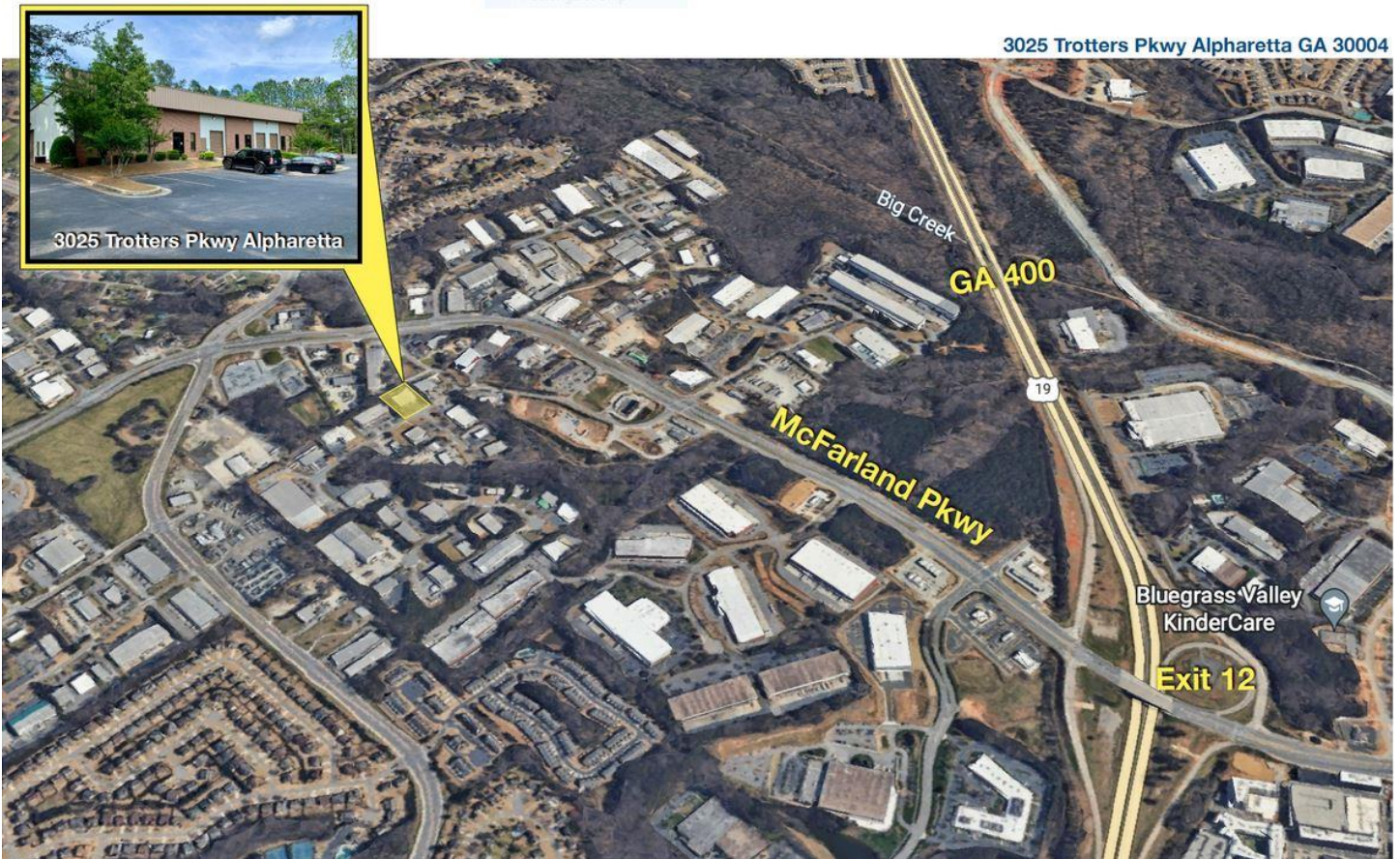


Property Detail

| | | |
|----------------|--|--|
| Property Type: | Flex/ Warehouse | <ul style="list-style-type: none">• 200SF office/storage + 2,800SF Warehouse |
| Size: | 3,000SF | <ul style="list-style-type: none">• Clear Height: 22' |
| Rate: | \$15/SF + NNN | <ul style="list-style-type: none">• Exterior dock door |
| Availability: | Currently available | <ul style="list-style-type: none">• Zoning: M1 (Industrial) |
| Location: | Trotter Pkwy just off McFarland Rd & Ga400 | <ul style="list-style-type: none">• Close to Ga 400, Exit 12 |

Trotters Parkway Industrial Park Space Available

3025 Trotters Parkway Alpharetta, Ga 30004



| SUITE | TENANT | SIZE |
|-------|----------|---------|
| A | OCCUPIED | 6,000SF |
| B | VACANT | 3,000SF |
| C | OCCUPIED | 3,000SF |



DEREK LAWRIE
770.827.4153
derek@hpiinc.net

Trotters Parkway Industrial Park Space Available

3025 Trotters Parkway Alpharetta, Ga 30004

The information contained herein has been obtained through sources deemed reliable but cannot be guaranteed as to its accuracy. Any information of special interest should be obtained through independent verification.

