

FOR SALE



- 3,500± SF professional office building located in the Applegate Professional Center
- Prime location just east of US-19 and SR-50 with excellent accessibility and visibility
- Efficient office flow and circulation design
- High ceilings and attractive professional finishes throughout
- Existing tenant in place through 2/28/2027 providing interim income
- Excellent owner-occupant opportunity with anticipated future availability upon tenant relocation
- Multiple window-lined perimeter offices create a bright and productive work environment
- Designed with the ability to efficiently separate into two independent units

5286 Applegate Dr. | Port Richey, FL 34668

Sale Price: \$699,000 | 3,500 SF Office Condo

Applegate Professional Center

Heidi Tuttle-Beisner, CCIM

Broker/President

Cell: (727) 992-1674

htuttle@cap-realty.com

Office: (727) 376-4900

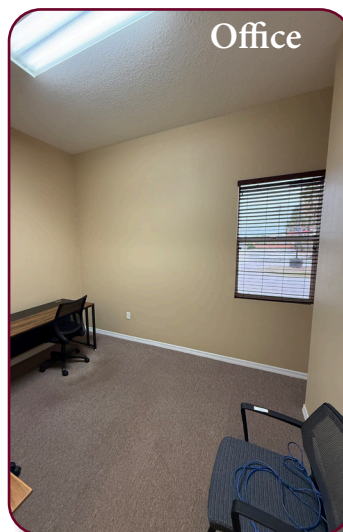
cap-realty.com



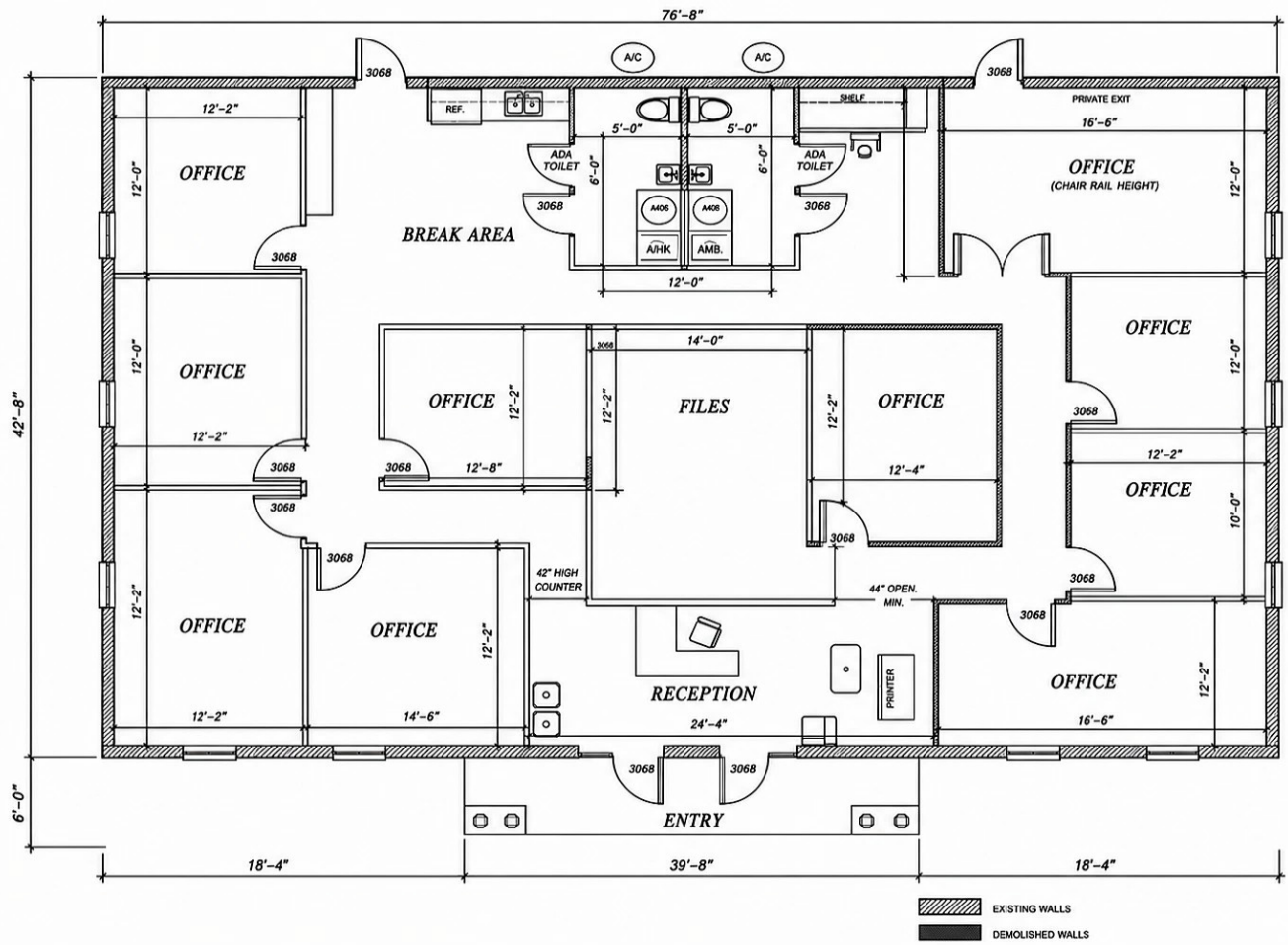
**COMMERCIAL ASSET
PARTNERS**

INTERIOR

PROPERTY FEATURES



FLOOR PLAN | 3,500 SF



Functional floor plan featuring:

- Welcoming reception/lobby
- Multiple private, perimeter offices with windows
- Large conference room
- Spacious breakroom/kitchen
- Dedicated file/storage room

PROPERTY FEATURES



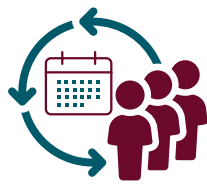


Demographics | 5 Miles



\$76,934

Average HH Income



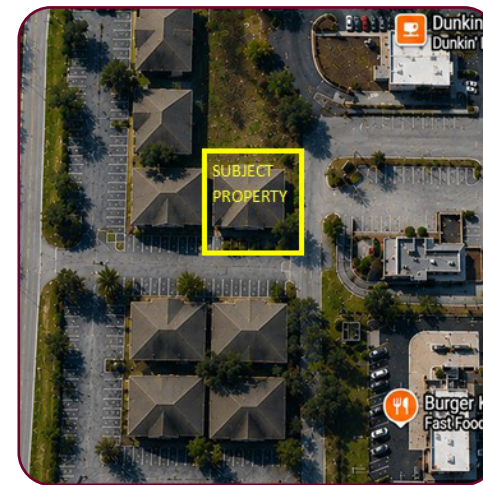
51.3

Median Age



67,172

Population



CAP-Realty.com
(727) 376-4900

Visit us @ www.cap-realty.com
 LinkedIn | Facebook | Instagram
 Follow CAPRealty @ [/commercialassetpartnersrealty/](https://www.instagram.com/commercialassetpartnersrealty/)



COMMERCIAL ASSET
PARTNERS