

AVAILABLE FOR LEASE 12,500 SF WAREHOUSE & OFFICE

COMPETITIVE RATE AVAILABLE



TERM THROUGH SEPTEMBER 2027

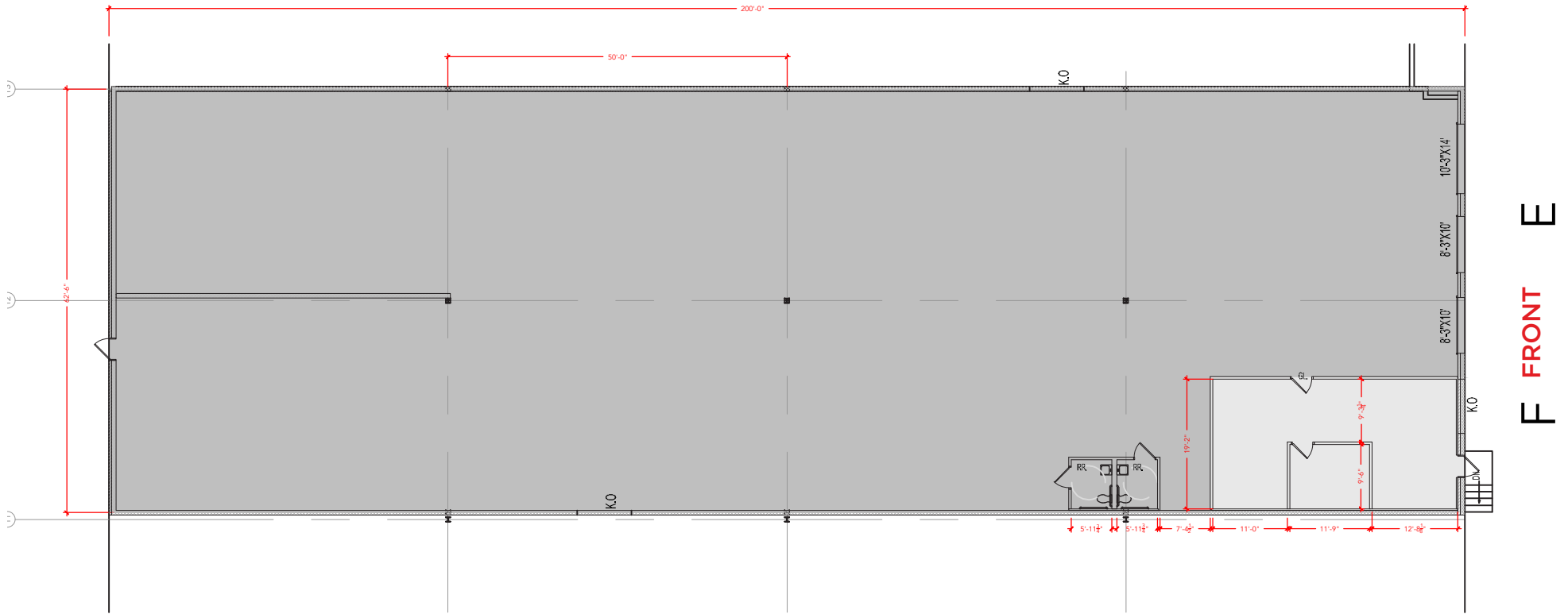


JLL Industrial

Sean Ryan
443 452 1500
sean.ryan1@jll.com

821 Oregon Ave, Suites E-F
Linthicum, MD 21090

floor plan



**TERM
THROUGH
SEPT 2027**

**12,500 SF
TOTAL
AVAILABLE**

**1,200 SF
OFFICE**

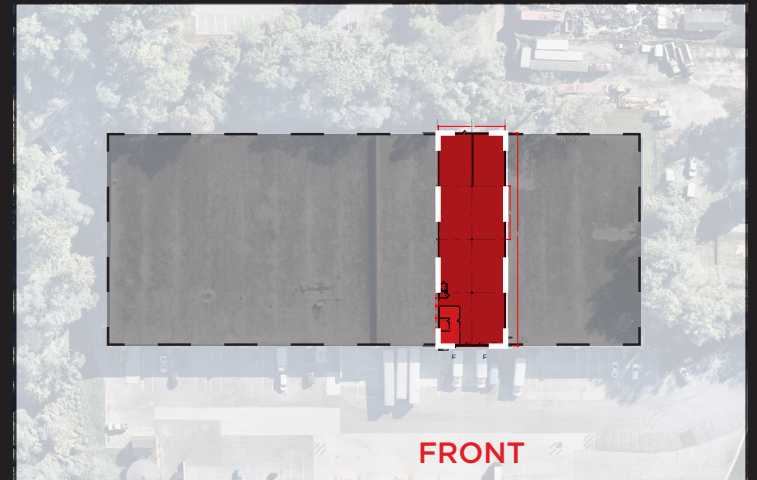
**3
DOCK HIGH
DOORS**

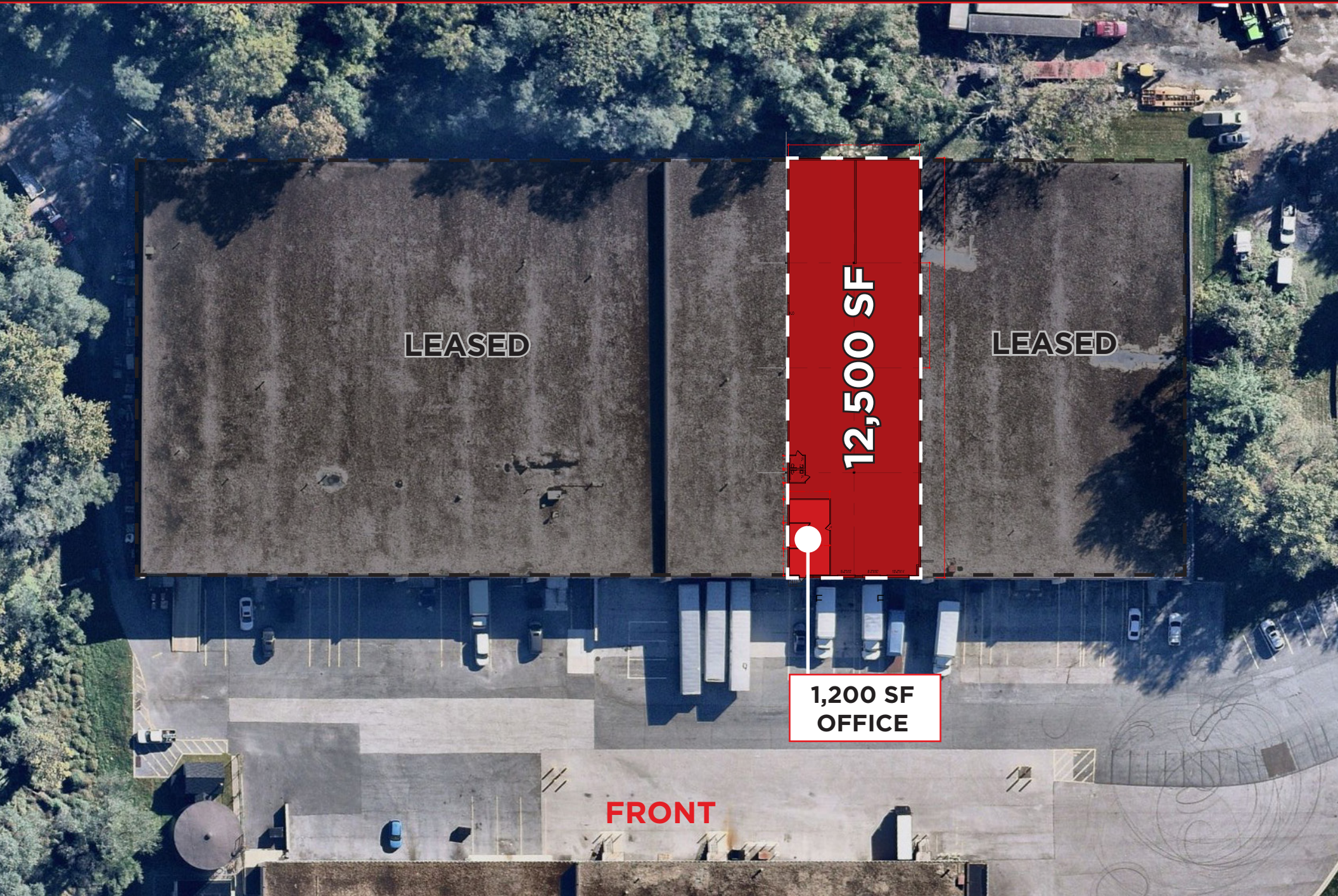
**20 FT
CLEAR
HEIGHT**

**WET
SPRINKLERS**

**PARKING
1.25/1,000 SF**

**SUITES
E-F**





LEASED

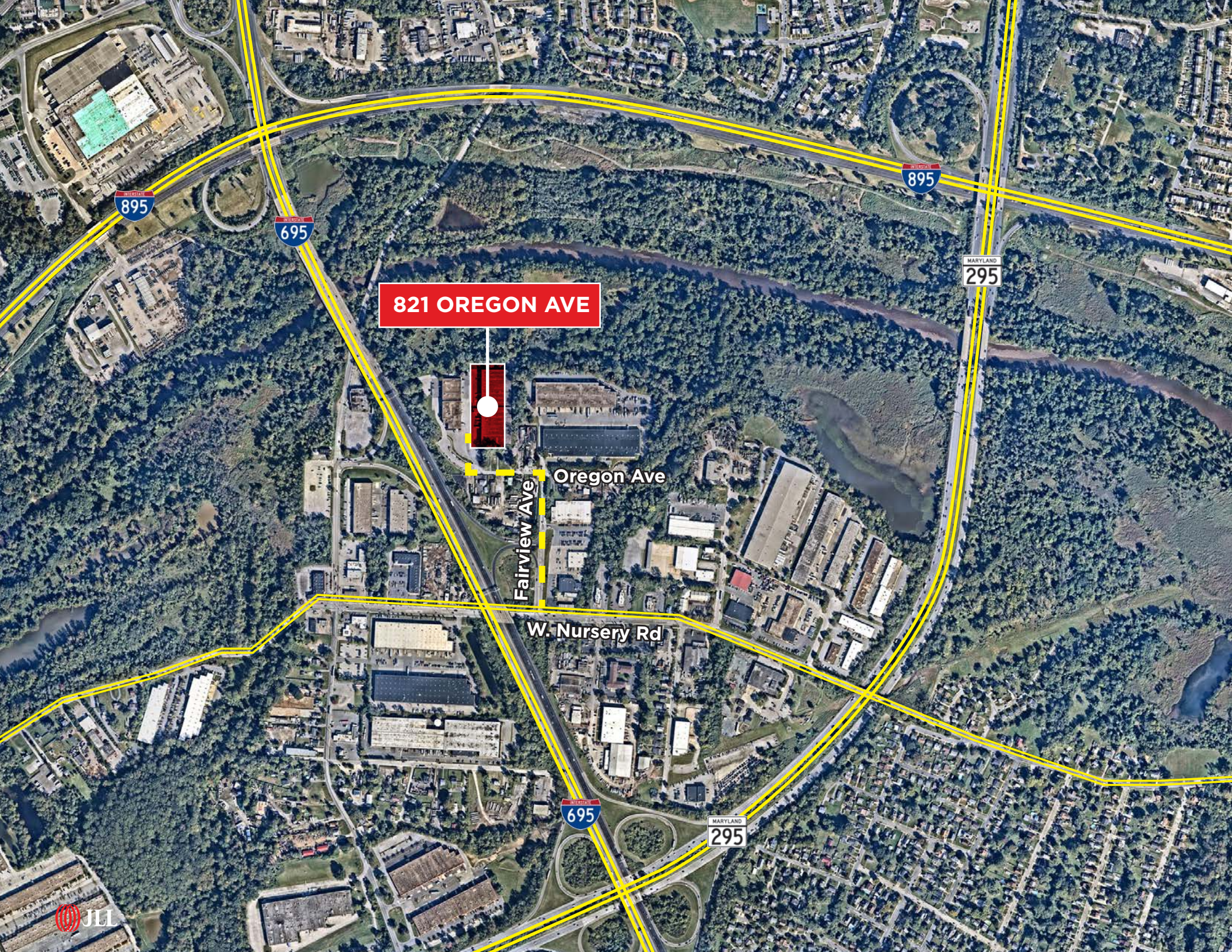
12,500 SF

LEASED

1,200 SF
OFFICE

FRONT





821 OREGON AVE



Fairview Ave

Oregon Ave

W. Nursery Rd

INTERSTATE
895

INTERSTATE
695

INTERSTATE
895

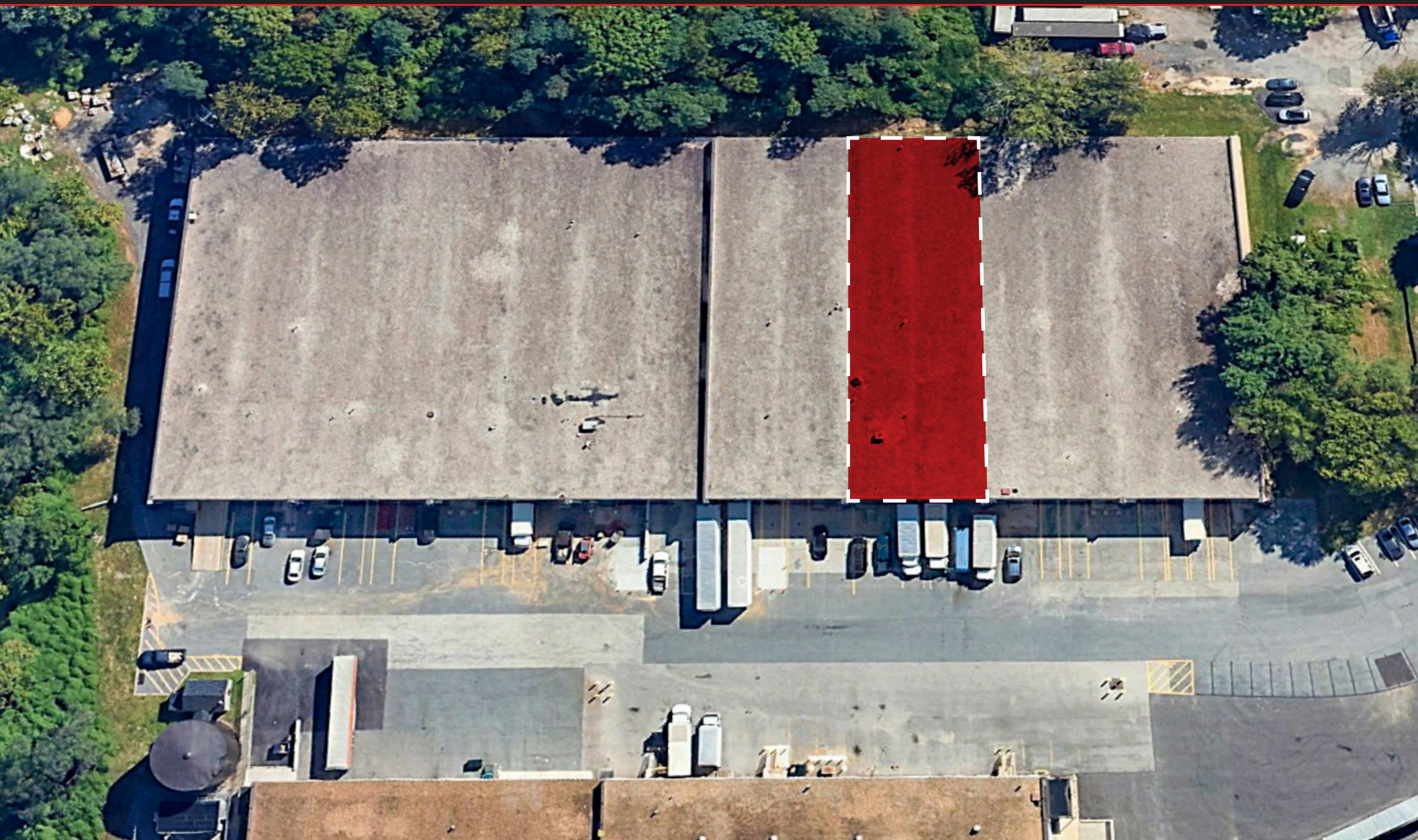
MARYLAND
295

INTERSTATE
695

MARYLAND
295



Although information has been obtained from sources deemed reliable, neither Owner nor JLL makes any guarantees, warranties or representations, express or implied, as to the completeness or accuracy as to the information contained herein. Any projections, opinions, assumptions or estimates used are for example only. There may be differences between projected and actual results, and those differences may be material. The Property may be withdrawn without notice. Neither Owner nor JLL accepts any liability for any loss or damage suffered by any party resulting from reliance on this information. If the recipient of this information has signed a confidentiality agreement regarding this matter, this information is subject to the terms of that agreement. ©2026. Jones Lang LaSalle IP, Inc. All rights reserved.



For more leasing information, please contact:

Sean Ryan
443 452 1500
sean.ryan1@jll.com