

BOONES CREEK RETAIL/OFFICE

129 Boone Ridge Drive
Johnson City, TN 37604

Location

Just off Boones Creek Road in Boones Creek

Available for Lease

Suite 2: 2,500+/- SF office
\$2,950/month gross

Highlights

- Open work area
- Storage with access to a dock/high loading area
- Breakroom/kitchenette
- Shared restrooms
- Home office of Scouting America
- Zoned R-5
- Ample parking
- Approx. 0.4 miles from I-26, exit 17

Traffic Counts

Boones Creek Rd: 18,730 (2025)
I-26 near exit 17: 67,272 (2025)

Demographics

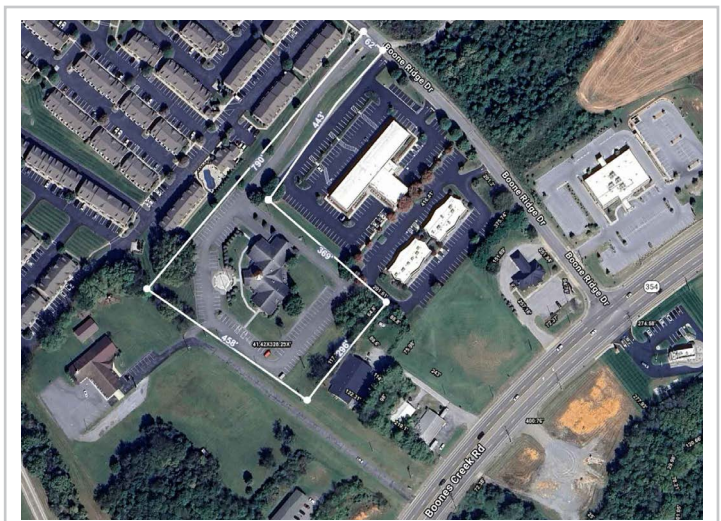
| (2025 Est.) | 3 mile | 5 mile | 10 mile |
|------------------|----------|----------|----------|
| Population | 22,970 | 55,273 | 169,457 |
| Median HH Income | \$83,063 | \$78,364 | \$67,411 |
| Median Age | 43.3 | 44.6 | 41.9 |

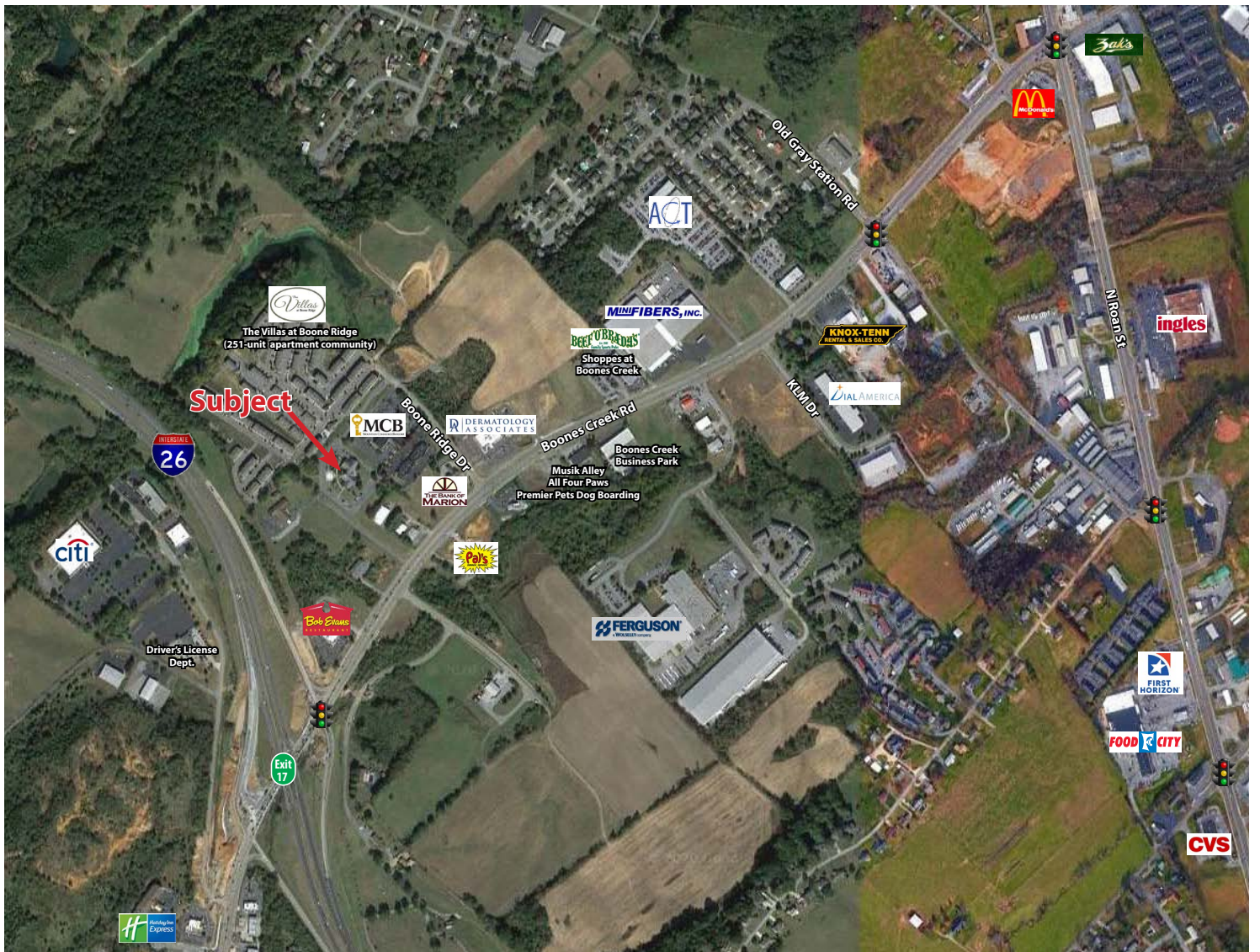
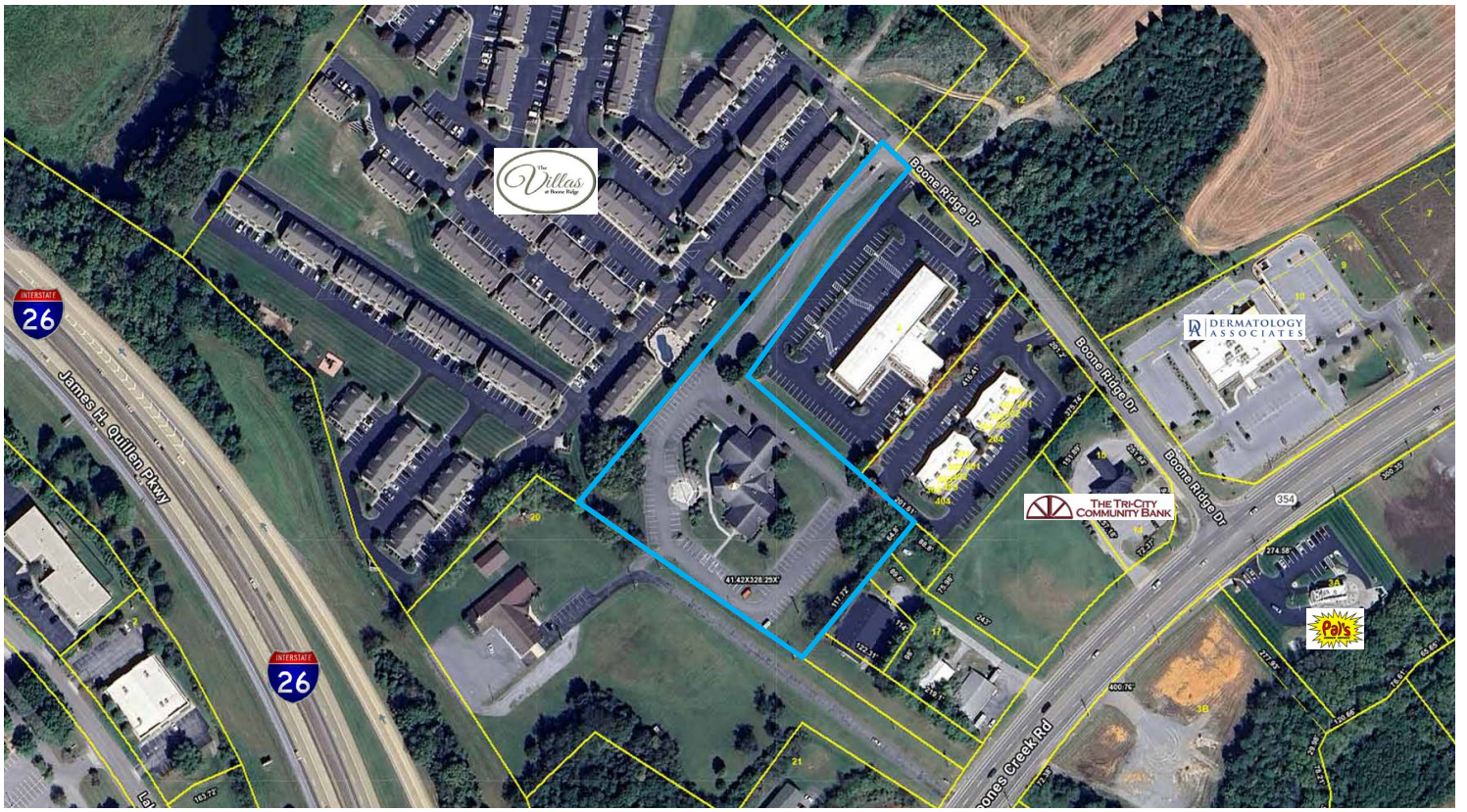
Contact

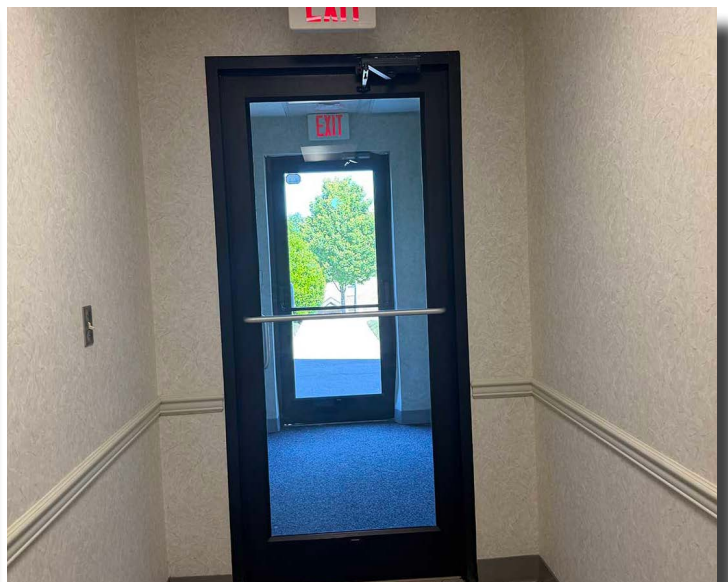
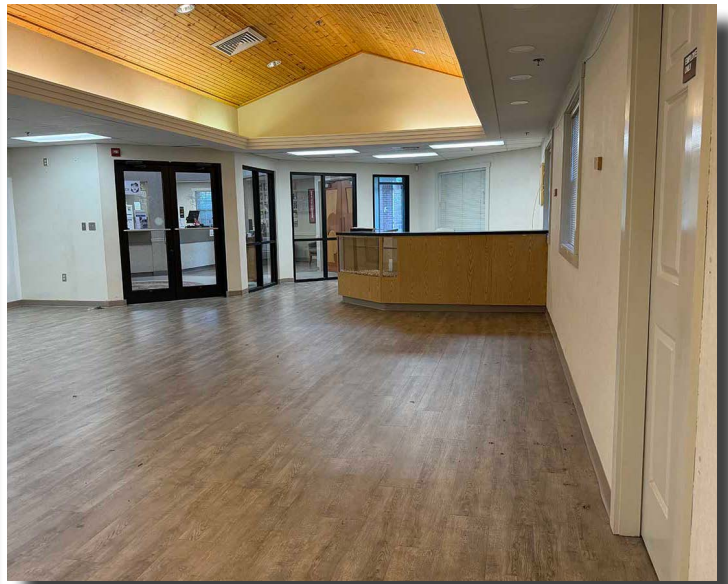
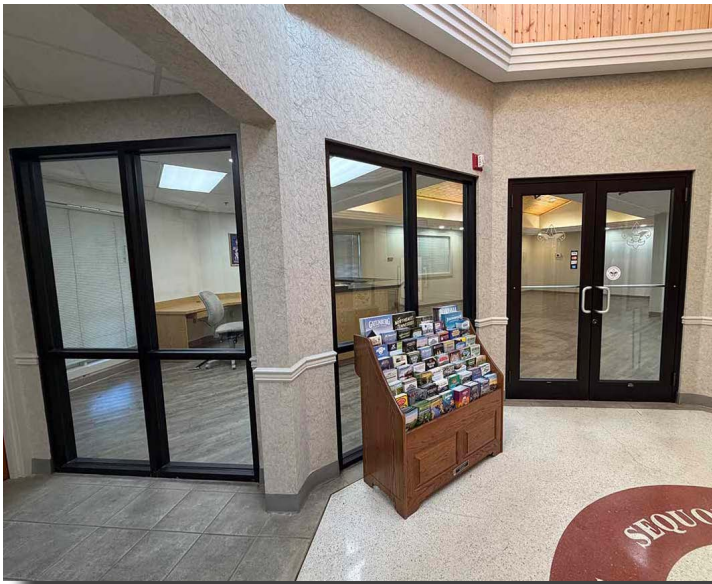
Shannon K. Castillo

Broker
shannon@mitchcox.com

📞 423-282-6582 | 📠 423-282-5903
www.mitchcox.com







MITCH COX
REALTOR, INC.

2304 Silverdale Drive, Suite 200, Johnson City, TN 37601
423-282-6582 (o) 423-282-5903 (f) www.mitchcox.com