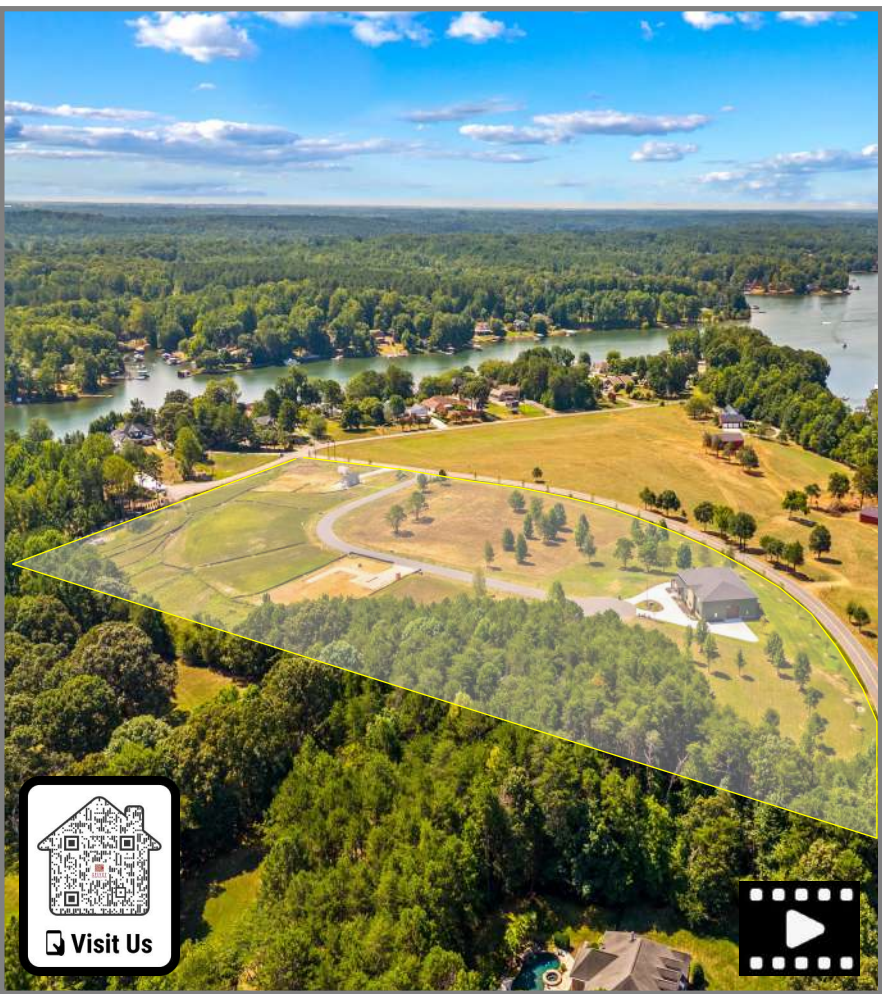


HONEYCUTT FLATS



Visit Us



Honeycutt Flats

Welcome home to Honeycutt Flats, a prestigious Lake Norman community of just 15 Luxury Barndominiums exclusively built by Spivey Construction Company. Featuring fully-customizable layouts designed to fit your family's lifestyle, each one-of-a-kind residence blends unparalleled craftsmanship and comfort with expansive, high-ceiling garage space – perfect for storing your cars, boats, RVs, and more. Conveniently located off Perth Road, just minutes from Lake Norman State Park, Troutman, Mooresville, and I-77, Honeycutt Flats offers a rare opportunity to experience Luxury Barndominium Living at its finest.

Willis I. Spivey	Lewis D. Spivey
Spivey Construction Co., Inc.	Equity Commercial Properties
51 Years 1975 - 2026	Realtor/Broker
704-363-7288	704-363-1401
Willis@SpiveyInc.com	Lspivey@Equitycp.com



HONEYCUTT FLATS

LUXURY BARNDOMINIUM LIVING

Lake Norman State Park - 2 Miles



Town of Troutman - 4 Miles



Honeycutt Flats



I-77 Exit 42 - 6 Miles



The Village at Byers Creek - 8 Miles



HONEYCUTT FLATS

LUXURY BARNDOMINIUM LIVING

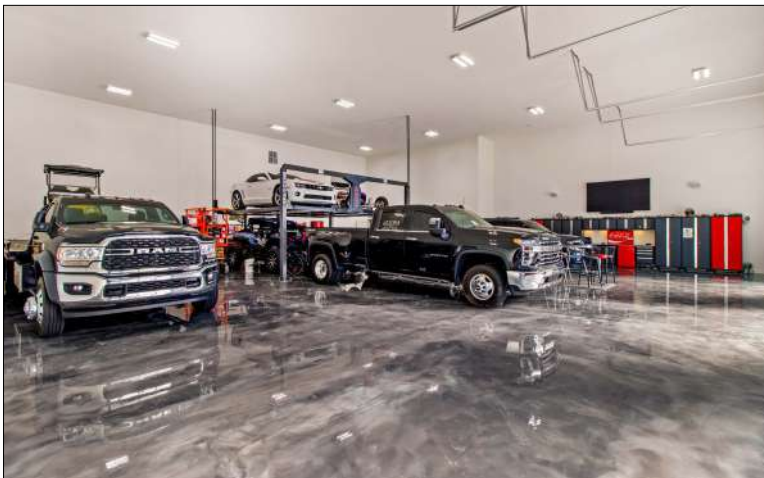
Exterior Photos



HONEYCUTT FLATS

LUXURY BARNDOMINIUM LIVING

Interior Photos



HONEYCUTT FLATS

LUXURY BARNDOMINIUM LIVING

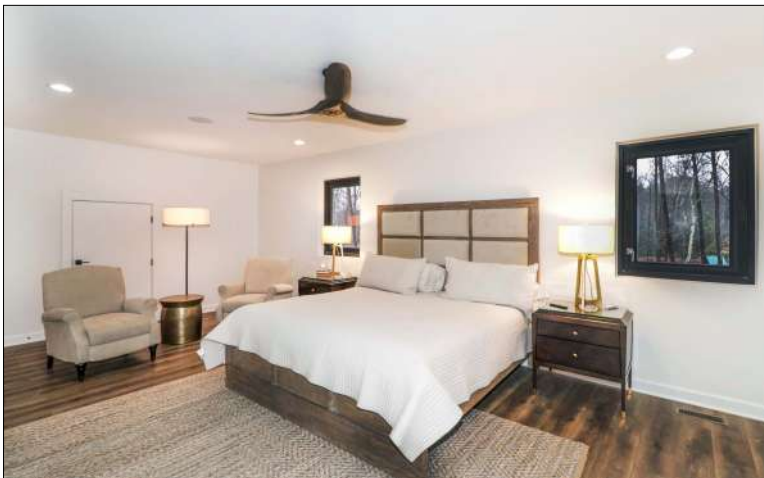
Interior Photos



HONEYCUTT FLATS

LUXURY BARNDOMINIUM LIVING

Interior Photos

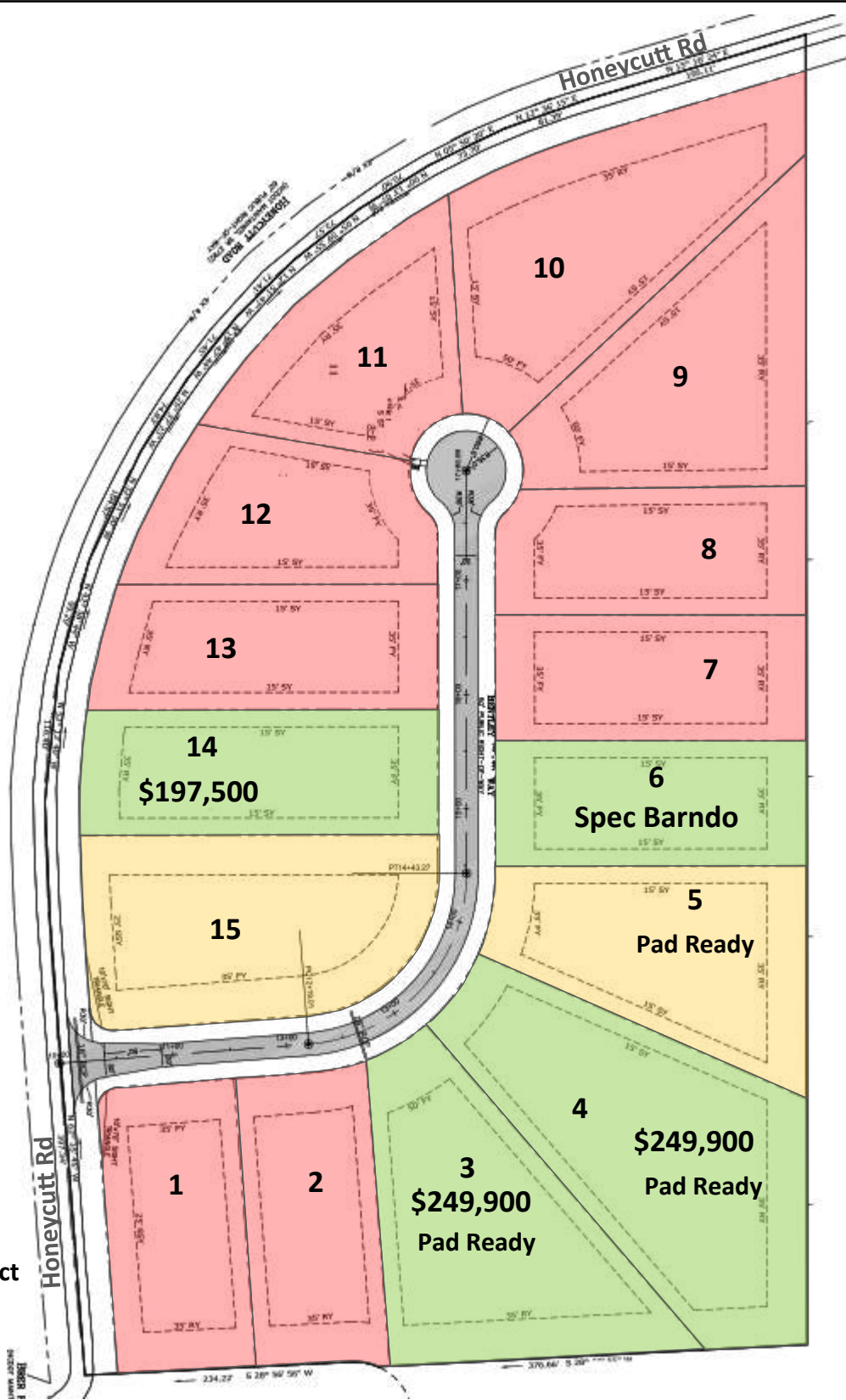


HONEYCUTT FLATS

LUXURY BARNDOMINIUM LIVING

Site Plan & Lot Information—Please Call or Email to Confirm Lot Status

Lot #	Acres
1	0.70
2	0.69
3	1.11
4	1.39
5	0.91
6	0.69
7	0.69
8	0.69
9	0.98
10	1.18
11	0.69
12	0.69
13	0.74
14	0.79
15	1.08

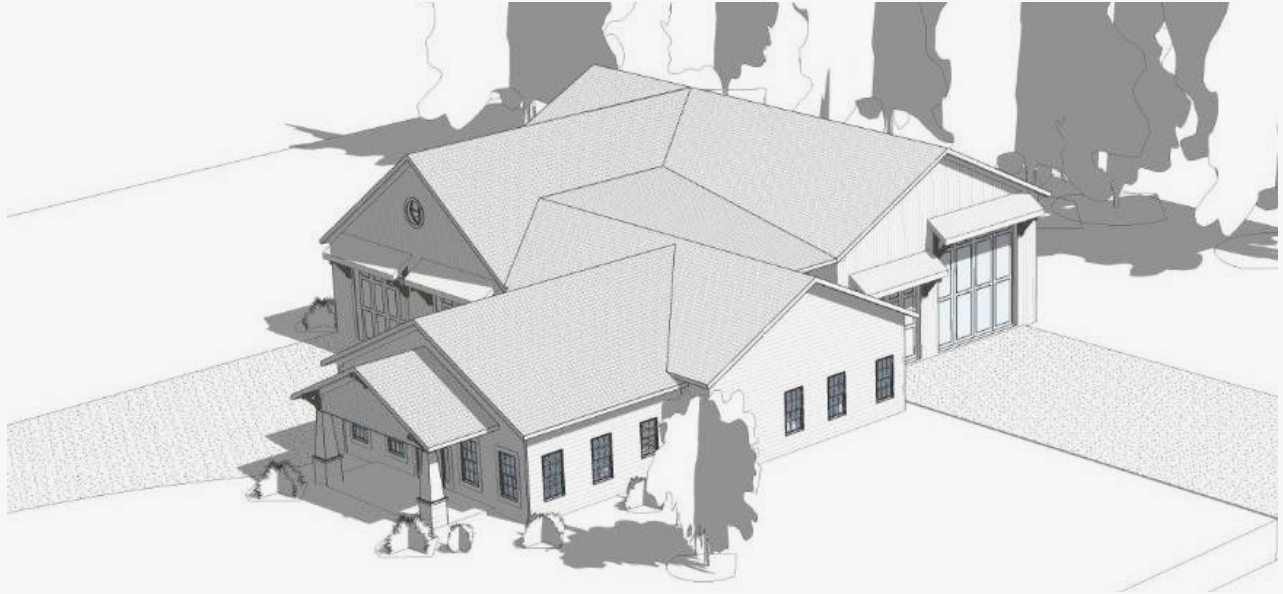


- Available
- Under Contract
- Sold

HONEYCUTT FLATS

LUXURY BARNDOMINIUM LIVING

Customizable Building Examples



HONEYCUTT FLATS

LUXURY BARNDOMINIUM LIVING

Building & Floor Plan Example

