

FREEDOM SQUARE

FREEDOM SQUARE

8375 & 8385 Green Level Church Road, Apex, NC 27523

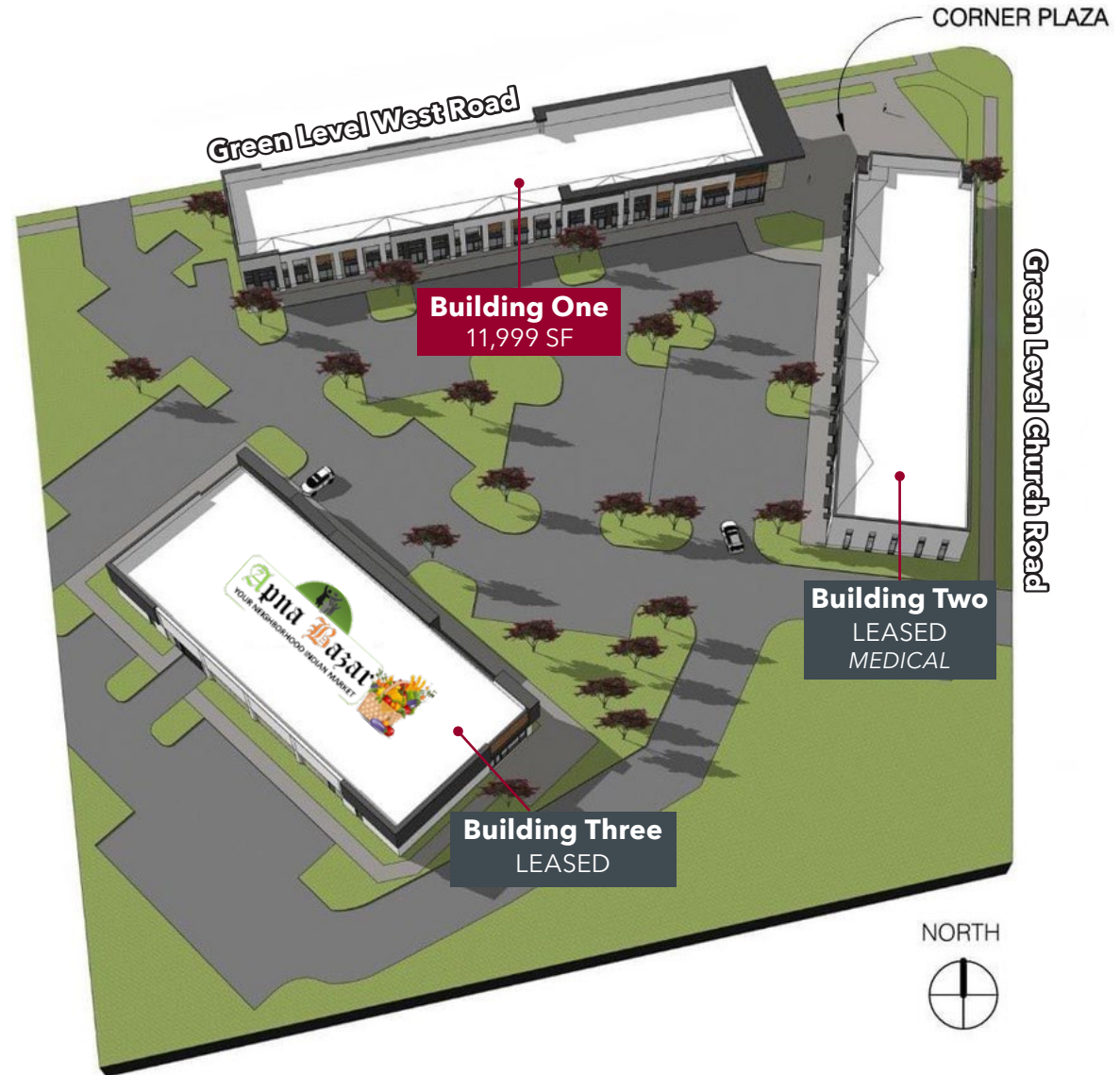
PROPERTY OVERVIEW

Freedom Square is a new multitenant neighborhood retail and office center under construction in Apex. The property is close to NC 540 Hwy with frontage and visibility on both Green Level West Road and Green Level Church Road, located in a affluent and growing submarket of western Wake County.

- » Building 1, Suite 100: ±3,307 SF endcap restaurant space available
- » Endcap space with glass roll up door and outdoor patio seating
- » Shared grease trap in place for Buildings One and Two to accommodate restaurant uses
- » Tenant improvement allowance available
- » Cold dark shell delivery
- » 110 shared parking spaces
- » Hundreds of new homes proposed and under construction nearby
- » Buildings Two and Three are fully leased

LEASE RATE

- » Call broker for pricing



Karah Jennings McConnell
kjennings@lee-associates.com
O: 919.576.2502
C: 919.817.0705

James Bailey, SIOR, J.D.
jbailey@lee-associates.com
O: 919.576.2514
C: 336.602.3022

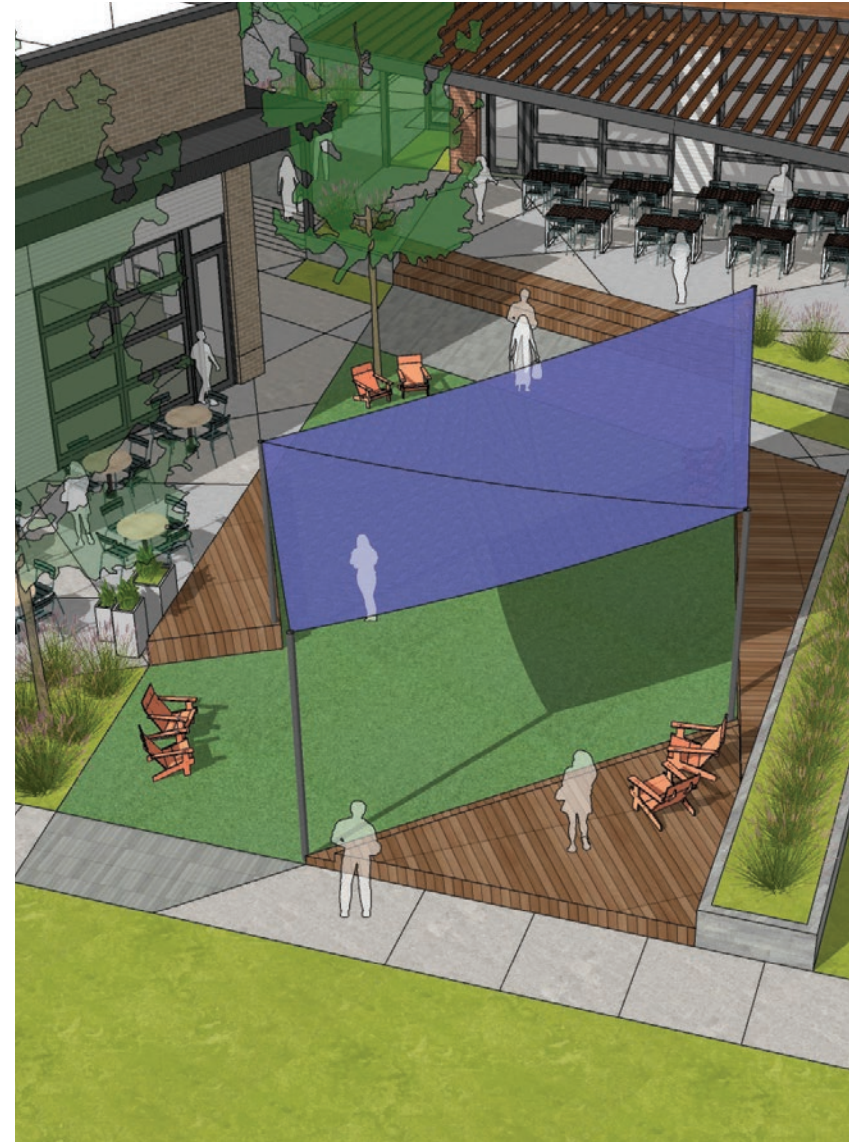
Moss Withers, SIOR, MBA
mwithers@lee-associates.com
O: 919.576.2501

LEE & ASSOCIATES
COMMERCIAL REAL ESTATE SERVICES
RALEIGH • DURHAM • WILMINGTON

FREEDOM SQUARE

FREEDOM SQUARE

8375 & 8385 Green Level Church Road, Apex, NC 27523



Karah Jennings McConnell
kjennings@lee-associates.com
O: 919.576.2502
C: 919.817.0705

James Bailey, SIOR, J.D.
jbailey@lee-associates.com
O: 919.576.2514
C: 336.602.3022

Moss Withers, SIOR, MBA
mwithers@lee-associates.com
O: 919.576.2501

 **LEE &
ASSOCIATES**
COMMERCIAL REAL ESTATE SERVICES
RALEIGH • DURHAM • WILMINGTON

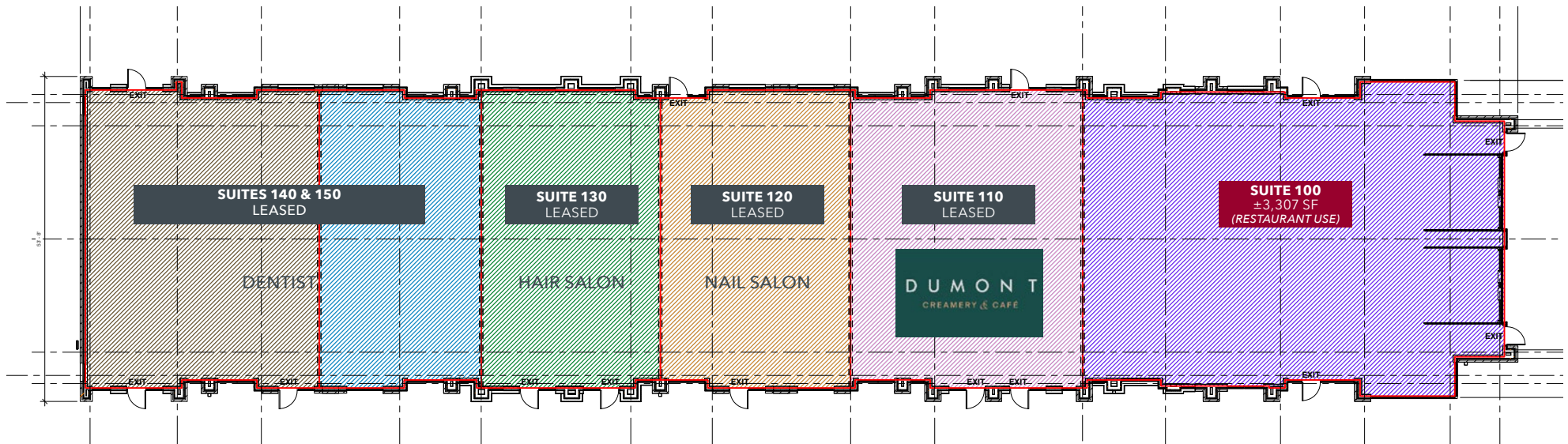
BUILDING ONE

FREEDOM SQUARE

8385 Green Level Church Road, Apex, NC 27523



- » ±3,307 SF available for lease
- » Endcap space with glass roll up door and outdoor patio seating
- » Shared grease trap in place for Buildings One and Two to accommodate restaurant uses
- » Tenant improvement allowance available
- » Cold dark shell delivery



Karah Jennings McConnell
kjennings@lee-associates.com
O: 919.576.2502
C: 919.817.0705

James Bailey, SIOR, J.D.
jbailey@lee-associates.com
O: 919.576.2514
C: 336.602.3022

Moss Withers, SIOR, MBA
mwithers@lee-associates.com
O: 919.576.2501

LEE & ASSOCIATES
COMMERCIAL REAL ESTATE SERVICES
RALEIGH • DURHAM • WILMINGTON

NEARBY AMENITIES

DISTANCES

NC 540 Hwy	1 Mile
NC 55 Hwy	3.4 Miles
Research Triangle Park	5.6 Miles
RDU Airport	10.4 Miles



GOLF GALAXY **HOBBY LOBBY** **RH OUTLET** **crumbl cookies**
petco **FIVE GUYS** **Chuy's**
CLUB PILATES **HICKORY CREEK** **T.J. MAXX** **Harris Teeter** **Starbucks**
Joey Mize **Tanera** **COURTYARD BY HARRIOTT** **Chick-fil-A**

Publix **ALDI** **CVS pharmacy**
Harris Teeter **Auto Zone**
DUNKIN' **McDonald's**

WHOLE FOODS MARKET **THE FARM MARKET**
MOES **UNC HEALTH**

Wegmans **Walmart Neighborhood Market** **DQ**
Smithfield's **Walgreens** **McDonald's** **CVS pharmacy**

Publix pharmacy **WALMART**
Harris Teeter **TRIBECA TAVERN** **SPINNY'S**
TAZZA **FAST MED URGENT CARE** **Bojangles** **Red Lobster**
DOBERTY'S **FIRST WATCH** **Chick-fil-A** **JP**

Walmart Neighborhood Market **Starbucks** **CVS pharmacy**
DUNKIN' **Biscuitville**

the Y

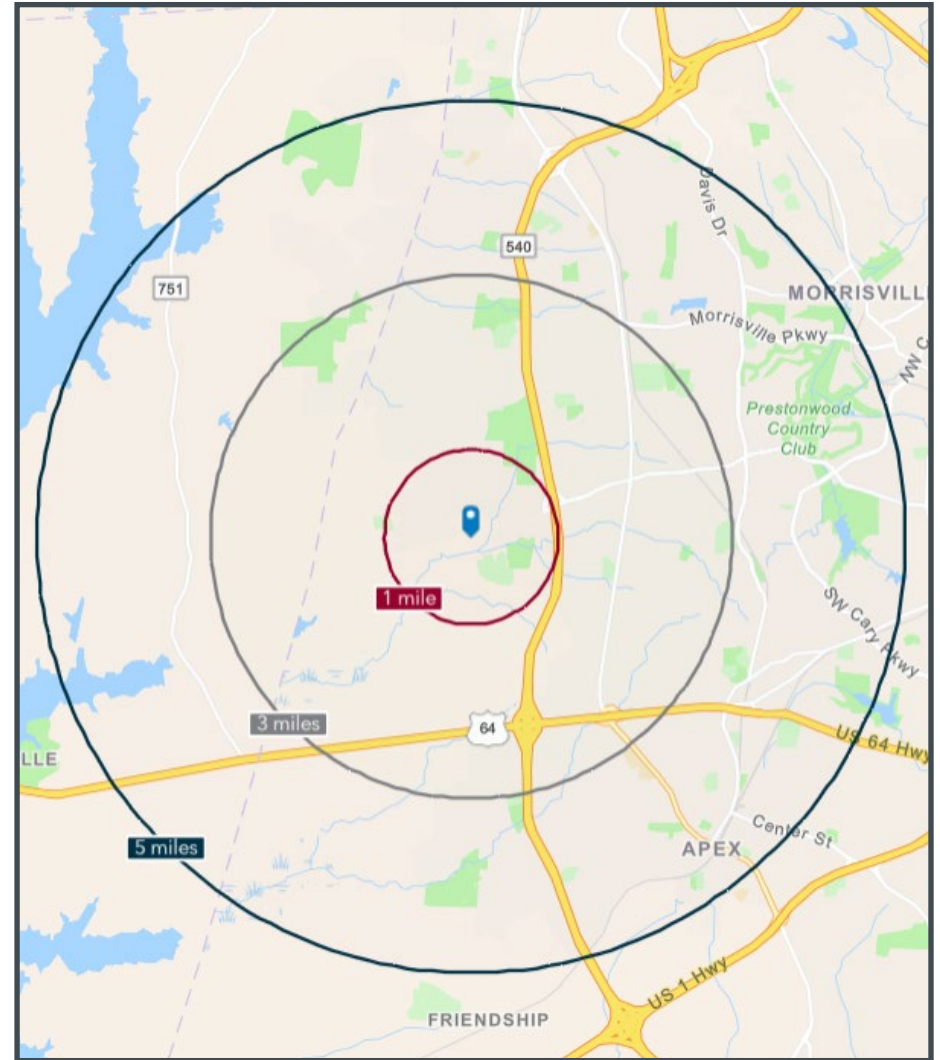
DukeHealth

DEMOGRAPHICS

FREEDOM SQUARE

8375 & 8385 Green Level Church Road, Apex, NC 27523

	1 MILE	3 MILES	5 MILES
Population (2024)	4,004	58,464	178,955
Median Age	37.8	38.6	38.8
Average Household Income	\$189,654	\$195,346	\$186,679
Average Home Value	\$748,260	\$670,824	\$634,473
Bachelor's Degree or Higher	81.0%	78.8%	76.1%



Karah Jennings McConnell
 kjennings@lee-associates.com
 O: 919.576.2502
 C: 919.817.0705

James Bailey, SIOR, J.D.
 jbailey@lee-associates.com
 O: 919.576.2514
 C: 336.602.3022

Moss Withers, SIOR, MBA
 mwithers@lee-associates.com
 O: 919.576.2501