

High-End Office Space Four Full-Floors Available

FOR SUBLEASE

Domain Tower, 10721 Domain Drive, Austin, TX



SPACE PROFILE

118,185 SF
Total Available SF

Floor 8
29,398 SF

Floor 9
29,398 SF

Floor 10
29,511 SF

Floor 11
29,878 SF

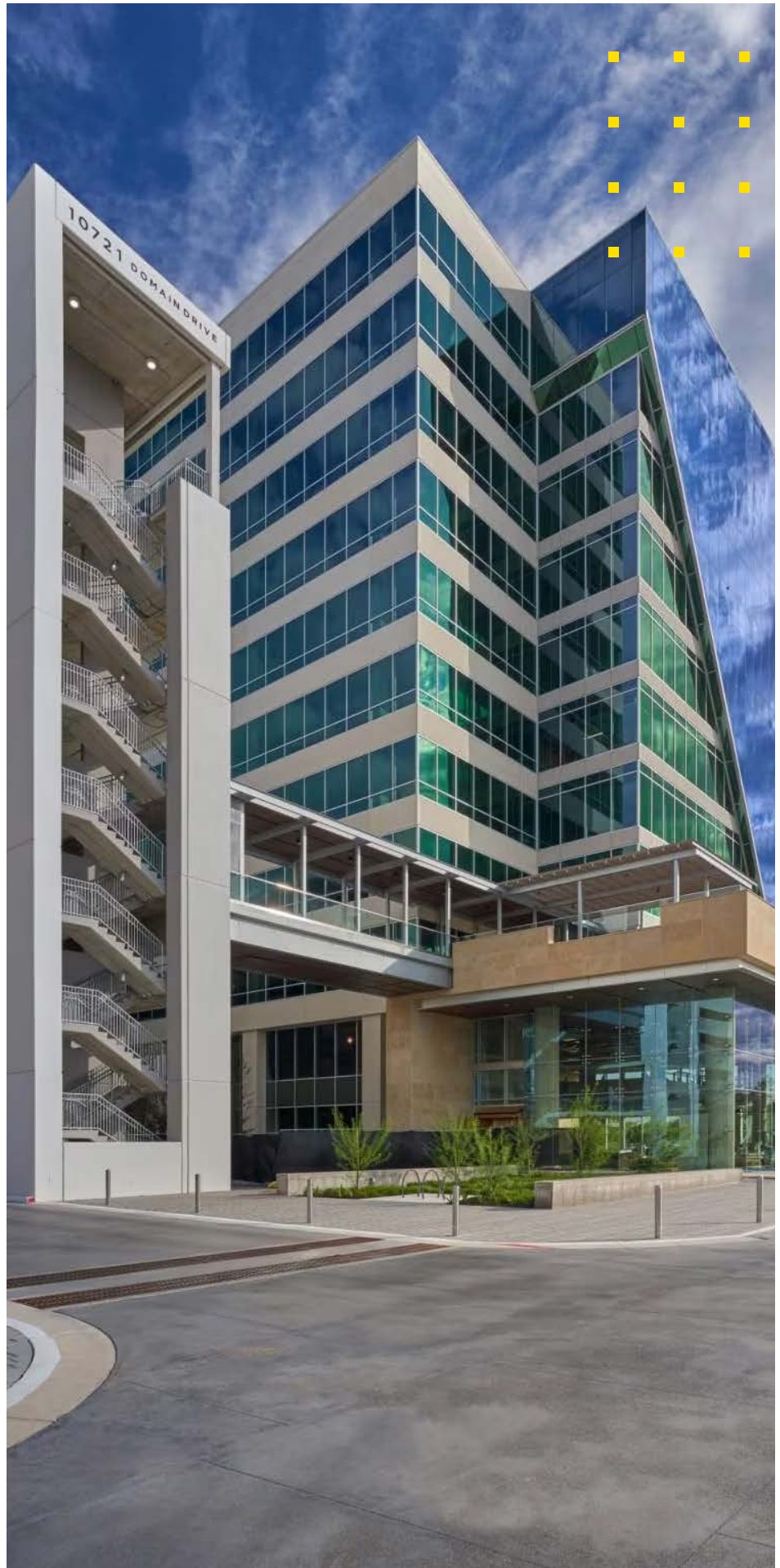
12/31/2033
Sublease Expiration

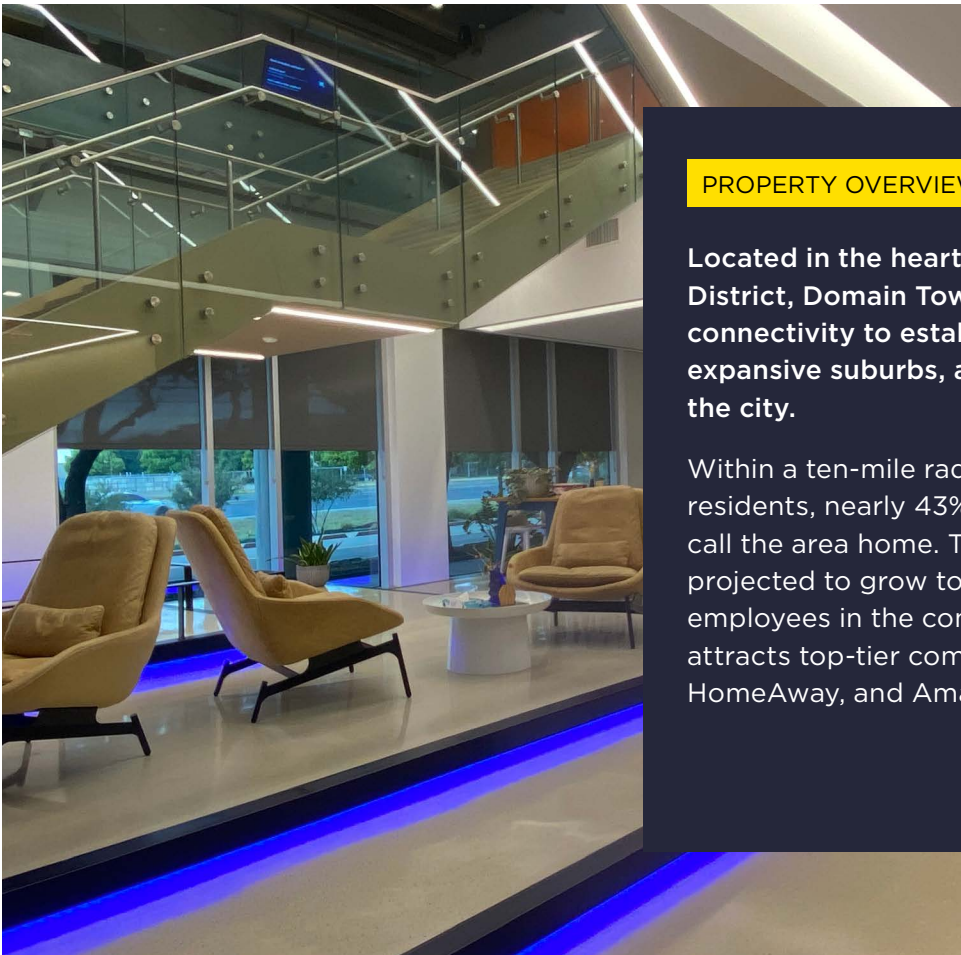
Contact Broker
Availability

4:1,000
Parking spaces

\$39NNN
Rental rate

Move-in ready
Fully furnished

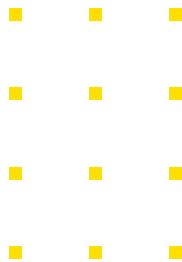
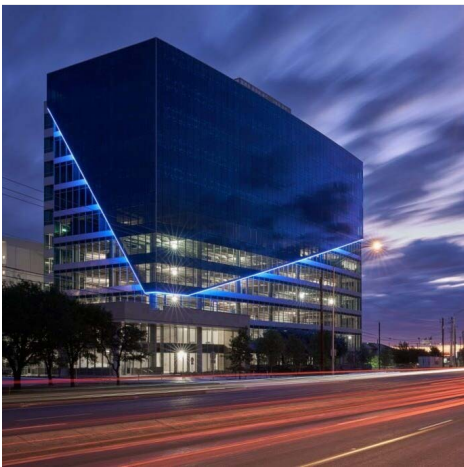


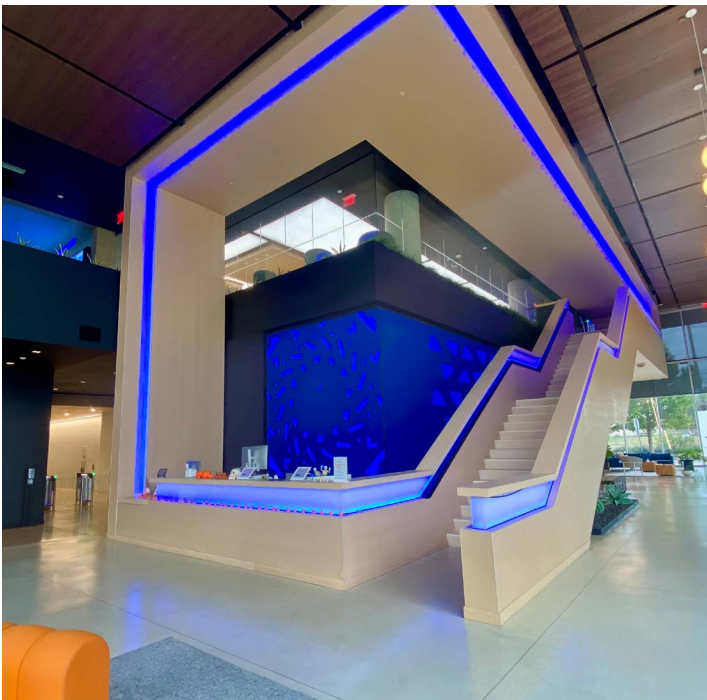


PROPERTY OVERVIEW

Located in the heart of Austin's vibrant Domain District, Domain Tower offers unparalleled connectivity to established neighborhoods, expansive suburbs, and key business hubs across the city.

Within a ten-mile radius, approximately 824,000 residents, nearly 43% of the Austin MSA population, call the area home. The Domain community itself is projected to grow to 6,000 residents and 12,000 employees in the coming years. The district also attracts top-tier companies such as IBM, Accruent, HomeAway, and Amazon.





BUILDING HIGHLIGHTS

- Eleventh Floor Rooftop Terrace (Exclusive Only to Individuals with Access to Eleventh Floor)
- Structured Parking Garage
- Building Conference Center
- Outdoor Fitness Areas
- On-site Concierge
- Shuttle/Bike Rental Program

State-of-the-Art Design

Experience a modern, thoughtfully designed building featuring smart conference rooms, a fully equipped fitness center, and a convenient bike-sharing program connecting tenants to nearby dining, retail, and entertainment.

Rooftop Terrace

Take in sweeping Austin views from the exclusive 11th-floor rooftop terrace. With ample space to relax, entertain, and connect, this elevated retreat leaves a lasting impression on tenants and guests alike.

Parking Garage

A six-story parking deck on the north side of the building provides a convenient 4:1000 parking ratio. Tenants can easily access the third-floor patio through a skywalk connecting the garage to the main building.

Ground Floor Amenities

Along with a modern lobby, the ground floor features 12,500 square feet of high-visibility tenant space.

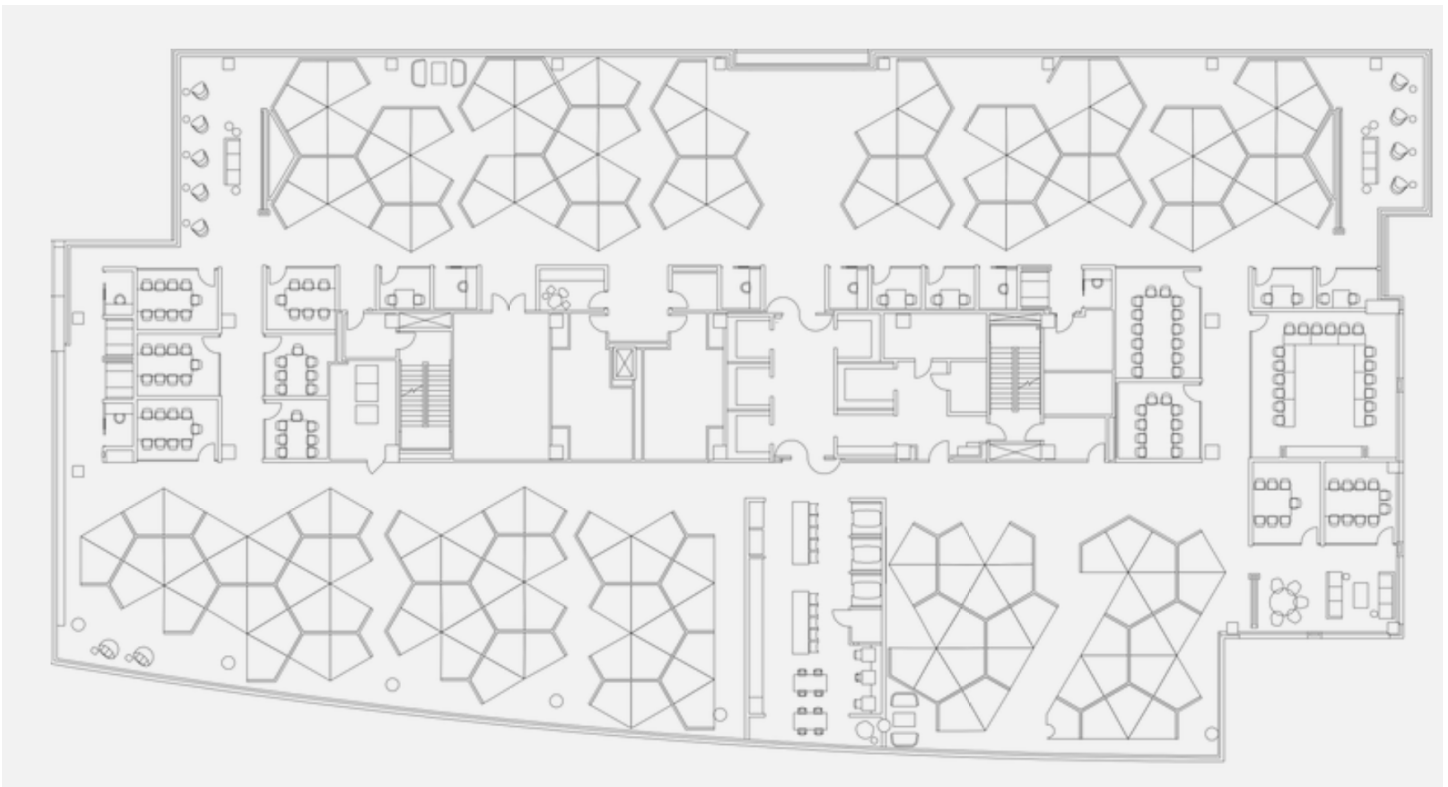
8th FLOOR

29,398 SF Available



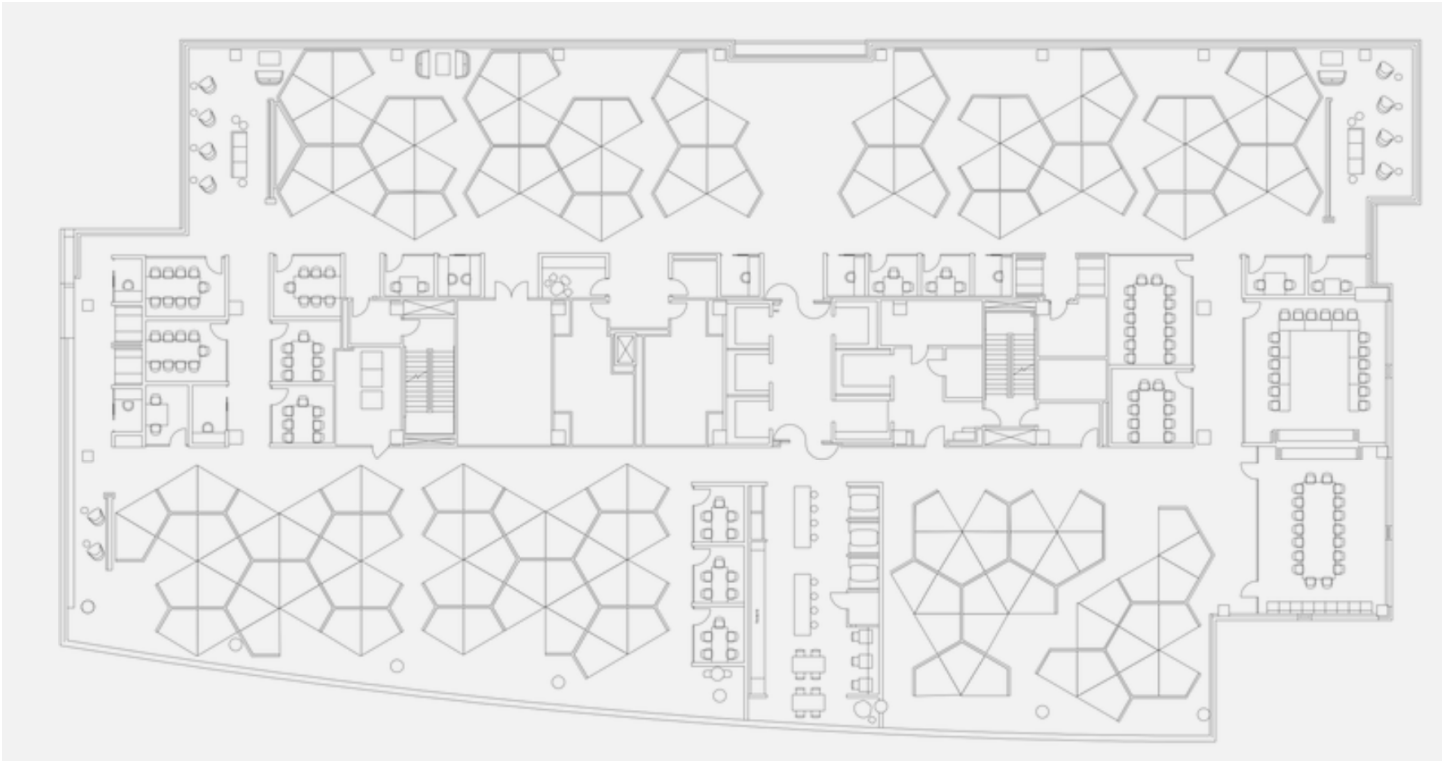
9th FLOOR

29,398 SF Available



10th FLOOR

29,511 SF Available

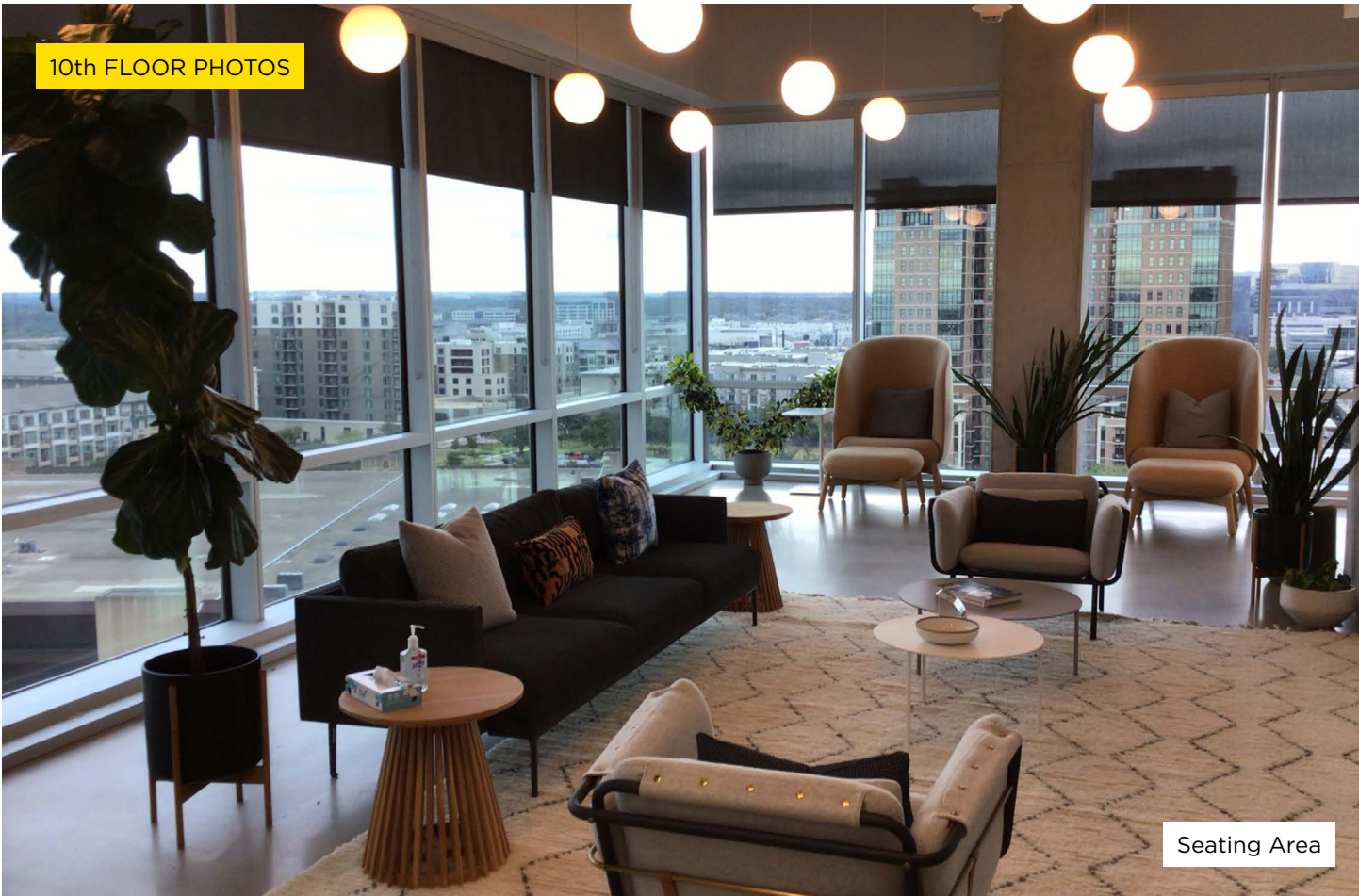


11th FLOOR

29,878 SF Available



10th FLOOR PHOTOS



Seating Area



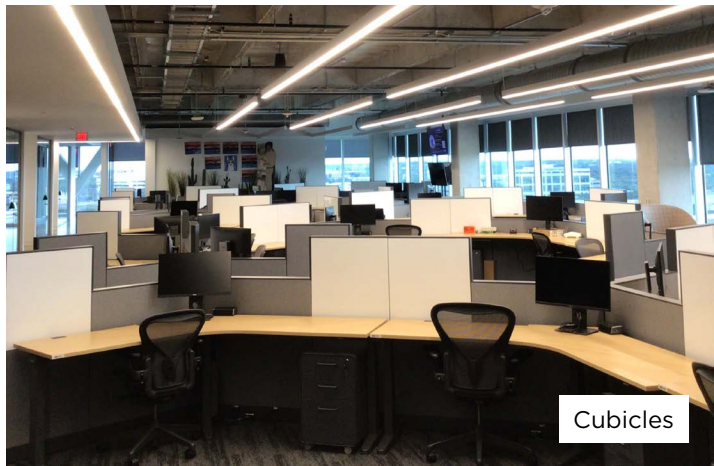
Kitchen



Conference Room



Training Room

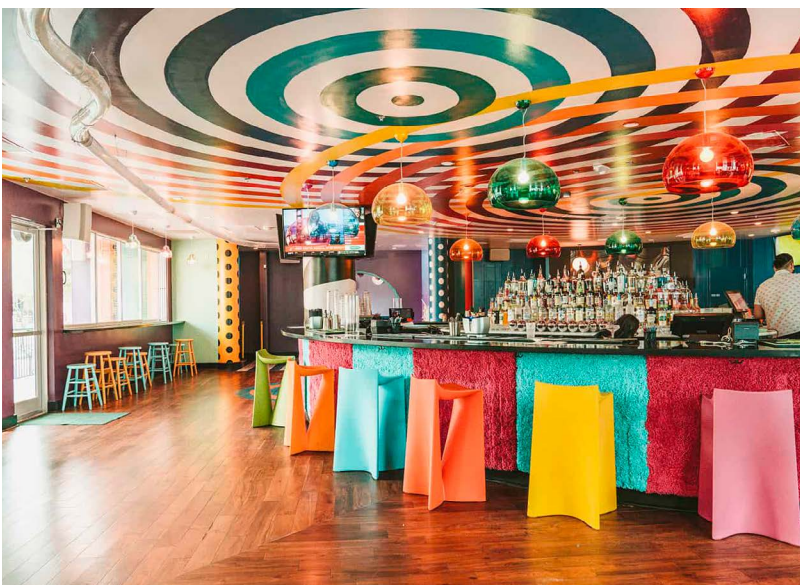


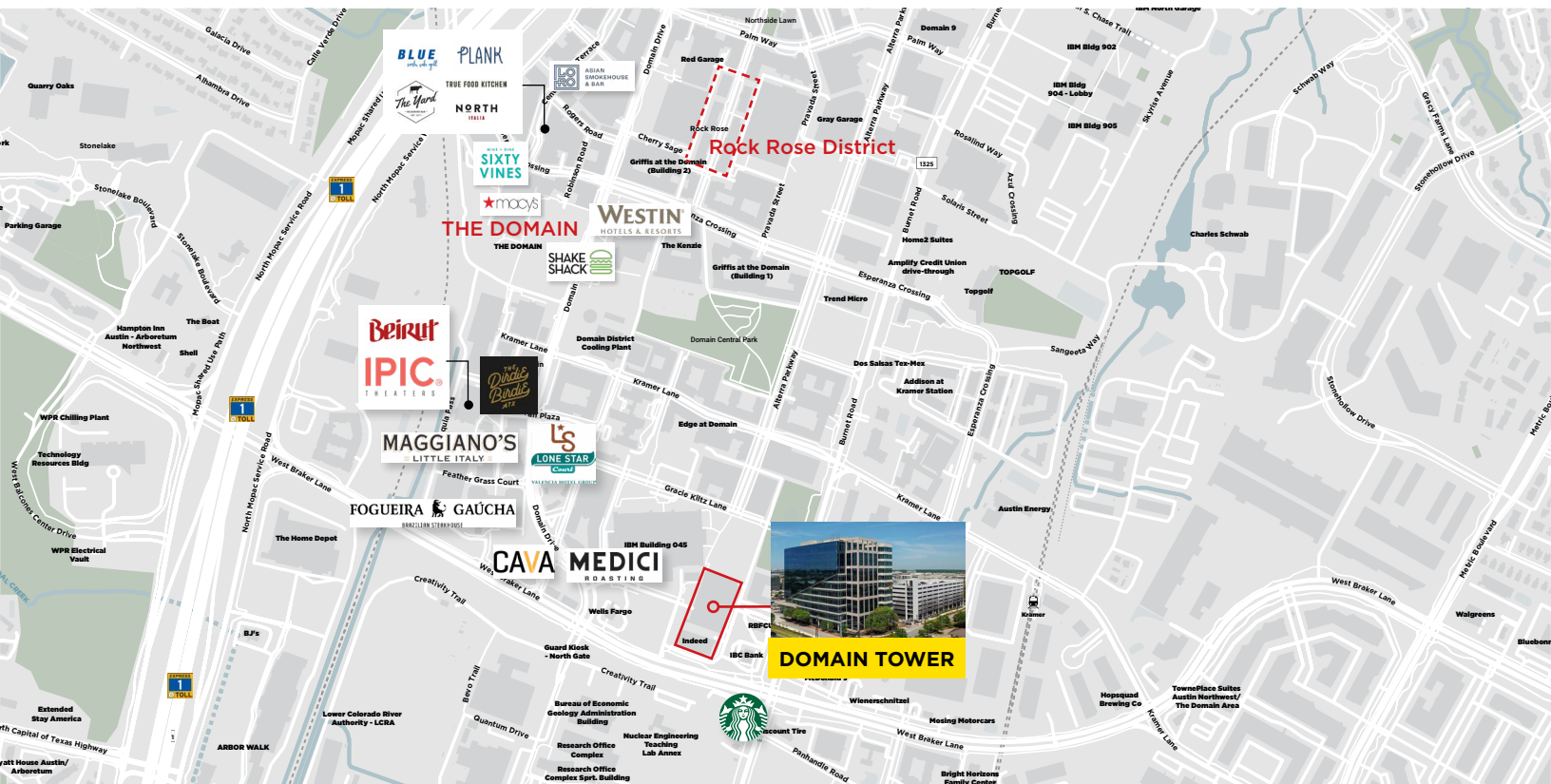
Cubicles



ROCK ROSE DISTRICT

In the center of Austin's Domain District, Rock Rose is emerging as a premier destination for dining, nightlife, and shopping. Spanning 100,000 square feet, the block highlights local Austin restaurants, lively entertainment venues, and stylish retail concepts.





Todd Chessher
 +1 512 415 3121
toddchessher@gmail.com

Erin Morales
 +1 512 256 8421
emorales@savills.us

Hudson Hall
 +1 512 256 8431
hhall@savills.us



The information contained in this communication has been obtained from a variety of sources believed to be reliable but has not been verified. NO WARRANTY OR REPRESENTATION, EXPRESS OR IMPLIED, IS MADE AS TO THE CONDITION OF THE PROPERTY OR ACCURACY OR COMPLETENESS OF THE INFORMATION CONTAINED HEREIN AND SAME IS SUBMITTED SUBJECT TO ERRORS, OMISSIONS, CHANGE OF PRICE, RENTAL OR OTHER CONDITIONS, WITHDRAWAL WITHOUT NOTICE AND TO ANY SPECIFIC CONDITIONS IMPOSED BY THE PROPERTY OWNER OR LESSOR.