

CONTEMPORARY OFFICE

FOR SALE OR LEASE



PROPERTY DETAILS

2250 S. 800 W., Woods Cross, UT 84087

Lease Rate: \$26.00/ SF Full Service

- 2,368–30,355 SF available
- 1.35 acres
- Purchase to include an improvement credit
- Modern layouts and options
- 89 parking stalls (4/1,000 ratio)
- Recently renovated; built in 1980
- Immediate I-15 access
- Indoor court/fitness area
- Men's and women's locker rooms including saunas, steam room and showers
- CenturyLink and Comcast fiber available



CHRIS FALK, CCIM, SIOR
cfalk@newmarkmw.com
direct 801.499.6514
[View Profile](#)

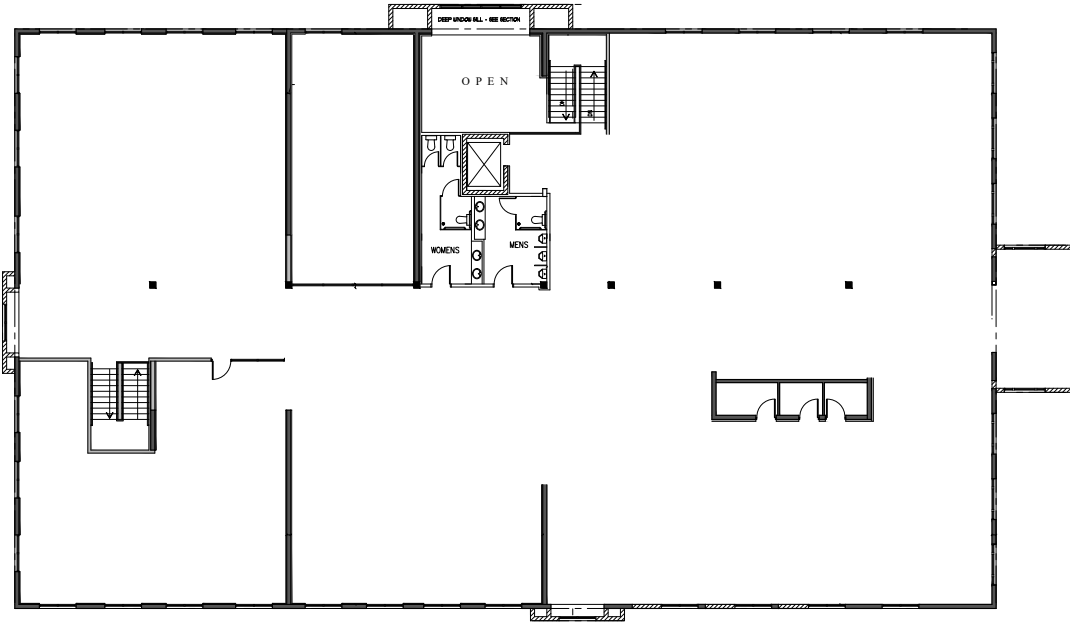
BRAXTON WILLIE, CCIM
bwillie@newmarkmw.com
direct 801.803.3334
[View Profile](#)

BRANSON WOOD
bwood@newmarkmw.com
direct 801.510.5207
[View Profile](#)

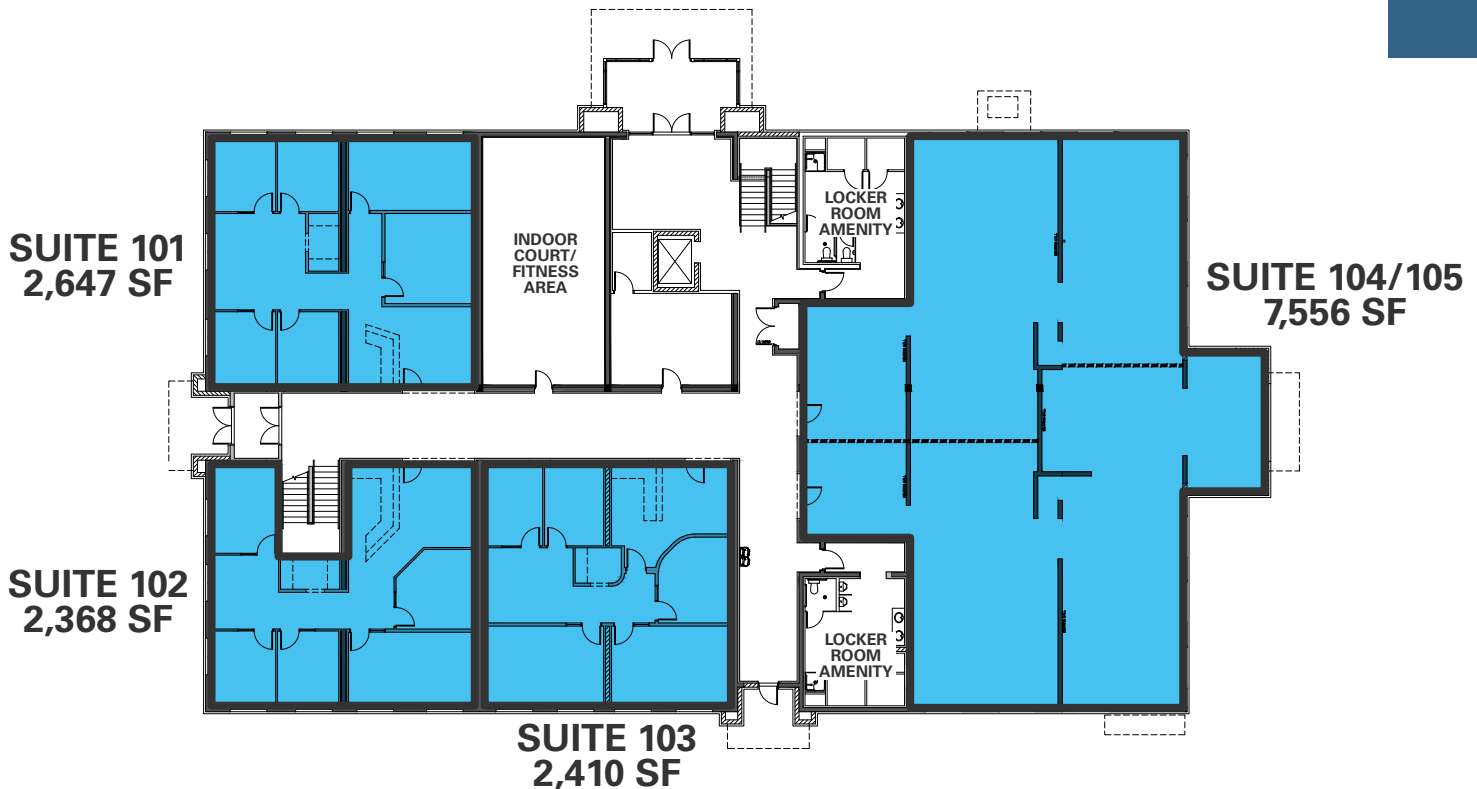
**FULL SERVICE
COMMERCIAL REAL ESTATE**
1410 S University Park Blvd, Ste 120
Clearfield, Utah 84015
Office 801.578.5580
www.newmarkmw.com

CONTEMPORARY OFFICE

SECOND FLOOR: 15,374 SF



FIRST FLOOR: 14,981 SF



CHRIS FALK, CCIM, SIOR
cfalk@newmarkmw.com
direct 801.499.6514
[View Profile](#)

BRAXTON WILLIE, CCIM
bwillie@newmarkmw.com
direct 801.803.3334
[View Profile](#)

BRANSON WOOD
bwood@newmarkmw.com
direct 801.510.5207
[View Profile](#)

**FULL SERVICE
COMMERCIAL REAL ESTATE**
1410 S University Park Blvd, Ste 120
Clearfield, Utah 84015
Office 801.578.5580
www.newmarkmw.com



CHRIS FALK, CCIM, SIOR
 cfalk@newmarkmw.com
 direct 801.499.6514
[View Profile](#)

BRAXTON WILLIE, CCIM
 bwillie@newmarkmw.com
 direct 801.803.3334
[View Profile](#)

BRANSON WOOD
 bwood@newmarkmw.com
 direct 801.510.5207
[View Profile](#)

**FULL SERVICE
 COMMERCIAL REAL ESTATE**
 1410 S University Park Blvd, Ste 120
 Clearfield, Utah 84015
 Office 801.578.5580
www.newmarkmw.com