

1223 N TUSTIN AVE, ANAHEIM



WWW.THEGUTIERREZGROUP.COM

PROPERTY FEATURES:

3,485 SQ FT | OFFICE SPACE: 2,219 SQ FT AND WAREHOUSE SPACE: 1,021 SQ FT

PROPERTY:

- GROUND LEVEL: 3 OFFICES, RECEPTION ROOM, & 14' CEILING WAREHOUSE
- SECOND LEVEL: 2 OFFICES & CONFERENCE ROOM
- VISIBILITY TO TUSTIN AVE WITH 28,000 VPD
- PARKING RATIO: 5.74/1,000 SF
- HOA: \$464/MONTH
- ZONED: SP 2015-1

LOCATION:

- LOCATED LESS THAN A MILE AWAY FROM FWY 91 CONNECTING TO 55 FWY AND 57 FWY

VIRTUAL TOUR:

3D MATTERPORT LINK: [HTTPS://MY.MATTERPORT.COM/SHOW/M=AU9MYDKD4QK&BRAND=0&MLS=1&](https://my.matterport.com/show/m=AU9MYDKD4QK&BRAND=0&MLS=1&)

PERMITTED USES:

- AMBULANCE SERVICES
- AUTOMOTIVE-SERVICE STATIONS
- BUSINESS & FINANCIAL SERVICES
- INDUSTRY
- INDUSTRY-HEAVY
- OFFICES, PUBLIC SERVICES
- REPAIR SERVICES
- R&D
- TRUCK REPAIR & SALES
- WAREHOUSING & STORAGE-ENCLOSED
- WHOLESAILING

CONDITIONAL USE PERMIT REQUIRED:

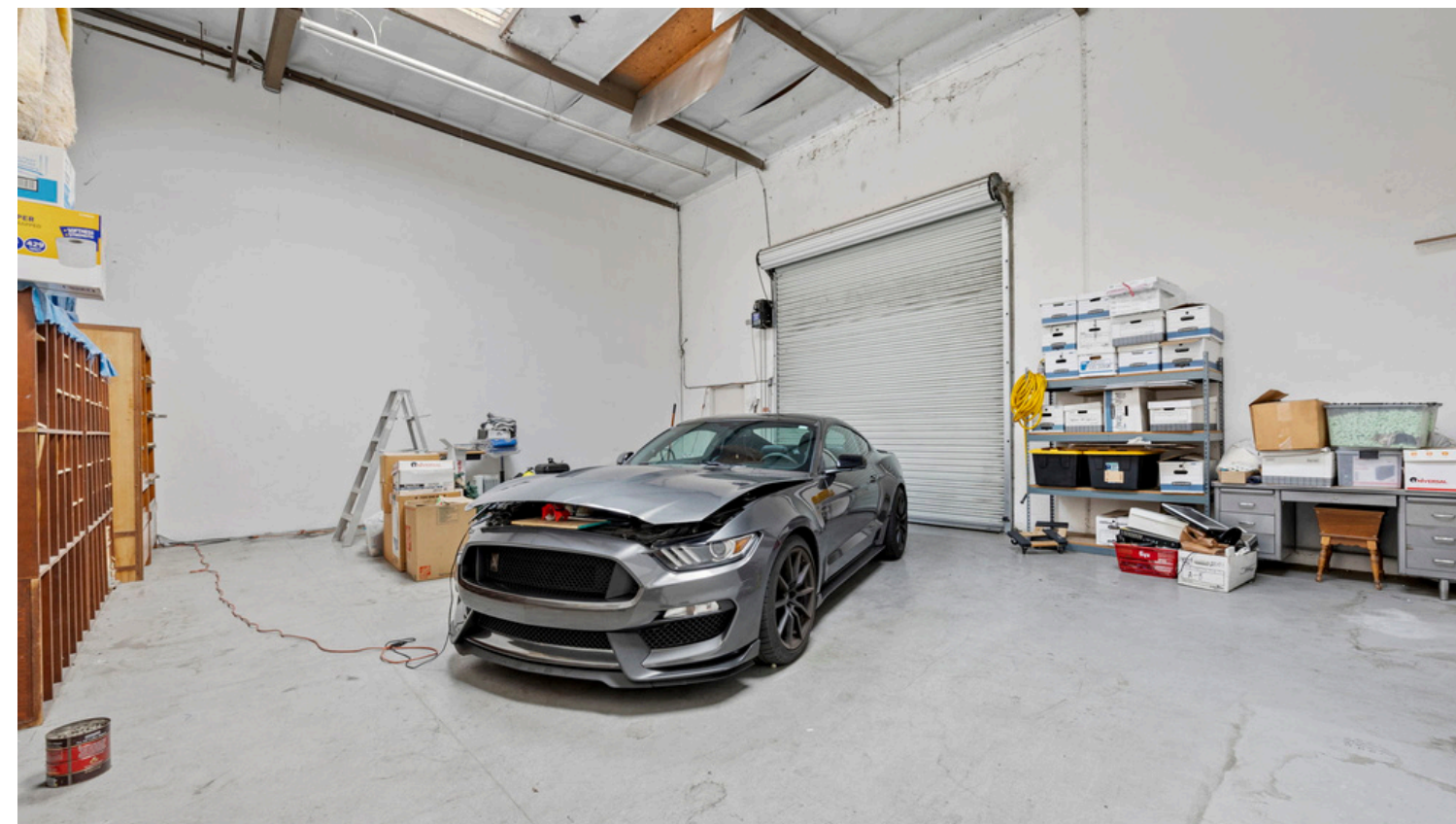
- ALCOHOLIC BEVERAGE
MANUFACTURING
- ANIMAL GROOMING
- AUTOMOTIVE-VEHICLE SALES, LEASE &
RENTAL
- AUTOMOTIVE-REPAIR & MODIFICATION:
MAJOR
- BANQUET HALLS
- BUILDING MATERIAL SALES
- EQUIPMENT RENTAL-SMALL
- STUDIOS-BROADCASTING
- STUDIOS-RECORDING

SOURCE-ANAHEIM CANYON. TABLE 120-B. DA-1 COLUMN:

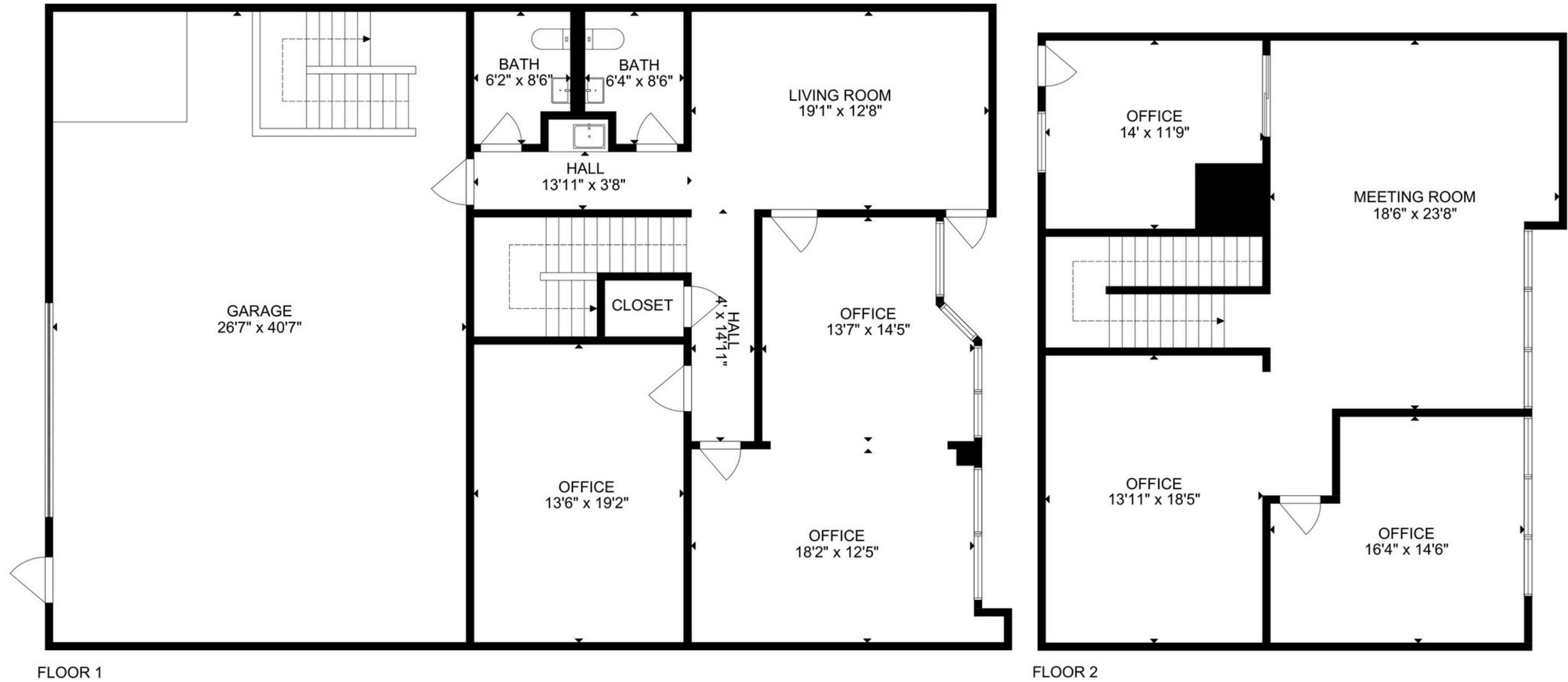
[HTTPS://CODELIBRARY.AMLEGAL.COM/CODES/ANAHEIM/LATEST/ANAHEIM_CA/0-0-0-75243](https://CODELIBRARY.AMLEGAL.COM/CODES/ANAHEIM/LATEST/ANAHEIM_CA/0-0-0-75243)











GROSS INTERNAL AREA
FLOOR 1: 1377 SQ FT, FLOOR 2: 1280 SQ FT
EXCLUDED AREA: GARAGE: 1119 SQ FT
TOTAL: 2657 SQ FT
SIZE AND DIMENSIONS ARE APPROXIMATE, ACTUAL MAY VARY

Population	1 Mile	3 Miles	5 Miles
Population	30,396	229,978	543,364
Median Age	39.2	38.3	37.8
Employment	25,005	186,006	439,730
Median Household Income	\$119,062	\$118,231	\$115,505



LÉO GUTIERREZ

714.875.8737

LEO@THEGUTIERREZGROUP.COM

02107407

STEPHANIE BELLO

714.760.7729

STEPHANIE@THEGUTIERREZGROUP.COM

02205996

REAL ESTATE BROKERAGE SERVICES ARE PROVIDED IN STRATEGIC COLLABORATION WITH PELLEGO, INC., LICENSE NO. 02043232.

THE INFORMATION CONTAINED HEREIN HAS BEEN OBTAINED FROM SOURCES DEEMED RELIABLE BUT HAS NOT BEEN VERIFIED AND NO GUARANTEE, WARRANTY OR REPRESENTATION, EITHER EXPRESS OR IMPLIED, IS MADE WITH RESPECT TO SUCH INFORMATION. TERMS OF SALE OR LEASE AND AVAILABILITY ARE SUBJECT TO CHANGE OR WITHDRAWAL WITHOUT NOTICE.

THIS MEMORANDUM OFFERS A SUMMARY OF INFORMATION ABOUT THE PROPERTY AND SHOULD BE VIEWED AS A PRELIMINARY RESOURCE FOR PROSPECTIVE INVESTORS. WHILE THE INFORMATION PROVIDED IS SOURCED FROM WHAT IS BELIEVED TO BE RELATABLE, IT IS PRESENTED WITHOUT ANY GUARANTEE OF ACCURACY OR COMPLETENESS. PROSPECTIVE PURCHASERS ARE ENCOURAGED TO PERFORM THEIR DUE DILIGENCE AND CONSULT WITH LEGAL AND FINANCIAL ADVISORS. ALL NEGOTIATIONS AND COMMUNICATIONS ARE NON-BINDING UNTIL A DEFINITIVE PURCHASE AND SALE AGREEMENT ARE EXECUTED. THE SELLER AND ITS REPRESENTATIVES RESERVE THE RIGHT TO MODIFY OR WITHDRAW ANY OFFER OR DISCUSSIONS AT ANY TIME. PRICING AND VALUE PROJECTIONS ARE SUBJECT TO CHANGE AND SHOULD NOT BE SOLEY RELIED UPON. RESPONSIBILITY FOR THE USE OF ANY CONTENT IN THIS MEMORANDUM RESTS WITH THE RECIPIENT.