

# Red River

## Logistics Center

951 Gowen Road, Boise, ID

CONSTRUCTION COMPLETE  
IMMEDIATE AVAILABILITY

FOR LEASE ±900,981 SF  
divisible

Jake Miller, SIOR | Senior Vice President | +1 208 589 2950 | [jake.miller@cbre.com](mailto:jake.miller@cbre.com)

Harry Sawyer, MSRE | Vice President | +1 208 830 5272 | [harrison.sawyer@cbre.com](mailto:harrison.sawyer@cbre.com)

Scott Ketlinski | Associate | +1 208 608 6300 | [scott.ketlinski@cbre.com](mailto:scott.ketlinski@cbre.com)



# PROPERTY HIGHLIGHTS

Red River  
Logistics Center



- ▶ Stand Alone Class A Industrial Building
- ▶ Largest Spec. Industrial Building Ever Built in the State of Idaho
- ▶ ±900,981 SF (Divisible)
- ▶ Only Available Opportunity for Large Tenants
- ▶ Building Designed as a Cross-Dock Facility
- ▶ Industry Leading 40' Clear Height Throughout
- ▶ Up to 172 Dock Doors Available
- ▶ Ample Employee and Trailer Parking Available Across the Site
- ▶ Access to Multiple I-84 On-Ramps
- ▶ Located in the Desirable Airport Submarket
- ▶ City of Boise Heavy Industrial District (M2D), Allows for Greatest Variety of Industrial Uses
- ▶ Project is Located within the Gateway East Urban Renewal District - [\*\*CLICK FOR MORE INFO.\*\*](#)

Jake Miller, SIOR | Senior Vice President | +1 208 589 2950 | [jake.miller@cbre.com](mailto:jake.miller@cbre.com)

Harry Sawyer, MSRE | Vice President | +1 208 830 5272 | [harrison.sawyer@cbre.com](mailto:harrison.sawyer@cbre.com)

Scott Ketlinski | Associate | +1 208 608 6300 | [scott.ketlinski@cbre.com](mailto:scott.ketlinski@cbre.com)

# SITE PLAN

WITH DIVISIBILITY OPTIONS



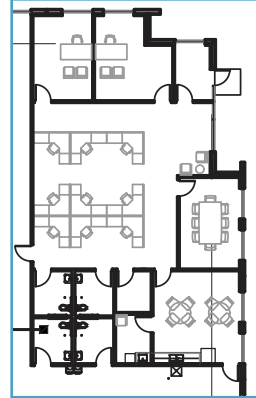
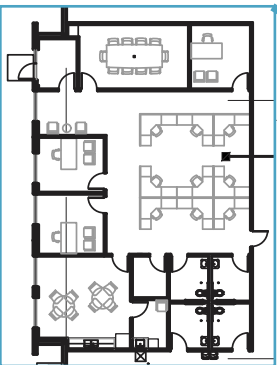
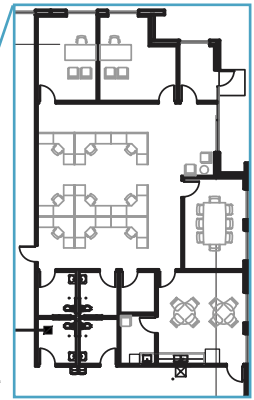
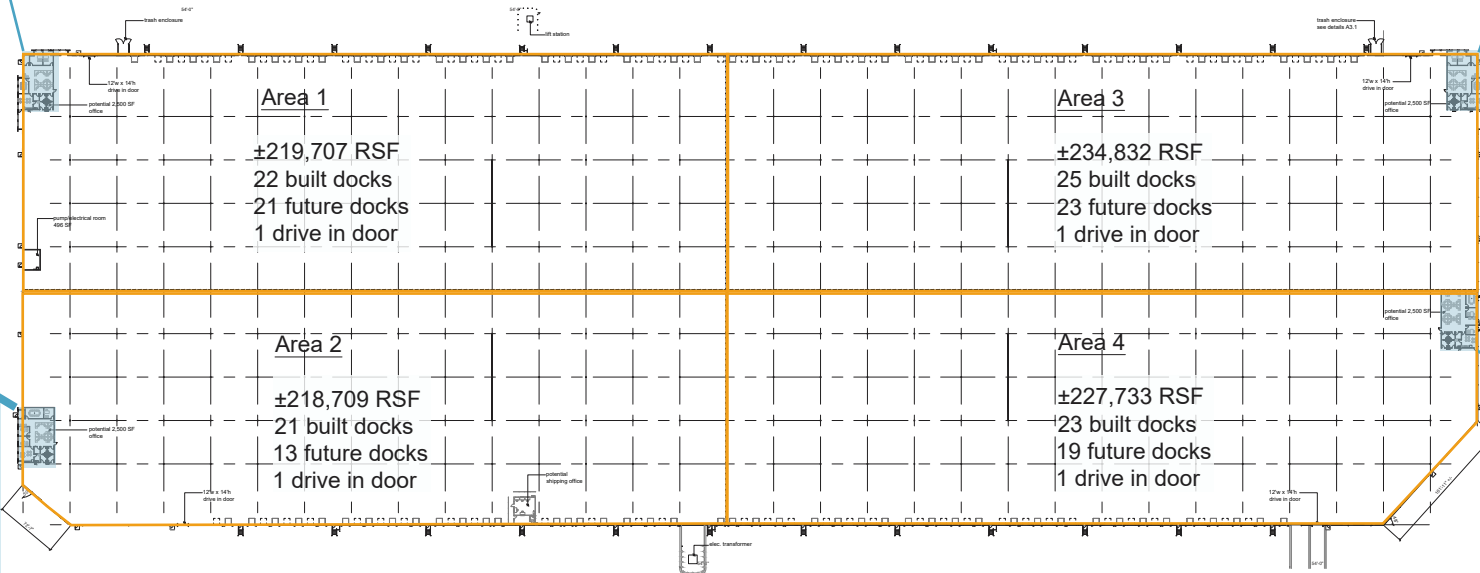
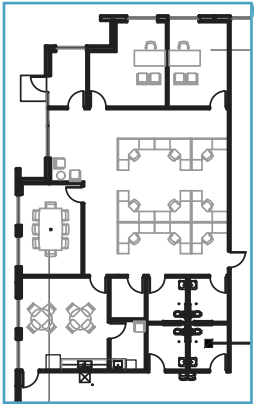
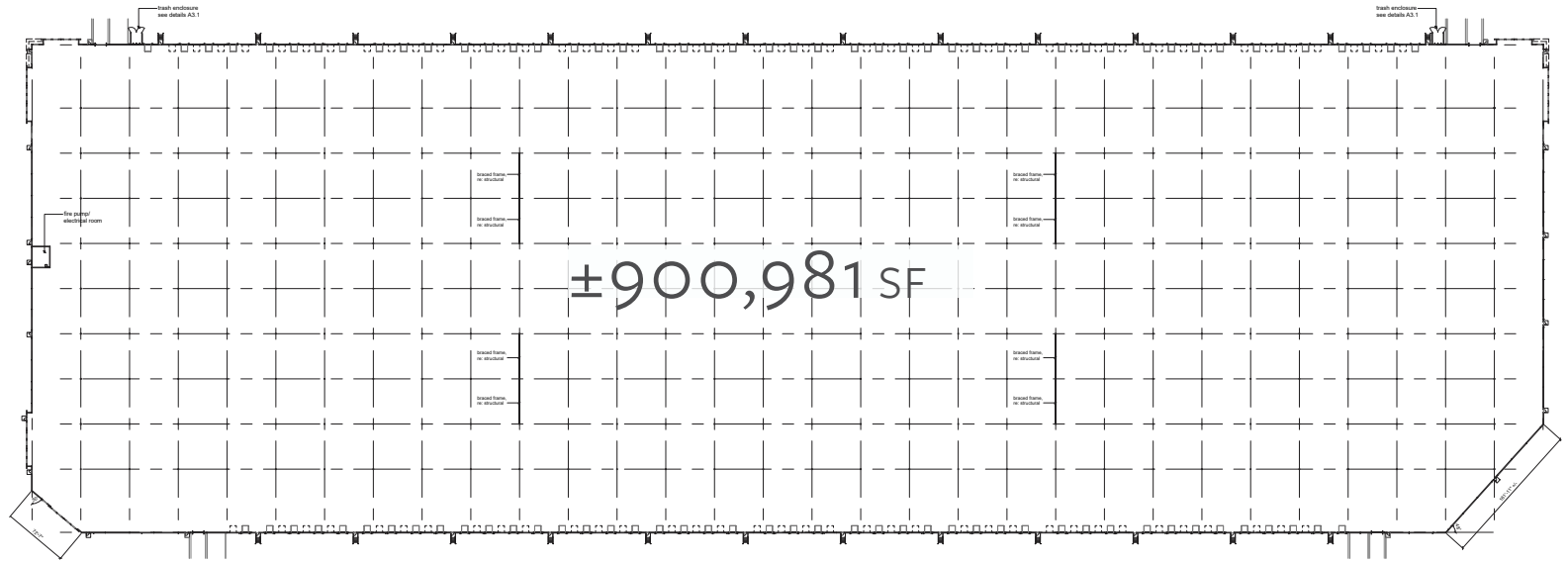
-  40' CLEAR HEIGHT
-  NEARBY AMENITIES
-  AMPLE POWER AVAILABLE
-  ESFR SPRINKLERS
-  LEASE RATE: CONTACT AGENTS

## BUILDING FEATURES

- ▶ Building Size: ±900,981 SF (Divisible)
- ▶ Minimum divisibility ±218,709 SF
- ▶ Office: To suit
- ▶ Site Area: 93.72 Acres
- ▶ Clear Height: 40'
- ▶ Dock High Doors: 91 Built | 81 Future | 172 Total
- ▶ Drive in Doors: 4
- ▶ Auto Parking: 465 Spaces | 330 Future | 795 Total
- ▶ Fire Protection: ESFR
- ▶ Electrical Service: 4000 Amps 480/277V
- ▶ Roofing: 45 Mil White TPO w/R-25 Insulation
- ▶ Lighting: LED, 30 F.C.
- ▶ Building Dimensions: 1,674' x 540'
- ▶ Column Spacing: ±50' x 54' | 54' x 70' Speed Bay

# FLOOR PLAN

## WITH DIVISIBILITY OPTIONS





# Red River

Logistics Center

951 Gowen Rd.  
Boise, ID



photos July 2024



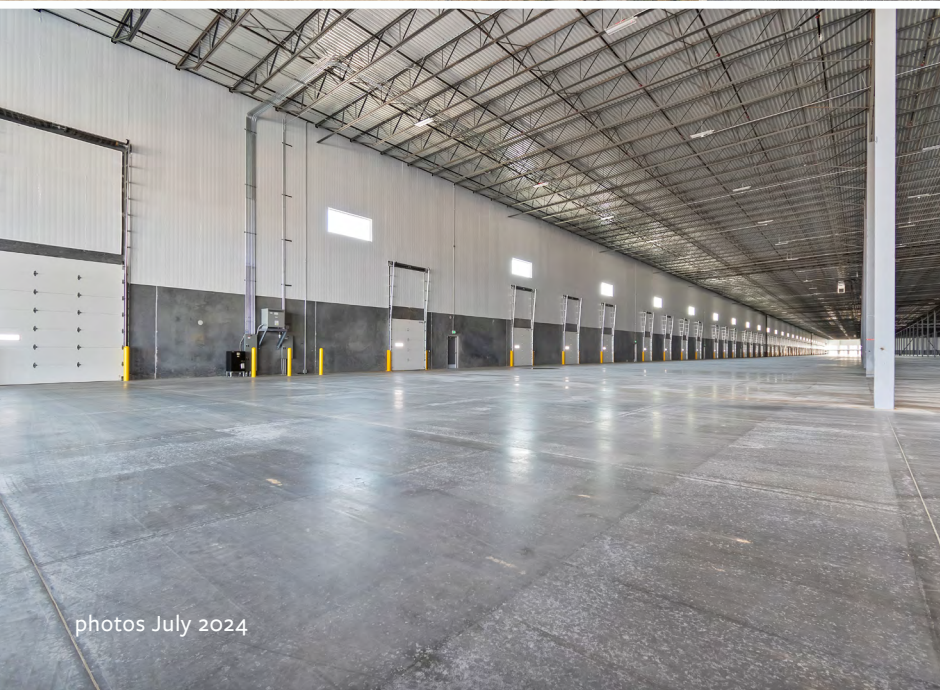
FLINT CBRE



# Red River

Logistics Center

951 Gowen Rd.  
Boise, ID



photos July 2024

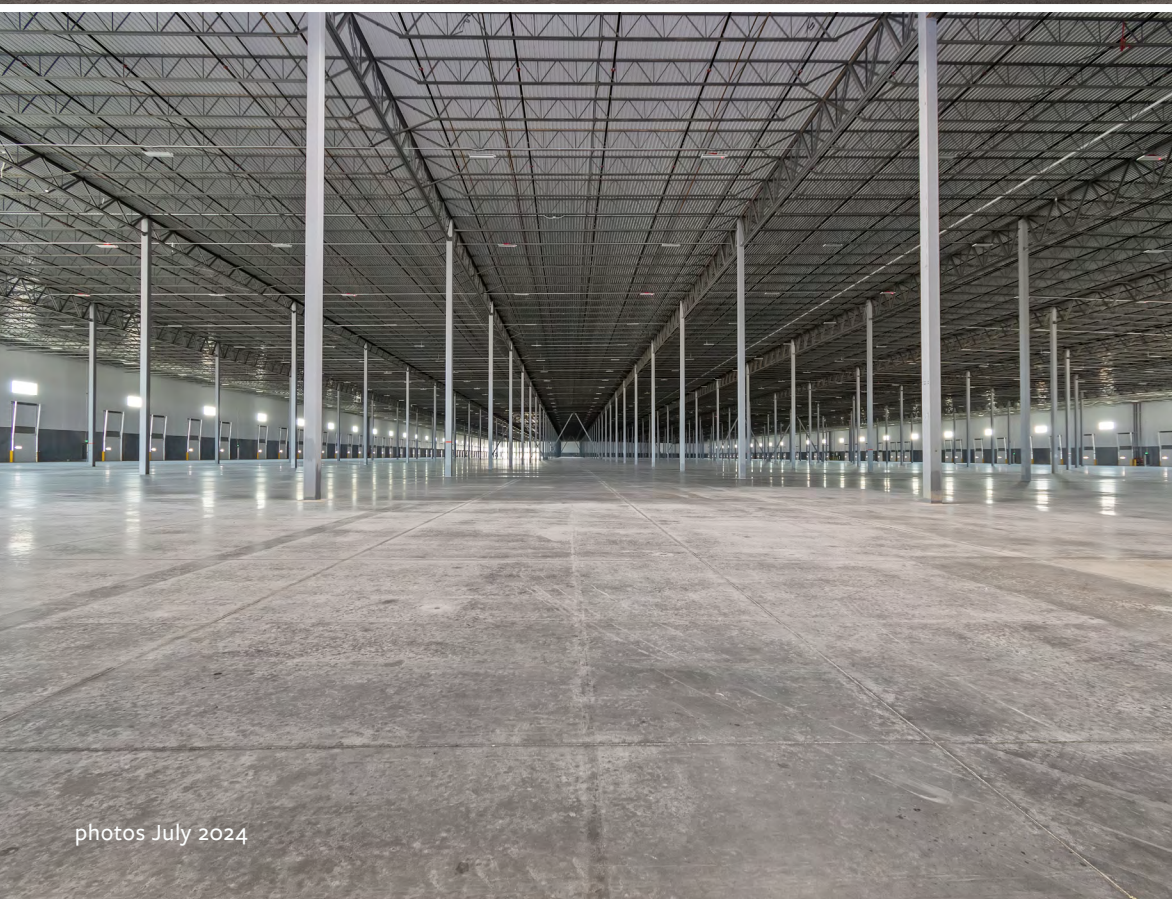
 FLINT  
DEVELOPMENT

 CBRE

# Red River

Logistics Center

951 Gowen Rd.  
Boise, ID



photos July 2024



exterior LED lighting with 1 foot candle  
min. average light intensity

louvers or clerestories as needed

prefinished gutters and downspouts  
with downspout guards

load bearing, tilt-up concrete panels  
with R-13 rigid insulation min on interior  
face from 12'-0" AFF to underside of  
structure, decorative reveals and  
textured paint.

prefinished 9'-0" x 10'-0" insulated overhead  
doors with view panels, and dock equipment  
and 12'-0" x 14'-0" drive-in doors

metal grate stairs and railings

concrete truck apron

54'-0" x 50'-0" typical structural bay spacing

40'-0" clear height at joists beyond speed bay

45 mil TPO roof with R-25 insulation

ESFR fire sprinkler system

metal deck shop primed white

high bay LED lighting with 30 foot candle min.  
average light intensity

fire extinguishers surface mounted within 75'-0"  
travel distance

7" concrete slab over compacted base

54'-0" x 70'-0" speed bay structural spacing

# Red River

Logistics Center

## section exhibit

951 Gowen Rd.  
Boise, ID

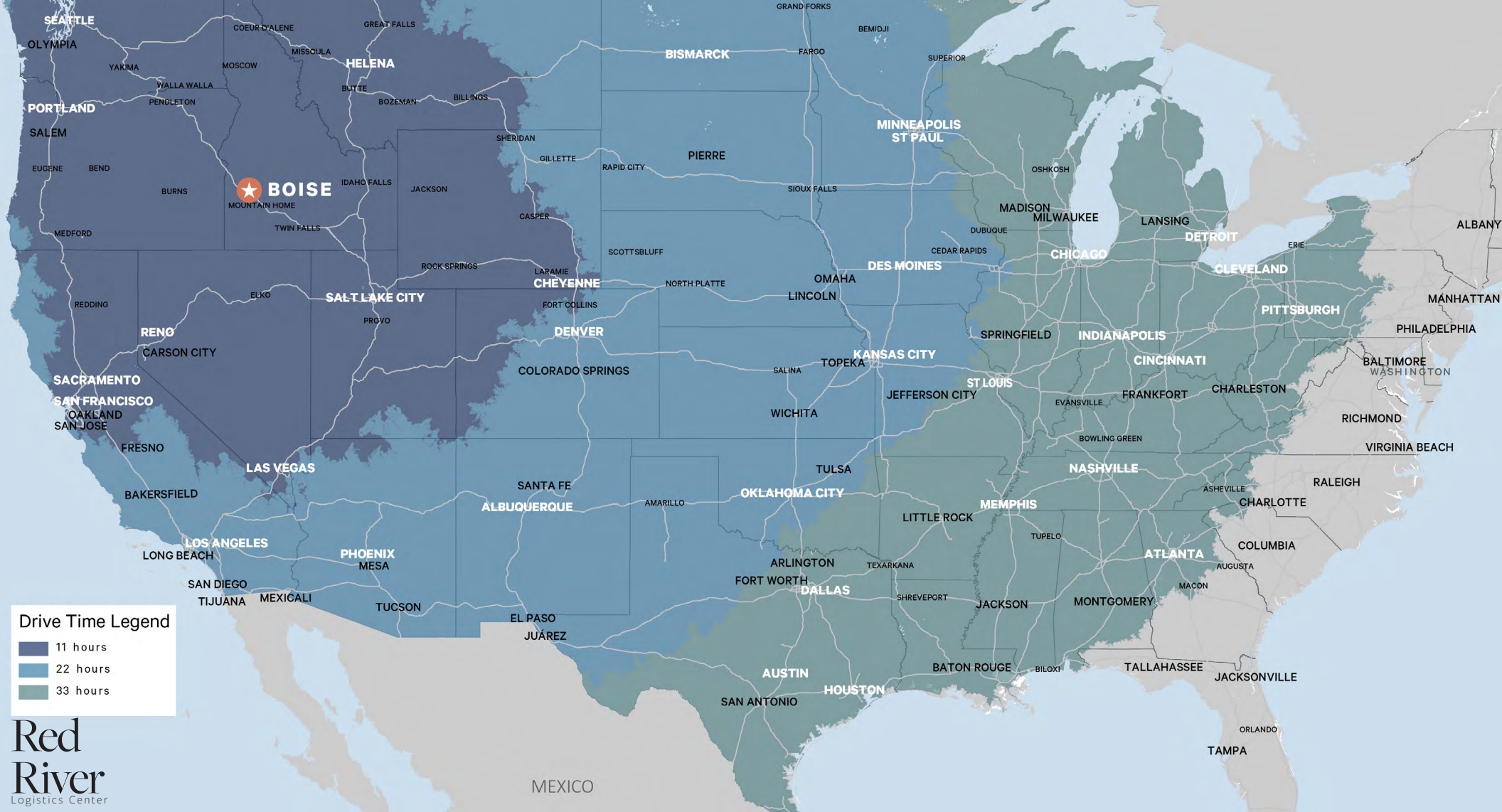
# site location

Red River  
Logistics Center

site

951 Gowen Rd.  
Boise, ID





# Transit Analysis From Boise, ID

ONE DAY TRUCK SERVICE			ONE DAY TRUCK SERVICE			TWO DAY TRUCK SERVICE			THREE DAY TRUCK SERVICE		
	Distance (mi.)	Time (est. hrs.)		Distance (mi.)	Time (est. hrs.)		Distance (mi.)	Time (est. hrs.)		Distance (mi.)	Time (est. hrs.)
Twin Falls, ID	123	2	Missoula, MT	382	8	Buffalo, WY	701	11.25	Atlanta	2,167	31
Idaho Falls, ID	281	3.75	Sacramento, CA	557	8.5	Denver, CO	809	11.5	Chicago	1,687	25
Salt Lake City, UT	334	4.5	Billings, MT	607	9	Bakersfield, CA	831	12.5	Cincinnati	1,924	28
Bend, OR	322	5.25	Casper, WY	702	9	Los Angeles, CA	891	13.25	Dallas	1,583	23.50
Portland, OR	434	6.25	Great Falls, MT	569	9	Phoenix, AZ	910	14	Detroit	1,953	28
Spokane, WA	424	6.25	Las Vegas, NV	618	9.25	San Diego, CA	953	14	Houston	1,820	27
Reno, NV	426	6.5	Redding, CA	594	9.5	Albuquerque, NM	930	14.25	Nashville	1,921	28
Eugene, OR	455	7.5	San Francisco, CA	643	10						
Seattle, WA	508	7.5	Cheyenne, WY	730	10.25						
Medford, OR	475	8	Fresno, CA	723	11						

# Red River

## Logistics Center

9 5 1 G o w e n R o a d , B o i s e



## CONTACT US

Jake Miller, SIOR  
Senior Vice President  
+1 208 589 2950  
jake.miller@cbre.com

Harry Sawyer, MSRE  
Vice President  
+1 208 830 5272  
harry.sawyer@cbre.com

Scott Ketlinski  
Associate  
+1 208 608 6300  
scott.ketlinski@cbre.com

© 2024 CBRE, Inc. All rights reserved. This information has been obtained from sources believed reliable, but has not been verified for accuracy or completeness. You should conduct a careful, independent investigation of the property and verify all information. Any reliance on this information is solely at your own risk. CBRE and the CBRE logo are service marks of CBRE, Inc. All other marks displayed on this document are the property of their respective owners, and the use of such logos does not imply any affiliation with or endorsement of CBRE. Photos herein are the property of their respective owners. Use of these images without the express written consent of the owner is prohibited.

