

# 665

## COLUMBUS AVENUE UPPER WEST SIDE, NYC

Corner of Columbus Avenue & West 92<sup>nd</sup> Street

RETAIL FOR LEASE

### APPROXIMATE SIZE

2,300 SF

### ASKING RENT

\$150 PSF

### POSSESSION

March 2026

### TERM

Negotiable

### FRONTAGE

100 FT Wraparound

### COMMENTS

- Currently "Relive Health"
- Prime retail corner positioned at one of the most trafficked intersections on the Upper West Side
- Excellent branding visibility with expansive storefront exposure
- Surrounded by strong national and neighborhood co-tenancy
- All uses considered

### NEIGHBORS

Orange Theory • Club Pilates • Starbucks • Trader Joe's • Jacob's Pickles • Equinox • Petco • Mattress Firm • Chipotle • AMC • Panera • Fellini Coffee

### TRANSPORTATION



### JAMES FAMULARO

President  
646.658.7373  
jfamularo@meridiancapital.com

### JORDAN LANGER

Senior Associate  
212.468.5977  
jlander@meridiancapital.com



**MERIDIAN**  
RETAIL LEASING

All information supplied is from sources deemed reliable and is furnished subject to errors, omissions, modifications, removal of the listing from sale or lease, and to any listing conditions, including the rates and manner of payment of commissions for particular offerings imposed by Meridian Capital Group. This information may include estimates and projections prepared by Meridian Capital Group with respect to future events, and these future events may or may not actually occur. Such estimates and projections reflect various assumptions concerning anticipated results. While Meridian Capital Group believes these assumptions are reasonable, there can be no assurance that any of these estimates and projections will be correct. Therefore, actual results may vary materially from these estimates and projections. Any square footage dimensions set forth are approximate.

# 665 COLUMBUS AVENUE

UPPER WEST SIDE, NYC | Corner of Columbus Avenue and West 92<sup>nd</sup> Street

RETAIL FOR LEASE



INTERIOR

## JAMES FAMULARO

President  
646.658.7373  
jfamularo@meridiancapital.com

## JORDAN LANGER

Senior Associate  
212.468.5977  
jlanger@meridiancapital.com



**MERIDIAN**  
RETAIL LEASING

All information supplied is from sources deemed reliable and is furnished subject to errors, omissions, modifications, removal of the listing from sale or lease, and to any listing conditions, including the rates and manner of payment of commissions for particular offerings imposed by Meridian Capital Group. This information may include estimates and projections prepared by Meridian Capital Group with respect to future events, and these future events may or may not actually occur. Such estimates and projections reflect various assumptions concerning anticipated results. While Meridian Capital Group believes these assumptions are reasonable, there can be no assurance that any of these estimates and projections will be correct. Therefore, actual results may vary materially from these estimates and projections. Any square footage dimensions set forth are approximate.

# 665 COLUMBUS AVENUE

UPPER WEST SIDE, NYC | Corner of Columbus Avenue and West 92<sup>nd</sup> Street

RETAIL FOR LEASE



INTERIOR

## JAMES FAMULARO

President  
646.658.7373  
jfamularo@meridiancapital.com

## JORDAN LANGER

Senior Associate  
212.468.5977  
jlanger@meridiancapital.com



**MERIDIAN**  
RETAIL LEASING

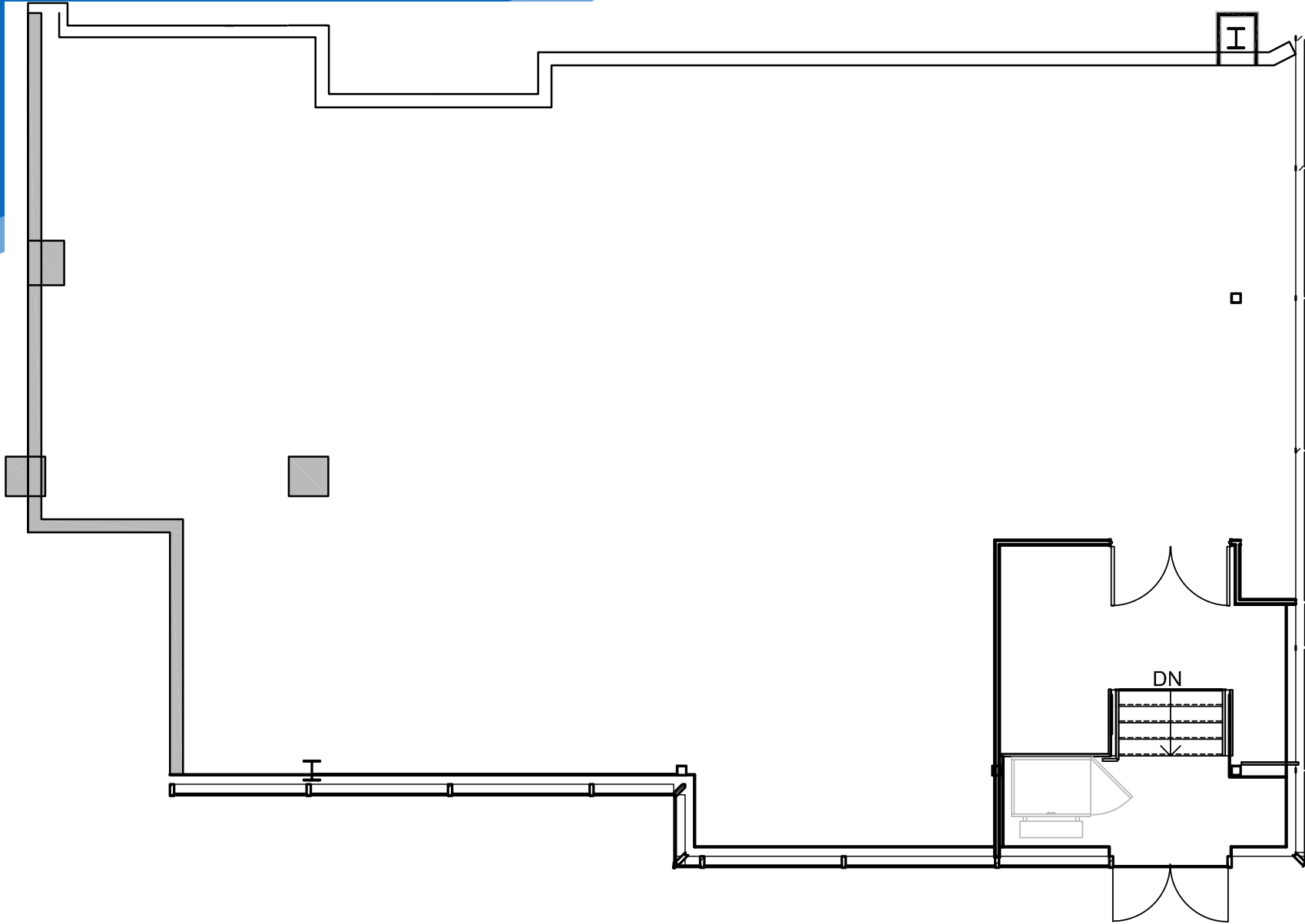
All information supplied is from sources deemed reliable and is furnished subject to errors, omissions, modifications, removal of the listing from sale or lease, and to any listing conditions, including the rates and manner of payment of commissions for particular offerings imposed by Meridian Capital Group. This information may include estimates and projections prepared by Meridian Capital Group with respect to future events, and these future events may or may not actually occur. Such estimates and projections reflect various assumptions concerning anticipated results. While Meridian Capital Group believes these assumptions are reasonable, there can be no assurance that any of these estimates and projections will be correct. Therefore, actual results may vary materially from these estimates and projections. Any square footage dimensions set forth are approximate.

# 665 COLUMBUS AVENUE

UPPER WEST SIDE, NYC | Corner of Columbus Avenue and West 92<sup>nd</sup> Street

RETAIL FOR LEASE

FLOOR PLAN



## JAMES FAMULARO

President  
646.658.7373  
jfamularo@meridiancapital.com

## JORDAN LANGER

Senior Associate  
212.468.5977  
jlanger@meridiancapital.com



**MERIDIAN**  
RETAIL LEASING

All information supplied is from sources deemed reliable and is furnished subject to errors, omissions, modifications, removal of the listing from sale or lease, and to any listing conditions, including the rates and manner of payment of commissions for particular offerings imposed by Meridian Capital Group. This information may include estimates and projections prepared by Meridian Capital Group with respect to future events, and these future events may or may not actually occur. Such estimates and projections reflect various assumptions concerning anticipated results. While Meridian Capital Group believes these assumptions are reasonable, there can be no assurance that any of these estimates and projections will be correct. Therefore, actual results may vary materially from these estimates and projections. Any square footage dimensions set forth are approximate.

# 665 COLUMBUS AVENUE

UPPER WEST SIDE, NYC | Corner of Columbus Avenue and West 92nd Street

RETAIL FOR LEASE



NEIGHBORS

### JAMES FAMULARO

President  
646.658.7373  
jfamularo@meridiancapital.com

### JORDAN LANGER

Senior Associate  
212.468.5977  
jlander@meridiancapital.com



**MERIDIAN**  
RETAIL LEASING

All information supplied is from sources deemed reliable and is furnished subject to errors, omissions, modifications, removal of the listing from sale or lease, and to any listing conditions, including the rates and manner of payment of commissions for particular offerings imposed by Meridian Capital Group. This information may include estimates and projections prepared by Meridian Capital Group with respect to future events, and these future events may or may not actually occur. Such estimates and projections reflect various assumptions concerning anticipated results. While Meridian Capital Group believes these assumptions are reasonable, there can be no assurance that any of these estimates and projections will be correct. Therefore, actual results may vary materially from these estimates and projections. Any square footage dimensions set forth are approximate.