



Property Description

Join Class A Office tenants like Enel and Accenture and the well-loved Neighborhood Jam restaurant in the Boulevard building.

The remaining office suite overlooks the historic Plaza Court building with views of the downtown skyline. Parking is available on site in the attached surface lot.

The suite is in shell condition, ready for Tenant's desired build out.

Property Highlights

- New construction Class A mixed-use building
- Sophisticated finishes in the common areas
- Panoramic view with generous windows
- Tenant Improvement Allowance available

Suite Details

Lease Rate:	\$24.00 SF/yr (NNN)
Number of Units Available:	1
Available SF:	3,012 SF
Building Size:	32,922 SF

Barta Bailey

BOULEVARD BUILDING | 525 NW 11TH STREET, OKC
OFFICE SUITE FOR LEASE

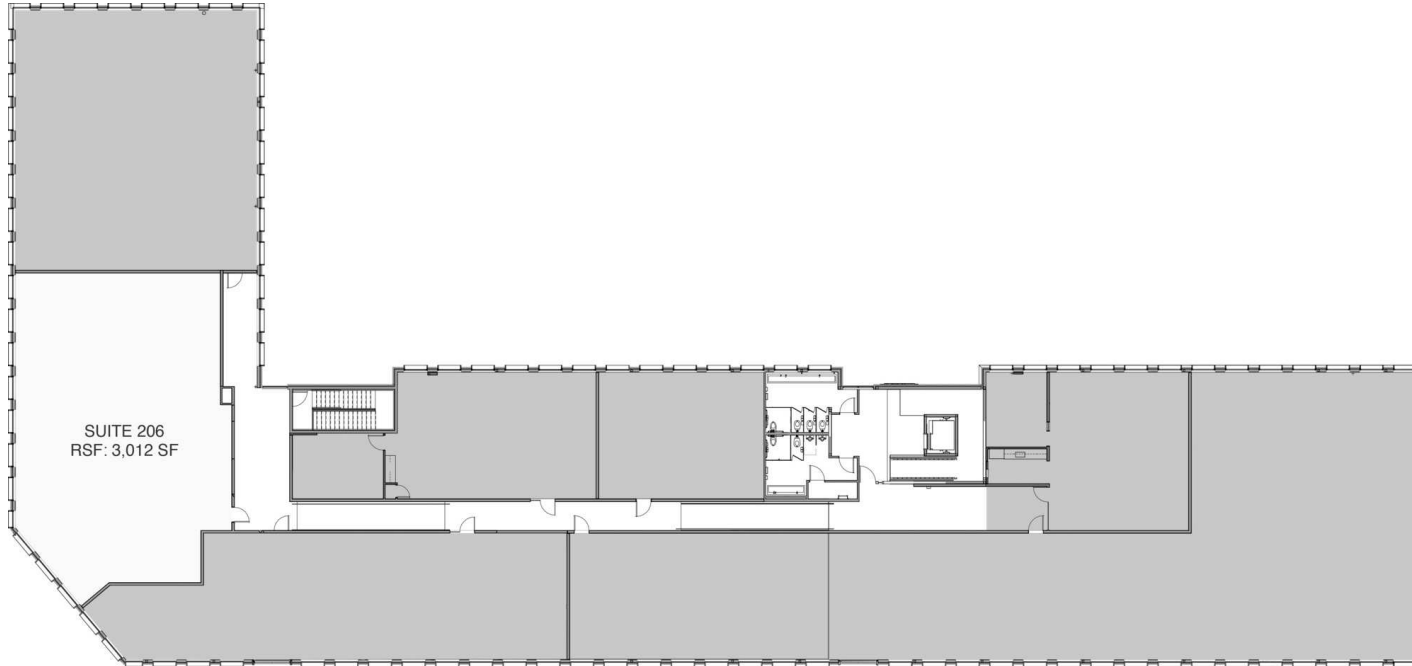


ALLISON BAILEY

405.620.3883

ALLISON@BARTABAILEY.COM

BARTABAILEY.COM



Available Spaces

Suite	Tenant	Size (SF)	Lease Type	Lease Rate	Description
525 NW 11th, Suite 206	Available	3,012 SF	NNN	\$24.00 SF/yr	2nd floor office suite with panoramic downtown skyline view. Shell space with access to finished restrooms and lobby.

Barta Bailey

BOULEVARD BUILDING | 525 NW 11TH STREET, OKC
OFFICE SUITE FOR LEASE

