

OFFICE SUITE FOR LEASE



1110 N Florida Ave, Tampa, FL 33602



Available Suites

- Suite **203**: 220 SF
- Suite **204**: 280 SF

Building Details

- Private, professional office suites in the heart of downtown Tampa, ideal for attorneys, consultants, and professional firms
- 24-hour access available
- Rooftop deck access
- Shared kitchen, conference room & gym with shower
- Excellent access to I-275, I-4 and Crosstown
- Centrally located: walk to courthouses, restaurants, The Riverwalk & Armature Works

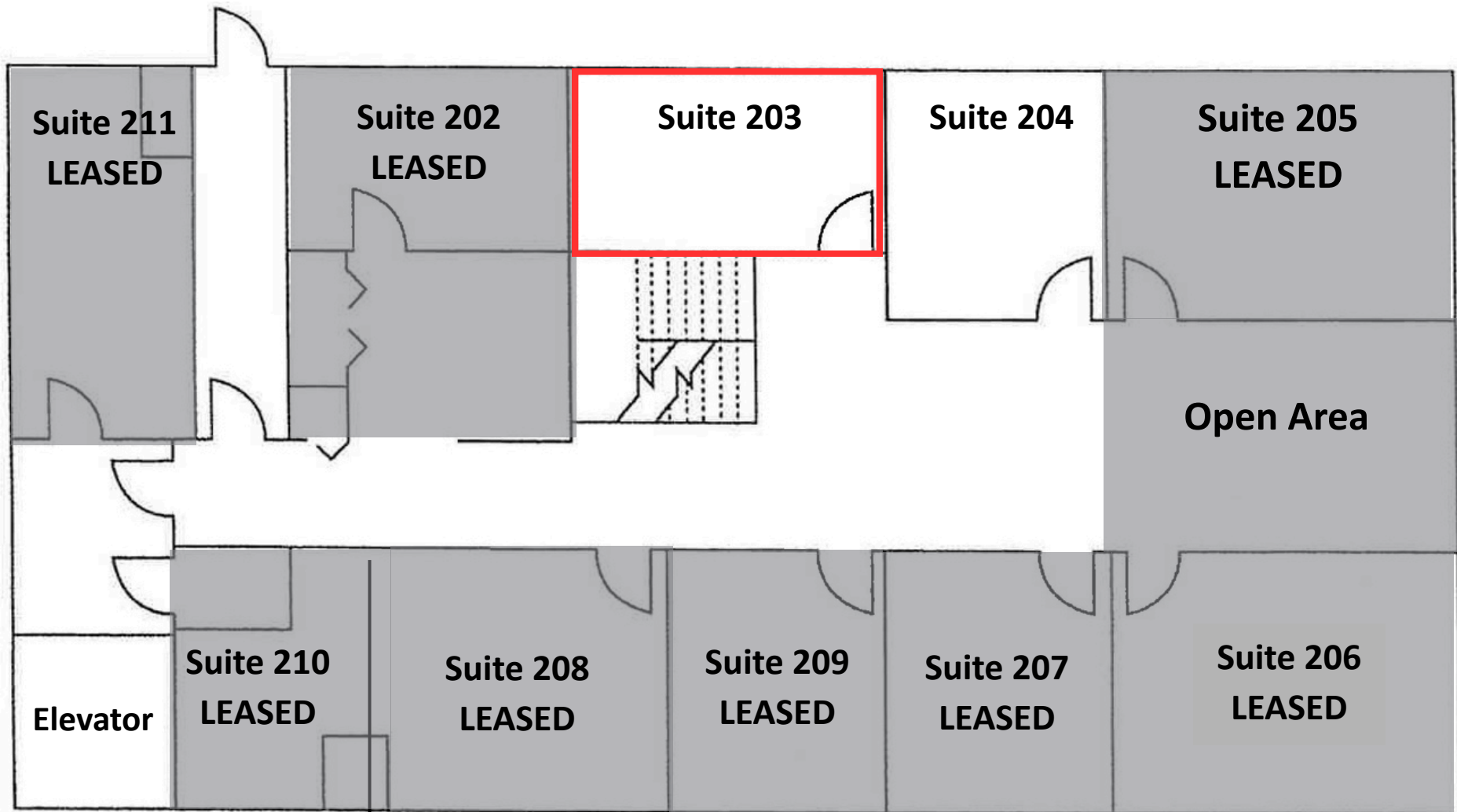


Abbey Ahern

Principal, Brokerage

813.416.7155

Abbey@DohringAhern.com



*NOT TO SCALE

1110 N Florida Ave, Tampa, FL 33602

Abbey Ahern

Principal, Brokerage

813.416.7155

Abbey@DohringAhern.com



Suite 203

VIRTUALLY STAGED *Rendering shown for visualization purposes only*



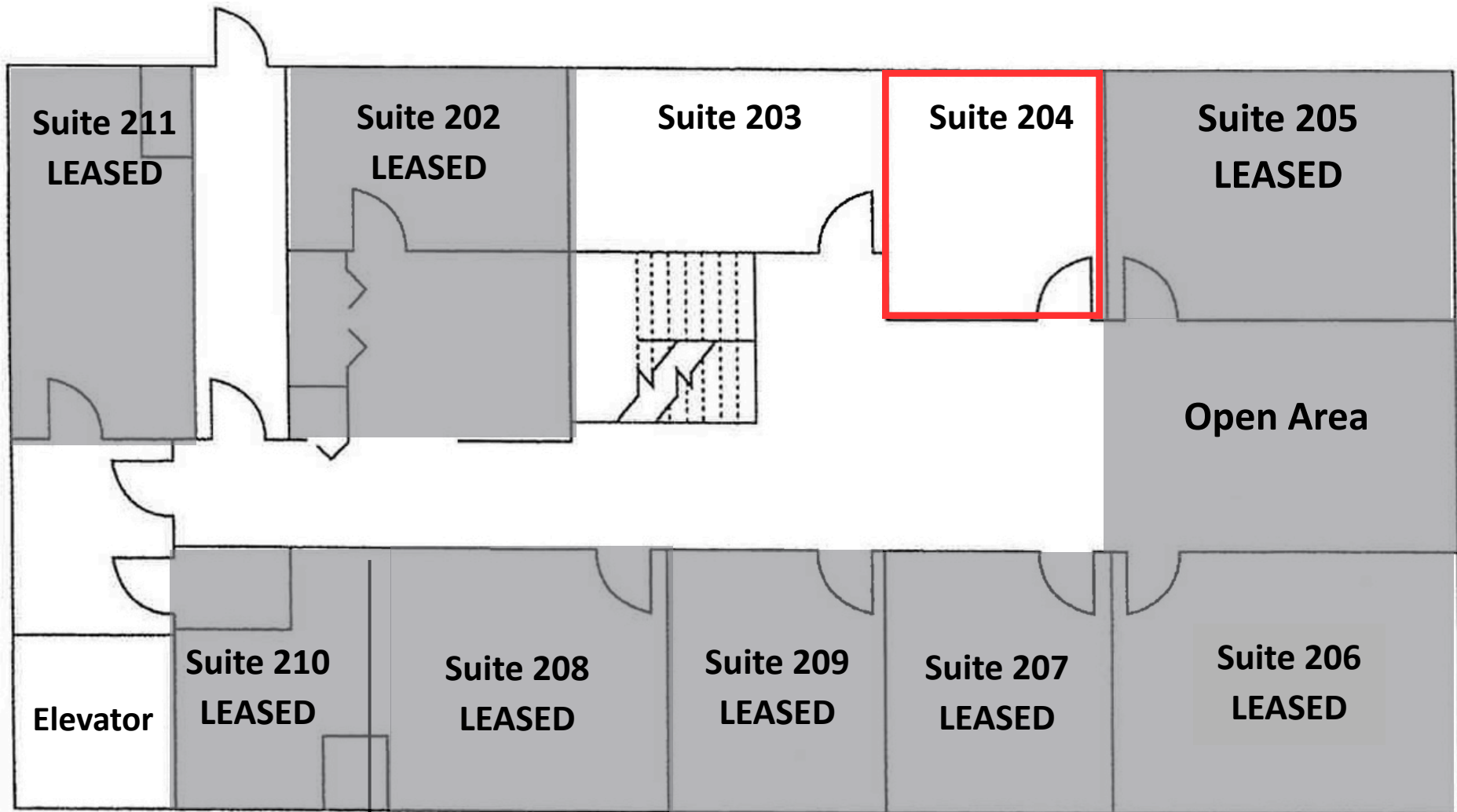
Abbey Ahern

Principal, Brokerage

813.416.7155

Abbey@DohringAhern.com





***NOT TO SCALE**

1110 N Florida Ave, Tampa, FL 33602

Abbey Ahern

Principal, Brokerage

813.416.7155

Abbey@DohringAhern.com



Suite 204

VIRTUALLY STAGED *Rendering shown for visualization purposes only*



Abbey Ahern

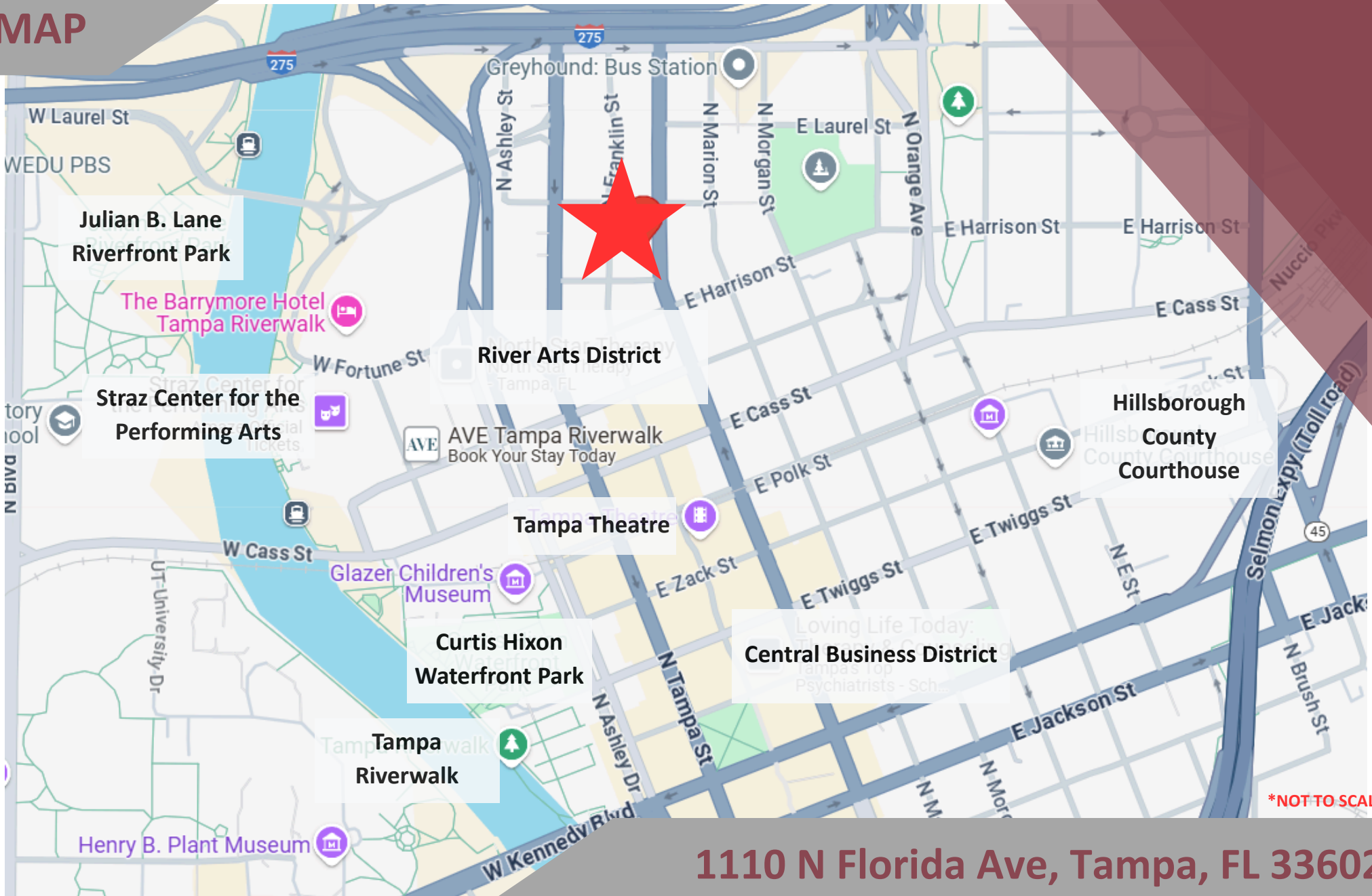
Principal, Brokerage

813.416.7155

Abbey@DohringAhern.com



MAP



Abbey Ahern

Principal, Brokerage

813.416.7155

Abbey@DohringAhern.com

