

FOR LEASE

700

SUSSEX DRIVE

OTTAWA, ONTARIO

CBRE

For Lease
Retail Space
Jamie Boyce • Tim Eberts
+1 613 782 2266
ottawa@cbre.com

SUSSEX DRIVE


Centrally located in Ottawa's Byward Market, this second floor unit is perfect for a wide variety of users. This impressive, light-filled unit, formerly a training center, is now available for lease! Easily accessible by stairs, elevator or escalator, this space boasts a warm reception area, a stylish kitchenette, and an abundance of natural light. Ideal for offices, conferences, or educational purposes, this versatile space is ready to be transformed to meet your specific needs. Event planners and food users will also love this space. Your employees will love working here.

This location is immediately surrounded by residents, offices, hotels, bars, restaurants, CF Rideau, and the Parliamentary Precinct. It provides easy access to numerous other amenities, public parking, Highway 417, and public transit including the Rideau LRT Station. Very centrally located, this is the epicentre of Ottawa's vibrant tourism hub. This location will only get better with the opening of the new Live Nation 2,000 person music and entertainment venue directly across the street, which is expected to open in early 2026. The space is available for immediate possession.


PROPERTY OVERVIEW

ADDRESS	Unit 200- 700 Sussex Dr, Ottawa, ON
TOTAL RENTABLE SF	8,800 SF
RENT	\$20 / psf.
ADDITIONAL RENT	\$25.03 / psf.


ACCESS AND AMENITIES




CF RIDEAU
CENTRE



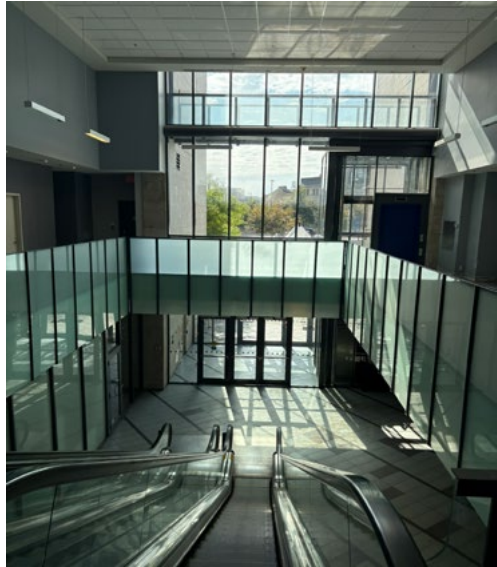
BYWARD
MARKET



RIDEAU
CANAL



FAIRMONT
CHATEAU LAURIER





BAYVIEW STATION

PIMISI STATION

LYON STATION

PARLIAMENT STATION

700 SUSSEX DRIVE

UOTTAWA STATION

RIDEAU LRT
2 MINUTE WALK | 100m

PARLIAMENT HILL
4 MINUTE WALK | 290m

ACCESS TO HIGHWAY 417
3 MINUTE DRIVE | 600m

BUS ROUTES

- 7 St. Laurent - Carleton
- 14 Tunney's - St. Laurent
- 15 Parliament - Blair
- 18 Rideau - St. Laurent

SUPREME COURT

MUSEUM OF CIVILIZATION

CENTRAL BUSINESS DISTRICT

PARLIAMENT HILL

NATIONAL GALLERY OF CANADA

CHATEAU LAURIER

AMERICAN EMBASSY

NATIONAL ARTS CENTRE

CONFERENCE CENTRE

BYWARD MARKET

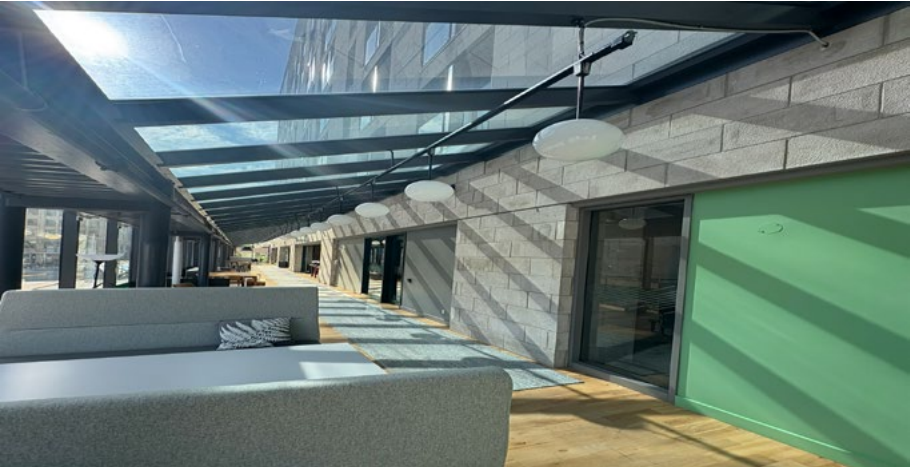
CITY HALL

RIDEAU CENTRE

UNIVERSITY OF OTTAWA

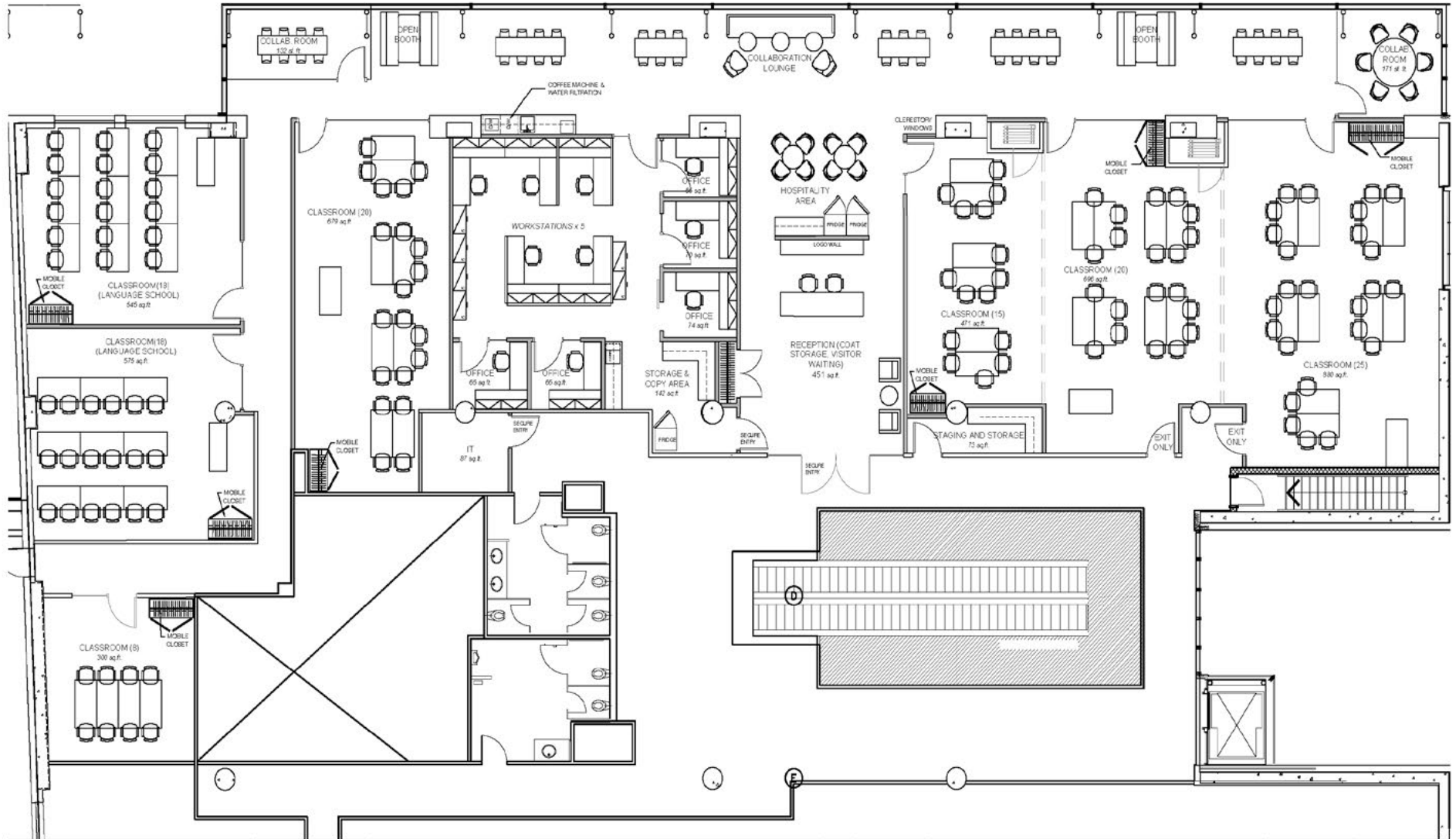
RETAILERS ALONG RIDEAU STREET

INTERIOR PHOTOS



FLOOR PLAN

SECOND FLOOR



Architecture and Interior Design

seal

PROVENCHER_ROY

PROVENCHER ROY INTERIOR DESIGN INC. | 613 886.6539

project
 CLARIDGE HOMES
 ALGONQUIN COLLEGE EXECUTIVE TRAINING
 drawing title
 PRELIMINARY SPACE PLAN

project number 190135	date 2019-04-26
scale 1/16" = 1'-0"	reference 000
drawn by	drawing number



700 SUSSEX DRIVE

JAMIE BOYCE*

Senior Vice President

+1 613 788 2747

jamie.boyce@cbre.com

TIM EBERTS*

Associate Vice President

+1 613 691 2138

tim.eberts@cbre.com

CBRE LIMITED REAL ESTATE BROKERAGE | 340 ALBERT STREET, SUITE 1900 | OTTAWA, ON | K1R 7Y6 | T: +1 613 782 2266 | W: WWW.CBRE.CA/OTTAWA | *SALES REPRESENTATIVE

© 2025 CBRE, Inc. All rights reserved. This information has been obtained from sources believed reliable but has not been verified for accuracy or completeness. CBRE, Inc. makes no guarantee, representation or warranty and accepts no responsibility or liability as to the accuracy, completeness, or reliability of the information contained herein. You should conduct a careful, independent investigation of the property and verify all information. Any reliance on this information is solely at your own risk. CBRE and the CBRE logo are service marks of CBRE, Inc. All other marks displayed on this document are the property of their respective owners, and the use of such marks does not imply any affiliation with or endorsement of CBRE. Photos herein are the property of their respective owners. Use of these images without the express written consent of the owner is prohibited.

CBRE