

AVAILABLE WEST END OFFICE SPACE

Up to 42,774 square feet available

EXCLUSIVE LISTING

FOR LEASE



9881 MAYLAND DRIVE

RICHMOND, VA 23223

 **\$21 SF/FULL SERVICE**

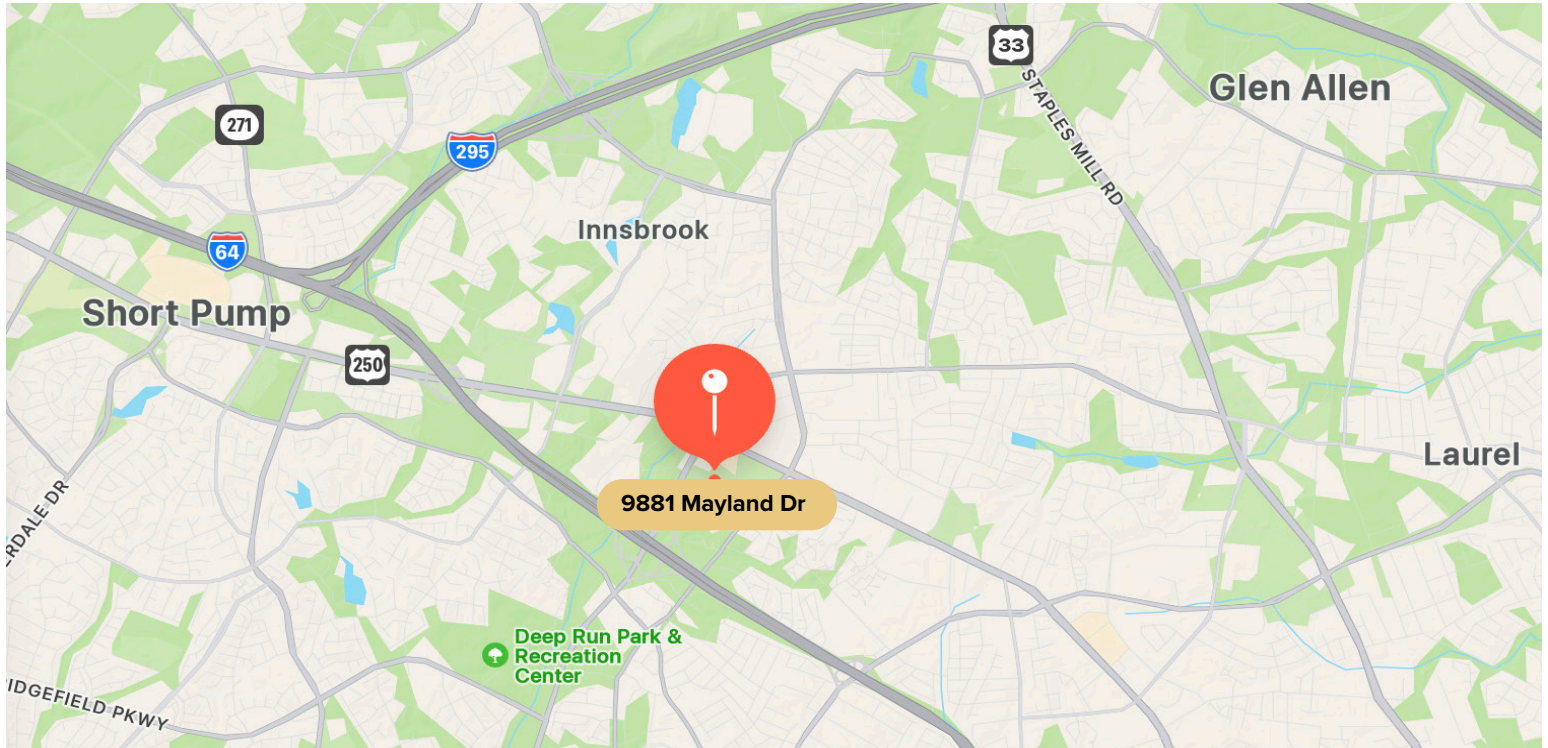
PROPERTY HIGHLIGHTS

- ✓ Excellent access to I-64 and Broad
- ✓ New building exterior potential
- ✓ Planned lobby and restroom renovation
- ✓ Ample parking (approximately 4:1,000 SF)

20 08
**ONE SOUTH
COMMERCIAL**

CHRIS CORRADA | 804.833.7909
chris.corrada@onesouthcommercial.com

KEN CAMPBELL | 804.387.8812
ken.campbell@onesouthcommercial.com



One South Commercial is pleased to present for lease the office building located at 9881 Mayland Drive.

Formerly owned and occupied by CVS/Aetna, this building is available immediately for a new tenant or tenants. Located off Gaskins Road at the corner of Mayland Drive and Mayland Court, this two-story building constructed in 1991 features two very efficient floor plates of 21,000 +/- square feet.

The planned renovations include an enlarged lobby, new bathrooms and exterior improvements. It's perfect for a single tenant or could be subdivided into smaller suits. A large first occupier will have the ability to work with the Landlord and influence the improvements. The building includes a loading dock with a roll-up door providing easy accessibility for all deliveries.

Located in the highly sought-after Innsbrook submarket on an approximate 2.82-acre parcel, this building provides ample parking with approximately 170 spaces (4 per 1,000 sf +/-) on site. There are numerous retail and dining options nearby. I-64 is less than a half mile away.

QUICK FACTS

ADDRESS | 9881 Mayland Drive,
Richmond, VA 23223

PID | 752-757-8975

ZONING | M-1C

LOT SIZE | 2.82 AC

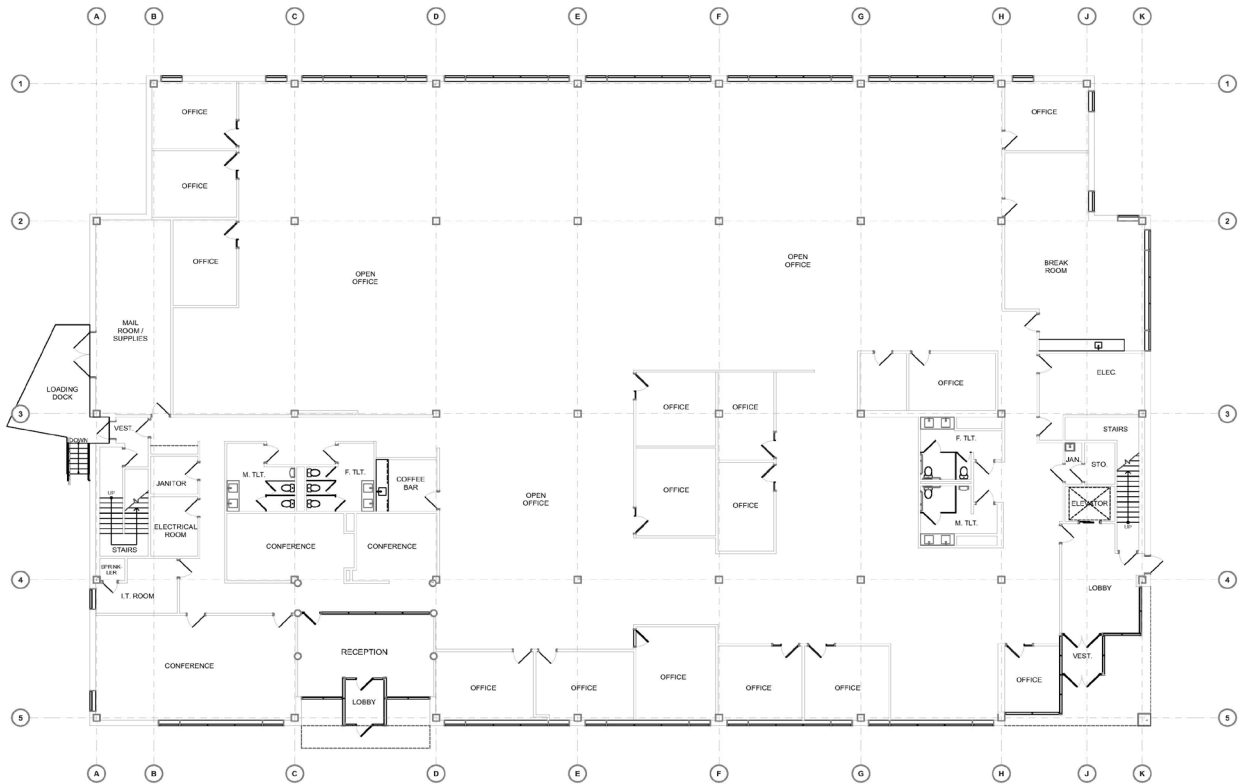
GBA | 9,000-42,774 SF

YEAR BUILT | 1991

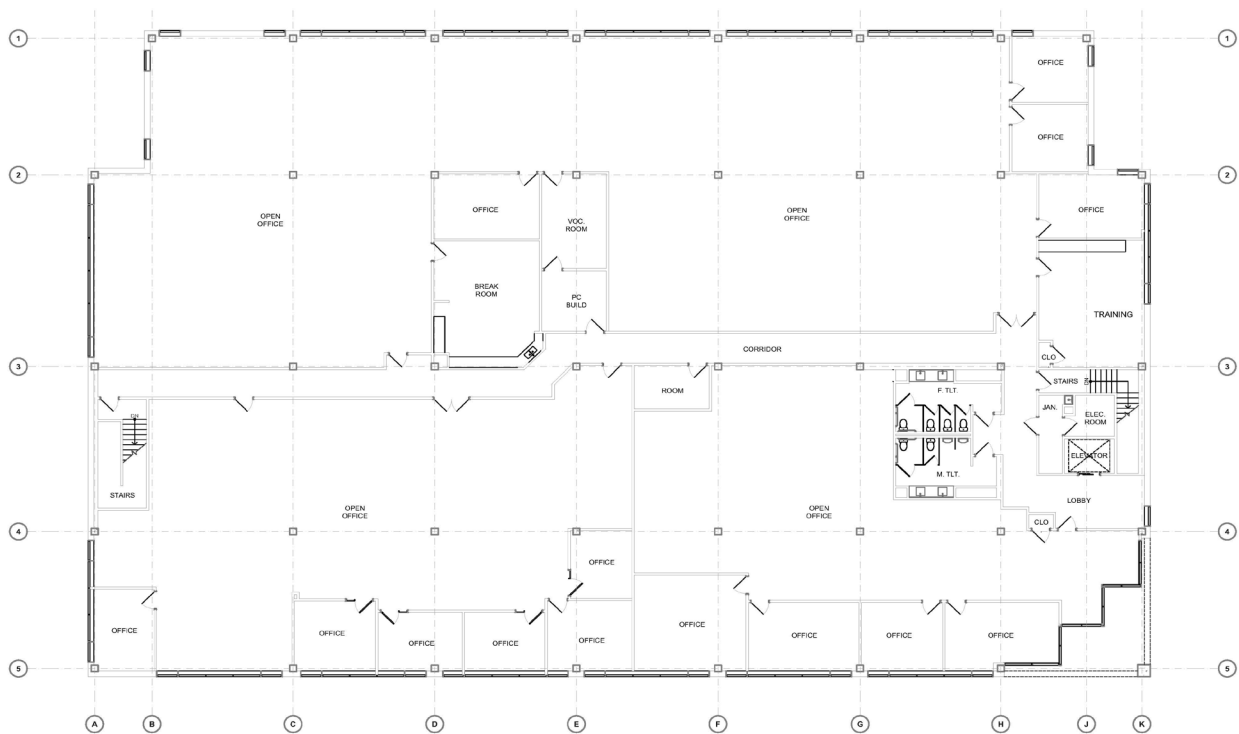
LEASE PRICE | \$21 PSF/Full Service



FIRST FLOOR



SECOND FLOOR





ONE SOUTH COMMERCIAL is a CoStar PowerBroker in the Richmond, VA investment sales market. Our reputation among those with local knowledge as the premier investment sales shop in the City of Richmond is built on a wide network of relationships with principals all over the world who trust us and our ability to effectively analyze the economics of any deal and represent them honestly.

CONTACT



CHRIS CORRADA | 804.833.7909
chris.corrada@onesouthcommercial.com



KEN CAMPBELL | 804.387.8812
ken.campbell@onesouthcommercial.com

