

# 600

WEST 7TH STREET  
LOS ANGELES, CA

## RETAIL | RESTAURANT SPACES FOR LEASE



*Join Nearby Retailers:*

Sugarfish, Joey, Bottega Louie, and Whole Foods



## HIGHLIGHTS

- Class B office building consisting of 489,722 SF of space
- Centrally located in Financial District, with close proximity to South Park and Historic Core
- Great pedestrian foot traffic in an extremely walkable neighborhood
- Walking distance to hundreds of retail, dining, and cultural destinations
- Nearby retailers: Sugarfish, Joey, Whole Foods, and Bottega Louie

## AVAILABLE SUITES

SUITE	SF	SPACE
115	±2,682 SF	Raw space
120	±1,096 SF	Former Eatgud
160	±1,904 SF	Former Jimmy John's
170	±5,165 SF	Former Le Grand Restaurant

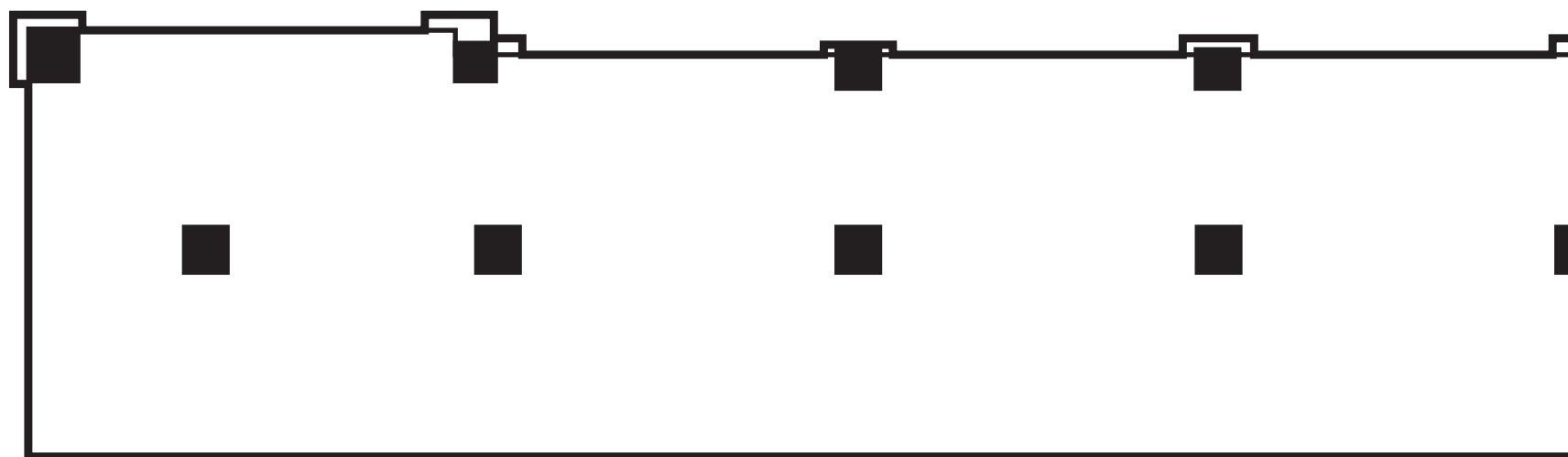
# AVAILABLE SUITE

SUITE #115  
±2,682 SF

# FLOOR PLAN



SUITE 115 | ±2,682 SF



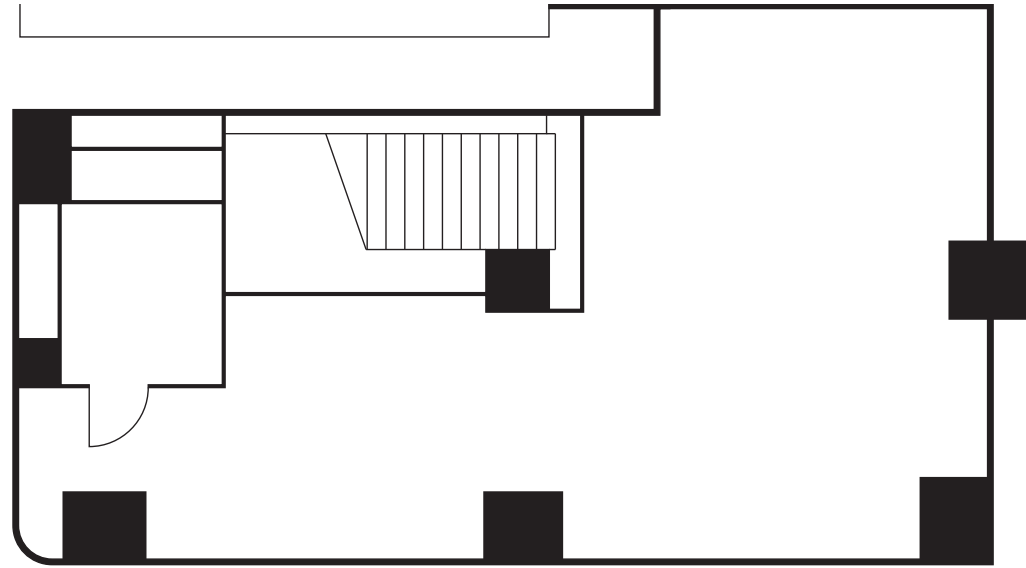
7TH STREET

HOPE STREET

# FLOOR PLAN

## AVAILABLE SUITE

SUITE #120  
±1,096 SF



7TH STREET

SUITE 120 | ±1,096 SF



# AVAILABLE SUITE

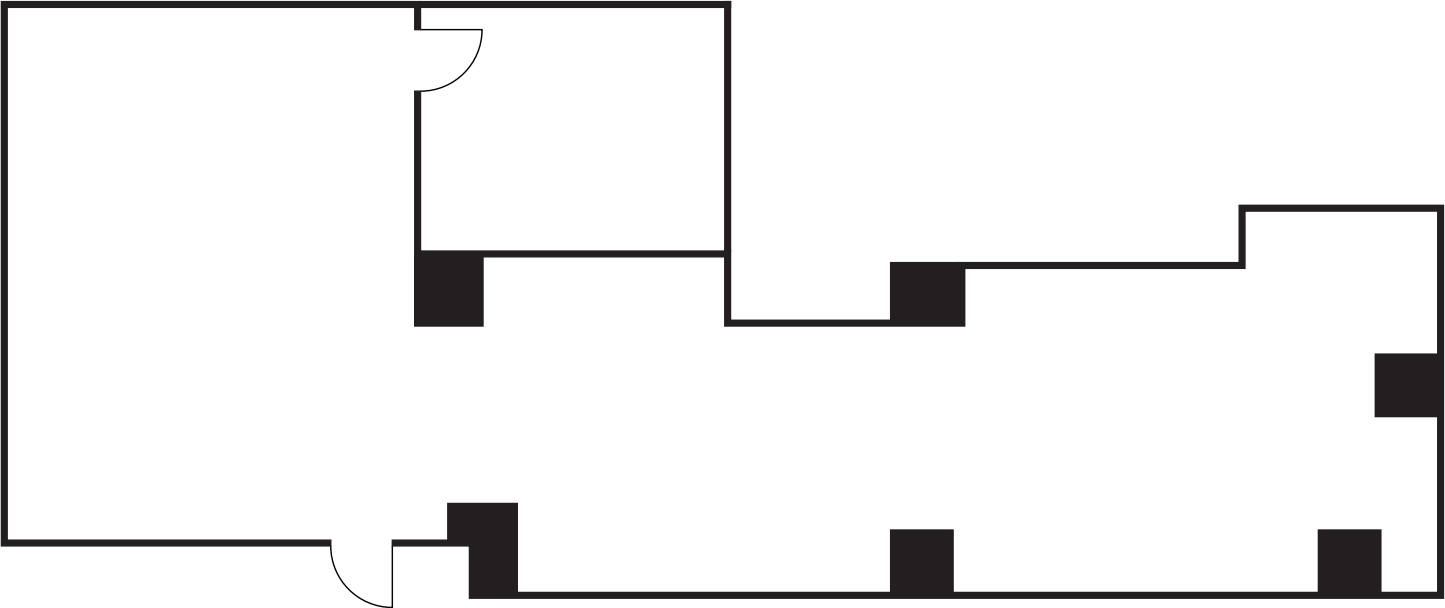
SUITE 160 | ±1,904 SF



SUITE 160 | ±1,904 SF

# FLOOR PLAN

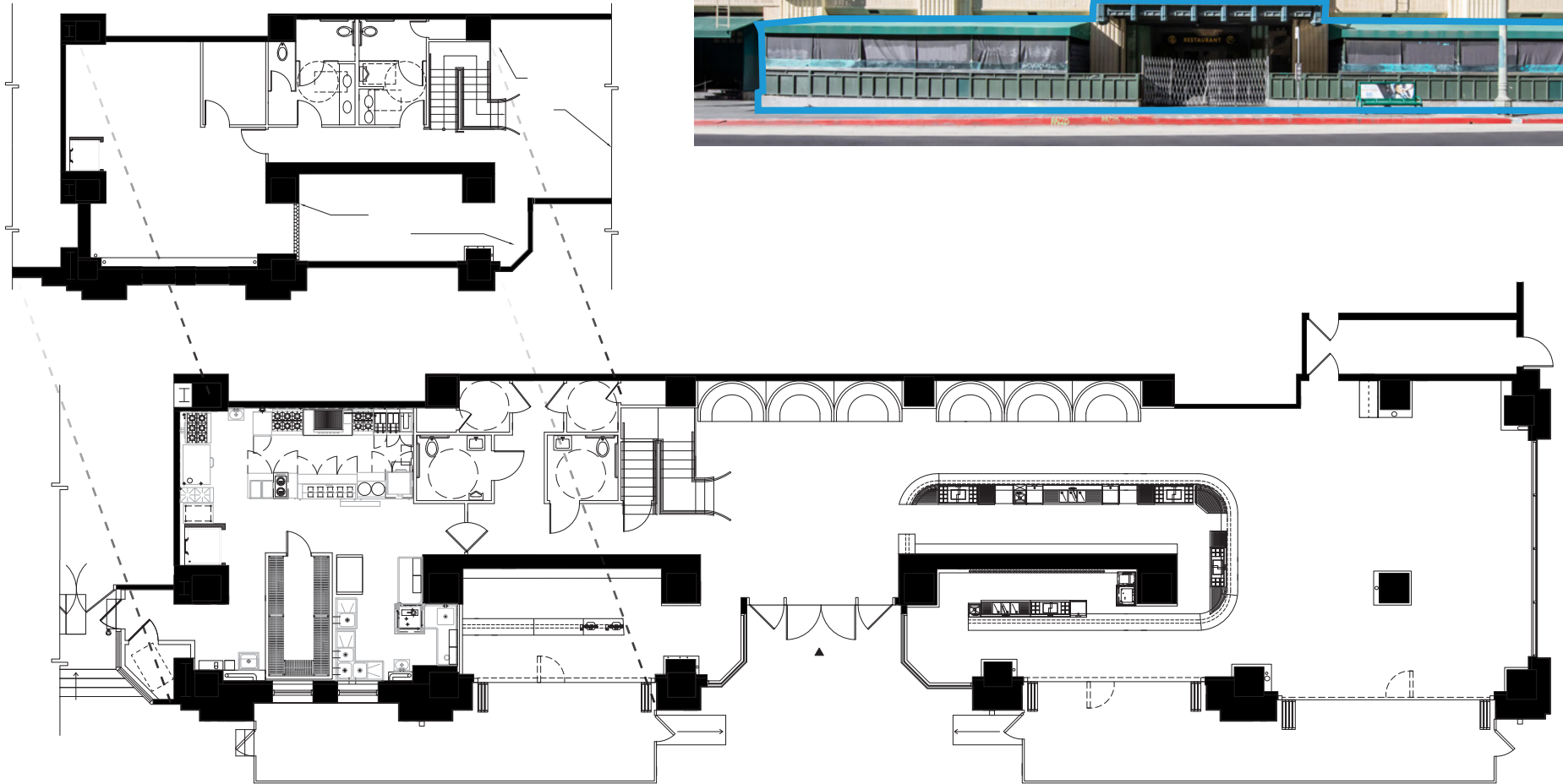
SUITE 160 | ±1,904 SF



7TH STREET

# FLOOR PLAN

SUITE 170 | ±5,165 SF



S GRAND AVENUE

7TH STREET



# DTLA HIGHLIGHTS

- Apartment occupancy rate: 89.5%
- 4,584 residential apartments under construction with 31,807 proposed
- 3,022 hotel rooms under construction with 7,379 proposed
- Approximately 3,000,000 SF of office space is currently under construction
- Easily reachable by public transportation, including close proximity to the 7th St/Metro Center station

# AREA OVERVIEW

**600 W. 7TH STREET** is situated in the heart of Downtown LA in the bustling Financial District. Thousands of new residential units have recently opened in the area, creating the perfect blend of daytime and evening traffic. This neighborhood has transformed into one of Downtown's hottest districts, with many new retailers, restaurants, business, and hotels opening.



# DTLA DEMOGRAPHICS



**80,000+**  
Residents



**500,000**  
Weekday population



**\$100k+**  
Median Income



**36 years old**  
Median Age

# 600

600 WEST 7TH STREET, LOS ANGELES, CA

**Derrick Moore**

Lic. 01029938

derrick.moore@cbre.com

**Shiho Takei Moore**

Lic. 02224981

shiho.moore@cbre.com

**Diandra Dillon**

Lic. 02210049

diandra.dillon@cbre.com



CALL +1 213 613 3272

**CBRE**

©2026 CBRE, Inc. All rights reserved. This information has been obtained from sources believed reliable, but has not been verified for accuracy or completeness. You should conduct a careful, independent investigation of the property and verify all information. Any reliance on this information is solely at your own risk. CBRE and the CBRE logo are service marks of CBRE, Inc. All other marks displayed on this document are the property of their respective owners, and the use of such logos does not imply any affiliation with or endorsement of CBRE. Photos herein are the property of their respective owners. Use of these images without the express written consent of the owner is prohibited.