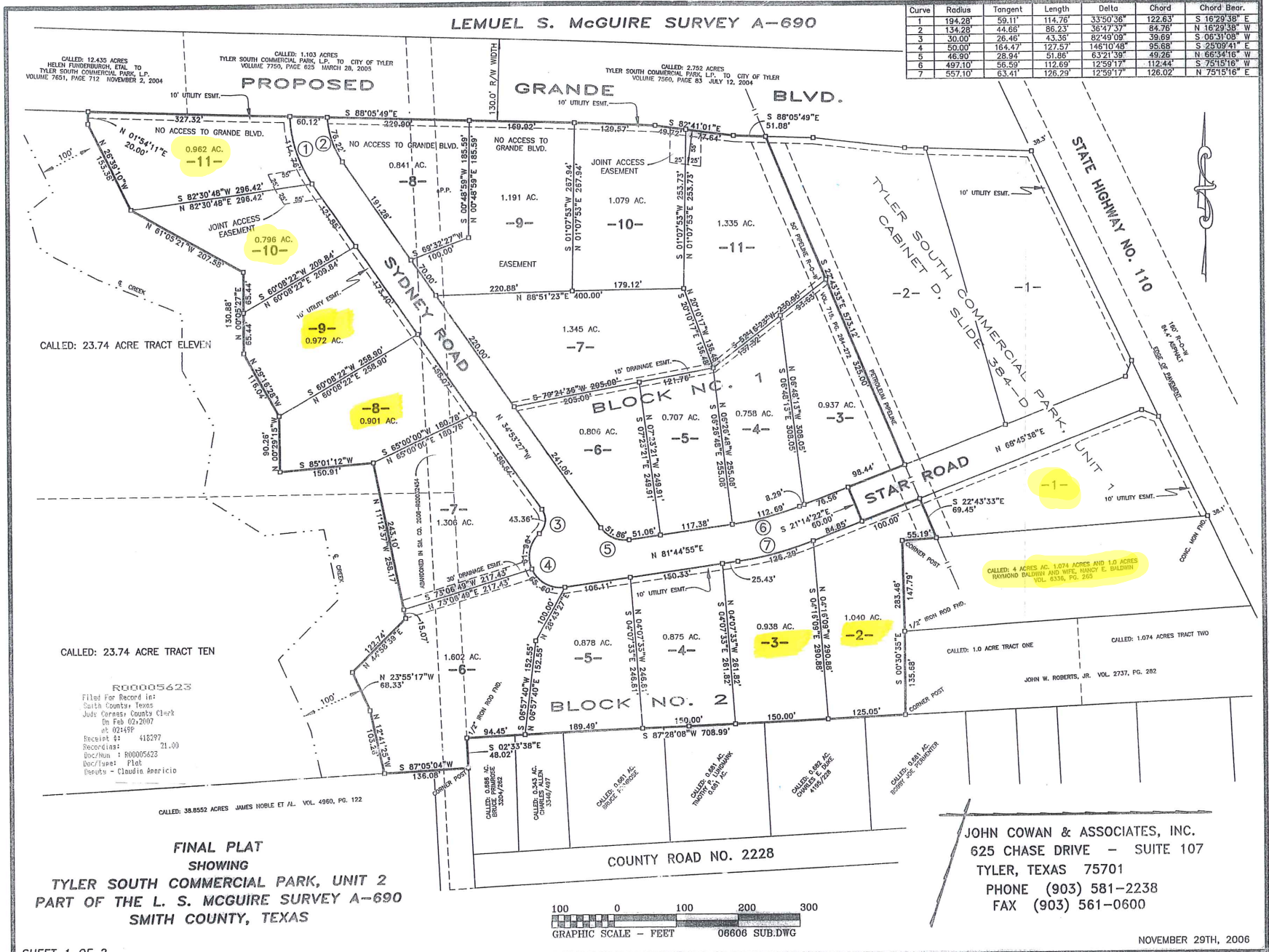


LEMUEL S. MCGUIRE SURVEY A-690

Curve	Radius	Tangent	Length	Delta	Chord	Chord Bear.
1	194.28'	59.11'	114.76'	33°50'36"	122.63'	S 16°29'38" E
2	134.28'	44.66'	86.23'	36°47'37"	84.78'	N 16°29'38" W
3	30.00'	26.46'	43.36'	82°49'09"	39.69'	S 06°31'08" W
4	50.00'	164.47'	127.57'	146°10'48"	95.68'	S 25°09'41" E
5	46.90'	28.94'	51.86'	63°21'39"	49.26'	N 66°34'16" W
6	492.10'	56.53'	112.69'	12°59'17"	112.44'	S 75°15'16" W
7	557.10'	63.41'	126.29'	12°59'17"	126.02'	N 75°15'16" E



CALLED: 12.435 ACRES
HELEN RUDENBERG, ET AL TO
TYLER SOUTH COMMERCIAL PARK, L.P.
VOLUME 7651, PAGE 712 NOVEMBER 2, 2004

CALLER: 1.103 ACRES
TYLER SOUTH COMMERCIAL PARK, L.P. TO CITY OF TYLER
VOLUME 7750, PAGE 625 MARCH 28, 2005

CALLER: 2.762 ACRES
TYLER SOUTH COMMERCIAL PARK, L.P. TO CITY OF TYLER
VOLUME 7560, PAGE 83 JULY 12, 2004

CALLED: 23.74 ACRE TRACT ELEVEN

CALLED: 23.74 ACRE TRACT TEN

R00005623
Filed For Record in:
Smith County, Texas
Judge Cornejo County Clerk
On Feb 02, 2007
at 02:49P
Record # 418297
Record # 21,00
Doc/Map # R00005623
Doc/Map # Plat
Book # Claudia America

CALLER: 38.8552 ACRES JAMES NOBLE ET AL VOL. 4950, PG. 132

CALLER: 4 ACRES AC. 1.074 ACRES AND 1.0 ACRES
RAYMOND DALRYMPH AND WIFE, NANCY E. DALRYMPH
VOL. 6336, PG. 263

CALLER: 1.0 ACRE TRACT ONE

CALLER: 1.074 ACRES TRACT TWO

JOHN W. ROBERTS, JR. VOL. 2737, PG. 282

JOHN COWAN & ASSOCIATES, INC.
625 CHASE DRIVE - SUITE 107
TYLER, TEXAS 75701
PHONE (903) 581-2238
FAX (903) 561-0600

