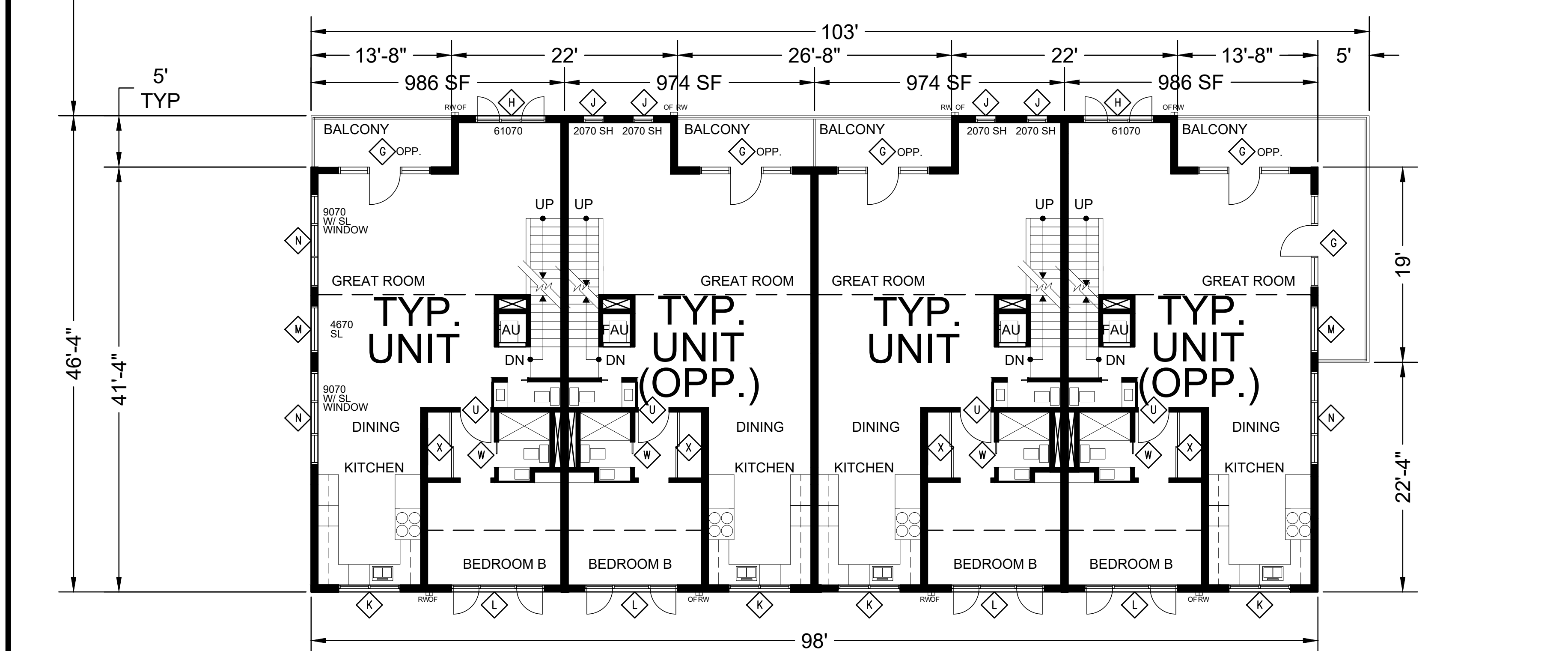
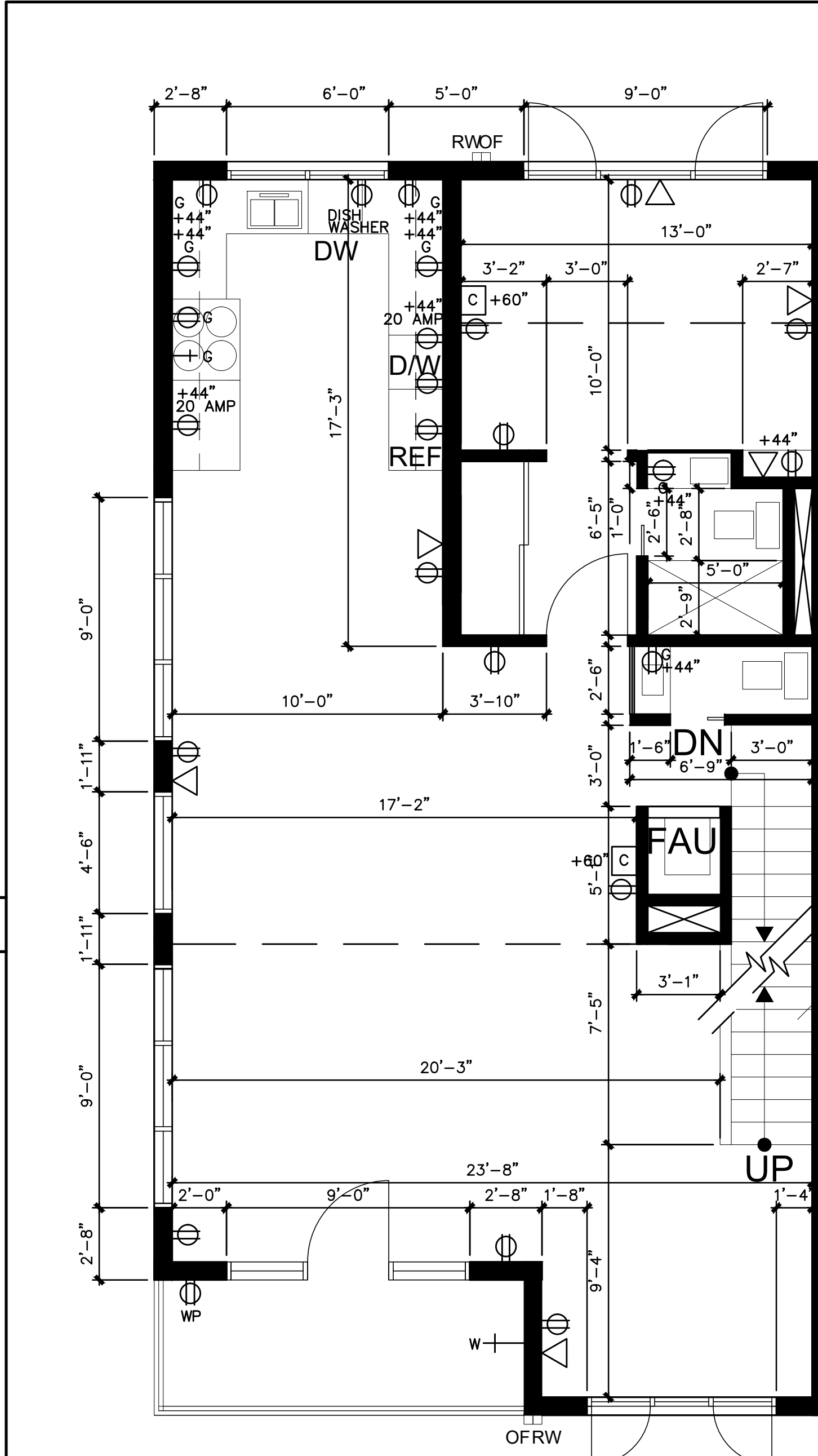


1 2ND FLOOR PLAN - BUILDING A
SCALE: 1/8" = 1'-0"



2 2ND FLOOR PLAN - BUILDING B
SCALE: 1/8" = 1'-0"



3 2ND FLOOR PLAN - TYPICAL UNIT
SCALE: 1/4" = 1'-0"

SECURITY NOTES

1. EXTERIOR DOORS, DOORS BETWEEN HOUSE AND GARAGE, WINDOWS AND THEIR HARDWARE SHALL CONFORM TO THE SECURITY
 - A. SINGLE SWINGING DOORS, ACTIVE LEAF OR A PAIR OF DOORS, AND THE BOTTOM LEAF OF DUTCH DOORS SHALL BE EQUIPPED WITH A LATCH AND A DEADBOLT KEY OPERATED FROM THE OUTSIDE. DEADBOLTS SHALL HAVE A HARDENED INSERT WITH MINIMUM 1-IN. THROW AND 5/8-IN. EMBEDMENT INTO THE JAMB. IF A LATCH HAS A KEY-LOCKING FEATURE, IT SHALL BE A DEAD LATCH TYPE.
 - B. INACTIVE LEAF OF A PAIR OF DOORS OR UPPER LEAF OF DUTCH DOORS SHALL HAVE A DEADBOLT AS PER THE PARAGRAPH "A" NOT A KEY OPERATED, OR HARDENED DEADBOLT AT TOP AND BOTTOM WITH 1/2-IN. EMBEDMENT.
 - C. SWINGING WOOD DOOR(S) SHALL BE SOLID CORE NOT LESS THAN 1-3/8-IN. THICK.
 - D. PANELS OF WOOD DOORS SHALL BE 1-3/8-IN. THICK AND NOT MORE THAN 300 SQ. INCHES. STILES AND RAILS TO BE 1-3/8-IN. THICK AND 3-IN. MINIMUM WIDTH.
 - E. DOOR HINGE PINS ACCESSIBLE FROM THE OUTSIDE SHALL BE NON-REMOVABLE.
 - F. DOORSTEPS OF WOOD JAMBS OF IN-SWINGING DOORS SHALL BE ONE-PIECE CONSTRUCTION OR JOINED BY A RABBIT.
 - G. GLAZING WITHIN 40-IN. OF THE LOCKING DEVICE OF THE DOOR SHALL BE FULLY TEMPERED / APPROVED. (6714)
 - H. OVERHEAD AND SLIDING GARAGE DOORS SHALL BE SECURED WITH A CYLINDER LOCK. A PADLOCK WITH A HARDENED STEEL SHACKLE, OR EQUIVALENT WHEN NOT OTHERWISE LOCKED BY ELECTRIC POWER OPERATION. JAMB LOCKS SHALL BE ON BOTH JAMBS FOR DOORS EXCEEDING 9-FT. IN WIDTH. (6711)
 - I. SLIDING GLASS DOORS AND SLIDING GLASS WINDOWS SHALL BE CAPABLE OF WITHSTANDING THE TESTS SET FORTH IN SECTION 6706 AND 6707 AND SHALL BEAR FORCED-ENTRY-RESISTANT LABELS. (6710, 6715)

GENERAL NOTES

A SEE SHEET A2.01 FOR GENERAL NOTES

LEGEND

- NEW DOOR / WINDOW
- NEW SLIDING DOOR WITH MIRROR @ BEDROOM
- NEW WALL
- EXTERIOR WALL - SEE 5/A9.01 (SEE 1/A9.04 FOR FIRE RATED END CONDITION) (SEE 1/A9.03 FOR 10HR FIRE RATED PENETRATION)
- INTERIOR WALL - SEE 1/A9.02 (SEE 6/A9.02 FOR SOUND REDUCTION DETAIL) (SEE 3/A9.03 FOR TILE WAINSCOT DETAIL) (SEE 3/A9.04 FOR MECH SHAFT)
- NEW TOILET
- NEW LAVATORY AND COUNTER
- ELECTRICAL STOVE & OVEN
- NEW TUB
- NEW SHOWER
- SINK AND DISHWASHER
- SEE ELECTRICAL DWG FOR ELECTRICAL OUTLET
- DUPLEX TELE-COMMUNICATION OUTLET WITH CAT 6E
- WALL MOUNTED RAINWATER LEADER - SEE 4/A9.00
- WALL MOUNTED OVERFLOOR RAINWATER LEADER - SEE 4/A9.00

APPROVAL STAMP

KIVA# 17-1132; SCMJ# 180059
APPLICATION: LPRN 1706872



Any specifications are the property of Archi Studio, LLP. These documents may not be copied, reproduced, used or implemented in any way, in part or in whole, without the written consent of Archi Studio, LLP. All common law rights of copyright are hereby specifically reserved.

XX.XX.2017	PLANNING REVIEW
06.01.2017	CLIENT REVIEW
06.11.2017	PLANNING REVIEW
07.12.2017	PLANNING REVIEW
12.28.2017	CITY SET
03.30.2018	1ST RESUBMISSION

BUILDING OWNER
GBC DEVELOPMENT LLC
11830 N 28TH DRIVE
PHOENIX, AZ 85029
T: 213.748.2400
CONTACT: JACOB CARUTHERS

ARCHITECT
ARCHIT STUDIO
318 WESTLAKE CTR, SUITE 286
DALY CITY, CA 94015
T: 650.270.1754
CONTACT: MARCO FUNG

CIVIL ENGINEERING
TOM HAVES
859 N. LAFFEYETTE DRIVE,
MEZA, AZ 85201
T: 480.201.5476

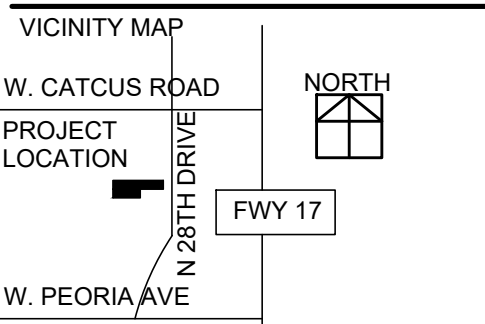
LANDSCAPE ARCHITECT
WAIBEL & ASSOCIATES
LANDSCAPE ARCHITECTURE
8611 ST. PRIEST DRIVE, SUITE 101
TEMPE, AZ 85284
T: 480.893.3849
CONTACT: RYAN MAVES

STRUCTURAL ENGINEERING
JRJ ENGINEERING, PLLC
2111 E. BASELINE ROAD, SUITE F6
TEMPE, AZ 85283
T: 480.734.9262
CONTACT: JAMES JONES

MEP ENGINEERING
INGENIUM DESIGN
20701 N SCOTTSDALE ROAD
SUITE 107-614
SCOTTSDALE, AZ 85255
O: 480.419.6450
CONTACT: LISA KOCH

FIRE PROTECTION ENGINEERING
1505 W UNIVERSITY DR., SUITE 101
TEMPE, AZ 85281
O: 206.780.8426
CONTACT: GARY MCDANIEL

NEW APARTMENT
11830 NORTH 28TH DRIVE,
PHOENIX, AZ 85029
APN: 149-63-720



Date: 2017.02.26
Project No.: 2017.049

Sheet Title: FLOOR PLAN 2ND FLOOR

Sheet No.: A2.02

Released for Construction
 Not Released for Construction