

# Mayfair Health Professional Building

3077 N Mayfair Road  
Wauwatosa, WI

Medical, Medtail, and  
Office Space for Lease



For more information please contact:

**Tim Janusz**  
414-908-9155  
tim.janusz@nmrk.com

**Rachel Schmidt, CCIM**  
414-395-4691  
rachel.schmidt@nmrk.com

**NEWMARK**



**ATHLETICO**  
PHYSICAL THERAPY

**MDI** MEDICAL  
DIAGNOSTIC  
IMAGING

Orthopedic Institute of Wisconsin

**MD**   
**Hyperbaric**



## PROPERTY SUMMARY

**±54,071 SF**  
BUILDING  
SIZE

**172**  
PARKING  
SPACES

**Up To ±18,000 RSF**  
2ND FLOOR SPACE AVAILABLE STARTING  
2026

**Up To ±14,157 RSF**  
3RD FLOOR SPACE AVAILABLE

**Negotiable**  
LEASE RATE

**\$13.55**  
OPEX RATE

**Monument and Building Façade**  
SIGNAGE



---

## Property Highlights



Three-story building with opportunity for various medical uses and first floor Medtail at the outstanding corner location of Mayfair & Burleigh



Immediate availability for first and third floor suites



Professionally managed with numerous amenities steps away along Mayfair Road or at the Mayfair Collection



Close proximity to many hospitals and the Milwaukee Regional Medical Center



Updated common areas, new monument and wayfinding signage along with convenient Interstate access

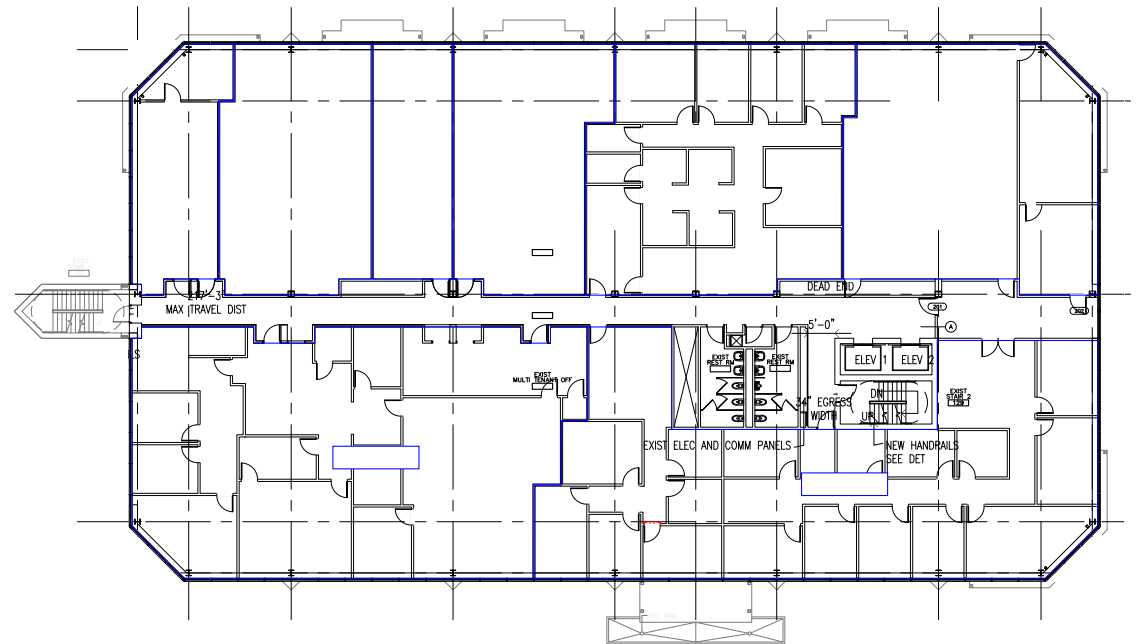


Tenant Improvement Allowance available with flexible terms

## 2ND FLOOR

# CONTACT BROKER

Existing Suites from 771 RSF to 4,264 RSF  
Can accommodate tenants up to ±18,000 RSF



# NEWMARK

## 3RD FLOOR

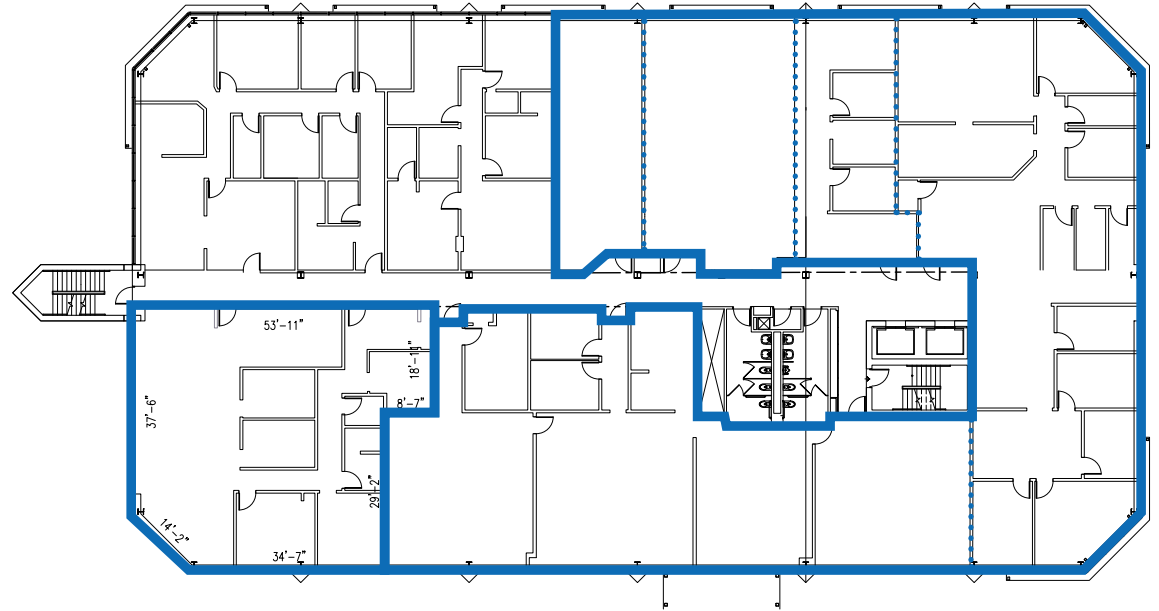
± 2,584 RSF  
± 11,573 RSF

Suites 303 and 306  
Contiguous to 14,157 RSF

Suite 306 currently has a clinical medical  
buildout

Suite 303 can be divided into a variety of  
suite sizes and buildouts

**NEWMARK**

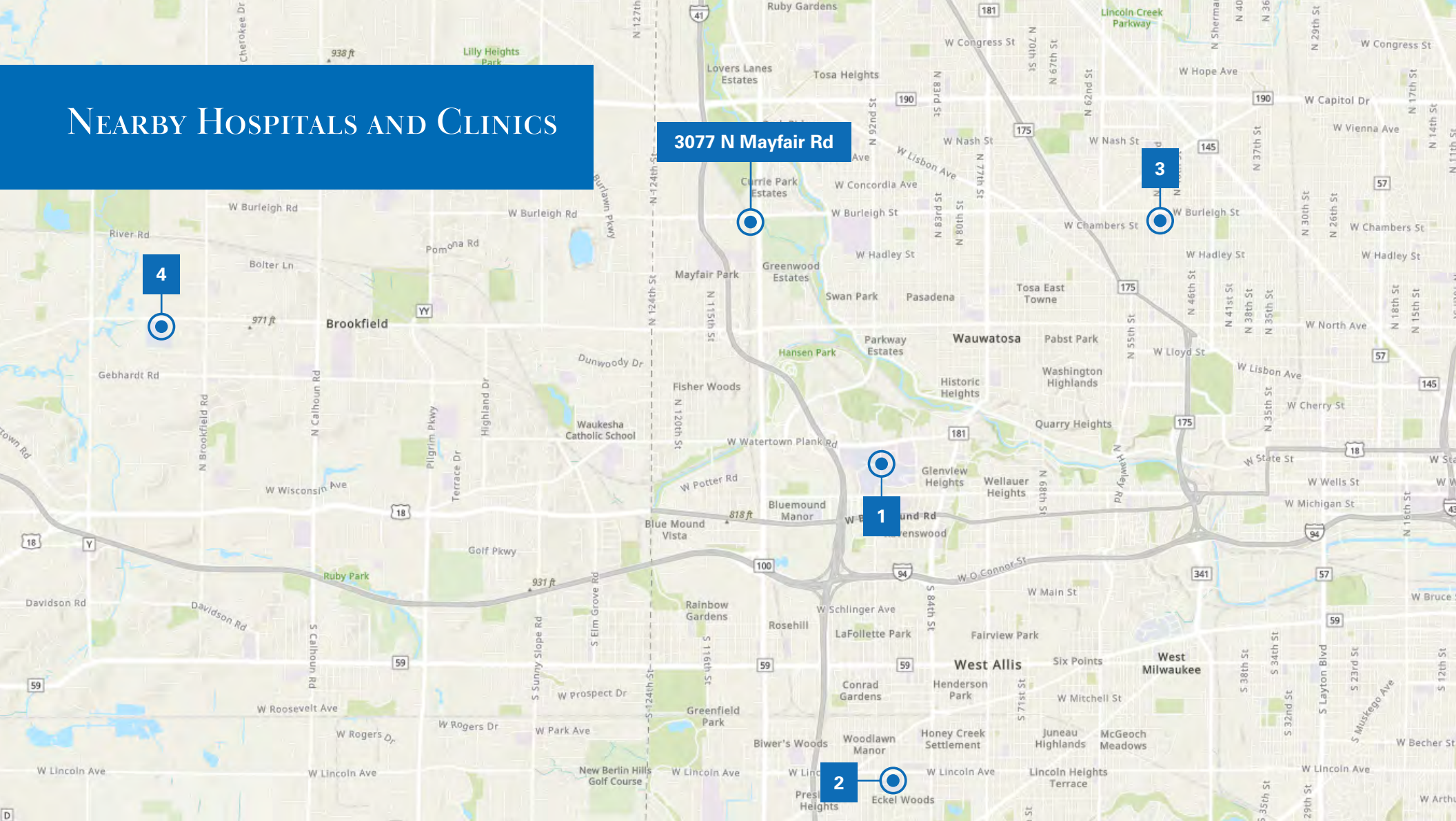


**SUITE 306**  
**2,584 RSF**

**SUITE 303**  
**11,573 RSF**  
**(Divisible)**



# NEARBY HOSPITALS AND CLINICS



## NEARBY HOSPITALS/CLINICS

## DISTANCE

## DRIVE TIME

1. Froedtert/Medical College/Children's Hospital	3.4 Mi	7 Mins
2. Aurora West Allis Medical Center	6.4 Mi	9 Mins
3. Ascension St. Joseph Hospital	3.8 Mi	8 Mins
4. Elmbrook Memorial Hospital	6.5 Mi	15 Mins



**298,479**  
POPULATION  
(5-Mile Radius)



**\$96,889**  
AVERAGE  
HOUSEHOLD  
INCOME  
(5-Mile Radius)

# NEARBY AMENITIES

## THE MAYFAIR COLLECTION

WHOLE FOODS  
Rack  
Grand Appliances  
verlo  
carhartt  
DICK'S SPORTING GOODS  
HomeGoods  
AT&T  
maurices  
ULTA BEAUTY  
carter's  
BOB'S DISCOUNT FURNITURE  
OLD NAVY

American Freight  
APPLIANCES & FURNITURE

at home  
The Home Decor Superstore

3077 N Mayfair Rd

meijer

## MAYFAIR

★ macy's  
amc THEATRES  
NORDSTROM  
LUSH FRESH HANDMADE COSMETICS  
Crate&Barrel  
Foot Locker  
SEPHORA  
WILLIAMS SONOMA  
BARNES & NOBLE  
ANN TAYLOR  
FIVE GUYS  
P.F. CHANG'S

The Container Store

Manhattan TEXTILES

Indian Spices & Groceries

LINCOLN

Pick n Save

SYNERGY  
INDUSTRIAL CORPORATION

Lowe's

ALDI

W BURLEIGH ST

W BURLEIGH ST

AutoZone

sleep number

ExtraSpace Storage

American Freight  
APPLIANCES & FURNITURE

Habitat for Humanity  
ReStore

ENZO

WHITE | BLACK  
HOUSE MARKET

BEST BUY

The Cheesecake Factory

the Y

Kohl's

W NORTH AVE

N 124TH ST

100  
MAYFAIR RD



# STATE OF WISCONSIN BROKER DISCLOSURE TO NON-RESIDENTIAL CUSTOMERS

Wisconsin law requires all real estate licensees to give the following information about brokerage services to prospective customers.

Prior to negotiating on your behalf the brokerage firm, or an agent associated with the firm, must provide you the following disclosure statement.

## BROKER DISCLOSURE TO CUSTOMERS

You are the customer of the brokerage firm (hereinafter Firm). The Firm is either an agent of another party in the transaction or a subagent of another firm that is the agent of another party in the transaction. A broker or a salesperson acting on behalf of the Firm, may provide brokerage services to you. Whenever the Firm is providing brokerage services to you, the Firm and its brokers and salespersons (hereinafter Agents) owe you, the customer, the following duties:

- The duty to provide brokerage services to you fairly and honestly.
- The duty to exercise reasonable skill and care in providing brokerage services to you.
- The duty to provide you with accurate information about market conditions within a reasonable time if you request it, unless disclosure of the information is prohibited by law.
- The duty to disclose to you in writing certain Material Adverse Facts about a property, unless disclosure of the information is prohibited by law (see “Definition of Material Adverse Facts” below).
- The duty to protect your confidentiality. Unless the law requires it, the Firm and its Agents will not disclose your confidential information or the confidential information of other parties (see “Confidentiality Notice To Customers” below).
- The duty to safeguard trust funds and other property held by the Firm or its Agents.
- The duty, when negotiating, to present contract proposals in an objective and unbiased manner and disclose the advantages and disadvantages of the proposals.

Please review this information carefully. An agent of the Firm can answer your questions about brokerage services, but if you need legal advice, tax advice, or a professional property inspection, contact an attorney, tax advisor, or property inspector.

This disclosure is required by section 452.135 of the Wisconsin statutes and is for information only. It is a plain-language summary of a broker’s duties to a customer under section 452.133 (1) of the Wisconsin statutes.

## CONFIDENTIALITY NOTICE TO CUSTOMERS

The Firm and its Agents will keep confidential any information given to the Firm or its Agents in confidence, or any information obtained by the Firm or its Agents that a reasonable person would want to be kept confidential, unless the information must be disclosed by law or you authorize the Firm to disclose particular information. The Firm and its Agents shall continue to keep the information confidential after the Firm is no longer providing brokerage services to you.

The following information is required to be disclosed by law:

1. Material Adverse Facts, as defined in section 452.01 (5g) of the Wisconsin statutes (see “definition of material adverse facts” below).
2. Any facts known by the Firm or its Agents that contradict any information included in a written inspection report on the property or real estate that is the subject of the transaction.

To ensure that the Firm and its Agents is aware of what specific information you consider confidential, you may list that information below or provide that information to the Firm or its Agents by other means. At a later time, you may also provide the Firm or its Agents with other information that you consider to be confidential.

CONFIDENTIAL INFORMATION: \_\_\_\_\_

NON-CONFIDENTIAL INFORMATION (The following information may be disclosed by the Firm and its Agents): \_\_\_\_\_

(INSERT INFORMATION YOU AUTHORIZE TO BE DISCLOSED SUCH AS FINANCIAL QUALIFICATION INFORMATION)

## SEX OFFENDER REGISTRY

Notice: You may obtain information about the sex offender registry and persons registered with the registry by contacting the Wisconsin Department of Corrections on the Internet at <http://www.doc.wi.gov/> or by phone at 608-240-5830.

## DEFINITION OF MATERIAL ADVERSE FACTS

A “Material Adverse Fact” is defined in Wis. Stat. 452.01 (5g) as an adverse fact that a party indicates is of such significance, or that is generally recognized by a competent licensee as being of such significance to a reasonable party, that it affects or would affect the party’s decision to enter into a contract or agreement concerning a transaction or affects or would affect the party’s decision about the terms of such a contract or agreement.

An “Adverse Fact” is defined in Wis. Stat. 452.01 (1e) as a condition or occurrence that a competent licensee generally recognizes will significantly and adversely affect the value of the property, significantly reduce the structural integrity of improvements to real estate, or present a significant health risk to occupants of the property; or information that indicates that a party to a transaction is not able to or does not intend to meet his or her obligations under a contract or agreement made concerning the transaction.

No representation is made as to the legal validity of any provision or the adequacy of any provision on any specific transaction.

---

**Newmark Milwaukee Office**

757 N Broadway, Suite 700  
Milwaukee, WI 53202

**Tim Janusz**

*Managing Director*

t 414-908-9155  
tim.janusz@nmrk.com

**Rachel Schmidt, CCIM**

*Managing Director*

t 414-395-4691  
rachel.schmidt@nmrk.com

The information contained herein has been obtained from sources deemed reliable but has not been verified and no guarantee, warranty or representation, either express or implied, is made with respect to such information. Terms of sale or lease and availability are subject to change or withdrawal without notice.

**NEWMARK**