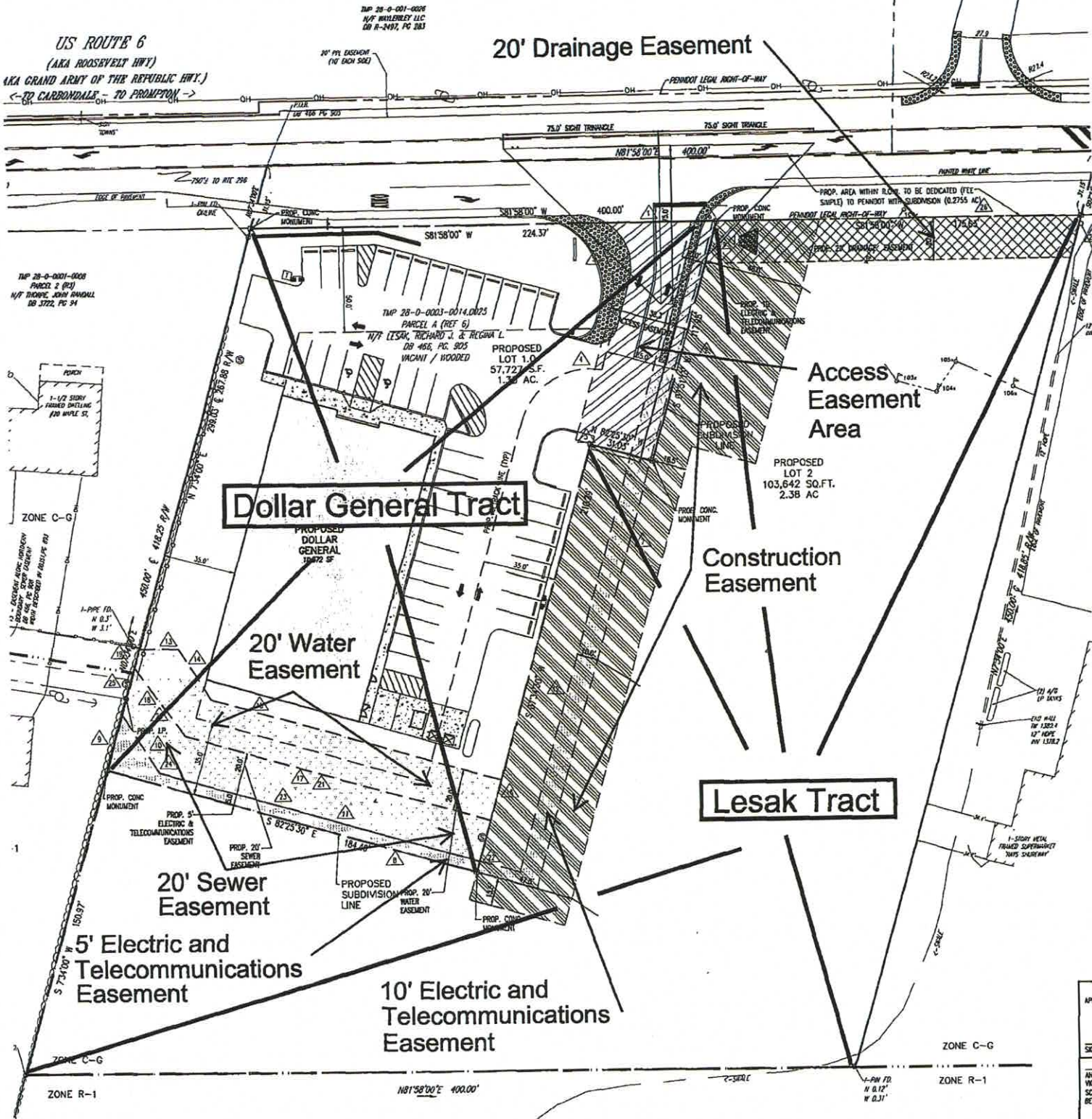


Exhibit C

US ROUTE 6
(AKA ROOSEVELT HWY)
(AKA GRAND ARMY OF THE REPUBLIC HWY.)
<- TO CARBONDALE - TO PROMPTON ->

20' Drainage Easement



Dollar General Tract

Lesak Tract

TWP 28-0-0001-0014
N/T FETZ HWY D & BARBARA R.
PG 10097, PG 10098

APPR
SEW
AND WOLA SCOP BE 5'
COMP
SDMP
AND