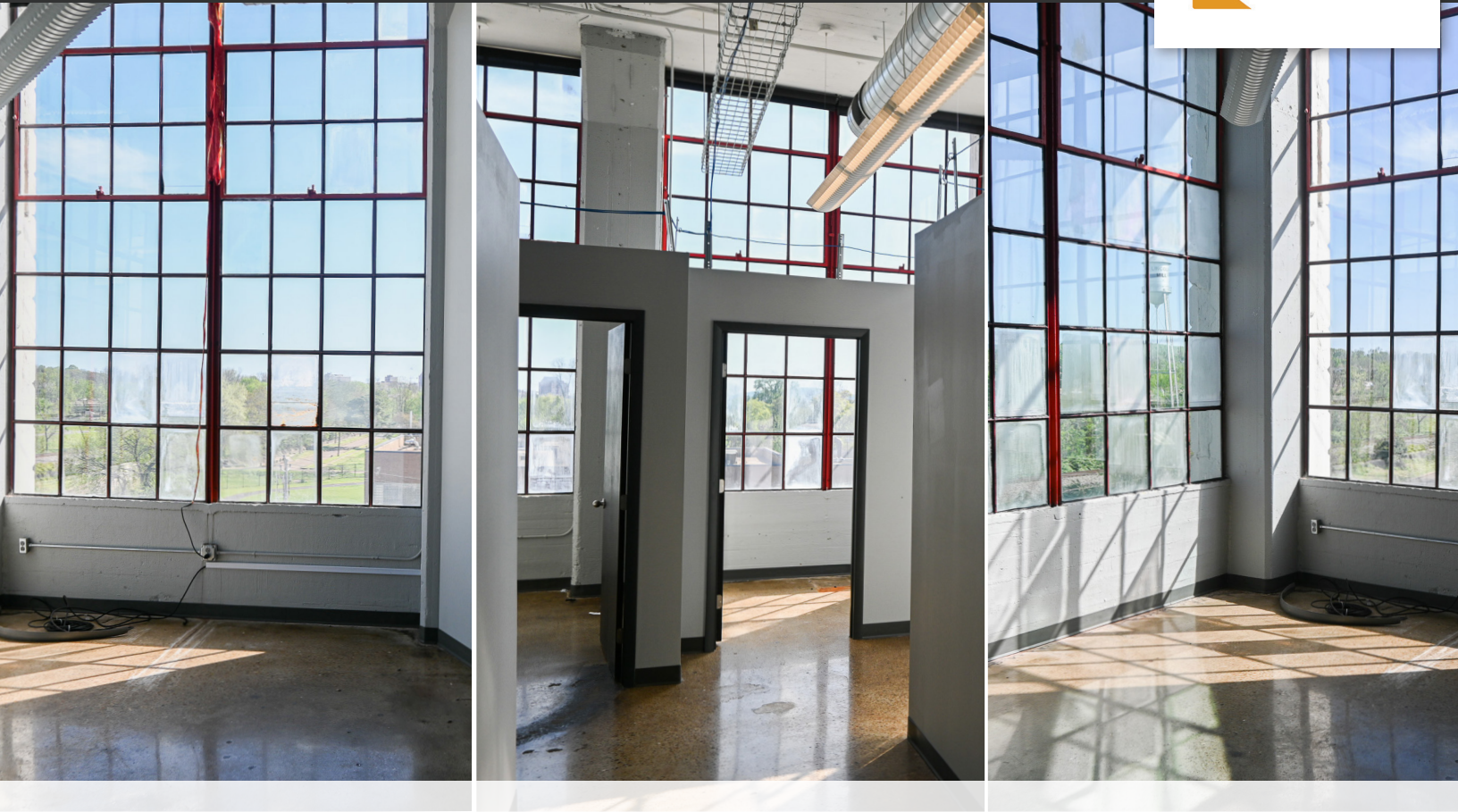


OFFICE SPACE FOR LEASE

LINCOLN MILL - SUITE 3001 | HUNTSVILLE, AL



LOCATION

1300 Meridian St.
Huntsville, AL 35801



SIZE

3,741 SF of Office Space



PRICE

Call For Pricing

ABOUT THE PROPERTY

Lincoln Mill is a historic 205,000-square-foot facility transformed into a Class-A office campus in Huntsville, complete with retail, food, and beverage amenities.

PROPERTY HIGHLIGHTS:

- The suite includes 10 private offices with natural lighting, a conference room, a kitchenette, and five central workspaces.
- Suite 3001 is located on the third floor on the corner with plenty of windows for excellent views and natural lighting.
- Office near Dye House, the property's retail hub with Turbo Coffee, High Point Climbing Gym, interior design showroom, and Salt Smokehouse.
- Elevator access to all floors.
- Building offers on-site gym facility and common restrooms.



CRUNKLETON
COMMERCIAL REAL ESTATE GROUP

FOR MORE INFORMATION:

Eric St. John, CCIM

✉ eric@crunkletonassociates.com

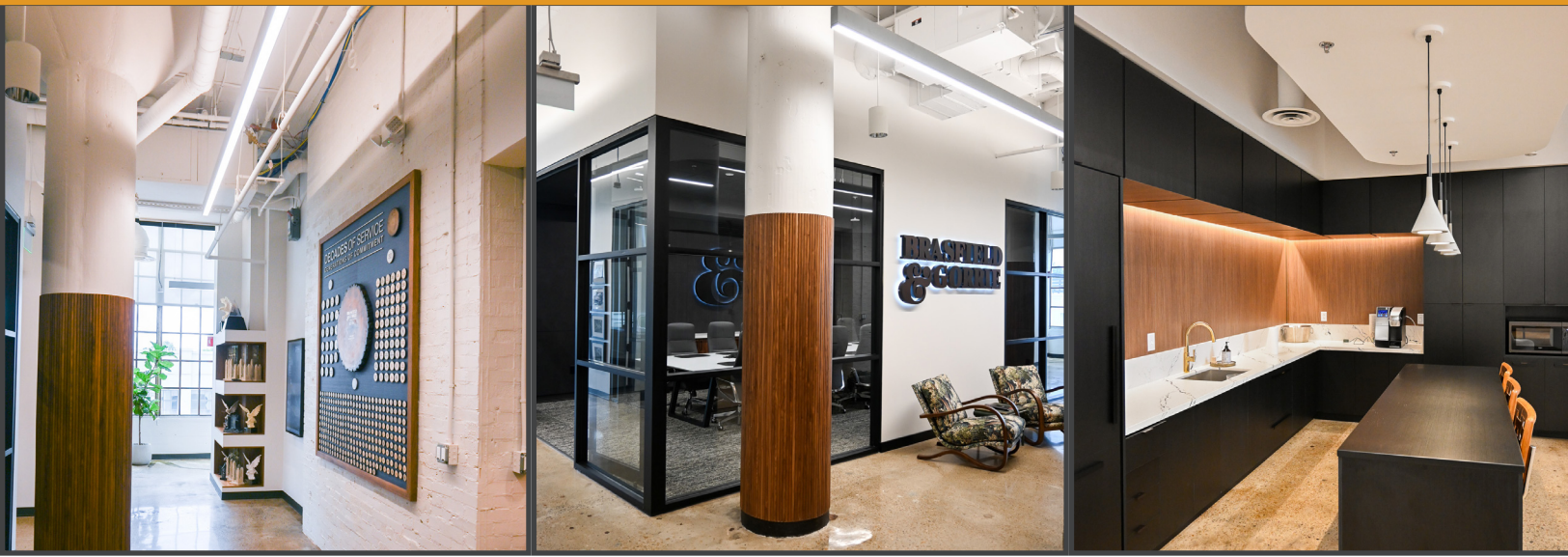
☎ 256-384-7603

Walker Purvis

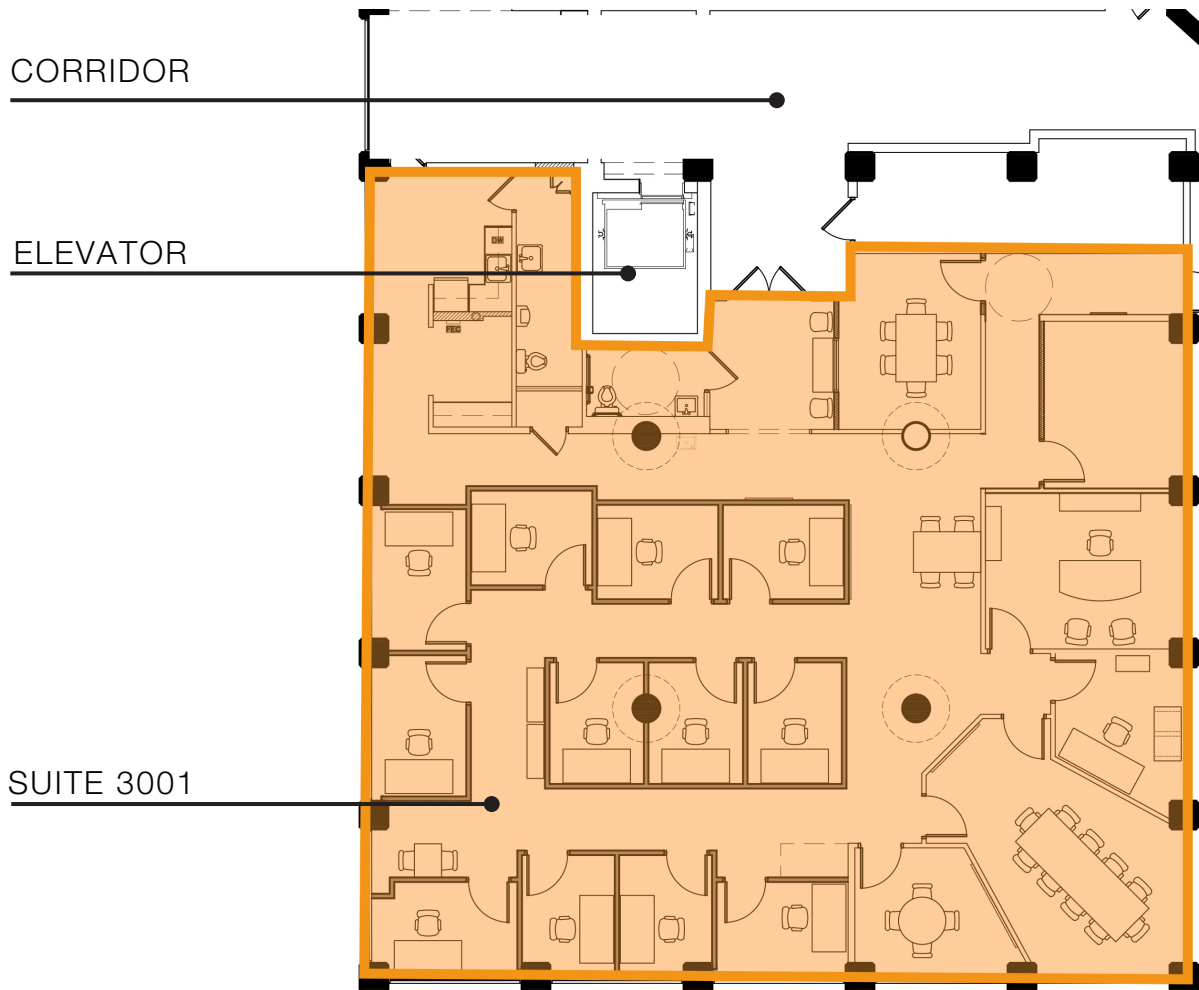
✉ walker@crunkletonassociates.com

☎ 256-384-7606

THIRD FLOOR PLAN



**Imagine the possibilities—these photos showcase a similar unit, highlighting the potential layout and finishes of the available space*



CRUNKLETON
COMMERCIAL REAL ESTATE GROUP

FOR MORE INFORMATION:

Eric St. John, CCIM

✉ eric@crunkletonassociates.com

☎ 256-384-7603

Walker Purvis

✉ walker@crunkletonassociates.com

☎ 256-384-7606