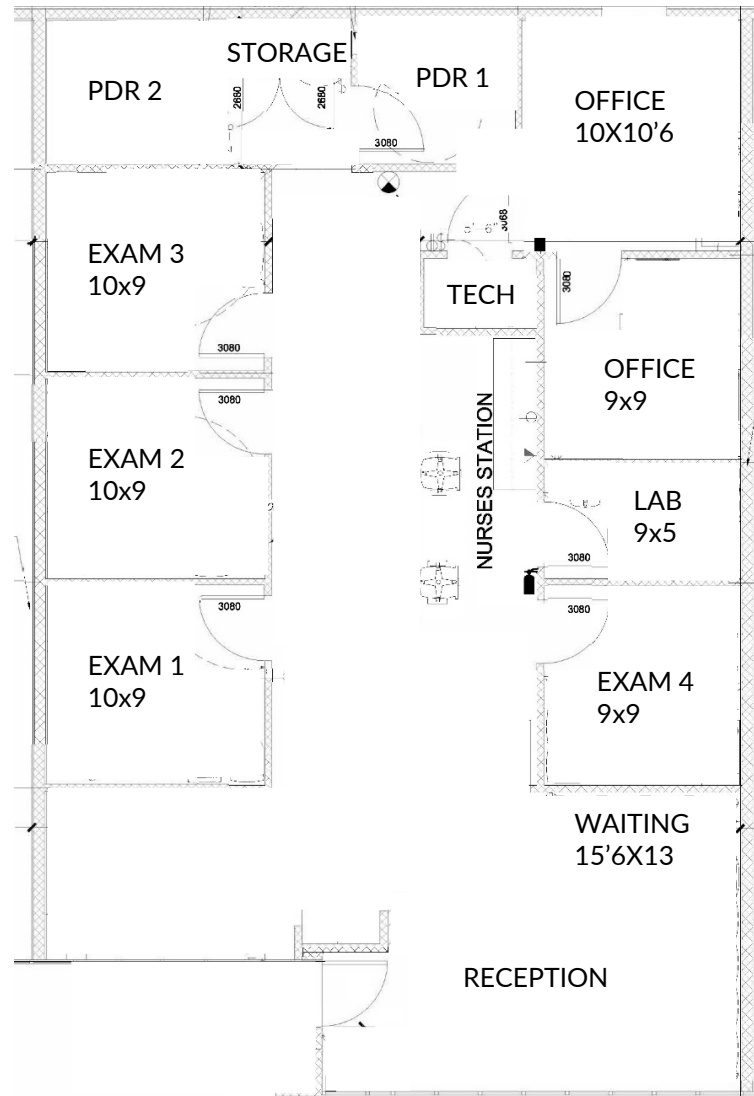


# FOR LEASE

## RETAIL SPACE AVAILABLE

17228 W GRAND PARKWAY S, SUGAR LAND, TX 77479



Suite 2010  
1,540 SF

**DANNA SOSSEN**

281.207.3709 | dsossen@icocommercial.com

**TIMOTHY BROWN**

281.207.3718 | tbrown@icocommercial.com