

**SAN JUAN CENTER  
9045 FAIR OAKS BLVD  
CARMICHAEL, CA**

**FOR LEASE**

**1,094 SF 2ND GENERATION SALON SUITE**

**ETHAN CONRAD**  
PROPERTIES INC.



**REMODEL COMPLETE**

FOR MORE INFORMATION CONTACT:

**Race Merritt**

DRE: #01700659

race@ethanconradprop.com

**Joey Chiurazzi**

DRE: #02123466

joey@ethanconradprop.com

**Austin Barron**

DRE: #02082721

abarron@ethanconradprop.com

**916.779.1000**

**FEATURES:**

- 2nd generation salon suite
- Hard corner site at signalized intersection of Fair Oaks Blvd and San Juan Ave
- Traffic count of over 48,000 cars per day
- Located on a major commuter route, minutes from Hwy 50
- Parking ratio: 6.35/1,000 SF
- Monument signage available
- Land for potential drive-thru available



**PROPERTY DETAILS:**

This property is located in the established City of Carmichael, CA and is surrounded by dense residential subdivisions with strong demographics. The center is situated on the corner of the signalized intersection of Fair Oaks Blvd and San Juan Ave, which are two of the busiest streets in the area.

Other tenants in the center include: Family Donuts, Royal Nails and Pasquale's Pizza.

[Drive-Thru Brochure Available.](#)

**LEASE RATE:**

Suite H: 1,094 SF \$1,641.00 (\$1.50 PSF, NNN)

NNN costs are approximately \$0.59 PSF.

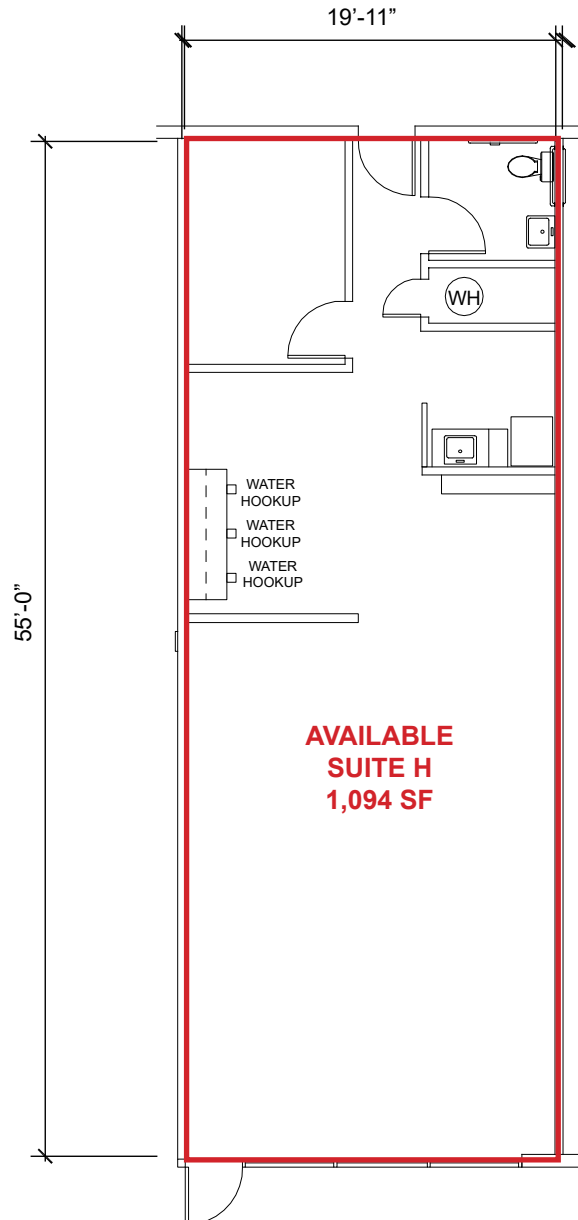
**DEMOGRAPHICS:**

	<b>1 Mile</b>	<b>3 Mile</b>	<b>5 Mile</b>
2025 Total Population (est):	10,473	121,708	337,797
2025 Average HH Income:	\$149,372	124,886	\$120,300
Traffic Count:			
	Fair Oaks Blvd - 7,117		
	San Juan Ave - 10,471		

ETHAN CONRAD PROPERTIES, INC.  
 1300 NATIONAL DRIVE, SUITE 100 | SACRAMENTO CA, 95834 | 916.779.1000  
[www.ethanconradprop.com](http://www.ethanconradprop.com)

The information contained herein has been obtained from sources we believe to be reliable. However, we cannot guarantee, warrant or represent its accuracy and all information is subject to error, change or withdrawal. An interested party and their advisors should conduct an independent investigation of the property to determine to your satisfaction the suitability of the property for your needs.

FLOOR PLAN

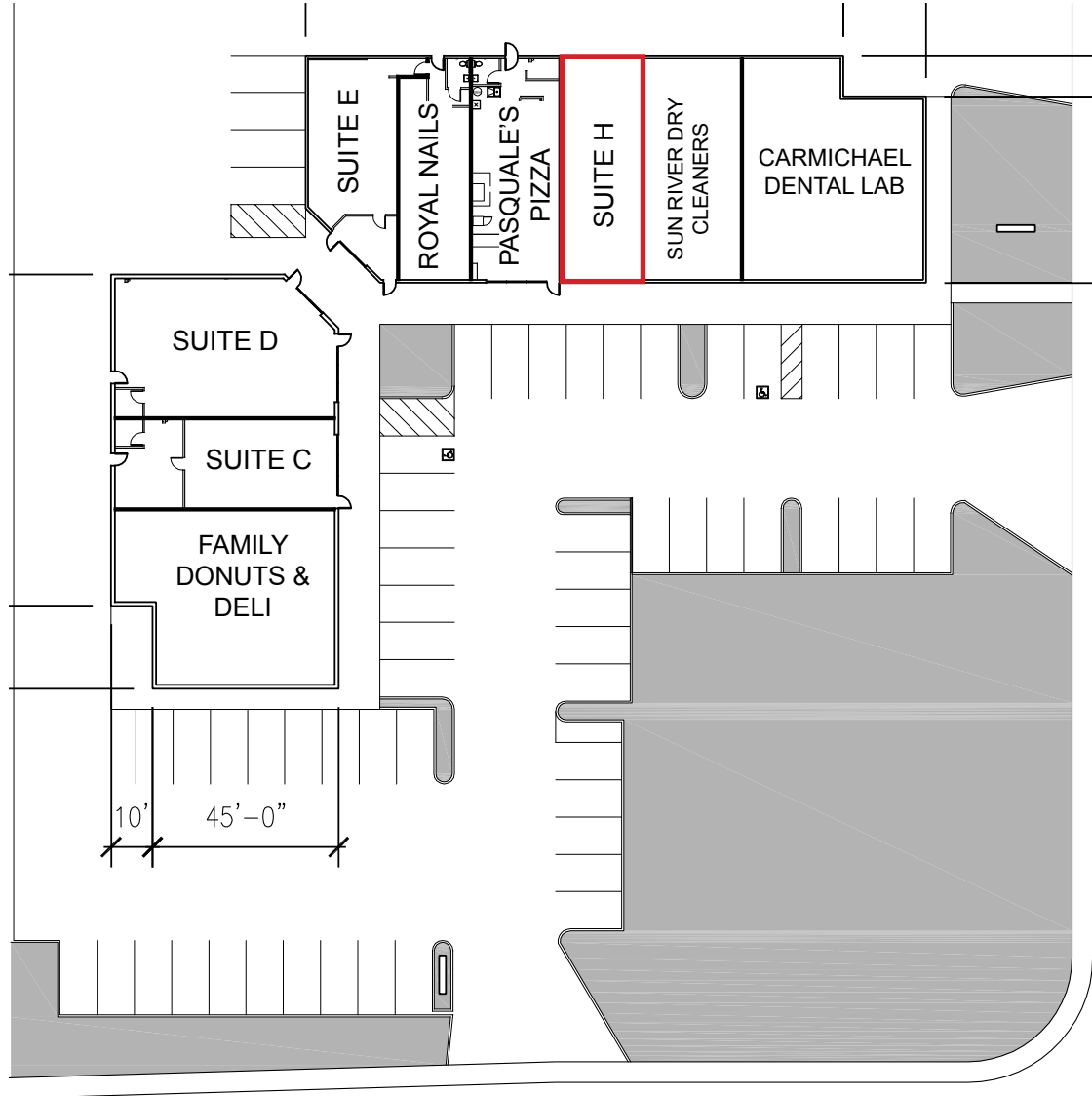


Suite	SF	Lease Rate	Monthly Rent
H	1,094	\$1.50 PSF, NNN	\$1,641.00
NNN costs are approximately \$0.59 PSF.			

ETHAN CONRAD PROPERTIES, INC.  
 1300 NATIONAL DRIVE, SUITE 100 | SACRAMENTO CA, 95834 | 916.779.1000  
[www.ethanconradprop.com](http://www.ethanconradprop.com)

The information contained herein has been obtained from sources we believe to be reliable. However, we cannot guarantee, warrant or represent its accuracy and all information is subject to error, change or withdrawal. An interested party and their advisors should conduct an independent investigation of the property to determine to your satisfaction the suitability of the property for your needs.

SITE PLAN



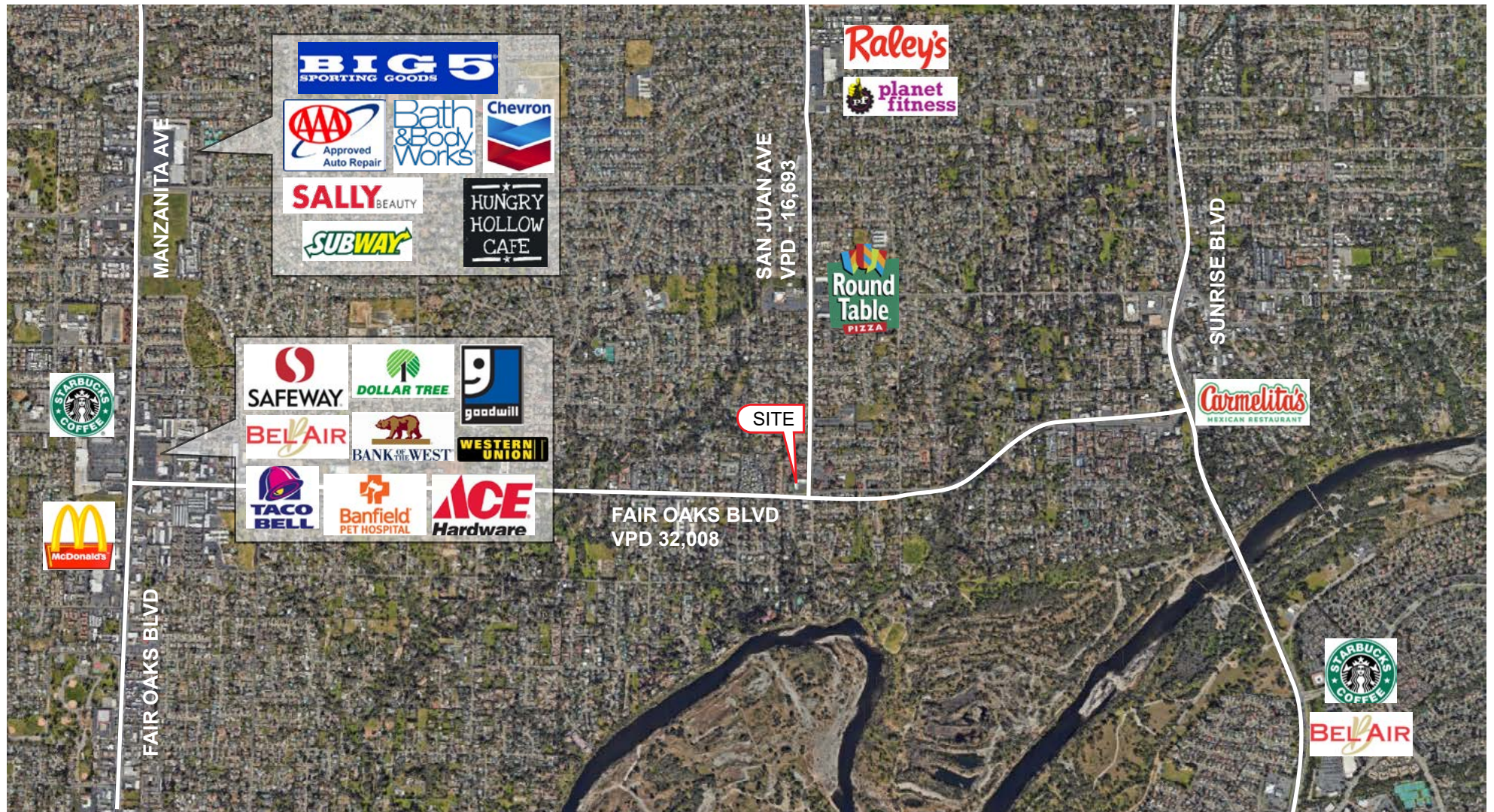
ETHAN CONRAD PROPERTIES, INC.  
1300 NATIONAL DRIVE, SUITE 100 | SACRAMENTO CA, 95834 | 916.779.1000  
www.ethanconradprop.com

The information contained herein has been obtained from sources we believe to be reliable. However, we cannot guarantee, warrant or represent its accuracy and all information is subject to error, change or withdrawal. An interested party and their advisors should conduct an independent investigation of the property to determine to your satisfaction the suitability of the property for your needs.



ETHAN CONRAD PROPERTIES, INC.  
1300 NATIONAL DRIVE, SUITE 100 | SACRAMENTO CA, 95834 | 916.779.1000  
[www.ethanconradprop.com](http://www.ethanconradprop.com)

The information contained herein has been obtained from sources we believe to be reliable. However, we cannot guarantee, warrant or represent its accuracy and all information is subject to error, change or withdrawal. An interested party and their advisors should conduct an independent investigation of the property to determine to your satisfaction the suitability of the property for your needs.



ETHAN CONRAD PROPERTIES, INC.  
1300 NATIONAL DRIVE, SUITE 100 | SACRAMENTO CA, 95834 | 916.779.1000  
[www.ethanconradprop.com](http://www.ethanconradprop.com)

The information contained herein has been obtained from sources we believe to be reliable. However, we cannot guarantee, warrant or represent its accuracy and all information is subject to error, change or withdrawal. An interested party and their advisors should conduct an independent investigation of the property to determine to your satisfaction the suitability of the property for your needs.