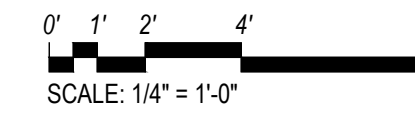


1 CELLAR CONSTRUCTION PLAN
SCALE: 1/4" = 1'-0"



LEGEND

NOTE: ALL ITEMS ARE NEW UNLESS OTHERWISE NOTED.

101A DOOR NUMBER

AREA NOT IN CONTRACT

NEW PARTITION TYPE 1B TYPICAL, UNLESS OTHERWISE NOTED, REFER TO DWG A-801 FOR PARTITION TYPES.

GENERAL NOTES

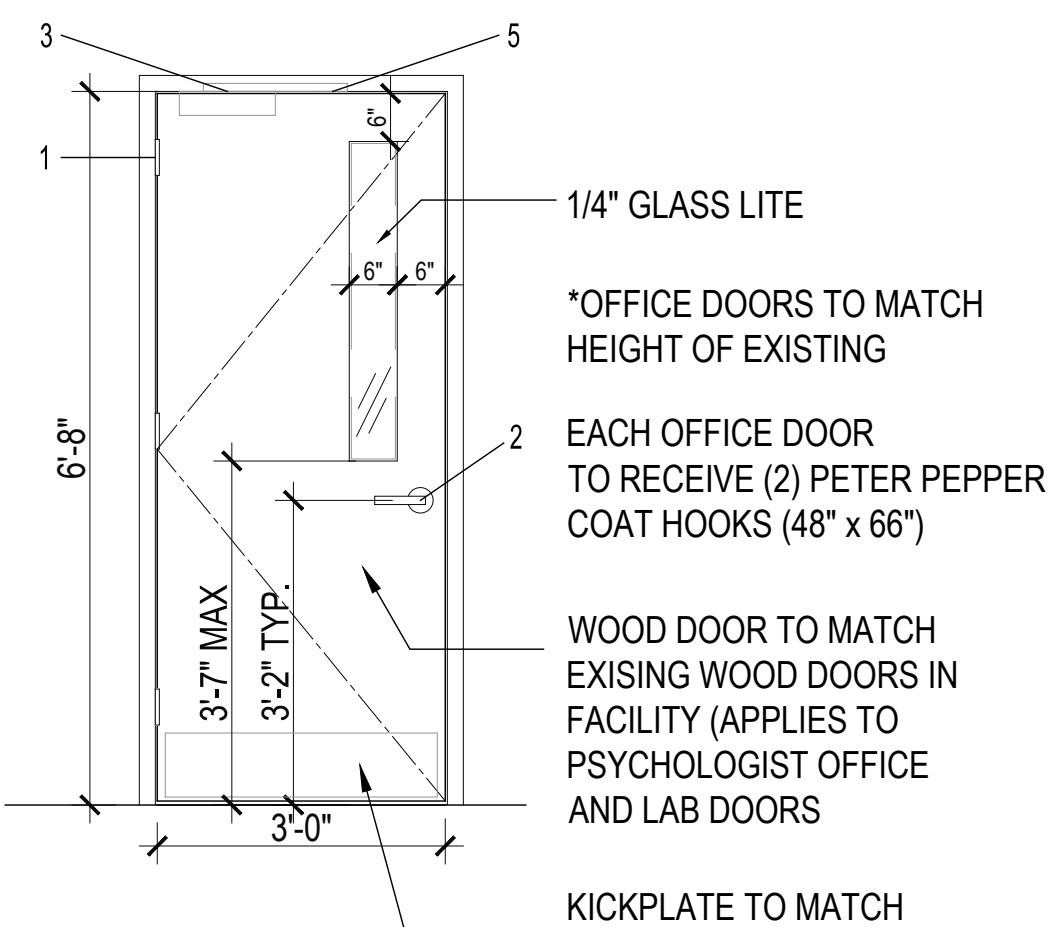
- FIRE STOP ALL SLAB PENETRATIONS TO MAINTAIN EXISTING FIRE RATING.
- MAINTAIN EXISTING FIRE RATING OF EXISTING CORRIDOR WALLS.
- NEW HOLLOW METAL DOORS SHALL BE PAINTED SEMI-GLOSS FINISH. DOORS AND FRAMES IN 1 HOUR FIRE RATED WALLS TO BE 45 MINUTES FIRE RATED. DOORS AND FRAMES IN 2 HOUR RATED WALLS TO BE 90 MINUTES FIRE RATED.
- ALL WALLS IN AREA OF WORK TO RECEIVE BENJAMIN MOORE PAINT, EGGSHELL FINISH. COLOR TO MATCH EXISING FACILITY.
- GC SHALL BE RESPONSIBLE FOR PROVIDING IN-WALL BLOCKING AT ALL WALL-MOUNTED EQUIPMENT (INCLUDING MONITORS) AND MILLWORK CABINETRY.
- AT ALL NEW OR EXISTING PARTITIONS INDICATED AS FIRE RATED IN THE AREA OF WORK, GC IS RESPONSIBLE FOR INSPECTION OF EXISTING CONDITIONS, AND REPAIR TO UNPROTECTED PENETRATIONS OR OPENINGS.
- MASONITE PATHS TO THE AREA OF WORK SHALL BE MAINTAINED AT ALL TIMES DURING WORKING HOURS.

FIELD NOTES

- REPAIR FLOORING ALONG LINE OF NEW PARTITION (BOTH SIDES)
- SKIM COAT ROOM WALLS TO RECEIVE NEW PAINT AS REQUIRED.

ADD ALTERNATE

- REMOVE EXISTING FLOORING IN THIS AREA. PROVIDE FLOOR PREP AS REQUIRED TO INSTALL NEW CARPET TILE: SHAW CONTRACT 'BLUR' OR EQUAL.
- REMOVE EXISTING FLOORING IN THIS AREA. PROVIDE FLOOR PREP AS REQUIRED TO INSTALL NEW ARMSTRONG BIO-BASED TILE (12X24).

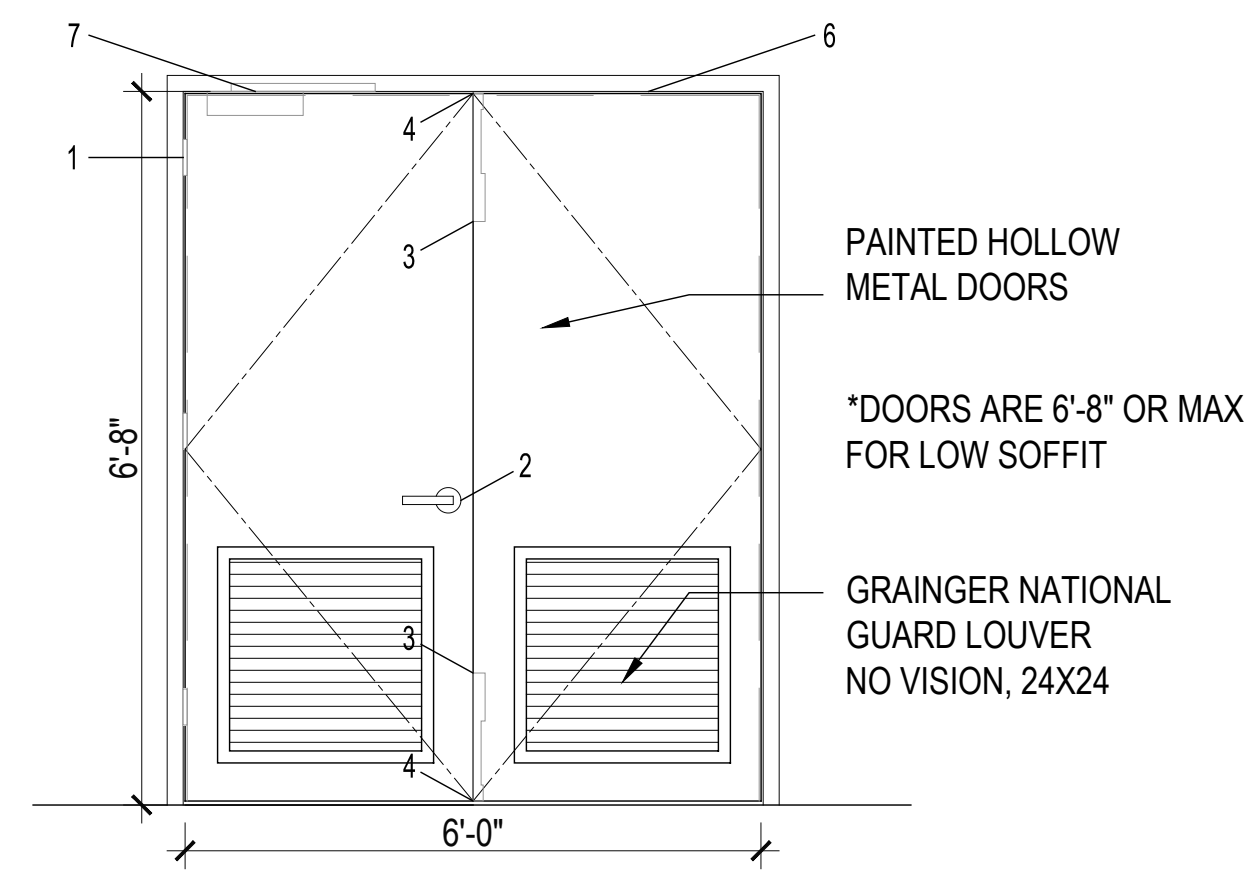


A OFFICE DOORS
SCALE: N.T.S.

HARDWARE - TYPE A

Office Doors (Non Fire-Rated)

- Hinges (1 1/2 pair) - Ives 5BB1, medium duty 4 1/2" x 4 1/2"
- Cylindrical Lockset - Schlage L-9070
Function: Classroom
Lever: Rhodes
Finish: Satin chrome
Cylinder: Multi-lock removable construction core.
Latch: deadlatch.
Strike: ANSI standard.
- Closer - LCN 4040XP. Mount on office side
- Doorstop - Ives WS series: Wall stop
Ives FS series: Floor dome stop (Alternate)
Ives GJ 450 Series (wood doors): Overhead stop (Alternate where door is in middle of room).
Ives GJ 410 Series (metal doors)
- Smoke seals - Zero 188S-BK. Stick on seal.

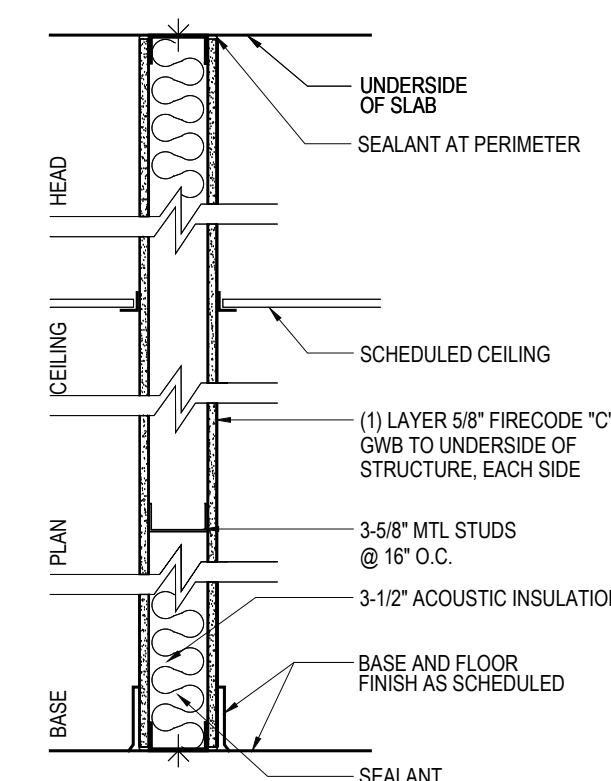


B UTILITY ROOM DOORS - PAIR
SCALE: N.T.S.

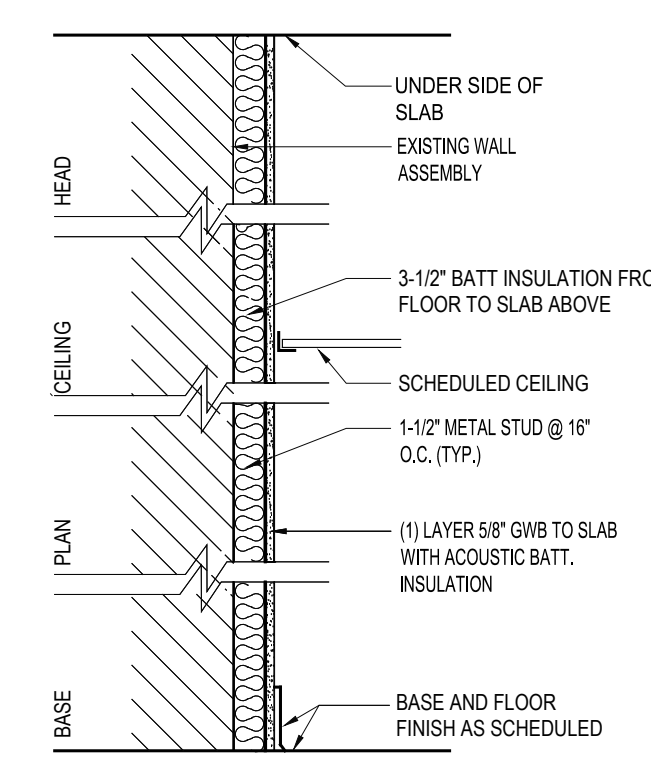
HARDWARE - TYPE A

Utility Room Doors, Pair

- Hinges (3 pair) - Ives 5BB1, medium duty 4 1/2" x 4 1/2"
- Cylindrical Lockset - Schlage L9080-J x 06A
Function: Storeroom.
Lever: 06A
Finish: Satin chrome
Cylinder: Multi-lock removable construction core.
Latch: deadlatch.
- Flush bolts - Ives 458
- Dustproof strike - Ives DP2.
- Closer - LCN 4040XP. Mount on utility room side.
- Doorstop - Ives WS series: Wall stop
Ives FS series: Floor dome stop (Alternate)
Ives GJ 450 Series (wood doors): Overhead stop (Alternate where door is in middle of room).
Ives GJ 410 Series (metal doors)
- Smoke seals - Zero 188S-BK
- Astragal seals - Zero 328A x 328A.



- 1 PARTITION / INTERIOR STEEL STUD 1 HR RATED
- 1A 1 HR RATED, MOISTURE RESISTANT
- 1B NON-RATED
- 1C NON-RATED, MOISTURE RESISTANT



- 8 FURRING NON-RATED GYP. BD. TO 6" ABOVE CEILING
- 8A FURRING NON-RATED GYP. BD. EXTENDS TO SLAB
- 8B FURRING NON-RATED MOISTURE RESISTANT

3 PARTITION TYPES
SCALE: N.T.S.

2 DOOR TYPES
SCALE: N.T.S.

PROJECT CLIENT AND LOCATION

NYU Langone
MEDICAL CENTER

OCCUPATIONAL & INDUSTRIAL ORTHOPEDIC CENTER

63 DOWNING STREET
NEW YORK, NY 10014

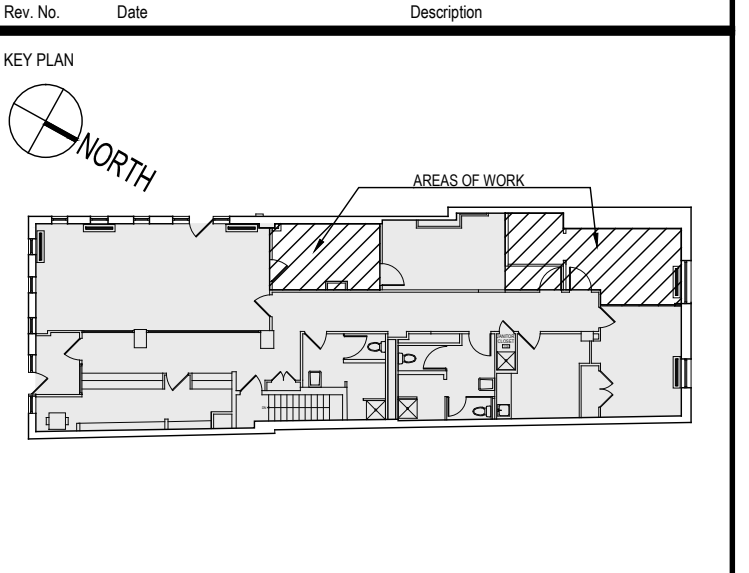
ARCHITECTS / INTERIOR DESIGNERS:

INTEGRATED DESIGN GROUP
345 SEVENTH AVENUE - 17TH FLOOR
NEW YORK, NY 10016 TEL. 212.869.3540

MEP ENGINEERS:

M-E ENGINEERS
29 WEST 38TH STREET, 5TH FLOOR
NEW YORK, NY 10018
TEL. 212.447.6770 / FAX 212.447.6615

Rev. No.	Date	Description
2017-03-13		ISSUED FOR COST ESTIMATE



CELLAR CONSTRUCTION PLAN

SEAL & SIGNATURE

Project No. 13018C
Drawn By BC/MM
Date 2016-09-02
Checked By BE
DRAWING NUMBER
A-200.00
CADD FILE No. XX OF XX