



DENTAL SPACE

5820 VETERANS PARKWAY
COLUMBUS, GA 31904

FOR LEASE



ERNEST SMALLMAN IV, CCIM

c 706-888-6651

ernie@erniesmallman.com

1025 1st Ave | Columbus, GA 31901 | 706-256-1500



COLDWELL BANKER

KENNON, PARKER,
DUNCAN & DAVIS



Columbus
Phenix City
Ft Moore

MARKET

LANDMARK II - SUITE 307

BUILDING SIZE: 29,569 SF

SUITE SIZE: 1,702 SF

FEATURES:

- Building constructed in 1985 in a Professional Office Park
- Easy access to all of Columbus
- Close proximity to Interstate 185 and JR Allen Parkway
- Updated office suites
- Floor to ceiling windows
- High traffic counts - 27,900 CPD
- Great visibility and monument signage
- Well-suited for a variety of tenants



LEASE RATE
\$18.50 per ft
PLUS CAM

ERNEST SMALLMAN IV, CCIM

c 706-888-6651

ernie@erniesmallman.com

1025 1st Ave | Columbus, GA 31901 | 706-256-1500

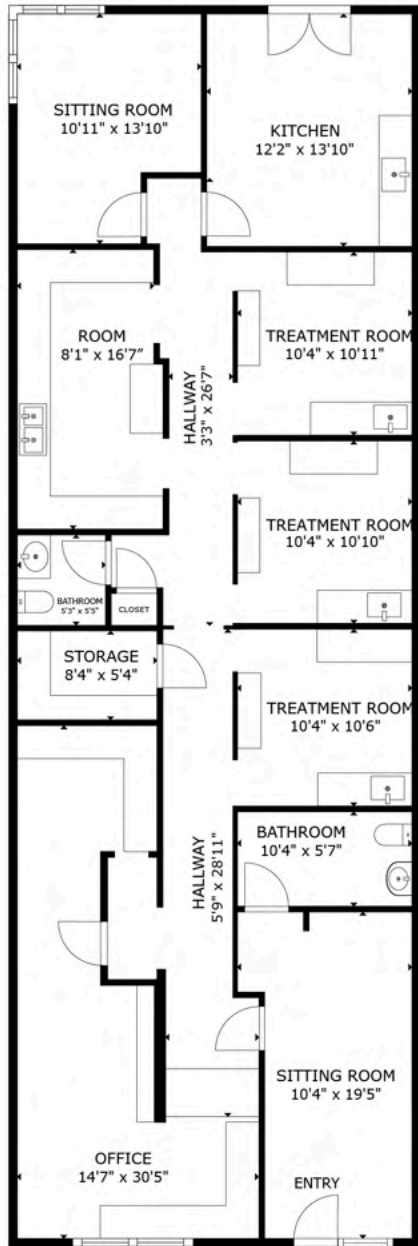


COLDWELL BANKER

KENNON, PARKER,
DUNCAN & DAVIS

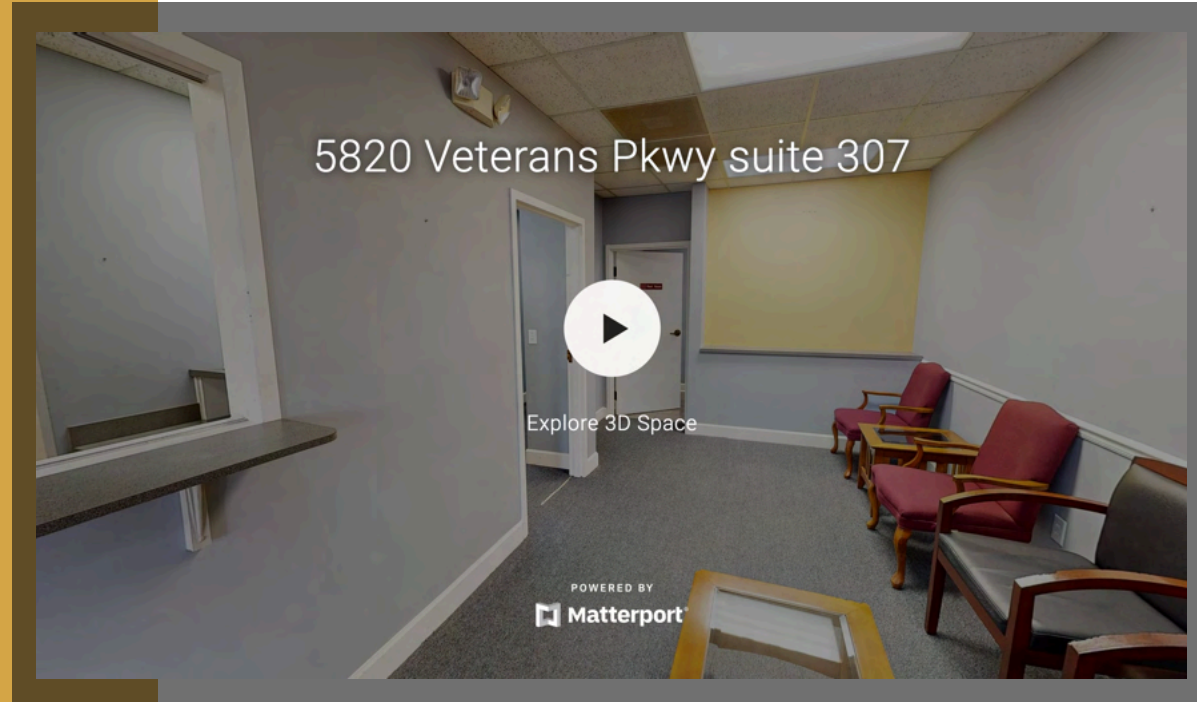
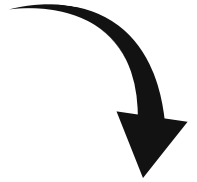
*The land acreage and/or building square footage was obtained from the County's Geographical Information System or other electronic resources. For exact square footage and/or acreage, we recommend that prior to purchase, a prospective Buyer/Tenant obtain a boundary survey or have the building measured professionally.

©2023 Coldwell Banker Real Estate LLC, dba Coldwell Banker Commercial Affiliates. All Rights Reserved. Coldwell Banker Real Estate LLC, dba Coldwell Banker Commercial Affiliates fully supports the principles of the Equal Opportunity Act. Each Office is Independently Owned and Operated. Coldwell Banker Commercial and the Coldwell Banker Commercial Logo are registered service marks owned by Coldwell Banker Real Estate LLC, dba Coldwell Banker Commercial Affiliates.



FLOOR PLAN GROSS INTERNAL AREA
FLOOR PLAN: 1,702 sq. ft
SIZES AND DIMENSIONS ARE APPROXIMATE, ACTUAL MAY VARY.

**CLICK TO TAKE A
VIRTUAL TOUR**



ERNEST SMALLMAN IV, CCIM

c 706-888-6651

ernie@erniesmallmancre.com

1025 1st Ave | Columbus, GA 31901 | 706-256-1500

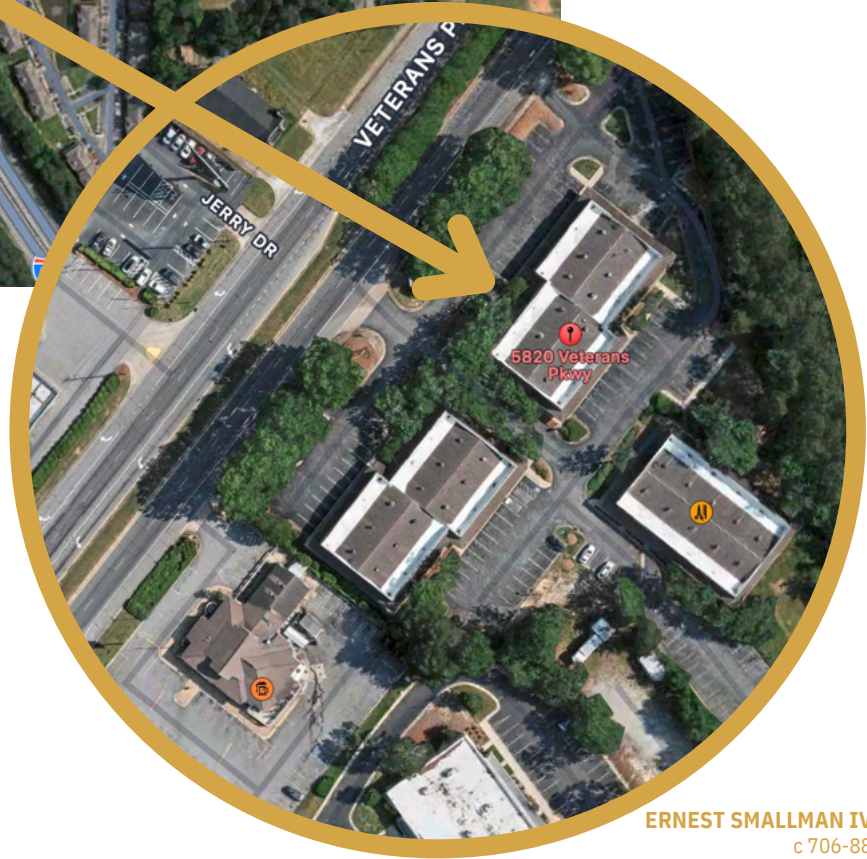
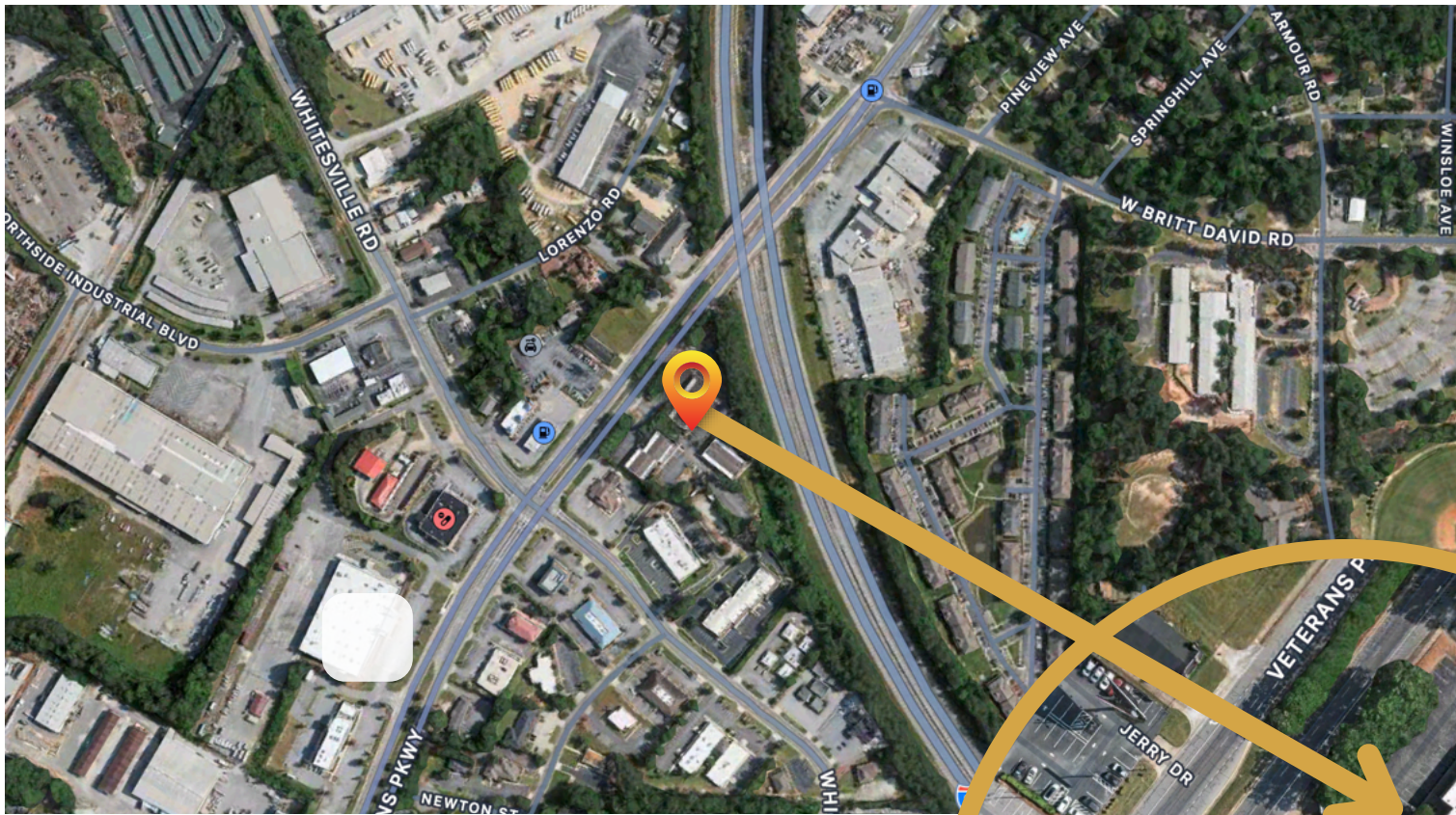


COLDWELL BANKER

KENNON, PARKER,
DUNCAN & DAVIS

*The land acreage and/or building square footage was obtained from the County's Geographical Information System or other electronic resources. For exact square footage and/or acreage, we recommend that prior to purchase, a prospective Buyer/Tenant obtain a boundary survey or have the building measured professionally.

©2023 Coldwell Banker Real Estate LLC, dba Coldwell Banker Commercial Affiliates. All Rights Reserved. Coldwell Banker Real Estate LLC, dba Coldwell Banker Commercial Affiliates fully supports the principles of the Equal Opportunity Act. Each Office is Independently Owned and Operated. Coldwell Banker Commercial and the Coldwell Banker Commercial Logo are registered service marks owned by Coldwell Banker Real Estate LLC, dba Coldwell Banker Commercial Affiliates.



NEARBY RETAILERS

- Miles To Go
- Walgreens
- Chef Lees
- Hibachi Express
- Zaxbys
- Chickfila
- Publix
- FedEx
- Circle K
- Truist
- Panera
- Starbucks
- Target
- Krystal

ERNEST SMALLMAN IV, CCIM
c 706-888-6651
ernie@erniesmallman.com
1025 1st Ave | Columbus, GA 31901 | 706-256-1500

*The land acreage and/or building square footage was obtained from the County's Geographical Information System or other electronic resources. For exact square footage and/or acreage, we recommend that prior to purchase, a prospective Buyer/Tenant obtain a boundary survey or have the building measured professionally.





5
MILES

TO
UPTOWN
COLUMBUS

5.3
MILES

TO
PHENIX
CITY

15
MILES

TO
FT MOORE

30
MILES

TO
OPELIKA

43
MILES

TO
LAGRANGE



ERNEST SMALLMAN IV, CCIM
c 706-888-6651
ernie@erniesmallman.com
1025 1st Ave | Columbus, GA 31901 | 706-256-1500



COLDWELL BANKER
KENNON, PARKER,
DUNCAN & DAVIS

CONTACT



ERNIE SMALLMAN

1025 1st Ave | Columbus, GA 31901 | 706-888-6651



706-888-6651 (Cell)
706-256-1500 (Office)



ernie@erniesmallmancre.com

<https://www.erniesmallman.com/>



COLDWELL BANKER

KENNON, PARKER,
DUNCAN & DAVIS

FOR MORE INFORMATION