

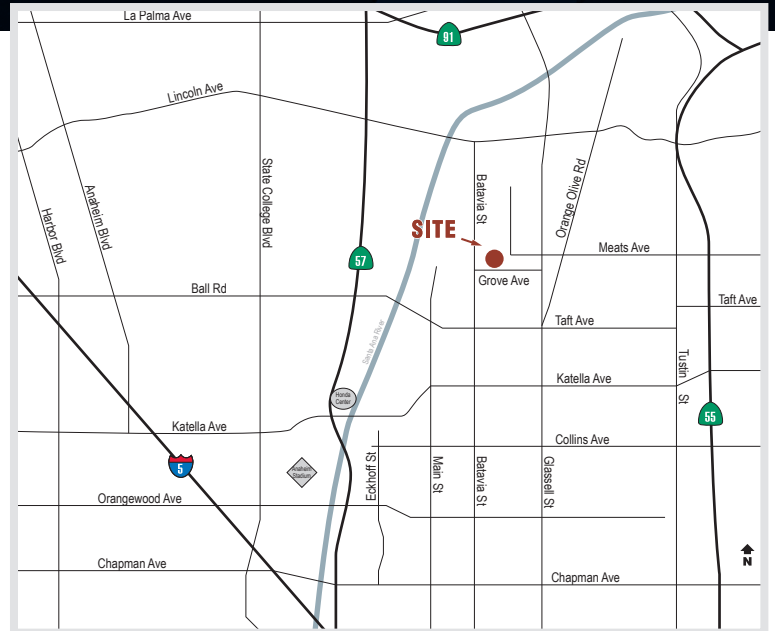
±5,395 SF FOR LEASE



## 488 W. MEATS AVENUE, ORANGE

### BUILDING FEATURES

- High Image Industrial Building
- Business Park Environment
- ±624 Square Feet of Office
- Two (2) Ground Level Loading Doors
- 400 AMP Electrical Panel
- 2.75:1 Parking
- ±16" Warehouse Clearance
- Fully Sprinklered
- Close proximity to 57, 5, 91, 55, and 22 Freeways



### MICHAEL ZEHNER SENIOR VICE PRESIDENT

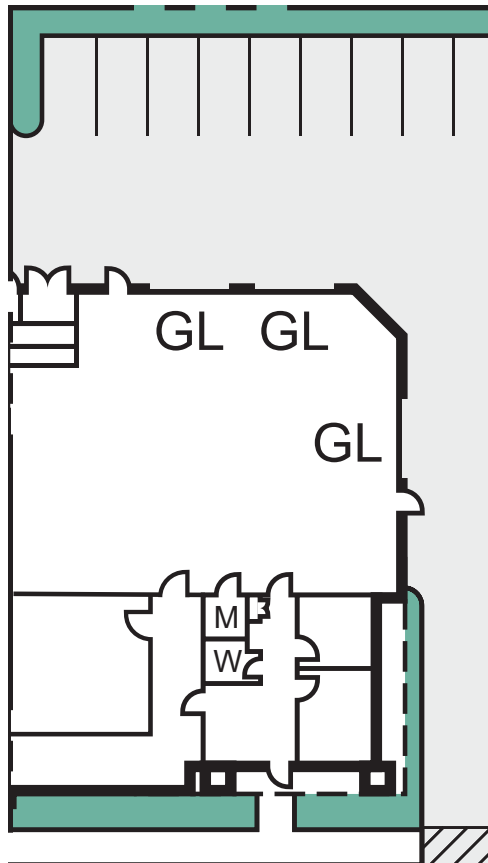
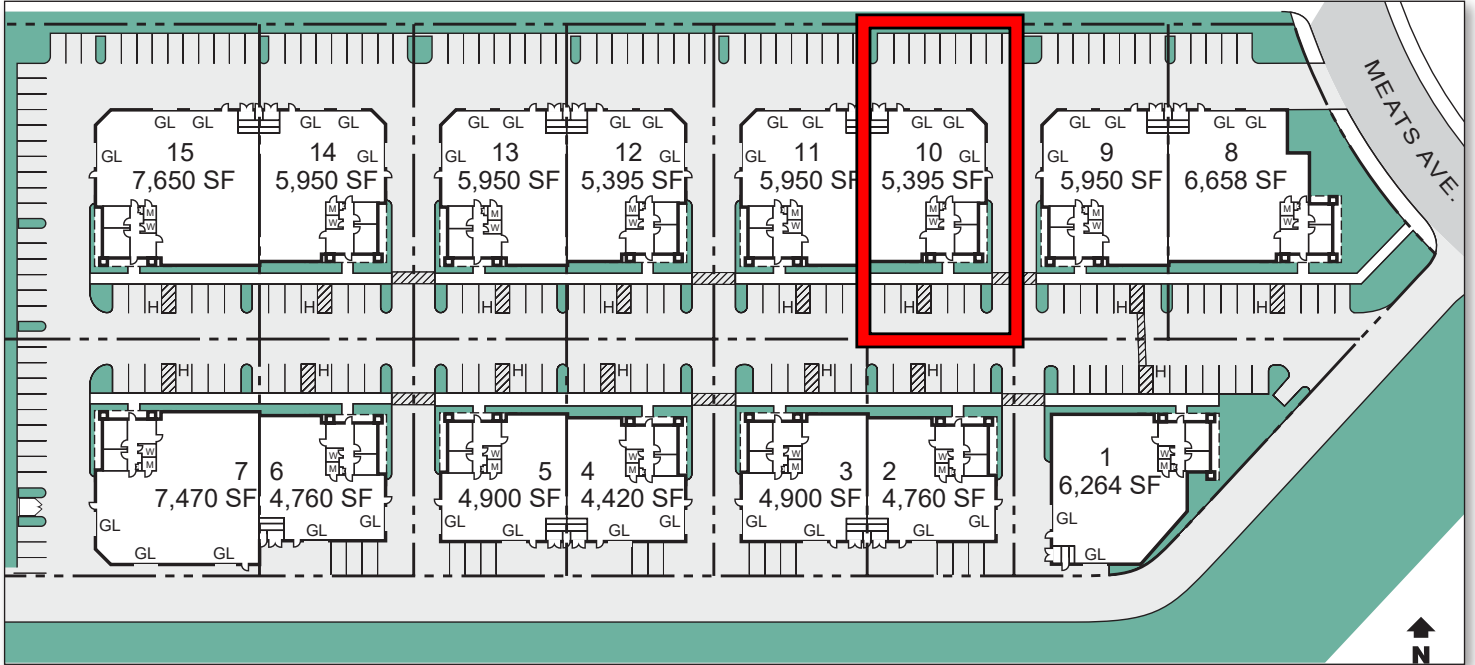
714.935.2328  
McZehner@voitco.com  
Lic. #01917963

**Voit**  
REAL ESTATE SERVICES

**ZEHNER HILL**  
INDUSTRIAL GROUP

2020 Main Street | Suite 100 | Irvine, California 92614 | 949.851.5100 | 949.261.9092 Fax | [www.VoitCo.com](http://www.VoitCo.com)

The information contained herein has been obtained from sources we deem reliable. While we have no reason to doubt its accuracy, we do not guarantee it. Licensed as Real Estate Salespersons by the DRE. ©2026 Voit Real Estate Services, Inc. All Rights Reserved. License #01991785.



Floor plan not to scale

**MICHAEL ZEHNER**  
**SENIOR VICE PRESIDENT**

714.935.2328  
McZehner@voitco.com  
Lic. #01917963

**Voit**  
REAL ESTATE SERVICES

**ZEHNER HILL**  
INDUSTRIAL GROUP

2020 Main Street | Suite 100 | Irvine, California 92614 | 949.851.5100 | 949.261.9092 Fax | [www.VoitCo.com](http://www.VoitCo.com)

The information contained herein has been obtained from sources we deem reliable. While we have no reason to doubt its accuracy, we do not guarantee it. Licensed as Real Estate Salespersons by the DRE. ©2026 Voit Real Estate Services, Inc. All Rights Reserved. License #01991785.