

FOR LEASE

1050 CHESTNUT STREET, MENLO PARK

OFFICE SUITES FOR LEASE

SUITE 201 - ±1,096 SQ. FT.

SUITE 203 - ±1,649 SQ. FT.

SUITE 202C - ±292 SQ. FT.

DUCA & HANLEY BUILDING
1050



**PREMIER
PROPERTIES**
COMMERCIAL
REAL ESTATE

BRAD EHIKIAN

Partner
dre license #01736391
| 650.618.3001
| brad.ehikian@prprop.com

JON GOLDMAN

Partner
dre license #01295503
| 650.618.3003
| jon.goldman@prprop.com

JESSE EBNER

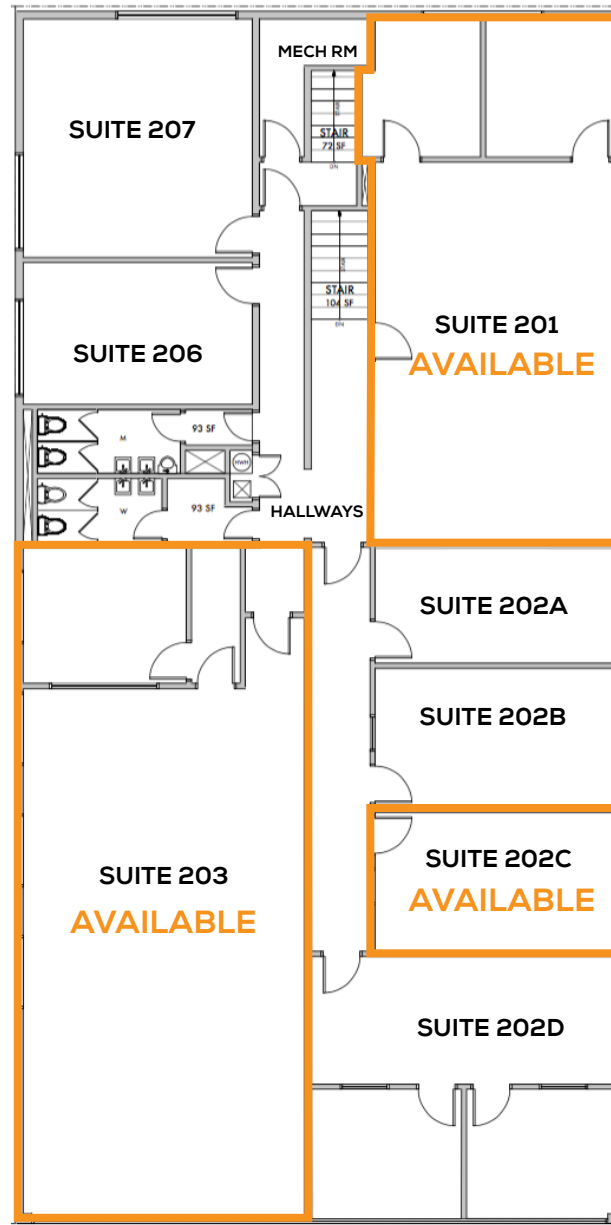
Vice President
dre license #02055989
| 650.618.3017
| jesse.ebner@prprop.com

PROPERTY HIGHLIGHTS

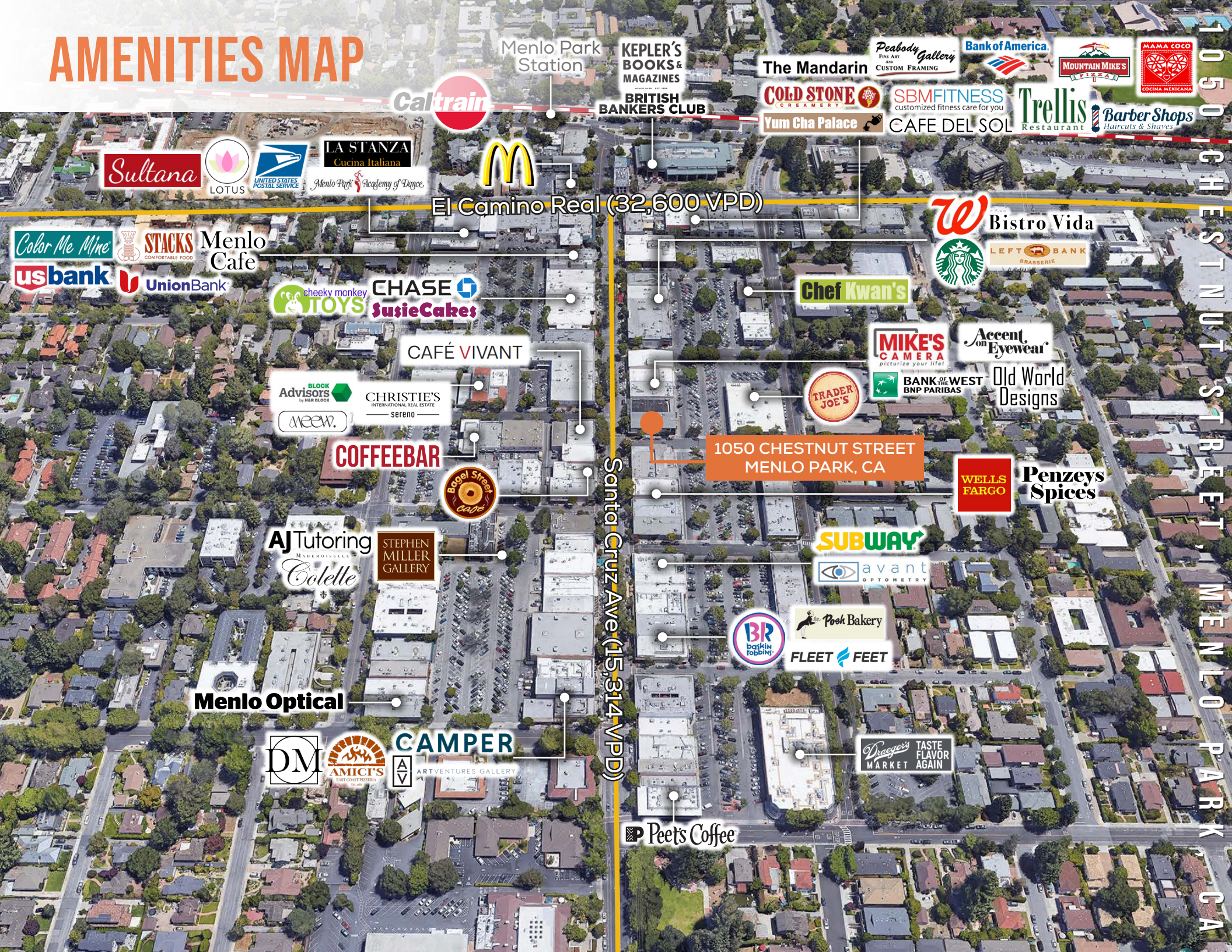
- ▀ Second Floor Offices with Open Layouts
- ▀ Suite 201: ±1,096 Sq. Ft. with Two Offices
- ▀ Suite 202C: ±292 Sq. Ft. Single-Room Office
- ▀ Suite 203: ±1,649 Sq. Ft. with One Meeting Room
- ▀ Abundant Natural Light
- ▀ Excellent Downtown Menlo Park Location
- ▀ Surrounded by Downtown Amenities, Restaurants, & Public Parking Lots
- ▀ Walking Distance to CalTrain Station

1050 CHESTNUT STREET, MENLO PARK, CA

FLOOR PLAN



AMENITIES MAP



Caltrain

Menlo Park Station

KEPLER'S BOOKS & MAGAZINES

The Mandarin

Peabody Gallery
POST ART
CUSTOM FRAMING

Bank of America

MOUNTAIN MIKE'S PIZZA

MAMA COCO
COCINA MEXICANA

BRITISH BANKERS CLUB

COLD STONE CREAMERY

SBM FITNESS
customized fitness care for you

Trellis Restaurant

Barber Shops
Haircuts & Shaves

Sultana



LA STANZA
Cucina Italiana
Menlo Park Academy of Dance



El Camino Real (32,600 VPD)



Bistro Vida

Color Me Mine

STACKS
COMFORTABLE FOOD

Menlo Cafe

usbank

UnionBank

cheeky monkey
TOYS

CHASE
SusieCakes

CAFÉ VIVANT

Chef Kwan's



LEFT BANK
BRASSERIE

BLOCK Advisors
by HER BLOOM

CHRISTIE'S
INTERNATIONAL REAL ESTATE
sereno

meow.

COFFEEBAR



1050 CHESTNUT STREET
MENLO PARK, CA



MIKE'S CAMERA
picturize your life!

BANK OF WEST
BNP PARIBAS

Accent on Eyewear

Old World Designs

WELLS FARGO

Penzeys Spices

AJ Tutoring
MADEMOISELLE

Colette

STEPHEN MILLER GALLERY

SUBWAY

avant
OPTOMETRY

Menlo Optical

DM

AMIC'S
EAST COAST PIZZERIA

CAMPER
ARTVENTURES GALLERY



Pook Bakery

FLEET FEET

Draeger's MARKET
TASTE FLAVOR AGAIN

Peets Coffee

Santa Cruz Ave (15,314 VPD)

1050 CHESTNUT STREET, MENLO PARK CA

TRANSPORTATION MAP

1050 CHESTNUT STREET, MENLO PARK, CA



San Francisco
Int. Airport

Downtown
San Francisco

Downtown
Redwood City



Bayshore Fwy
(227,900 VPD)

PLANES
SJC - 18 miles San Francisco - 1 h 4 min
SFO - 18 miles Milbrae - 36 min
OAK - 28 miles San Jose - 45 min

TRAINS

AUTOMOBILES
San Francisco - 31 miles
Downtown San Jose - 21 miles
Downtown Oakland - 34 miles

El Camino Real (32,600 VPD)

Caltrain Rail-Line

Downtown
Menlo Park

Menlo Park
Train Station

Santa Cruz Ave (15,314 VPD)

1050 CHESTNUT STREET
MENLO PARK, CA

DEMOGRAPHICS



ONE-MILE POPULATION: 16,574

MEDIAN AGE

37.8

MEDIAN NET



\$308,111

HOUSEHOLD SIZE



2.4

INCOME



Per Capita Income

\$99,251



Median Net Worth

\$308,111

White Collar Employees:

94%

Blue Collar Employees:

2%

Services:

4%

Unemployment Rate:

2.8%

Total Employees:

21,178

MAJOR EMPLOYERS:

Data for all businesses in area	1 mile	3 miles	5 miles
Total Businesses:	1,544	8,735	14,908
Total Employees:	21,178	118,289	220,511
Total Residential Population:	16,574	169,520	278,835
Average Household Size	2.4	2.8	2.8



FOR LEASE

1050 CHESTNUT STREET, MENLO PARK

OFFICE SUITES FOR LEASE

SUITE 201 - ±1,096 SQ. FT.

SUITE 203 - ±1,649 SQ. FT.

SUITE 202C - ±292 SQ. FT.

DUCA & HANLEY BUILDING
1050



**PREMIER
PROPERTIES**
COMMERCIAL
REAL ESTATE

BRAD EHIKIAN

Partner
dre license #01736391
| 650.618.3001
| brad.ehikian@prprop.com

JON GOLDMAN

Partner
dre license #01295503
| 650.618.3003
| jon.goldman@prprop.com

JESSE EBNER

Vice President
dre license #02055989
| 650.618.3017
| jesse.ebner@prprop.com