

FOR SALE OR LEASE

PRIME
DOWNTOWN
OFFICE SPACE
WITH PARKING

189 S. COVERSE STREET
SPARTANBURG, SC 29306



GREG NORRIS
864.494.7061

All information deemed reliable, but not guaranteed.

KDS 
CAINE
COMMERCIAL REAL ESTATE



AVAILABLE SPACE

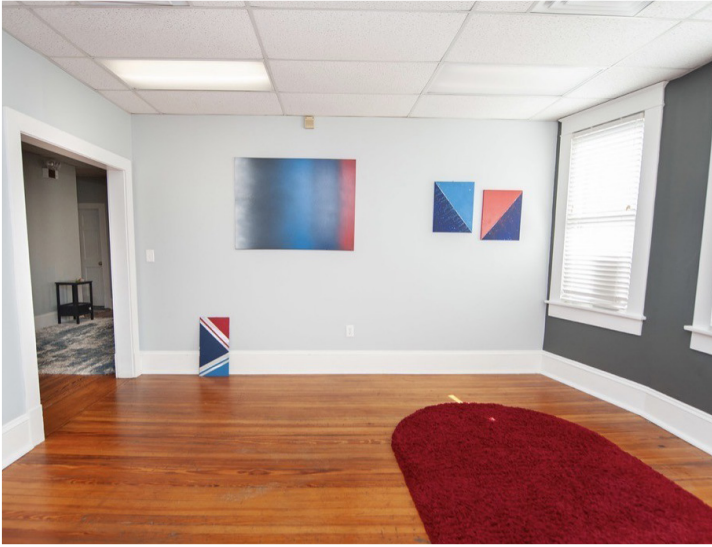
Address:	189 S. Converse Street Spartanburg, SC 29306
Sales Price:	\$695,000
Lease Rate:	\$2,500/Month Gross Lease
Available SF:	±5,858 SF For Sale ±2,179 SF Main Floor For Lease Including 1,500 SF Basement for Storage
Parking:	15 Spaces
Tax Map Number:	7-12-11-187.01

PROPERTY HIGHLIGHTS

- Three-Level Professional Building with Flexible Layout Options
- ±5,858 Total SF (±2,179 SF Main Floor | ±2,179 SF Second Floor | ±1,500 SF Basement)
- Private Exterior Entrances to both Main Floor and Second Floor
- Ideal for Owner-Occupant, Multi-Tenant, or Live/Work Configuration
- Basement Space Perfect for Storage, Additional Offices, or Flex Use
- Professional Setting Suitable for Office, Counseling, Nonprofit, or Specialty Services
- Opportunity for Income-Producing Investment with Separate Level Leasing
- Established Area with Strong Surrounding Professional Presence
- Included with the Office is Private On Site Parking (15 Spaces), Breakroom, Bathrooms, and Basement for Storage
- Minimum 3-Year Lease Desired (Main Floor and Basement)



PROPERTY PHOTOS

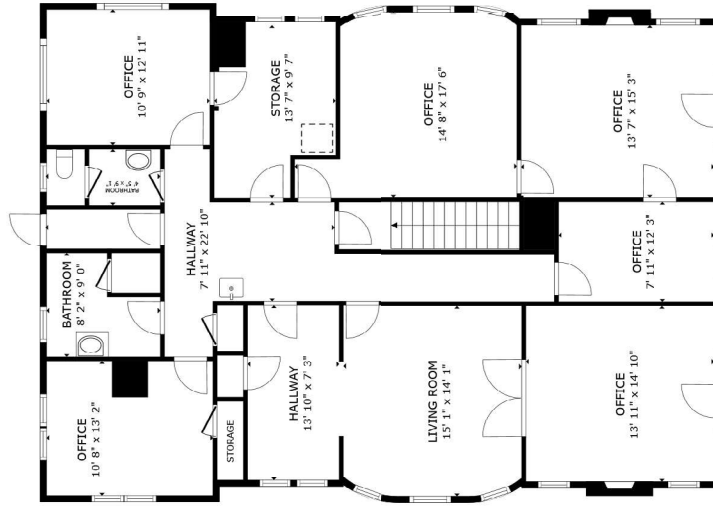


189 S. CONVERSE STREET
SPARTANBURG, SC 29306

All information deemed reliable, but not guaranteed.

GREG NORRIS
864.494.7061
GNORRIS@KDSCAINE.COM

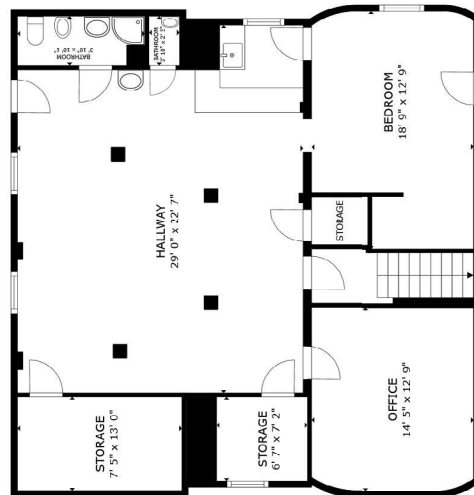
FLOOR PLANS



FLOOR 3



FLOOR 2



FLOOR 1



GROSS INTERNAL AREA
 FLOOR 1 1,332 sq.ft. FLOOR 2 1,991 sq.ft. FLOOR 3 1,956 sq.ft.
 TOTAL : 5,280 sq.ft.
 SIZES AND DIMENSIONS ARE APPROXIMATE, ACTUAL MAY VARY.

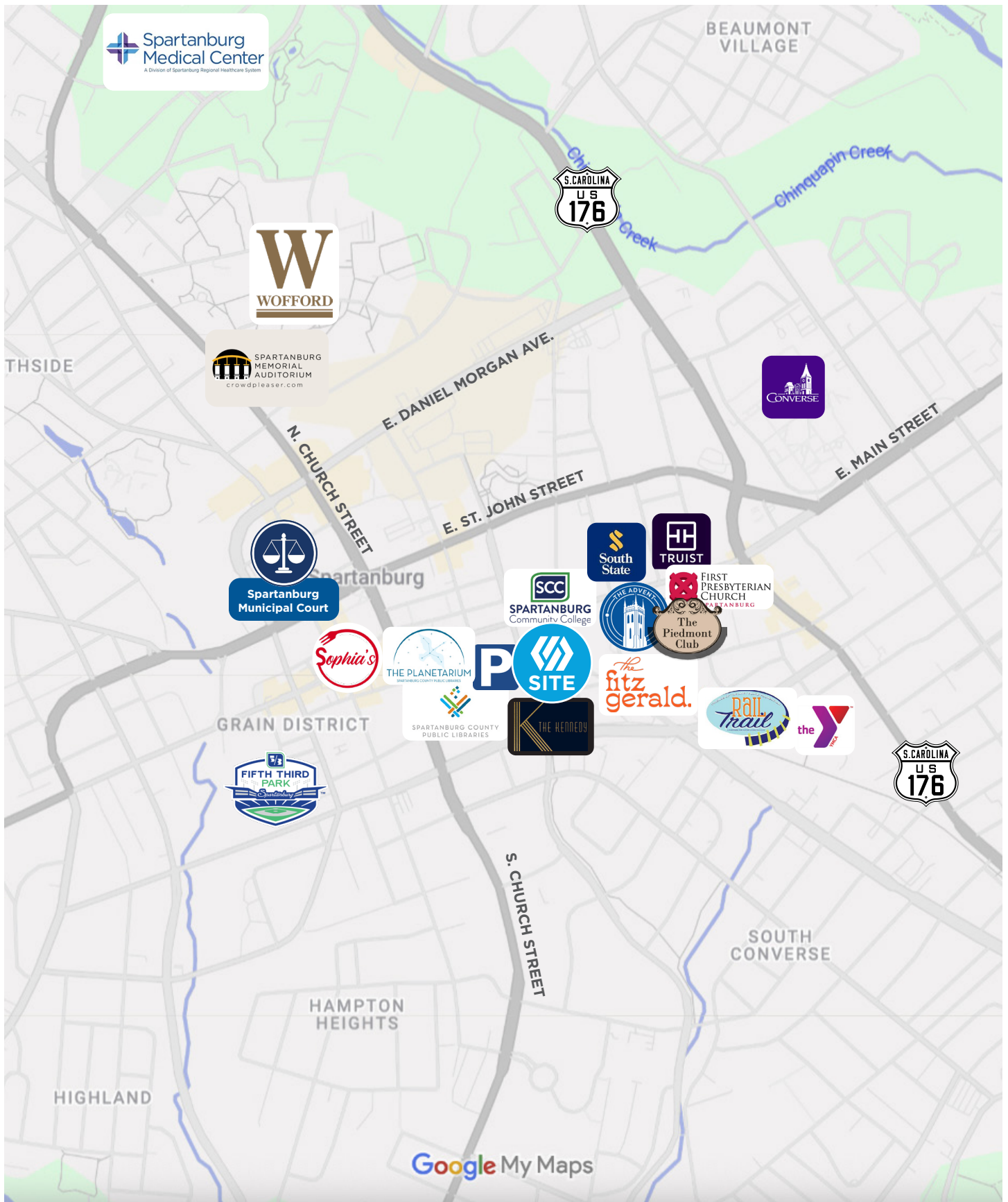


189 S. CONVERSE STREET
 SPARTANBURG, SC 29306

All information deemed reliable, but not guaranteed.

GREG NORRIS
 864.494.7061
 GNORRIS@KDSCAINE.COM

LOCATION



189 S. CONVERSE STREET
SPARTANBURG, SC 29306

All information deemed reliable, but not guaranteed.

GREG NORRIS
864.494.7061
GNORRIS@KDSCAINE.COM



WHY SPARTANBURG?

AN IDEAL LOCATION

Spartanburg County, the 5th-largest in South Carolina, is home to nearly 328,000 residents across 13 distinct municipalities.

There's truly something for everyone here. A bustling downtown filled with new shops, restaurants, and public art at every turn. Career opportunities abound, from international corporations to thriving small businesses, alongside civic and professional organizations. Outdoor enthusiasts will love the miles of trails, blueways, and exceptional recreation options. Spartanburg also takes a community-first approach to education and public health.

Families, young professionals, retirees, and entrepreneurs alike find their place in Spartanburg, growing and thriving in this dynamic community.

A DECADE OF SUCCESS

Since 2021, Spartanburg County has attracted 80 economic development projects, totaling \$5.1 billion in capital investment and creating 5,787 new jobs.

Spartanburg has consistently led South Carolina in economic investment and job creation for years, earning recognition as the U.S. Small Metro with the Most Economic Growth, and named to Site Selection Magazine's "Best to Invest Rankings" three times.



LOCATION, LOCATION, LOCATION

1.6 Million People

10 Upstate SC Counties

More Than 575

International Companies

#3 GDP Worldwide

At \$6.0T, the Southeast United State GDP Ranks #3 in the World.¹

160 New Locations

More than 160 companies have announced new locations in the Upstate over the last 5 years.



A CRITICAL MANUFACTURING HUB



SOUTH CAROLINA IS OPEN FOR BUSINESS

#1

State for Manufacturing in 2022
Site Selection Group

#2

State for Doing Business
Area Development

#1

Fastest Growing State
in the U.S.



REAL RELATIONSHIPS, NOT JUST REAL ESTATE

VERDAE OFFICE

340 Rocky Slope Road
Suite 302
Greenville, SC 29607

DOWNTOWN OFFICE

117 Williams Street
Greenville, SC 29601

GREG NORRIS
864.494.7061
GNORRIS@KDSCAINE.COM

Information contained herein has been obtained from sources deemed reliable, but we cannot guarantee it.
All property information is subject to change or withdrawal without notice.