

FOR LEASE: 2145 W PARK BLVD, PLANO, TX 75075

**FLORIST**

**PAWS & CLAWS  
ANIMAL HOSPITAL**



**GeoDwell**  
COMMERCIAL REAL ESTATE SERVICES

**FOR LEASE**

KELLER WILLIAMS REALTY  
2106 E. ST HWY 114 SOUTHLAKE, TEXAS 76092

VISIT [GeoDwellCommercial.com](http://GeoDwellCommercial.com)



**2nd Generation Medical Office**



**Michelle Rawls**  
(817) 715-5222  
[michelle@geoDWELL.com](mailto:michelle@geoDWELL.com)

Contact:



**Kevin Alexander**  
(817) 899-5493  
[kevin@geoDWELL.com](mailto:kevin@geoDWELL.com)

GeoDWELL COMMERCIAL REAL ESTATE GROUP



2106 E State Highway 114, Suite 2240, Southlake, TX 76092



(682) 235-4GEO



[www.geoDWELL.com](http://www.geoDWELL.com)

NOTICE & DISCLAIMER: The enclosed information is from sources believed to be reliable, but GeoDwell and Keller Williams Realty have not verified the accuracy of the information. GeoDwell and Keller Williams Realty make no guarantee, warranty or representation as to the information, and assumes no responsibility for any error, omission or inaccuracy. The information is subject to the possibility of errors, omissions, changes of condition, including price or rental, or withdrawal without notice. Any projections, assumptions or estimates are for illustrative purposes only. Recipients should conduct their own investigation.

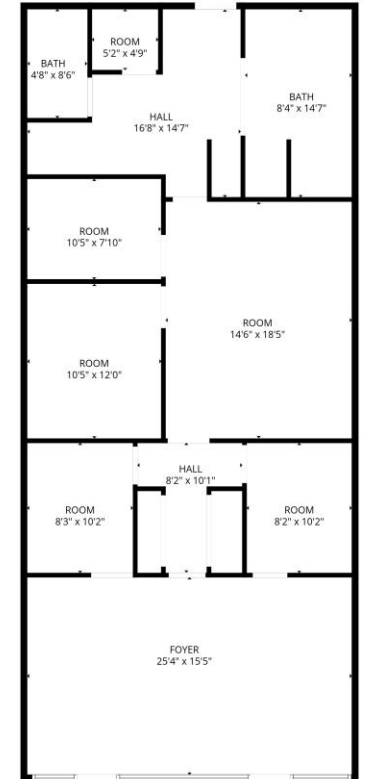
# Property Highlights:

- 1,596 SF
- 2<sup>nd</sup> Generation Medical Office- Previously a Vet Clinic
- 2 Offices, 2 Exam Rooms, 2 Large Open Rooms, Reception Area, Restroom
- Zoned- Retail
- \$17 psf + NNN
- Ample Parking



## Medical Office/Office/Retail For Lease

2145 W Park Blvd, Plano, TX 75075



Total GLA: 1596 sq. ft | Total: 1596 sq. ft  
1st floor: 1596 sq. ft

FLOOR PLAN CREATED BY CURICASA APP. MEASUREMENTS DEEMED HIGHLY RELIABLE BUT NOT GUARANTEED.

### Floor Plan

**Michelle Rawls**  
Director  
817.715.5222  
[michelle@geoDWELL.com](mailto:michelle@geoDWELL.com)

**Kevin Alexander**  
Associate  
817.899.5493  
[kevin@geoDWELL.com](mailto:kevin@geoDWELL.com)



GeoDwell COMMERCIAL REAL ESTATE GROUP

2106 E State Highway 114, Suite 2240, Southlake, TX 76092

(682) 235-4GEO

[www.geoDWELL.com](http://www.geoDWELL.com)

NOTICE & DISCLAIMER: The enclosed information is from sources believed to be reliable, but GeoDwell and Keller Williams Realty have not verified the accuracy of the information. GeoDwell and Keller Williams Realty make no guarantee, warranty or representation as to the information, and assumes no responsibility for any error, omission or inaccuracy. The information is subject to the possibility of errors, omissions, changes of condition, including price or rental, or withdrawal without notice. Any projections, assumptions or estimates are for illustrative purposes only. Recipients should conduct their own investigation.

# Medical Office/Office/Retail For Lease

2145 W Park Blvd, Plano, TX 75075



**Michelle Rawls**  
Director  
817.715.5222  
[michelle@geoDWELL.com](mailto:michelle@geoDWELL.com)

**Kevin Alexander**  
Associate  
817.899.5493  
[kevin@geoDWELL.com](mailto:kevin@geoDWELL.com)



GeoDWELL COMMERCIAL REAL ESTATE GROUP

//

2106 E State Highway 114, Suite 2240, Southlake, TX 76092

//

(682) 235-4GEO

//

[www.geoDWELL.com](http://www.geoDWELL.com)

NOTICE & DISCLAIMER: The enclosed information is from sources believed to be reliable, but GeoDwell and Keller Williams Realty have not verified the accuracy of the information. GeoDwell and Keller Williams Realty make no guarantee, warranty or representation as to the information, and assumes no responsibility for any error, omission or inaccuracy. The information is subject to the possibility of errors, omissions, changes of condition, including price or rental, or withdrawal without notice. Any projections, assumptions or estimates are for illustrative purposes only. Recipients should conduct their own investigation.

# Medical Office/Office/Retail For Lease

2145 W Park Blvd, Plano, TX 75075



**Michelle Rawls**  
Director  
817.715.5222  
[michelle@geoDWELL.com](mailto:michelle@geoDWELL.com)

**Kevin Alexander**  
Associate  
817.899.5493  
[kevin@geoDWELL.com](mailto:kevin@geoDWELL.com)





# GeoDwell<sup>SM</sup>

REAL ESTATE SERVICES

CONTACT: (682) 235-4GEO  
[michelle@geoDWELL.com](mailto:michelle@geoDWELL.com)  
[www.geoDWELL.com](http://www.geoDWELL.com)