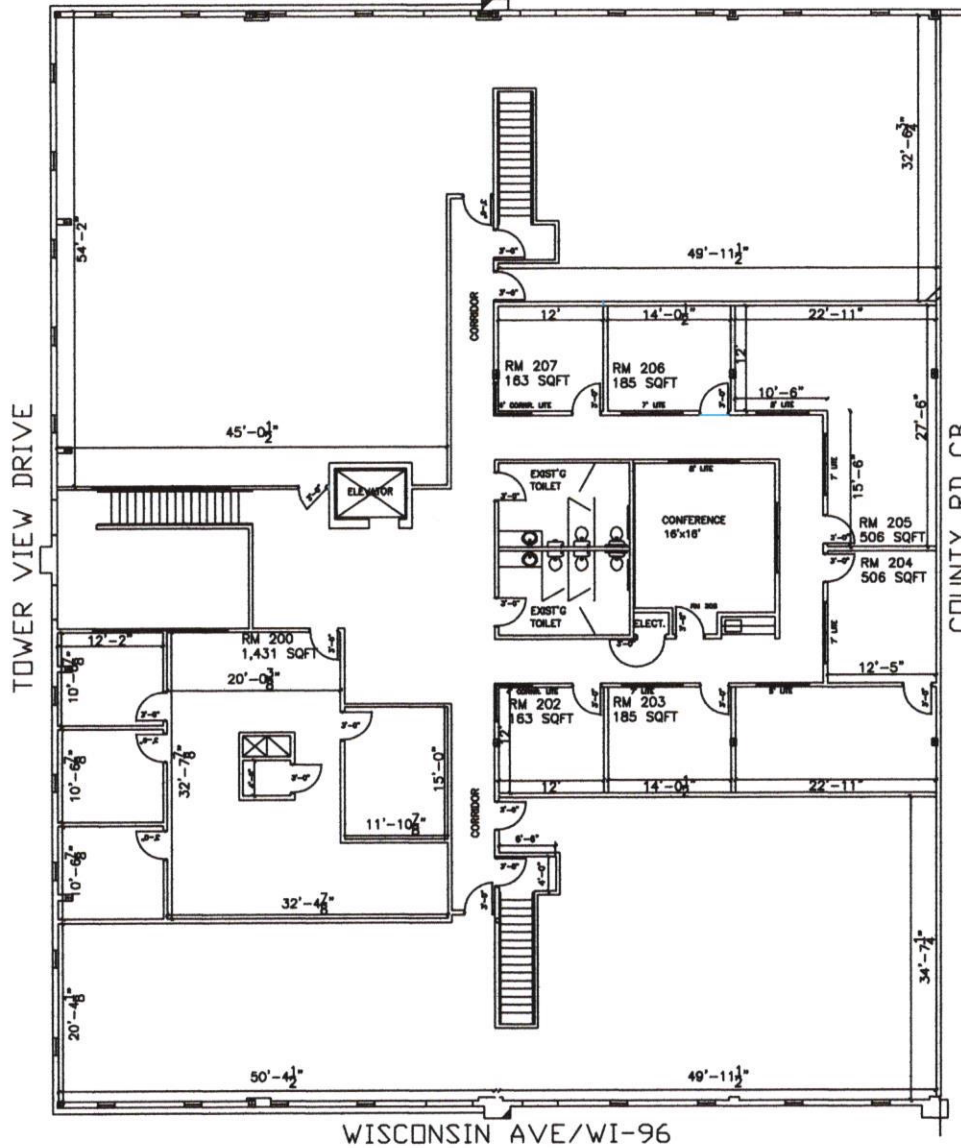


N922 TOWER VIEW DRIVE GREENVILLE WI - 2ND FLOOR

QUALITY DRIVE



## GENERAL BUILDING INFO

- WI-96 Exposure, Across from Outagamie Airport
- Easy access to WI-96, WI-15 and County Road CB
- Ample parking
- 3 Main entrances
- Security System
- Security Cameras (Exterior and Exec Office Common Areas)
- Two Story, 10ft Ceil
- Elevator
- Steel Frame
- Fire Walls Btwn Units
- 3PH
- Glacier Acoustical Ceiling Tile
- Parabolic Lighting
- Solid Core Doors
- Interior Mailboxes
- Signage Capabilities
- Each interior steel stud wall has 1/2" sheet rock and 1/2" soundboard on both sides of the steel stud wall.
- Sound deadening insulation is installed in the center of the interior steel stud walls.
- Each Floor: Furnished Common Conference Rm
- Each Floor: Common Break Area w/ Micro, Refrig
- Each Floor: Common Women's Bath Rm w/ 3 Stalls, 1 Sink
- Each Floor: Drinking Fountain
- Each Floor: Common Men's Bath Rm w/ 2 Stalls, 1 Urinal, 1 Sink

VISIT OUR WEBSITE AT

[WWW.LEASETALISMAN.COM](http://WWW.LEASETALISMAN.COM)

To see all our locations in Green Bay, Kaukauna, and Appleton

OR CALL 1-800-575-1975

for more details or to setup a showing.

**TALISMAN DEVELOPMENT**

Scaled to fit

1-800-575-1975 ~ (920)766-6561 ~ Fax (920)766-6568 ~ 3051 Progress Way #100 Kaukauna, WI 54130 ~ lease@leasetalisman.com