

Land Development Opportunity

651.18 Acres - Approximately 4.8 Miles to I-10

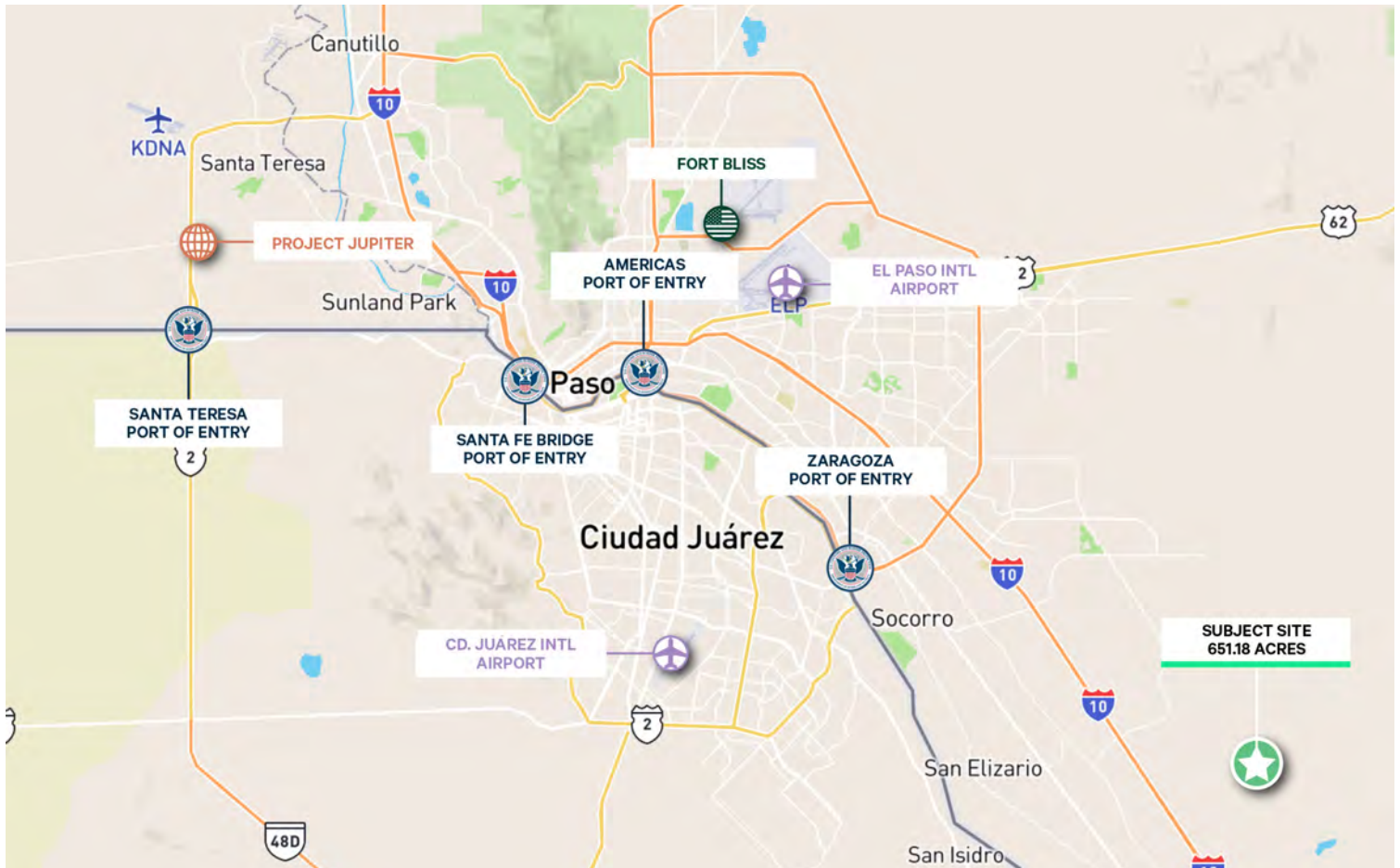
Clint, TX 79928
www.cbre.com/elpaso



Land Summary

This 651.18-acre undeveloped land site in Clint, Texas, presents substantial development opportunities within the growing East El Paso submarket of Clint, Texas. Located approximately 10 minutes from I-10, the property's proximity to the interstate significantly boosts its appeal for a variety of development projects.

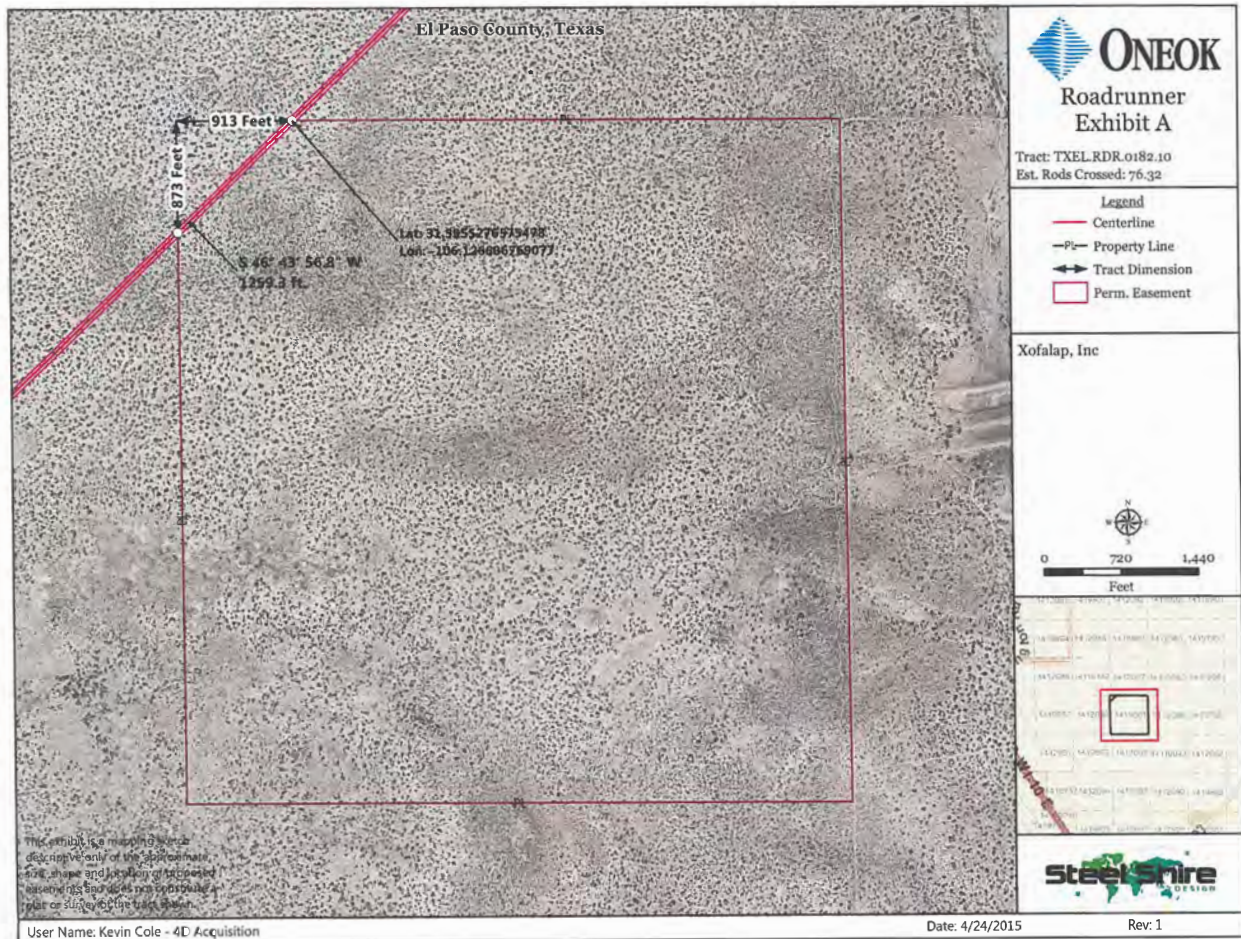
651.18 Acres



Key Travel Distances

- 4.8 Miles from I-10
- ±18 Miles from the Zaragoza Port of Entry
- ±24 Miles from the El Paso Intl. Airport
- ±26 Miles from the Bridge of the Americas
- ±28 Miles from the Cd Juárez Intl. Airport
- ±30 Miles from Ft. Bliss
- ±30 Miles from the Santa Fe Bridge
- ±40 Miles from the Meta Data Center
- ±49 Miles from Project Jupiter
- ±52 Miles from the Santa Teresa Port of Entry

Easement - 651.18 Acres



Contact Us

Tina Wolfe
First Vice President
T: +1 915 313 8826
C: +1 915 471 2547
tina.wolfe@cbre.com

Jonathan Plundo
Debt and Structured Finance
T: +1 915 313 8803
C: +1 915 345 5574
jonathan.plundo@cbre.com

© 2026 CBRE, Inc. All rights reserved. This information has been obtained from sources believed reliable, but has not been verified for accuracy or completeness. You should conduct a careful, independent investigation of the property and verify all information. Any reliance on this information is solely at your own risk. CBRE and the CBRE logo are service marks of CBRE, Inc. All other marks displayed on this document are the property of their respective owners, and the use of such logos does not imply any affiliation with or endorsement of CBRE. Photos herein are the property of their respective owners. Use of these images without the express written consent of the owner is prohibited.

