

Small Move-In Ready Spaces Available!



LISLE ILLINOIS



Building Summary & Amenities

Newly Renovated Lobby



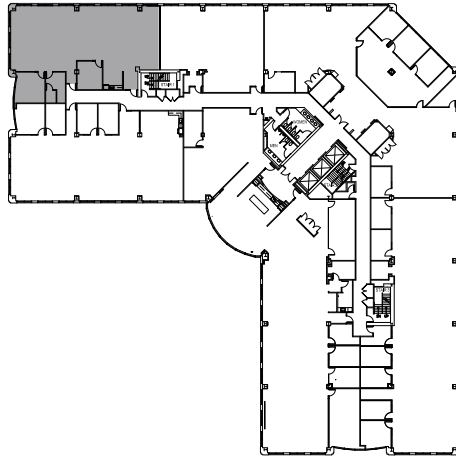
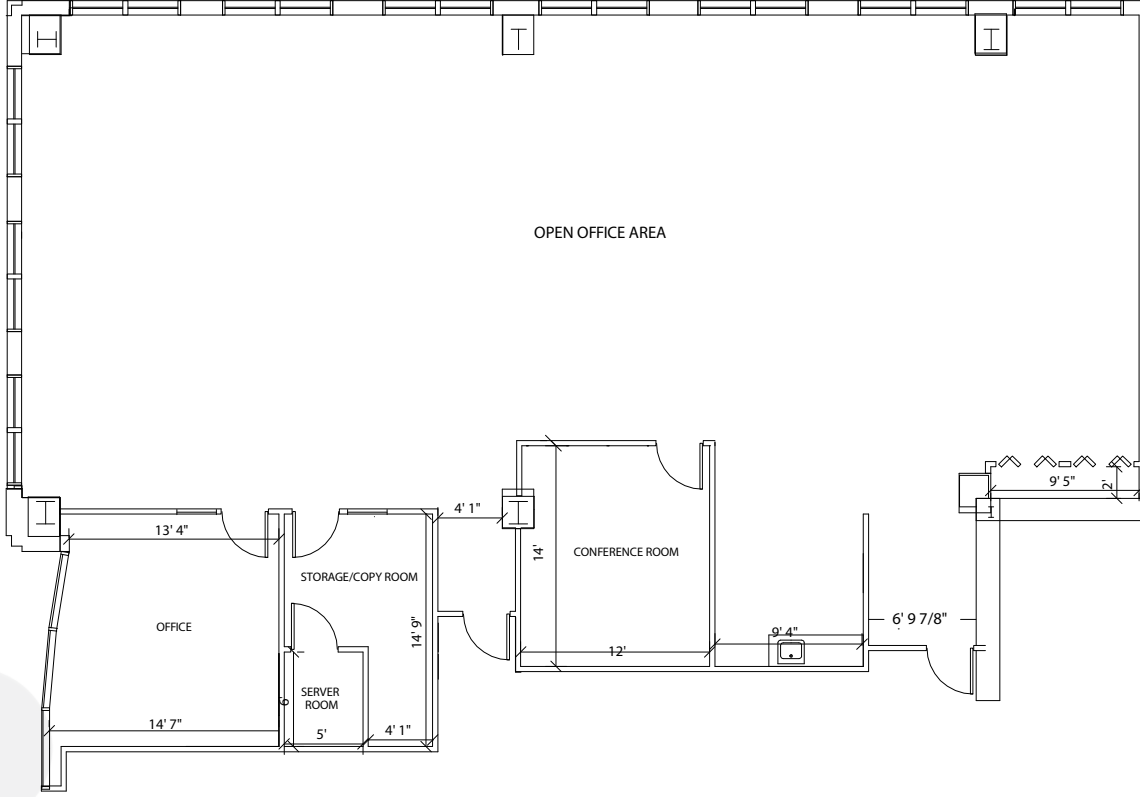
2200 Cabot Drive is a 5-story, 131,668 square foot boutique office building with 2-story glass atrium and park-like grounds. The building is clad in a granite and concrete facade accentuated by a 4-story glass curtain. The property has abundant parking, which includes 29 underground heated executive spaces.

Located in the 64-acre Corporate Lakes office development in Lisle, 2200 Cabot Drive offers convenient access to the I-88 East-West Tollway and convenient access to I-355 North-South Tollway. Just minutes away from great off-site amenities.



Newly Renovated Tenant Lounge

- Newly Renovated Lobby, Tenant Lounge, Full Service Deli, Corridors & Restrooms
- Conference/Training Facility
- Heated, Executive Parking Available
- On-Site Ownership and Property Management

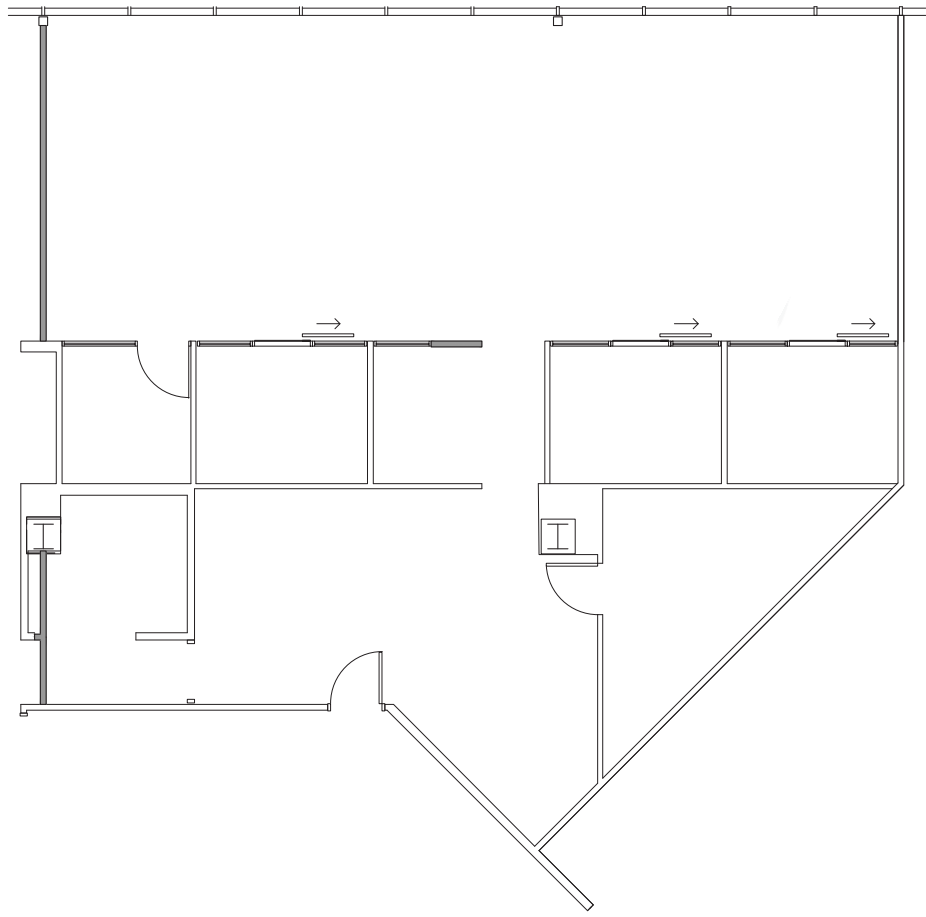
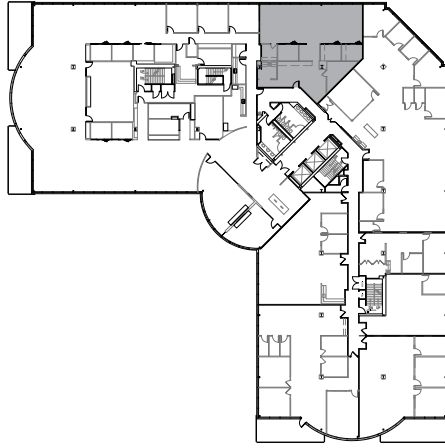


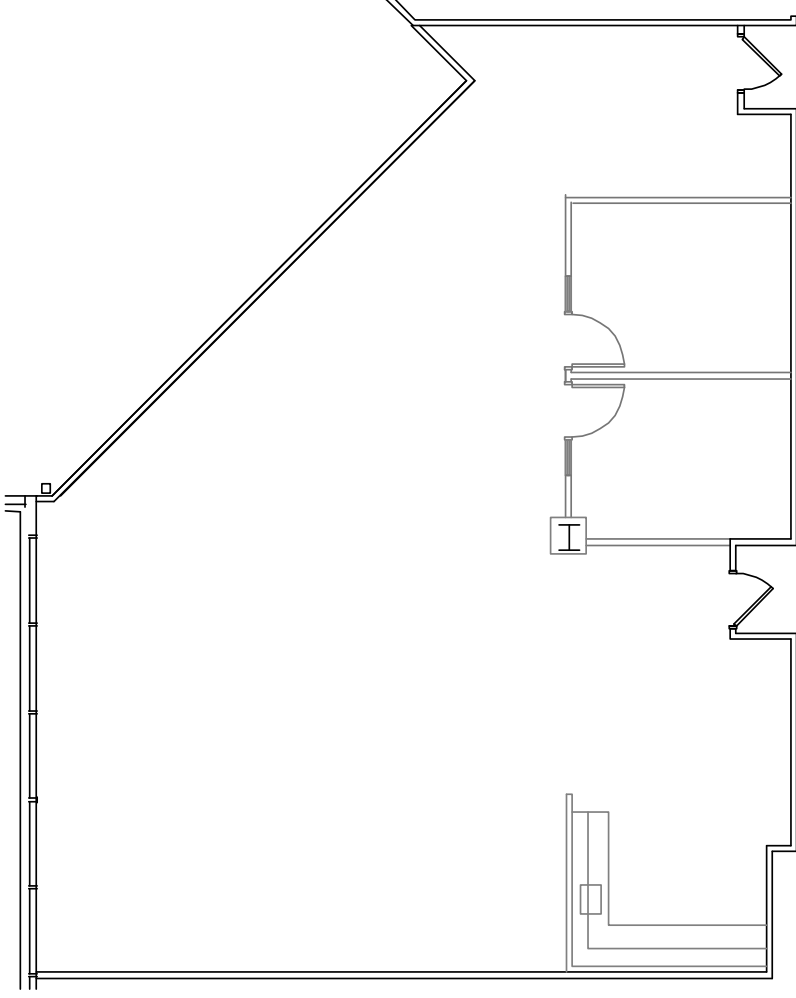
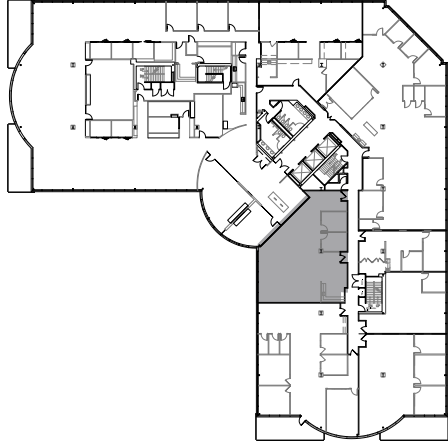
3rd Floor - Suite 330

3,570 RSF



4th Floor - Suite 405
2,434 RSF





4th Floor - Suite 430

2,423 RSF



CONTACT

Patrick Kiefer

630 693 0670

pkiefer@hiffman.com

AN INVESTMENT OF



RE Development
Solutions

NAI Hiffman
Commercial Real Estate Services, Worldwide

One Oakbrook Terrace Suite 400
Oakbrook Terrace, Illinois 60181
hiffman.com