

FOR SALE OR LEASE
1107 S. SANTA FE AVE.
Pueblo, CO



Colorado Springs Commercial



10,000 SF AVAILABLE

PROPERTY HIGHLIGHTS

Available for Sale or for Lease, this partially occupied building has 10,000 SF of functional warehouse available for immediate occupancy. Also available is approximately 2,500 SF of office space. The property has easy access to I-25 and is very functional with drive-in, overhead doors, ample power, and good outdoor storage available.



Contact

AARON HORN
Sr. Managing Director
M: 719-330-4162
ahorn@coscommercial.com

Colorado Springs Commercial
2 N. Cascade Ave., Ste. 720
Colorado Springs, CO 80903
coscommercial.com

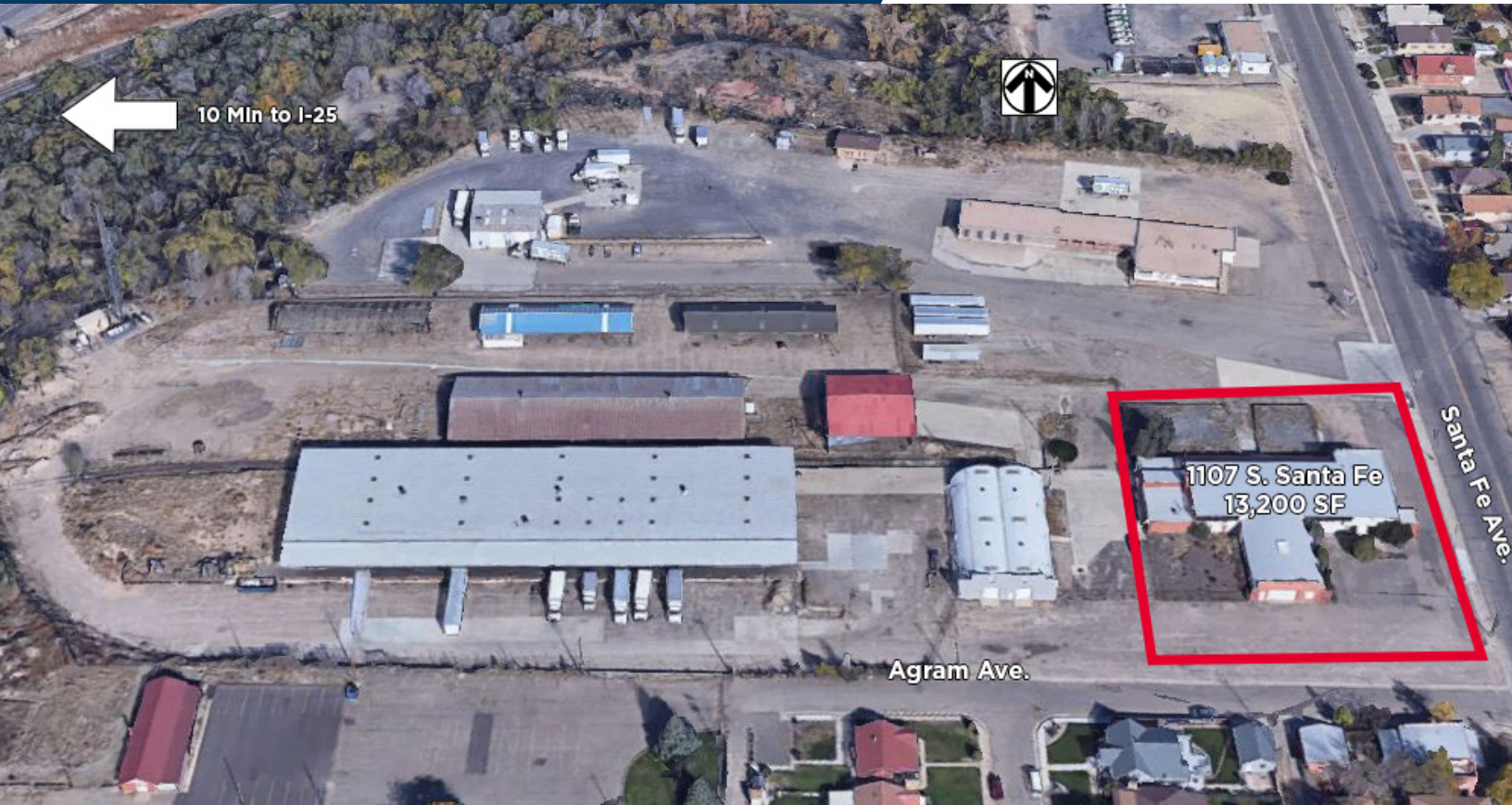
©2020 Cushman & Wakefield. All rights reserved. The information contained in this communication is strictly confidential. This information has been obtained from sources believed to be reliable but has not been verified. No warranty or representation, express or implied, is made as to the condition of the property (or properties) referenced herein or as to the accuracy or completeness of the information contained herein, and same is submitted subject to errors, omissions, change of price, rental or other conditions, withdrawal without notice, and to any special listing conditions imposed by the property owner(s). Any projections, opinions or estimates are subject to uncertainty and do not signify current or future property performance.

FOR SALE OR LEASE
1107 S. SANTA FE AVE.
Pueblo, CO



**CUSHMAN &
WAKEFIELD**

**Colorado Springs
Commercial**



PROPERTY DETAILS

- RSF: 13,200
- Available: 8,000 - 10,000 SF
- Sale Price: Contact Broker
- Lease Rate: \$6.00/SF NNN
- Estimated NNN: \$1.05
- Zoning: Light Industrial
- Loading: Drive-In, overhead doors
- YOC: 1955
- Clear Height: 14'
- Electrical: 200 AMPs

Contact:

AARON HORN
Sr. Managing Director
M: 719-330-4162
ahorn@coscommercial.com



Colorado Springs Commercial
2 N. Cascade Ave., Ste. 720
Colorado Springs, CO 80903
coscommercial.com