

MARITIME BUILDING

SUBLEASE

911 WESTERN AVENUE
SEATTLE, WA 98104

AVAILABLE
IMMEDIATELY

67,518 SF

MARITIME
BLDG
906

MARITIME
BLDG
906

BIG FISH

BIG FISH

Fully Renovated Historic Building

- Class A built in 1909-1910
- Full floor or multiple floor opportunity available
- Term through November 2031
- \$24.00 FSG per RSF
- One of the last heavy timber post & beam waterfront buildings
- Waterfront views of Elliott Bay and the Olympic mountains
- Exposed old growth timber columns
- Furniture included
- Large rooftop deck
- Steps from the ferry dock
- Ample neighborhood parking



2019 Office Interior of the Year Award Winner (NAIOP)





HomeStreet Bank



Dropbox



I-5 FREEWAY

Milliman

CRAY

PIKE ST



PERKINS COIE
COUNSEL TO GREAT COMPANIES

DocuSign

Expeditors



YESTER WAY

slalom

SECOND AVE

Zillow

ORACLE

avanaDe

LAIRD NORTON
REAL ESTATE

indeed

OTT AVP

ALASKAN WAY

MARITIME
BUILDING



SALTCHUK

CORPORATE NEIGHBORS

SEATTLE'S WATERFRONT TRANSFORMATION

2020

- Columbia Street two-way transit corridor opens
- Pier 62 opens

2021

- New traffic and transit lanes on Alaskan Way between S King and Union Streets
- Union Street pedestrian bridge construction
- Marion Street Bridge construction

2022

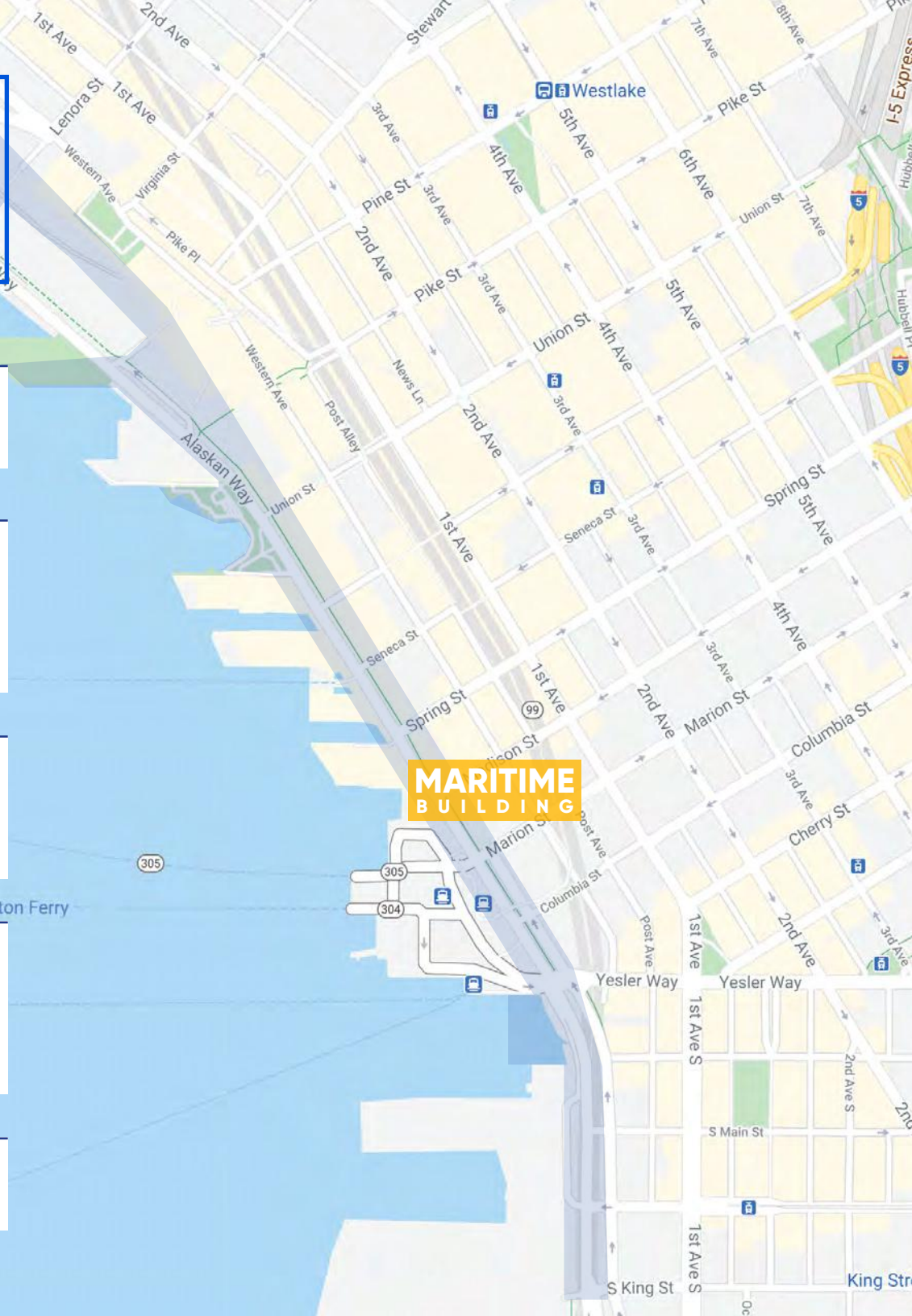
- Overlook Walk construction
- Pike & Pine Renaissance construction
- Pioneer Square East West Improvements construction

2023

- Complete Union Street pedestrian bridge
- Complete Pike & Pine Renaissance
- Complete Pioneer Square East West Pedestrian improvements

2024

- Complete Overlook Walk & completion of the Waterfront Seattle Program construction



WALKABLE AMENITIES

94

Walk Score

100

Transit Score

83

Biker Score

COMMUTER'S PARADISE

CASUAL EATS & DRINKS

- Alibi Room
- Ancient Grounds
- Blarney Stone
- Boka
- Bottega Italiana
- Caffè Migliore
- Capital Grille
- Crab Pot
- Delicatus @ the Hall
- Diller Room
- Elliott's Oyster House
- Elysian
- Fonte Cafe
- Goldfinch
- Hard Rock Cafe
- Heartwood Provisions
- Japonessa
- Joybento
- Lecosho
- Loulay
- Ludi's
- Matt's in the Market
- Maximillien
- Metropolitan Grill
- Nijo Sushi Bar & Grill
- Noi Thai Cuisine
- Okinawa Teriyaki
- Palomino
- Pike Pub and Brewery
- Place Pigalle
- Purple
- RN74
- Shuckers
- Specialty's Cafe & Bakery
- Starbucks
- Steelhead Diner
- Sullivan's Steakhouse
- Taste
- Trace
- Triple Door
- Wild Ginger
- Yard House
- Zaina

HOTELS

- Alexis Hotel
- Crown Plaza Seattle
- Fairmont Olympic
- Four Season
- Hilton Seattle
- Hotel 1000
- Hotel Monaco
- Inn at the Market
- Motif
- Renaissance Seattle
- Sheraton Seattle
- W Hotel

BANKS

- Bank of America
- Bank of the West
- BECU
- Chase Bank
- Key Bank
- Wells Fargo Bank

MARKETS

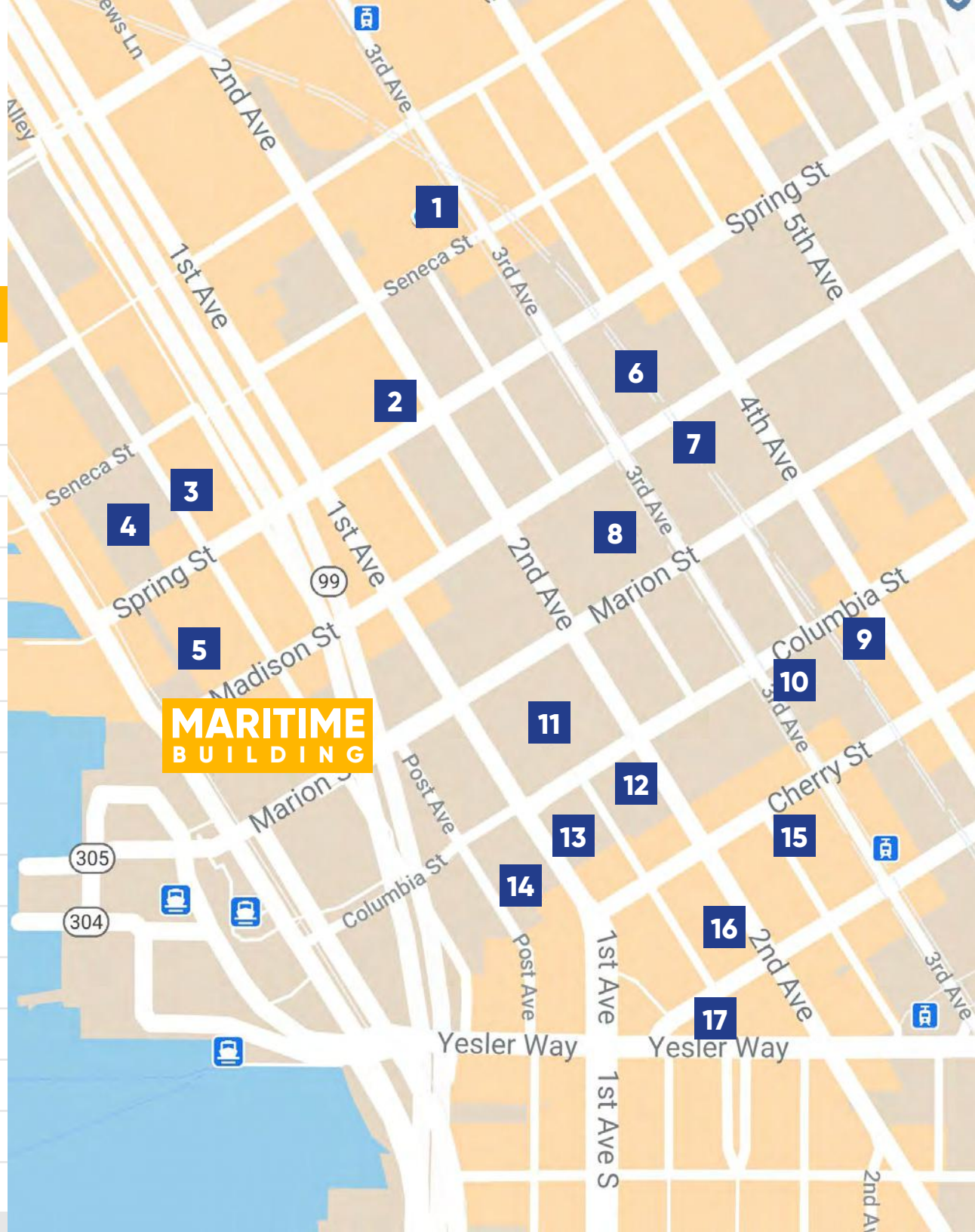
- Bartell Drugs
- CVS Pharmacy
- MarketSpice
- Kress IGA Supermarket
- Paris-Madrid Grocery
- Seattle Antiques Market
- Target
- Vons
- Wallgreens

THEATERS & ATTRACTIONS

- 5th Avenue Theatre
- Benaroya Hall
- Great Wheel
- Pike Place Market
- Seattle Aquarium
- Seattle Art Museum
- Seattle Public Library
- Waterfront Park
- Wings Over Washington

ADDITIONAL PARKING OPTIONS

Location	Number of Stalls Available	Monthly Cost Per Stall
1 1201 Third Garage	100+	\$365
2 1101 Garage	10	\$366
3 Watermark Parking Garage	TBD	\$341
4 Watermark 2 Lot	TBD	\$374
5 Waterfront Place Garage	73	\$300
6 Safe Plaza Garage	70+	\$370
7 Fourth & Madison Garage	200+	\$360
8 999 Third Garage	50+	\$360
9 4th & Columbia Garage	15	\$313
10 Pacific Building Garage	100	\$335
11 Norton Building Garage	24	\$350
12 Millennium Tower Garage	TBD	\$345
13 714 1st Ave Garage	48	\$280
14 1st & Columbia Garage	100+	\$288
15 Cherry Street Garage	86	\$363
16 Butler Garage	TBD	\$351
17 515 2nd Ave Garage	51	\$277



Creative • Open • Efficient







8TH FLOOR Amenity

- Kitchen
- Workout facility
- Yoga studio
- Shower/locker rooms
- Game room
- Large rooftop deck



8TH FLOOR AMENITY
VIRTUAL TOUR



LEASED



**7TH FLOOR
25,786 SF**

**6TH FLOOR
25,991 SF**



LEASED

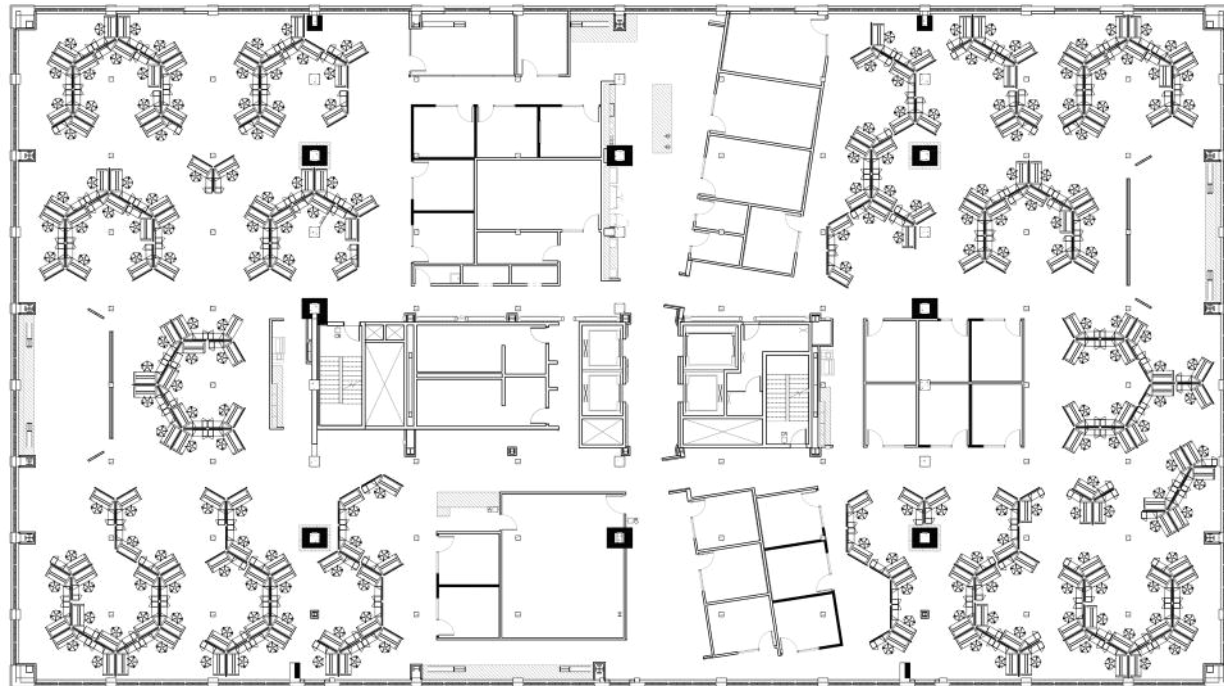
LEASED



**5TH FLOOR
33,754 SF**



**4TH FLOOR
33,759 SF**



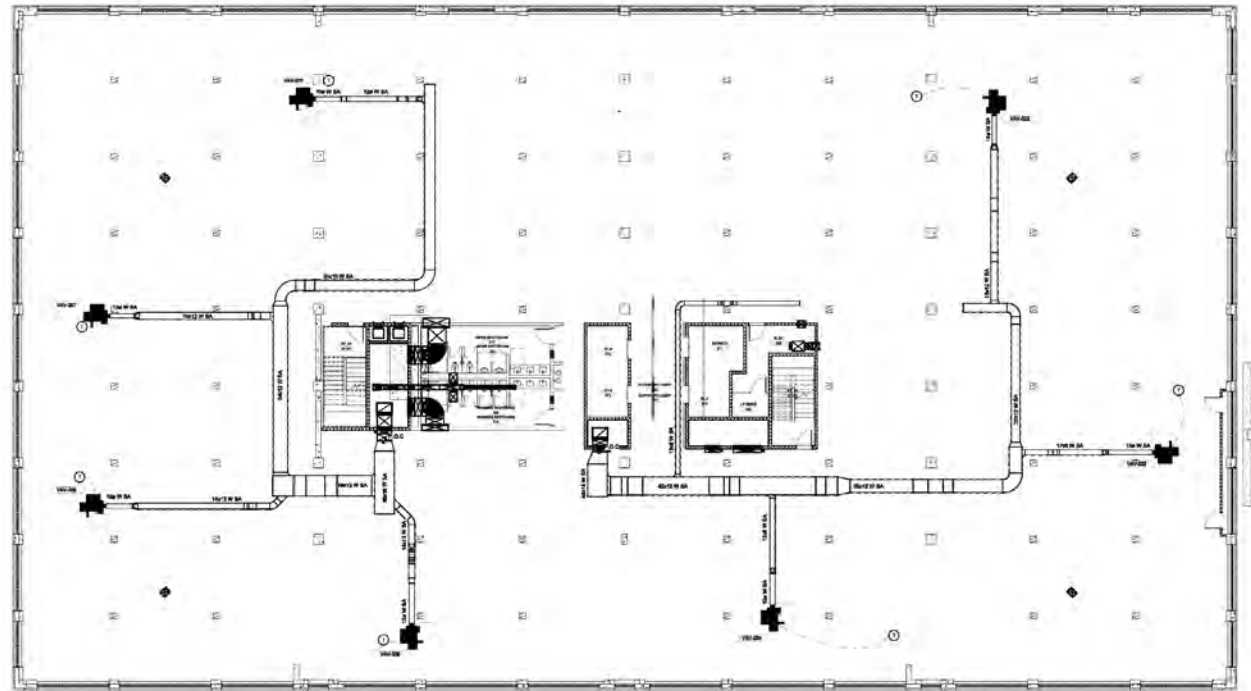
**4TH FLOOR
VIRTUAL TOUR**

LEASED



**3RD FLOOR
33,757 SF**

**2ND FLOOR
33,759 SF**



LISTING TEAM

FLINN
FERGUSON
cresa

MATT HERMSEN

206.898.2655

Matt@flinnferguson.com

JADE RICE

425.283.2331

Jade@flinnferguson.com

